



PARTS LIST FOR
MH-0100-CM1N

This Parts Listing has been compiled for your benefit. You can be assured your Mi-T-M Portable Heater was constructed and designed with quality and performance in mind. Each component has been rigorously tested to insure the highest level of acceptance.

The contents of this Parts Listing are based on the latest product information available at the time of publication. Mi-T-M reserves the right to make changes in price, color, materials, equipment, specifications or models at any time without notice.

WARNING

THIS IS A PROFESSIONAL PORTABLE HEATER. CAUTION SHOULD BE OBSERVED WHEN USING OR REPAIRING THIS UNIT! READ AND FOLLOW THE SAFETY WARNINGS LISTED BELOW BEFORE ATTEMPTING ANY REPAIRS ON THIS PORTABLE HEATER!

SAFETY WARNINGS

- 1. NEVER alter or modify the equipment. Use only genuine Mi-T-M parts for repair of your portable heater. Failure to do so can cause hazardous operating conditions and will VOID warranty.
- 2. Be thoroughly familiar with controls.
- 3. Before servicing the unit, turn unit off, and allow the unit to cool down. Do not make repairs while the unit is running. Service in a clean, dry, flat area. Block the wheels to prevent the unit from moving. Be especially careful to properly dispose of any flammable materials.

Table of Contents

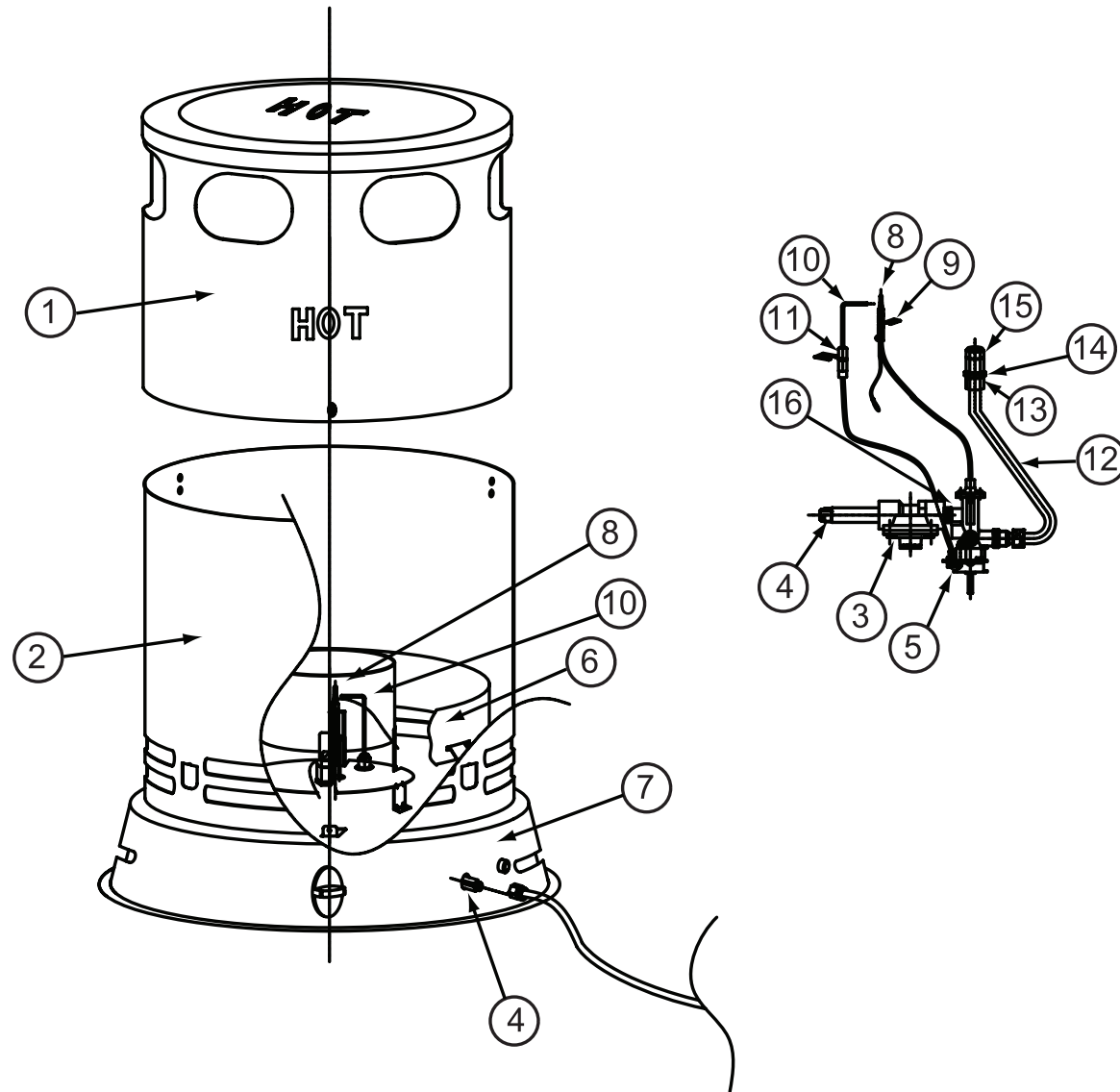
SPECIFICATIONS.....3

FRAME ASSEMBLY4

SPECIFICATIONS

MODEL NUMBER	MH-0100-CM1N
Output Rating (BTU/Hr):	50,000-100,000
Fuel Consumption (lbs per hr)	2.13 to 4.63
Supply Pressure (WC)	7-14
Manifold Pressure (PSI):	3" to 6.3"
Spark Gap	.195
Net Weight (Lbs):	14.3
Size (L x W x H)	15.7" x 15.7" x 26.4"

FRAME ASSEMBLY



MH-0100-CM1N 090110 RSW			
FRAME ASSEMBLY			
1	UPPER SHELL	C/F	1
2	LOWER SHELL	C/F	1
3	REGULATOR	68-6009	1
4	INLET CONNECTOR	68-6010	1
5	VALVE ASSEMBLY	68-6011	1
6	WIND SCREEN	68-6024	1
7	BASE	68-6025	1
8	THERMOCOUPLE	68-6027	1
9	THERMOCOUPLE BRACKET	68-6029	1
10	SPARK PLUG	68-6030	1
11	SPARK PLUG BRACKET	C/F	1
12	OUTLET TUBING ASSEMBLY	68-6012	1
13	NOZZLE NUT	68-6013	1
14	NOZZLE HOLDER	68-6014	1
15	NOZZLE	68-6015	1
16	MIDDLE CONNECTOR	68-6031	1

Manufactured by Mi-T-M
8650 Enterprise Drive, Peosta IA 52068
563-556-7484/ Fax 563-556-1235