



PARTS LIST FOR
MH-0092-0MIH

This Parts Listing has been compiled for your benefit. You can be assured your Mi-T-M Portable Heater was constructed and designed with quality and performance in mind. Each component has been rigorously tested to insure the highest level of acceptance.

The contents of this Parts Listing are based on the latest product information available at the time of publication. Mi-T-M reserves the right to make changes in price, color, materials, equipment, specifications or models at any time without notice.

WARNING

THIS IS A PROFESSIONAL PORTABLE HEATER. CAUTION SHOULD BE OBSERVED WHEN USING OR REPAIRING THIS UNIT! READ AND FOLLOW THE SAFETY WARNINGS LISTED BELOW BEFORE ATTEMPTING ANY REPAIRS ON THIS PORTABLE HEATER!

SAFETY WARNINGS

1. NEVER alter or modify the equipment. Use only genuine Mi-T-M parts for repair of your portable heater. Failure to do so can cause hazardous operating conditions and will VOID warranty.
2. Be thoroughly familiar with controls.
3. Before servicing the unit, turn unit off, and allow the unit to cool down. Do not make repairs while the unit is running. Service in a clean, dry, flat area. Block the wheels to prevent the unit from moving. Be especially careful to properly dispose of any flammable materials.

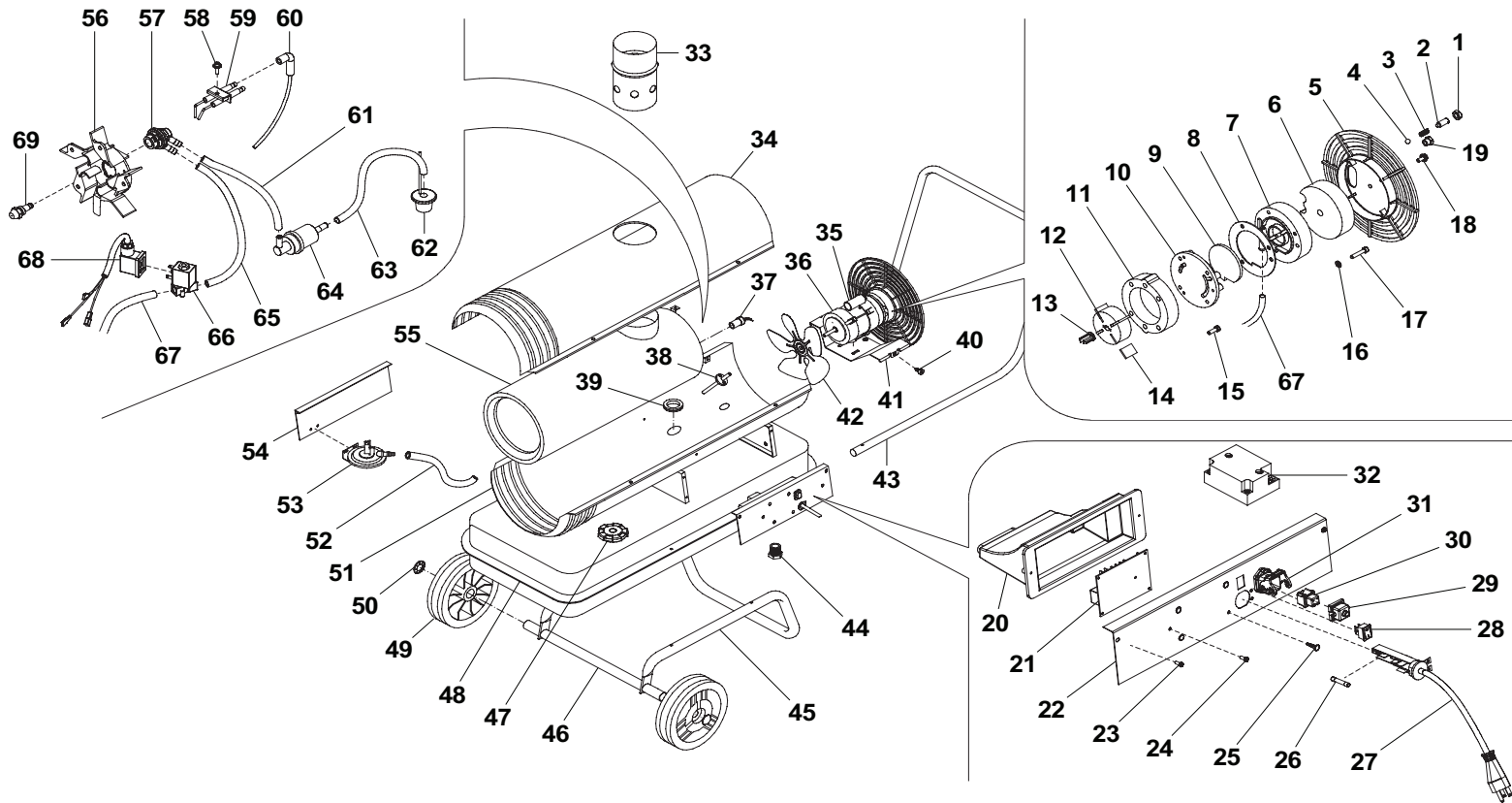
Table of Contents

SPECIFICATIONS.....3
FRAME ASSEMBLY4

SPECIFICATIONS

MODEL NUMBER	MH-0092-0MIH
Output Rating (BTU/Hr):	91,750
Tank Capacity (gal)	12.0
Fuel Consumption (gal. per Hr)	.66
Air Pressure (PSI):	4.8
Electric Requirements:	115V / 60HZ
Amperage (normal run)	4.0
Net Weight (Lbs):	88
Size (L x W x H)	37" x 22" x 25"

FRAME ASSEMBLY



MH-0092-0MIH 072210 RSW

FRAME ASSEMBLY							
ITEM NO.	ITEM DESCRIPTION	PART NO.	QTY.	ITEM NO.	ITEM DESCRIPTION	PART NO.	QTY.
1	NUT	C/F	1	36	MOTOR	68-4028	1
2	SCREW	C/F	1	37	FLAME SENSOR	68-4029	1
3	SPRING	C/F	1	38	MANOSTAT BRACKET	C/F	1
4	SPHERE	C/F	1	39	RUBBER RING	C/F	1
5	REAR GUARD	68-4009	1	40	SCREW	C/F	1
6	SUCTION FILTER	68-4010	1	41	MOTOR SUPPORT	C/F	1
7	FILTER PLATE	68-4011	1	42	FAN	68-4030	1
8	COMPRESSOR COVER GASKET	68-4012	1	43	HANDLE	68-4031	1
9	OUTLET FILTER	68-4013	1	44	DRAIN TANK CAP	68-4032	1
10	COMPRESSOR COVER	68-4014	1	45	FRAME	68-4033	1
11	STATOR RING	68-4015	1	46	AXLE	68-4034	1
12	ROTOR	68-4016	1	47	FUEL TANK CAP	68-4035	1
13	COUPLING	68-4017	1	48	FUEL TANK	68-4036	1
14	BLADE	68-4018	1	49	WHEEL	68-4037	1
15	SCREW	C/F	1	50	WHEEL RING	68-4038	1
16	WASHER	C/F	1	51	LOWER SHELL	68-4039	1
17	SCREW	C/F	1	52	MANOSTAT HOSE	68-4040	1
18	SCREW	C/F	1	53	MANOSTAT	68-4041	1
19	CAP	C/F	1	54	SIDE PANEL	68-4042	1
20	ELECTRICAL PANEL COVER	68-4019	1	55	COMBUSTION CHAMBER	68-4043	1
21	BOARD CONTROL UNIT	68-4020	1	56	BURNER HEAD	68-4044	1
22	LEFT SIDE PANEL	68-4021	1	57	NOZZLE HOLDER	68-4045	1
23	SCREW	C/F	1	58	SCREW	C/F	1
24	SCREW	C/F	1	59	IGNITION ELECTRODE	68-4046	1
25	SPACER	C/F	1	60	HT CABLE	68-4047	1
26	FUSE	68-4022	1	61	OIL HOSE	C/F	1
27	POWER CORD	68-4023	1	62	SUCTION GASKET	C/F	1
28	SWITCH	C/F	1	63	OIL HOSE	C/F	1
29	CAP	C/F	1	64	OIL SUCTION FILTER	68-4048	1
30	THERMOSTAT SOCKET	68-4127	1	65	AIR HOSE	C/F	1
31	THERMOSTAT SOCKET CASE	68-4075	1	66	SOLENOID VALVE	68-4049	1
32	TRANSFORMER	68-4024	1	67	AIR HOSE	C/F	1
33	FLUE COLLAR	68-4025	1	68	CONNECTOR & CABLE	68-4050	1
34	UPPER SHELL	68-4026	1	69	NOZZLE	68-4051	1
35	CAPACITOR	68-4027	1				

Manufactured by Mi-T-M
8650 Enterprise Drive, Peosta IA 52068
563-556-7484/ Fax 563-556-1235