



PARTS LIST FOR
BIO-15-OM10 /BIO-15-OM30
WATER TREATMENT SYSTEM
WITH OZONE
(AFTER SERIAL #30001104)

Congratulations on the purchase of your new Mi-T-M water treatment system! This parts listing has been compiled for your benefit. You can be assured your Mi-T-M water treatment system was constructed and designed with quality and performance in mind. Each component has been rigorously tested to insure the highest level of acceptance.

The contents of this parts listing are based on the latest product information available at the time of publication. Mi-T-M reserves the right to make changes in price, color, materials, equipment, specifications or models at any time without notice.

WARNING

THIS IS A PROFESSIONAL WATER TREATMENT SYSTEM. CAUTION SHOULD BE OBSERVED WHEN USING OR REPAIRING THIS UNIT! READ AND FOLLOW THE SAFETY WARNINGS LISTED BELOW BEFORE ATTEMPTING ANY REPAIRS ON THIS WATER TREATMENT SYSTEM!

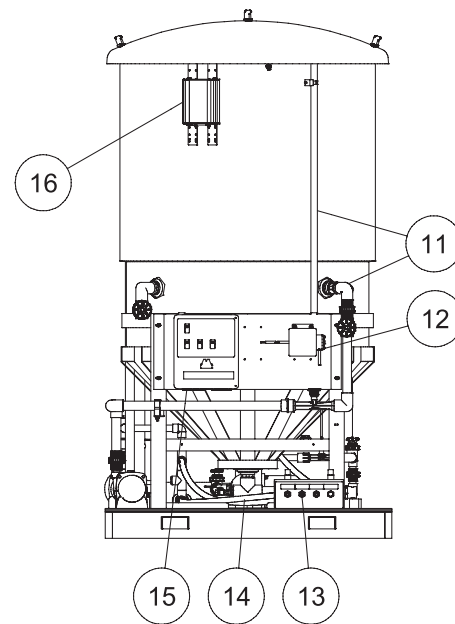
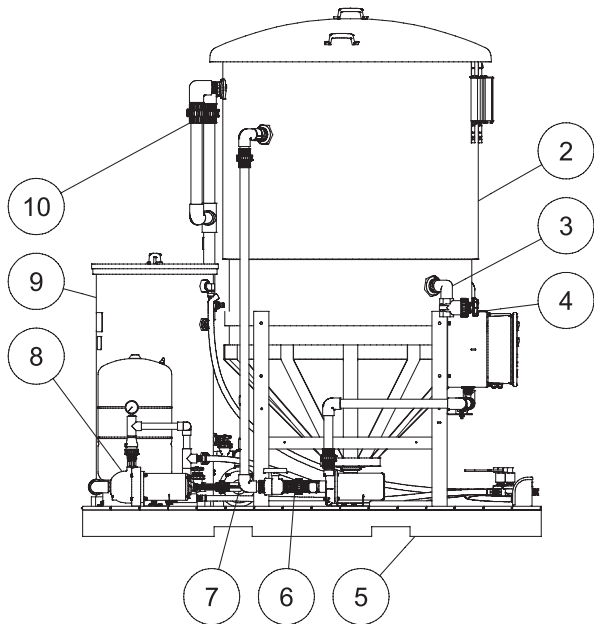
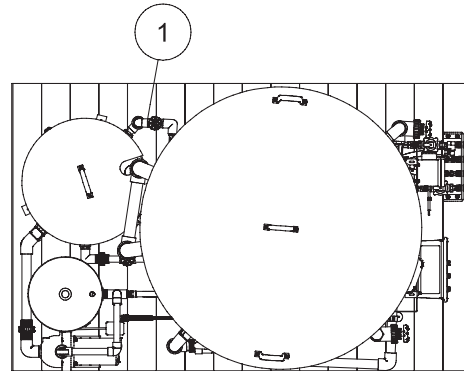
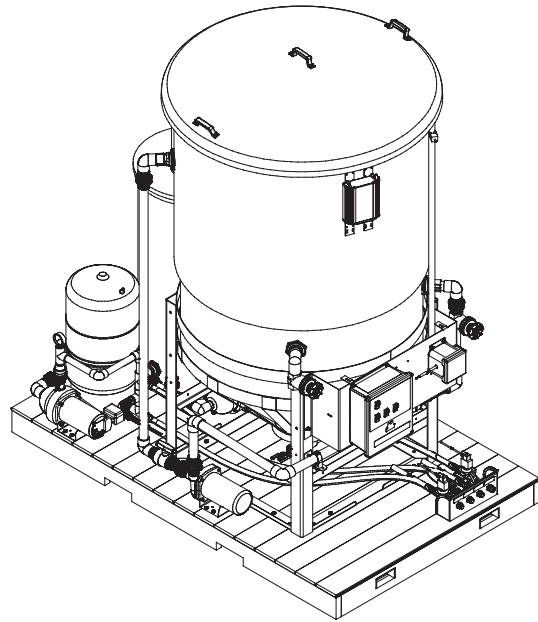
SAFETY WARNINGS

1. Serious injury or death could occur if the water treatment system is not properly grounded. Your water treatment system is powered by electricity and may cause electric shock or electrocution if not installed properly. Installation to this unit, including all electrical connections, must comply with all local, state and national codes. Any electrical wiring or repairs performed on this water treatment system should be done by Authorized Service Personnel in accordance with National and Local electrical codes.
2. NEVER alter or modify the equipment. Use only genuine Mi-T-M parts for repair of your water treatment system. Failure to do so can cause hazardous operating conditions and will VOID warranty.
3. Know how to stop and bleed pressures quickly. Be thoroughly familiar with controls. Do not operate without protective cover/guards. Follow the maintenance instructions specified in your operator's manual.
4. Before servicing, ALWAYS shut off the water and the unit. Allow the unit to cool down. NEVER assume the water treatment system is safe to work on just because it is not operating. It could restart at any time! ALWAYS disconnect from the power source. Service in a clean, dry flat area.
5. Be especially careful it properly dispose of any flammable materials. Consult Materials Safety Data Sheets for safe handling of chemicals used with your system, especially oxidizers and acids.

Table of Contents

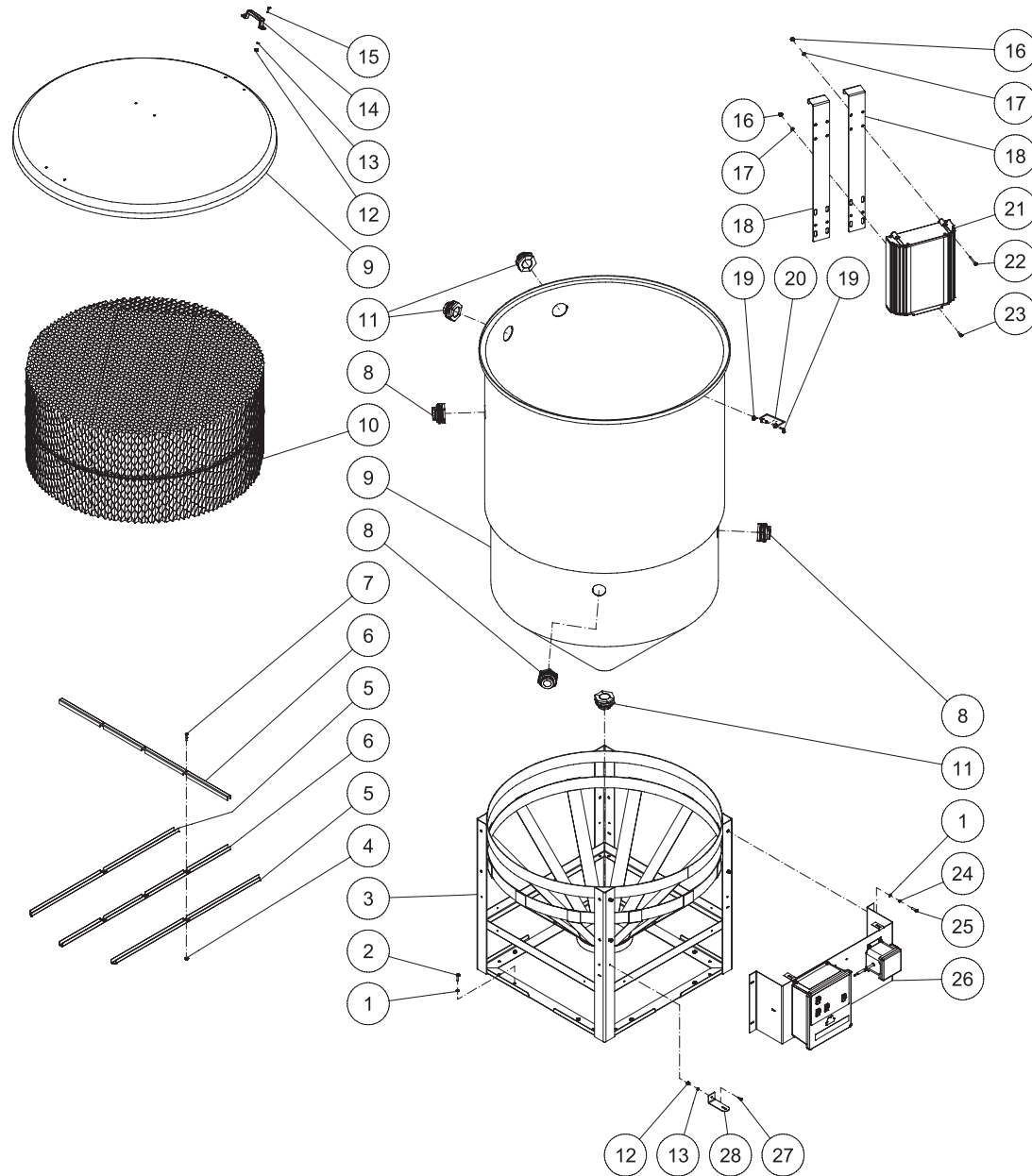
MAIN ASSEMBLY	4
TANK ASSEMBLY	6
PLUMBING: AERATION INLET	8
AERATION PUMP	9
SUMP PUMP	10
PLUMBING: PRODUCT TANK INLET	11
PLUMBING: AERATION OUTLET (AFTER SERIAL #30001104)	12
PRODUCT TANK ASSEMBLY	14
TRANSFER PUMP ASSEMBLY	16
TRANSFER PUMP (3-0181) (SINGLE PHASE)	18
TRANSFER PUMP (3-0321) (THREE PHASE)	20
LOW PROFILE MANIFOLD ASSEMBLY	22
SOLENOID	24
PLUMBING: INLET	25
SUMP PIT ASSEMBLY	26
DRAIN ASSEMBLY	28
CONTROL PANEL ASSEMBLY	29
CONTROL BOX ASSEMBLY (SINGLE PHASE)	30
CONTROL BOX ASSEMBLY (THREE PHASE)	32
OZONE OPTIONS	34
PLUMBING: OZONE INLET	35
PLUMBING: OZONE OUTLET	36
OZONE PUMP (3-0186)	38
OZONE PUMP (3-0323)	40
ELECTRICAL SCHEMATIC (SINGLE PHASE)	42
ELECTRICAL DIAGRAM (SINGLE PHASE)	43
ELECTRICAL SCHEMATIC (THREE PHASE)	44
ELECTRICAL DIAGRAM (THREE PHASE)	45

MAIN ASSEMBLY



BIO-15 101409-PJH			
MAIN ASSEMBLY			
ITEM	DESCRIPTION	PART #	QTY
1	OZONE OUTLET PLUMBING - BIO-15	N/A	1
2	TANK ASSEMBLY - BIO-15	N/A	1
3	INLET PLUMBING - BIO-15-0M10	N/A	1
4	CONTROL PANEL ASSEMBLY -BIO-15-0M10	N/A	1
5	5' X 8' PALLET	35-0034	1
6	AERATION INLET PLUMBING - BIO-15	N/A	1
7	OZONE INLET PLUMBING - BIO-15	N/A	1
8	TRANSFER PUMP ASSEMBLY - BIO-15	N/A	1
9	PRODUCT TANK ASSEMBLY - BIO-15	N/A	1
10	PRODUCT TANK INLET PLUMBING - BIO-15	N/A	1
11	AERATION OUTLET PLUMBING - BIO-15	N/A	1
12	PUMP -PERISTALTIC METERING	3-0220	1
13	LOW PROFILE MANIFOLD ASSEMBLY	N/A	1
14	DRAIN ASSEMBLY - BIO-15-0M10	N/A	1
15	CONTROL BOX ASSEMBLY - BIO-15-0M10	N/A	1
16	OZONE GENERATOR	32-0866	1

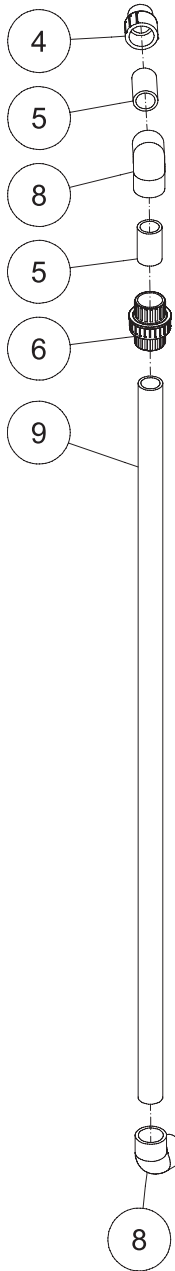
TANK ASSEMBLY



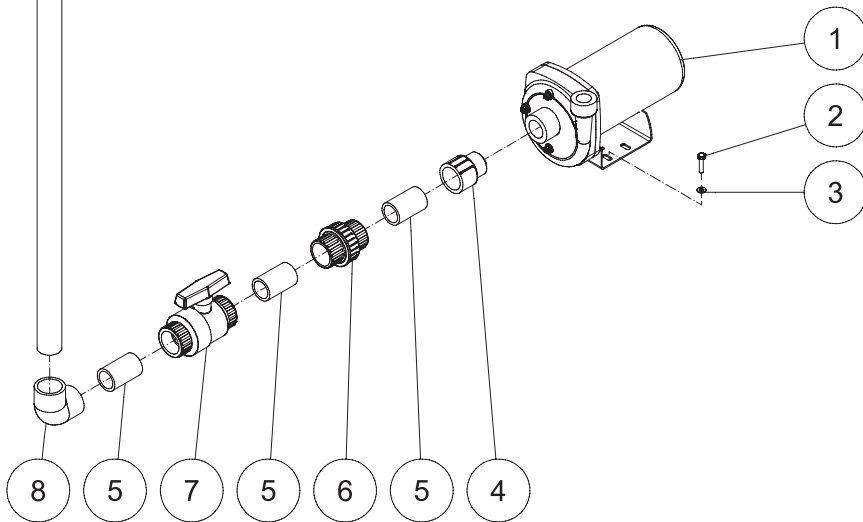
TANK ASSY BIO-15-101409-PJH

TANK ASSEMBLY BIO-15-101409-PJH			
TANK ASSEMBLY			
ITEM	DESCRIPTION	PART #	QTY
1	WASHER	28-0122	12
2	BOLT	27-5276	8
3	TANK STAND	20-0595	1
4	NUT	30-5202	3
5	SIDE BRACE	21-0204	2
6	MAIN BRACE	21-0203	2
7	BOLT	27-5031	3
8	BULKHEAD	55-1686	3
9	TANK	12-0069	1
10	MEDIA	33-0308	3.5
11	BULKHEAD	55-1886	3
12	LOCKNUT	30-5155	7
13	WASHER	28-0121	7
14	HANDLE	7-0164	3
15	BOLT	27-5018	6
16	LOCKNUT	30-8152	4
17	WASHER	28-0010	4
18	HANGER BRACKET	21-0177	2
19	ELBOW	55-0114	2
20	BULKHEAD	55-0115	1
21	OZONE GENERATOR	32-0865	1
22	BOLT	27-5032	2
23	SCREW	27-8835	2
24	LOCKWASHER	29-1007	4
25	BOLT	27-8963	4
26	CONTROL PANEL ASSEMBLY	N/A	1
27	BOLT	27-5016	1
28	WCL CLAMP BRACKET	20-0555	1

PLUMBING: AERATION INLET

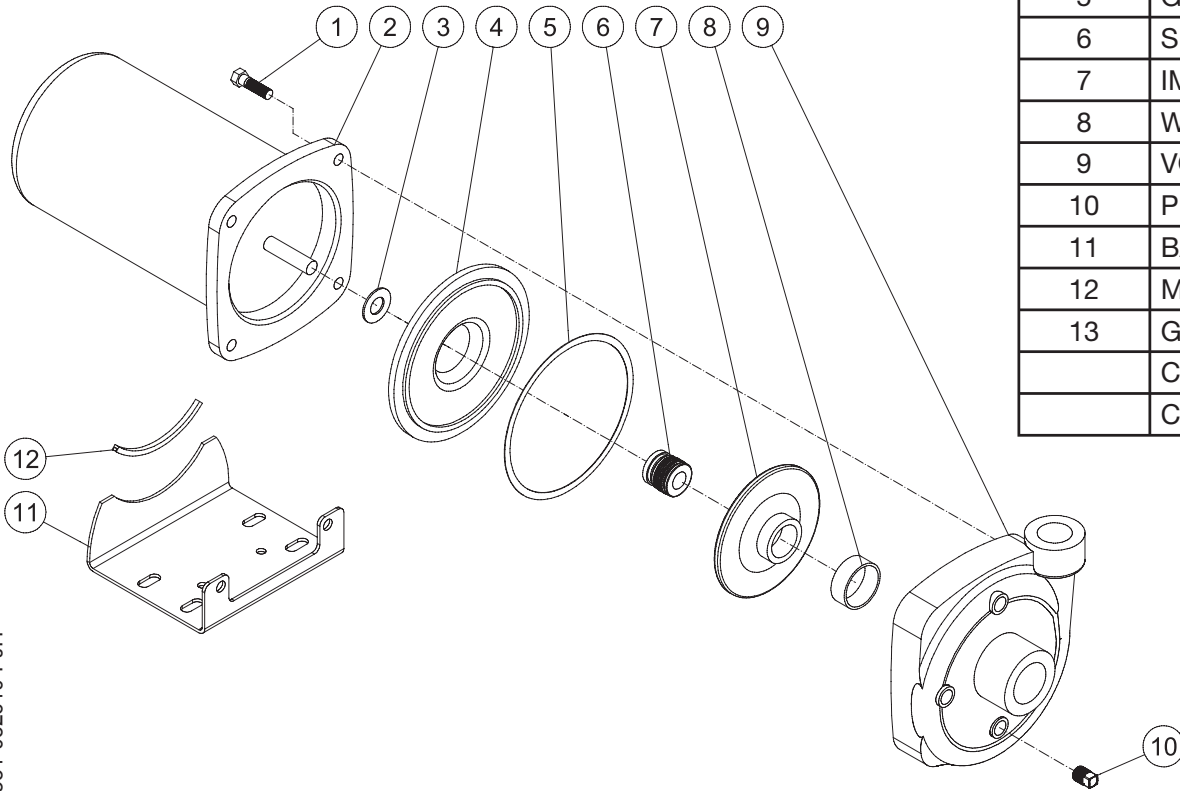


AERATION INLET PLUMBING BIO-15 100909-PJH			
PLUMBING: AERATION INLET			
ITEM	DESCRIPTION	PART #	QTY
1	PUMP 1PH	3-0331	1
-	PUMP 3PH	3-0321	1
2	BOLT	27-5276	4
3	WASHER	28-0122	4
4	ADAPTOR	55-1622	2
5	PIPE (ONE FOOT REQUIRED)	55-1600	5
6	UNION	55-1645	2
7	BALL VALVE	55-1655	1
8	ELBOW	55-1609	2
9	PIPE (SIX FEET REQUIRED)	55-1600	1



AERATION INLET PLUMBING-BIO-15 100909-PJH

AERATION PUMP



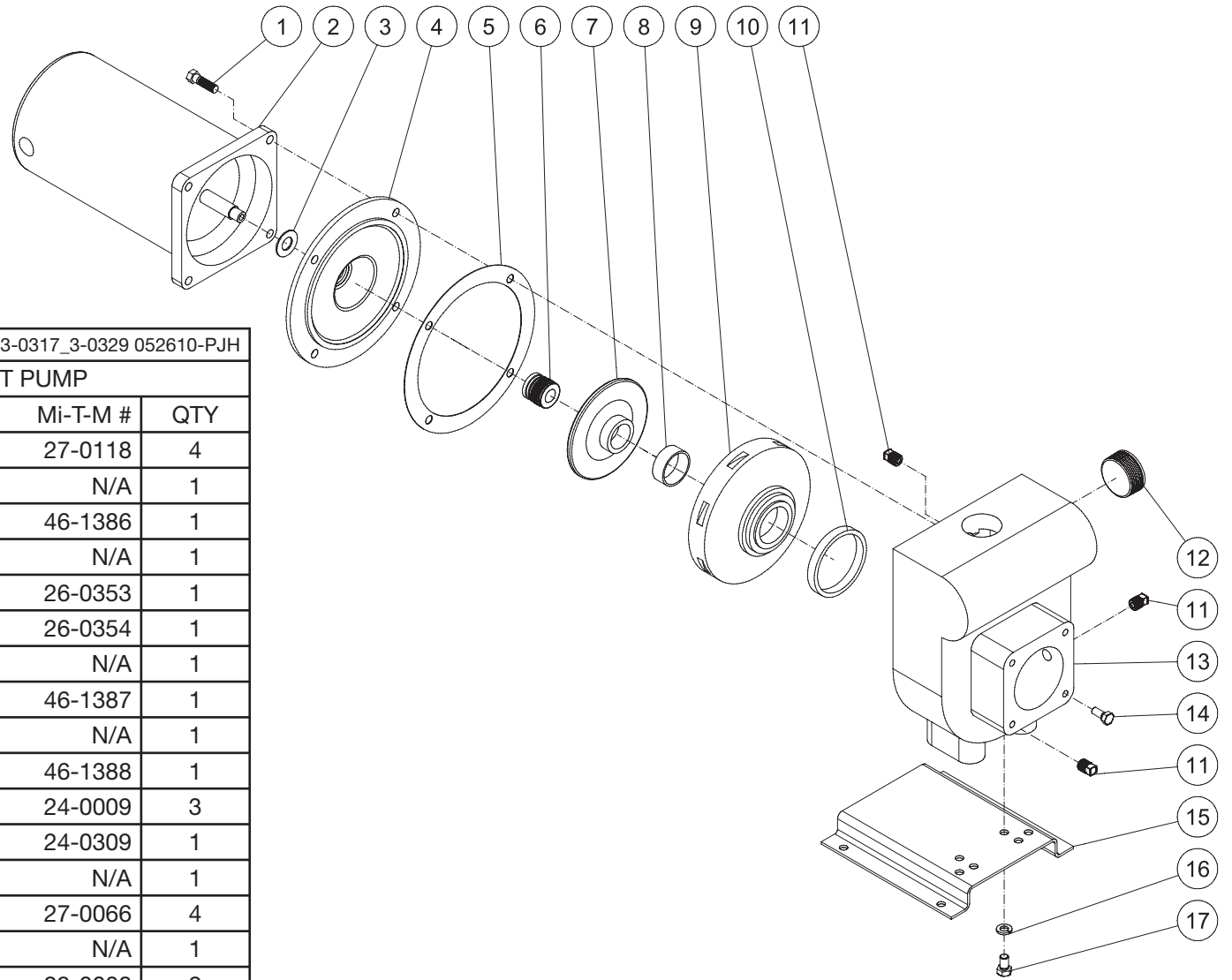
3-0321_3-0331 052610 PJH

STRAINER BASKET PUMP

ITEM	DESCRIPTION	Mi-T-M #	QTY
1	BOLT	27-0118	4
2	MOTOR	N/A	1
3	WATER SLINGER	46-1386	1
4	SEAL PLATE	N/A	1
5	GASKET - VOLUTE	N/A	1
6	SHAFT SEAL	26-0354	1
7	IMPELLER	N/A	1
8	WEAR RING	46-1387	1
9	VOLUTE ASSEMBLY	N/A	1
10	PLUG	24-0009	3
11	BASE	N/A	1
12	MOTOR PAD	N/A	1
13	GASKET/O-RING KIT (#'S 3, 5, & 6)	70-0537	1
	COMPLETE PUMP (SINGLE PHASE)	3-0331	1
	COMPLETE PUMP (THREE PHASE)	3-0321	1

3-0331_3-0331-052610-PJH

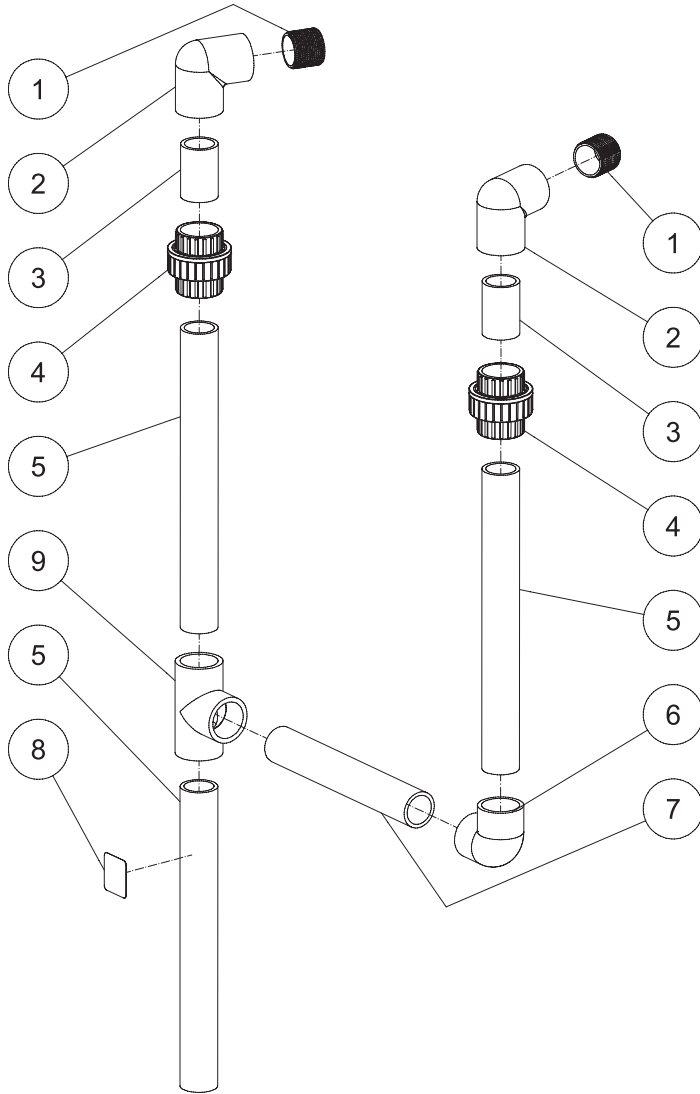
SUMP PUMP



3-0317_3-0329 052610-PJH			
STRAINER BASKET PUMP			
ITEM	DESCRIPTION	Mi-T-M #	QTY
1	BOLT	27-0118	4
2	PUMP/FILTER	N/A	1
3	WATER SLINGER	46-1386	1
4	SEAL PLATE	N/A	1
5	GASKET	26-0353	1
6	SHAFT SEAL	26-0354	1
7	IMPELLER	N/A	1
8	WEAR RING	46-1387	1
9	DIFFUSER	N/A	1
10	DIFFUSER RING	46-1388	1
11	PLUG	24-0009	3
12	PLUG	24-0309	1
13	PUMP BODY	N/A	1
14	BOLT	27-0066	4
15	BASE	N/A	1
16	LOCKWASHER	29-0008	2
17	BOLT	N/A	2
	COMPLETE PUMP (SINGLE PHASE)	3-0328	1
	COMPLETE PUMP (THREE PHASE)	3-0317	1

3-0317_3-0328-052610-PJH

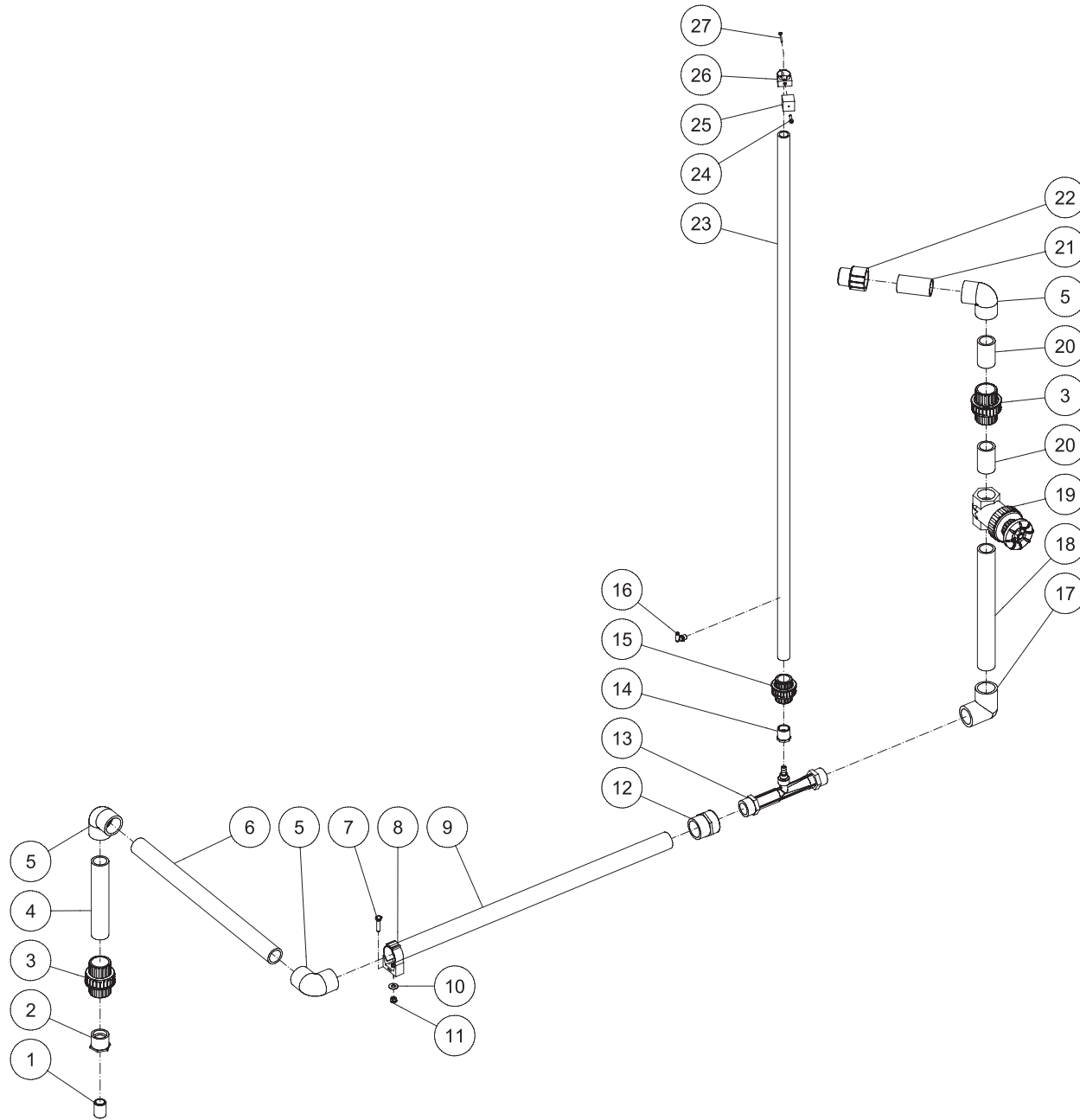
PLUMBING: PRODUCT TANK INLET



PRODUCT TANK INLET PLUMBING BIO-15-101609-PJH

PLUMBING PRODUCT TANK INLET BIO 15 101609-PJH			
PLUMBING: PRODUCT TANK INLET			
ITEM	DESCRIPTION	PART #	QTY
1	NIPPLE	55-1874	2
2	ELBOW	55-1810	2
3	PIPE (ONE FOOT REQUIRED)	55-1800	2
4	UNION	55-1845	2
5	PIPE (TWO FEET REQUIRED)	55-1800	3
6	ELBOW	55-1809	1
7	PIPE (TWO FEET REQUIRED)	55-1800	1
8	DECAL - OUTLET	34-0891	1
9	TEE	55-1801	1

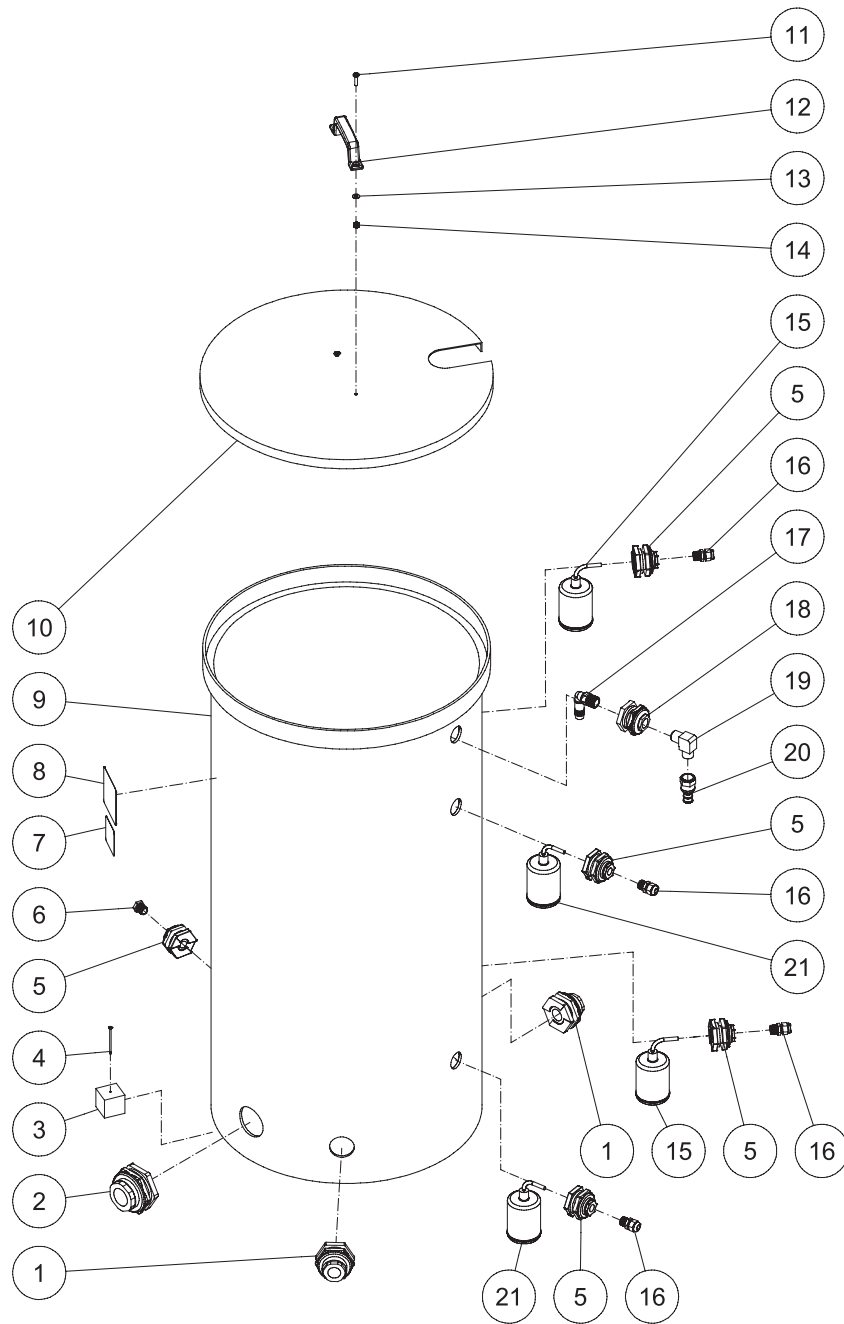
PLUMBING: AERATION OUTLET (AFTER SERIAL #30001104)



AERATION OUTLET PLUMBING-BIO-15-100909-PJH

AERATION OUTLET PLUMBING BIO-15 100909-PJH			
PLUMBING: AERATION OUTLET (AFTER SERIAL #30001104)			
ITEM	DESCRIPTION	PART #	QTY
1	NIPPLE	55-1274	1
2	REDUCER	55-1629	1
3	UNION	55-1645	2
4	PIPE (ONE FOOT REQUIRED)	55-1600	1
5	ELBOW	55-1609	3
6	PIPE (THREE FEET REQUIRED)	55-1600	1
7	BOLT	27-0119	1
8	CLAMP	42-0026	1
9	PIPE (THREE FEET REQUIRED)	55-1600	1
10	WASHER	28-0023	1
11	LOCKNUT	30-0159	1
12	ADAPTOR	55-1621	1
13	MAZZEI	55-0033	1
14	REDUCER	55-1229	1
15	UNION	55-1245	1
16	ELBOW	55-0100	1
17	ELBOW	55-1610	1
18	PIPE (TWO FEET REQUIRED)	55-1600	1
19	GATE VALVE	55-1671	1
20	PIPE (ONE FOOT REQUIRED)	55-1600	2
21	PIPE (ONE FOOT REQUIRED)	55-1600	1
22	ADAPTOR	55-1622	1
23	PIPE (SIX FEET REQUIRED)	55-1200	1
24	SCREW	27-5278	1
25	PLASTIC BLOCK (ONE FOOT REQUIRED)	35-003404	1
26	CLAMP	42-0038	1
27	SCREW	27-9594	1

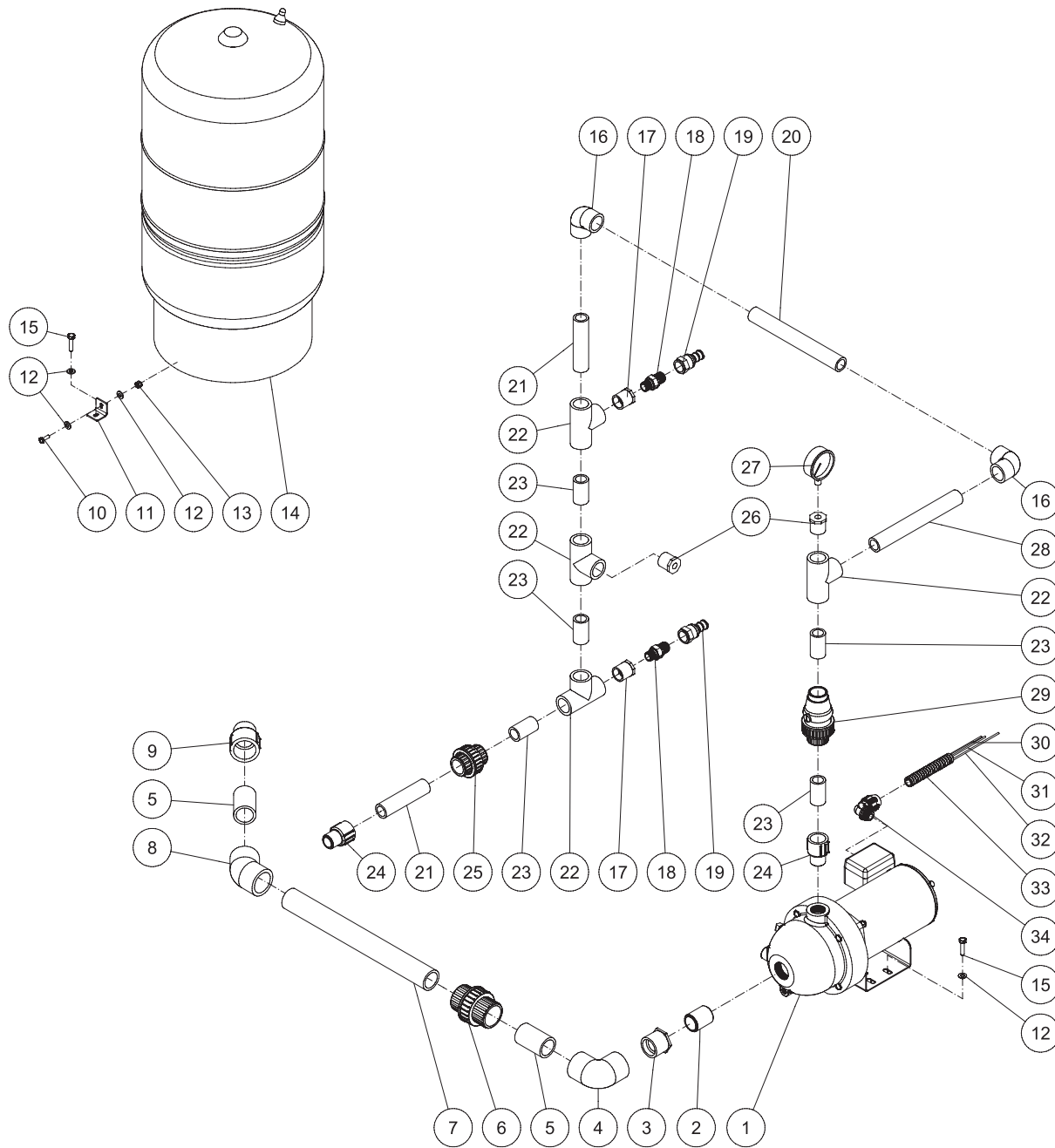
PRODUCT TANK ASSEMBLY



PRODUCT TANK ASSY-BIO 15-101409-PJH

PRODUCT TANK ASSEMBLY BIO-15 101409-PJH			
PRODUCT TANK ASSEMBLY			
ITEM	DESCRIPTION	PART #	QTY
1	BULKHEAD	55-1286	2
2	BULKHEAD	55-1686	1
3	BLOCK (ONE FOOT REQUIRED)	35-003404	3
4	SCREW	27-8925	3
5	BULKHEAD	55-0886	5
6	PLUG	55-0840	1
7	DECAL - WARNING - INHALATION HAZARD	N/A SEP.	1
8	DECAL - NONPOTABLE WATER	N/A SEP.	1
9	TANK	12-0094	1
10	LID	12-0097	1
11	BOLT	27-5018	2
12	HANDLE	7-0164	1
13	WASHER	28-0121	2
14	LOCKNUT	30-5155	2
15	FLOAT	32-0664	2
16	STRAIN RELIEF	32-0437	4
17	ELBOW	55-0069	1
18	BULKHEAD	55-0010	1
19	ELBOW	23-0364	1
20	BARB	23-0358	1
21	FLOAT	32-0663	2

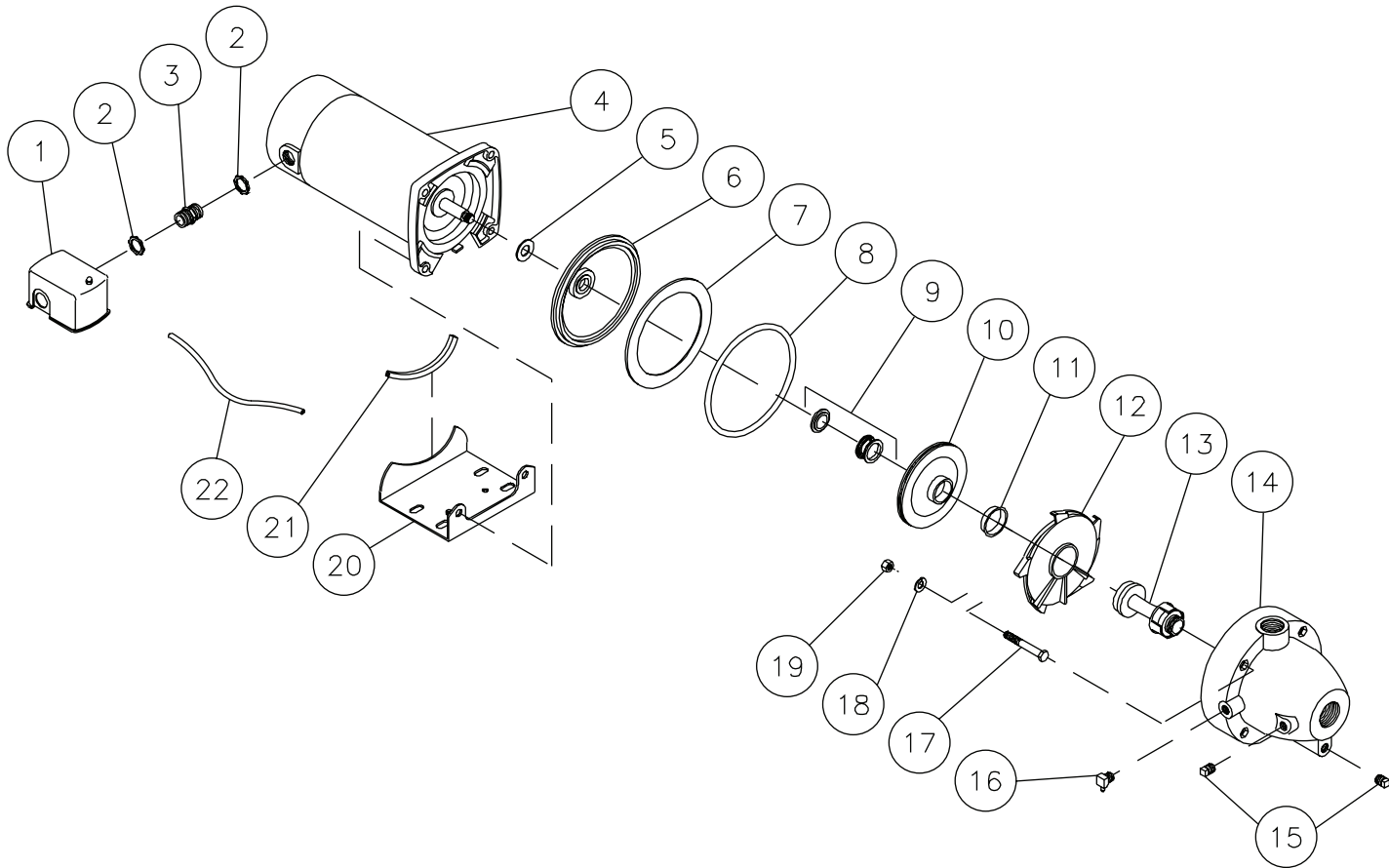
TRANSFER PUMP ASSEMBLY



TRANSFER PUMP ASSY-101409-PJH

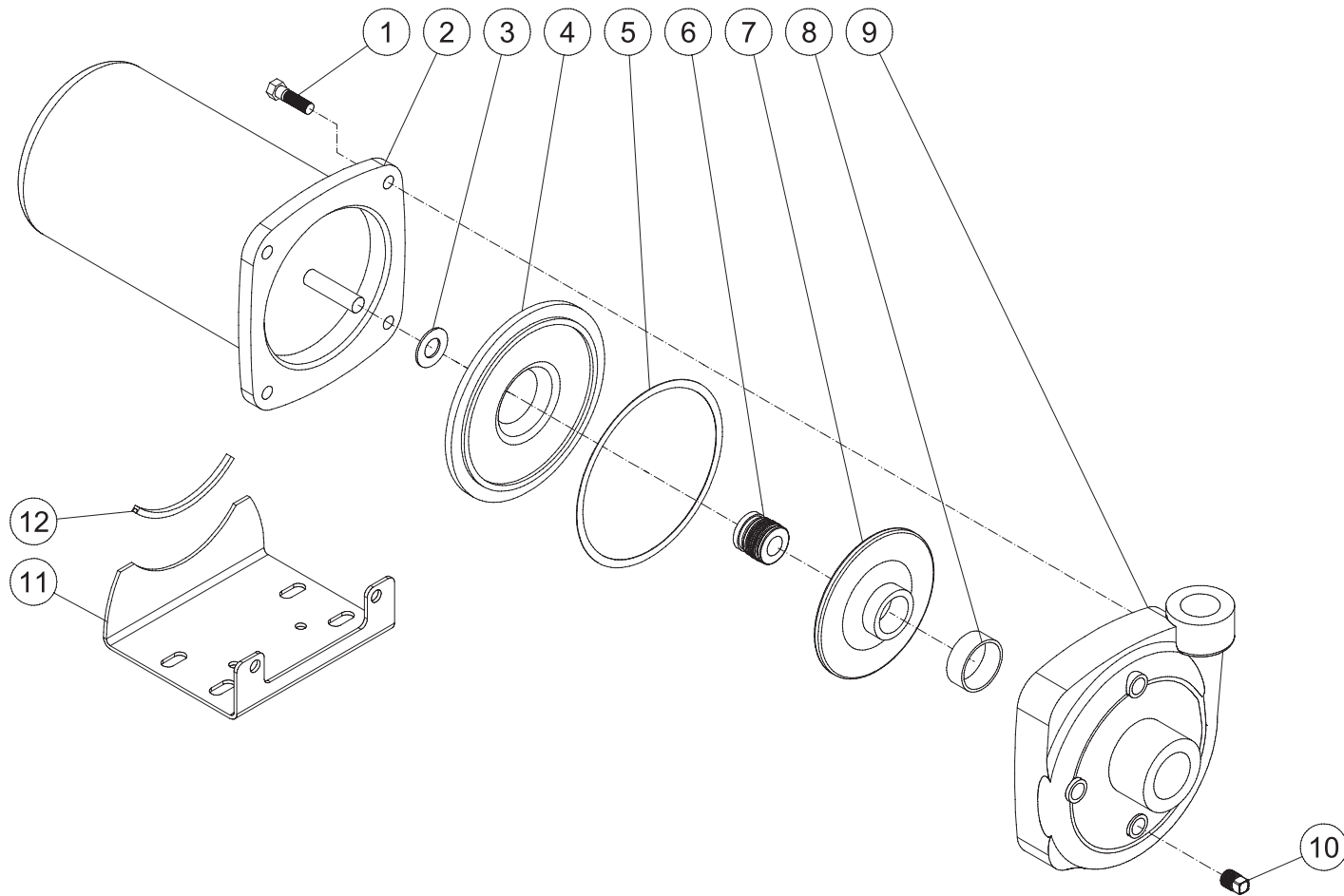
TRANSFER PUMP ASSEMBLY							
ITEM	DESCRIPTION	PART #	QTY	ITEM	DESCRIPTION	PART #	QTY
1	TRANSFER PUMP (SINGLE PHASE)	3-0181	1	18	NIPPLE	23-0359	2
-	TRANSFER PUMP (THREE PHASE)	3-0321	1	19	BARB	23-0358	2
2	NIPPLE	55-1474	1	20	PIPE (ONE FOOT REQUIRED)	55-1200	1
3	REDUCER	55-1629	1	21	PIPE (ONE FOOT REQUIRED)	55-1200	2
4	ELBOW	55-1609	1	22	TEE	55-1201	4
5	PIPE (ONE FOOT REQUIRED)	55-1600	2	23	PIPE (ONE FOOT REQUIRED)	55-1200	5
6	UNION	55-1645	1	24	ADAPTER	55-1222	2
7	PIPE (TWO FEET REQUIRED)	55-1600	1	25	UNION	55-1245	1
8	ELBOW	55-1612	1	26	REDUCER	55-1231	2
9	ADAPTOR	55-1622	1	27	PRESSURE GAUGE	22-0280	1
10	BOLT	27-5016	3	28	PIPE (ONE FOOT REQUIRED)	55-1200	1
11	BRACKET	21-0127	3	29	CHECK VALVE	55-1252	1
12	WASHER	28-0122	13	30	WIRE *(TEN FEET REQUIRED)	32-0248	1
13	LOCKNUT	30-5155	3	31	WIRE *(TEN FEET REQUIRED)	32-0256	3
14	PRESSURE TANK	12-0081	1	32	WIRE *(TEN FEET REQUIRED)	32-0094	1
15	BOLT	27-5276	7	33	CONDUIT FLEX *(EIGHT FEET REQUIRED)	32-0253	1
16	ELBOW	55-1209	2	34	CONDUIT ELBOW	32-0254	1
17	REDUCER	55-1229	2				

TRANSFER PUMP (3-0181) (SINGLE PHASE)



TRANSFER PUMP (3-0181)							
REF. #	DESCRIPTION	PART#	QTY.	REF. #	DESCRIPTION	PART#	QTY.
1	Pressure Switch	22-0293	1	13	Venturi	46-0836	1
2	Locknut	32-0108	2	14	Case	46-0837	1
3	Fitting	54-0040	1	15	Plug	39-0109	2
4	Motor (See 3-0181)	N/A Sep.	1	16	Elbow	23-0381	1
5	Rubber Washer (See 3-0181)	N/A Sep.	1	17	Bolt	27-8937	4
6	Seal Plate	26-0214	1	18	Lock Washer	29-0008	4
7	Disk	46-0834	1	19	Nut	30-0006	4
8	O-ring (See 70-0257)	N/A Sep.	1	20	Base (Includes Ref. 21)	5-0144	1
9	Seal	26-0215	1	21	Rubber Protector	33-0320	1
10	Impeller (See 70-0257)	N/A Sep.	1	22	Hose	15-0210	1
11	Wear Ring	46-0835	1		Impeller Kit (Includes 8-12)	70-0257	1
12	Diffuser (See 70-0257)	N/A Sep.	1		Transfer Pump (Includes 1-22)	3-0181	

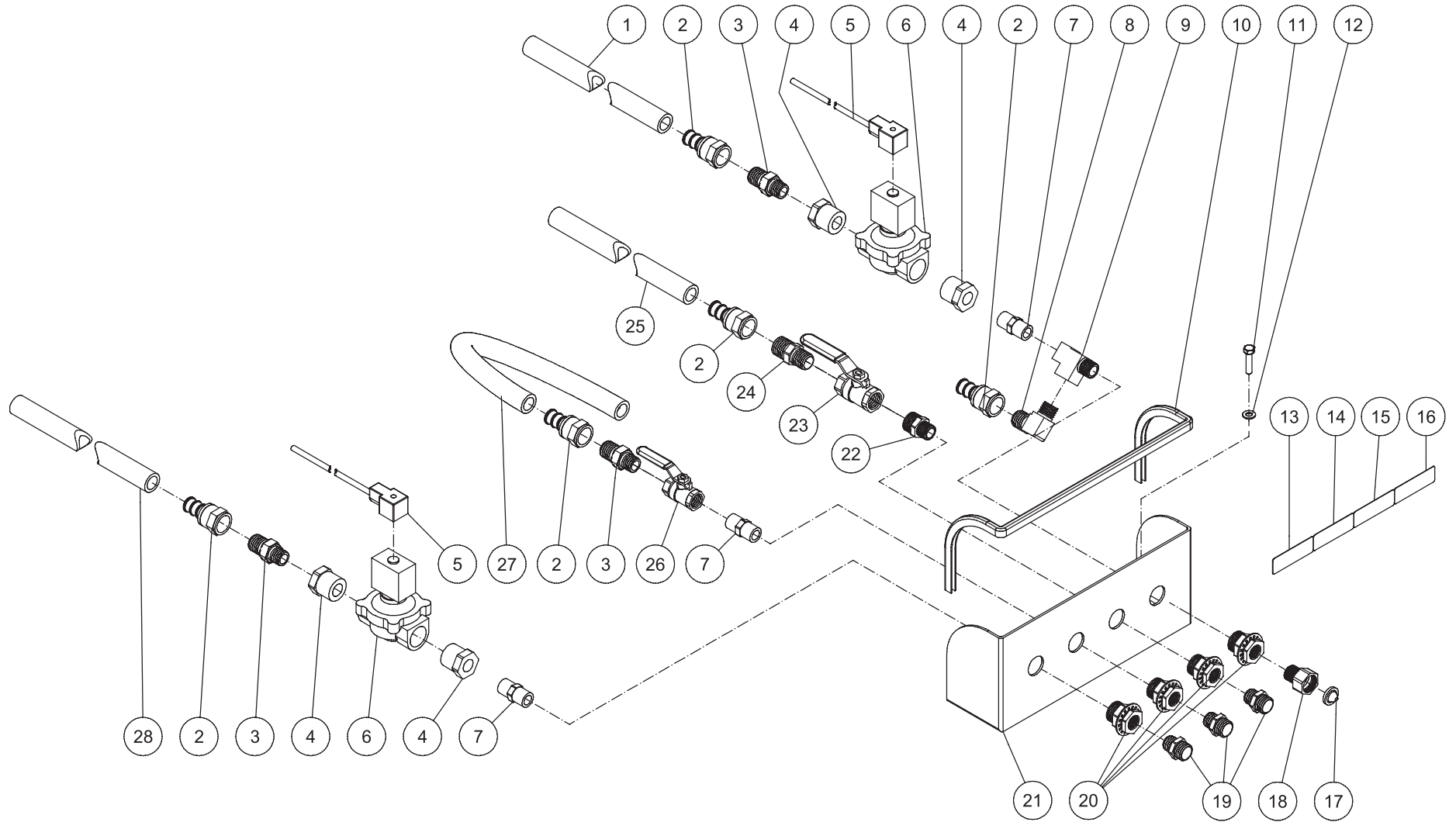
TRANSFER PUMP (3-0321) (THREE PHASE)



3-0321-081109-PJH

3-0321 081109-PJH			
STRAINER BASKET PUMP			
ITEM	DESCRIPTION	Mi-T-M #	QTY
1	BOLT	27-0118	4
2	MOTOR	N/A	1
3	WATER SLINGER	46-1386	1
4	SEAL PLATE	N/A	1
5	GASKET - VOLUTE	N/A	1
6	SHAFT SEAL	26-0354	1
7	IMPELLER	N/A	1
8	WEAR RING	46-1387	1
9	VOLUTE ASSEMBLY	N/A	1
10	PLUG	24-0009	3
11	BASE	N/A	1
12	MOTOR PAD	N/A	1
13	GASKET/O-RING KIT (#'S 3, 5, & 6)	70-0537	1

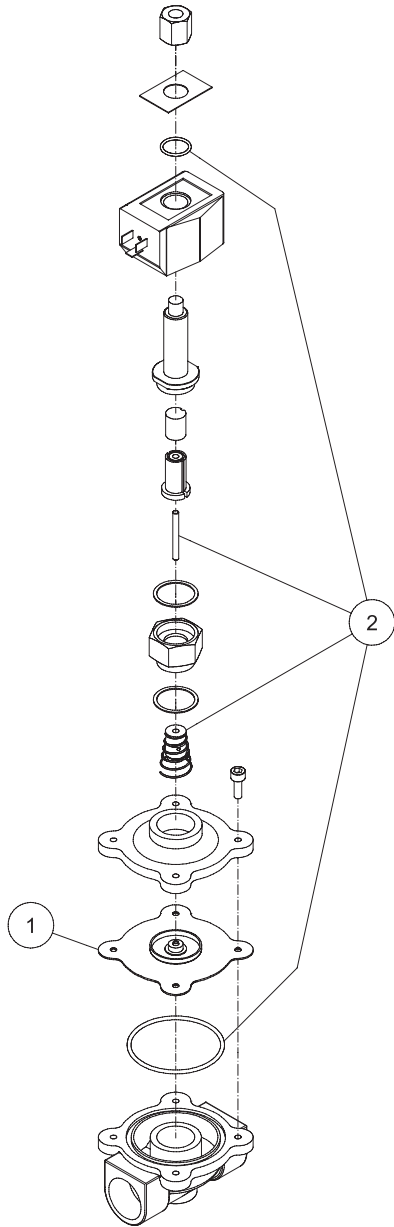
LOW PROFILE MANIFOLD ASSEMBLY



LOW PROFILE MANIFOLD ASSY-BIO-15-101309-PJH

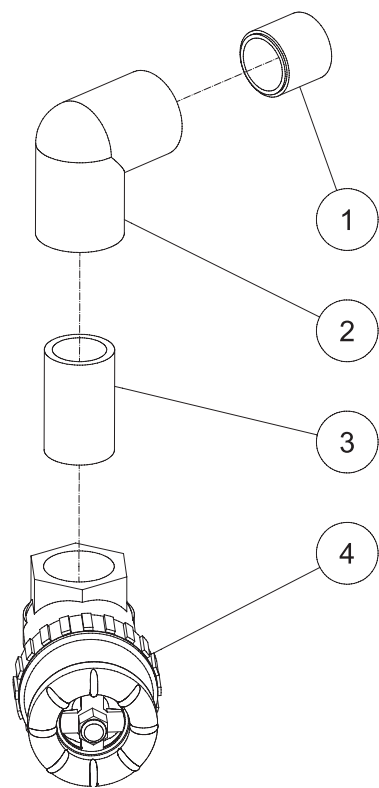
LOW PROFILE MANIFOLD ASSY BIO 15 101309-PJH			
LOW PROFILE MANIFOLD ASSEMBLY			
ITEM	DESCRIPTION	PART #	QTY
1	HOSE (NINE FEET REQUIRED)	15-0033	1
2	HOSE BARB	23-0358	5
3	NIPPLE	23-0359	3
4	REDUCER	23-0226	4
5	CORDSET	32-0786	2
6	SOLENOID-NC	22-0442	2
7	NIPPLE	23-0012	3
8	ELBOW	23-0363	1
9	TEE	23-0124	1
10	EDGING (THREE FEET REQUIRED)	33-0020	1
11	BOLT	27-5276	4
12	WASHER	28-0122	4
13	DECAL	34-0878	1
14	DECAL - RINSE WATER OUTLET	34-0876	1
15	DECAL	34-0877	1
16	DECAL	34-0879	1
17	FILTER	19-0001	1
18	SWIVEL	23-0095	1
19	ADAPTER	23-0136	3
20	ADAPTER	23-0365	4
21	MANIFOLD	21-0116	1
22	NIPPLE	23-0082	1
23	BALL VALVE	22-0279	1
24	NIPPLE	23-0362	1
25	HOSE (SIX FEET REQUIRED)	15-0033	1
26	BALL VALVE	22-0278	1
27	HOSE (TWO FEET REQUIRED)	15-0033	1
28	HOSE (SIX FEET REQUIRED)	15-0033	1

SOLENOID



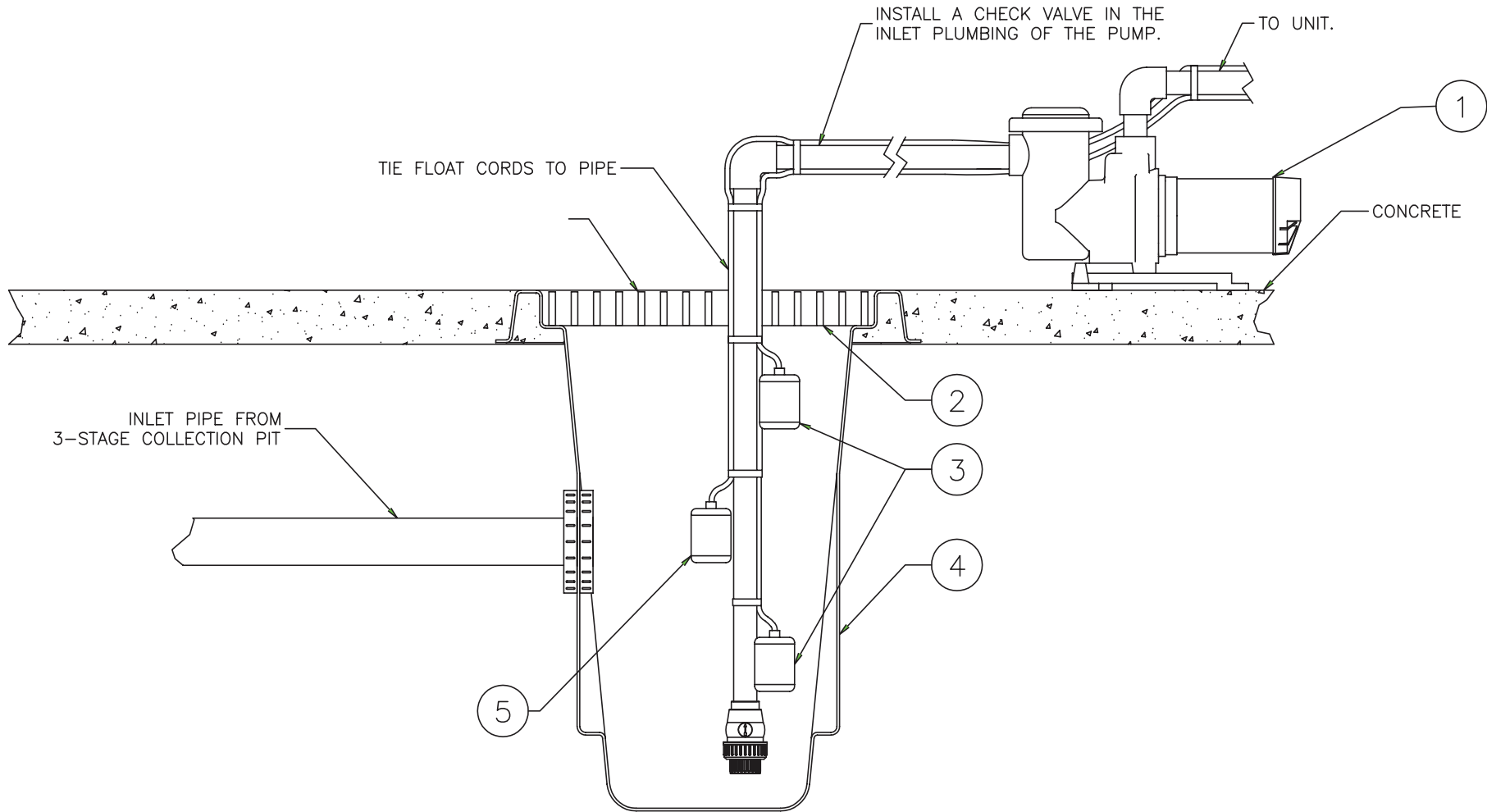
22-0442 041910-PJH			
SOLENOID			
ITEM	DESCRIPTION	PART #	QTY
1	KIT - REPLACEMENT DIAPHRAGM	70-0492	1
2	KIT - REPLACEMENT O-RINGS, SPRING, & PLUNGER	70-0493	1

PLUMBING: INLET



INLET PLUMBING-100909-PJH			
PLUMBING: INLET			
REF. #	DESCRIPTION	PART#	QTY.
1	NIPPLE	55-1674	1
2	ELBOW	55-1610	1
3	"PIPE *(1 1/2" X 3")	55-1600	1
4	GATE VALVE	55-1671	1
*MUST ORDER IN ONE FOOT LENGTHS			

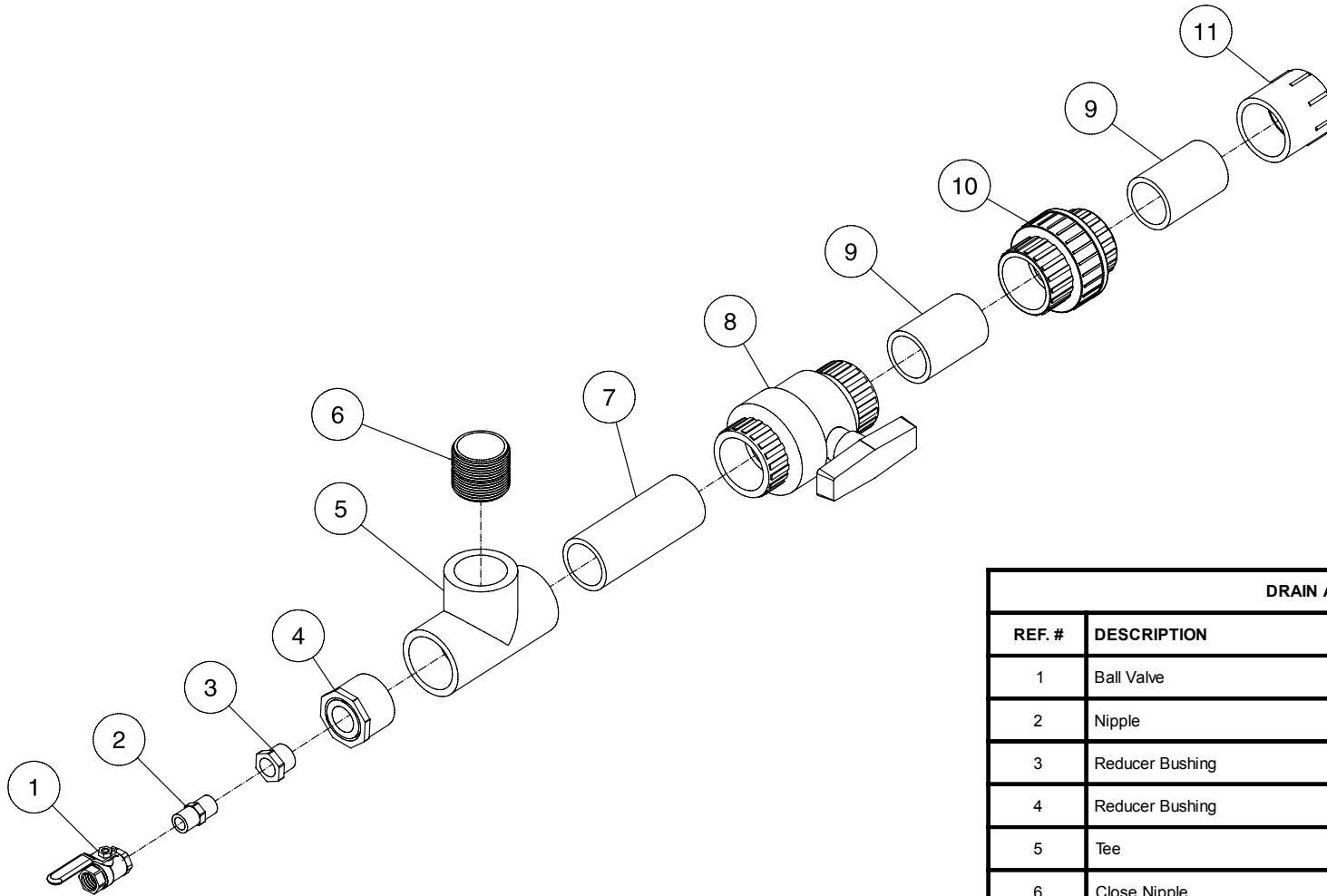
SUMP PIT ASSEMBLY



SUMP PIT ASSEMBLY-072006-PJH

SUMP PIT ASSEMBLY			
REF. #	DESCRIPTION	PART#	QTY.
1	Pump (Single Phase)	3-0328	1
-	Pump (Three Phase)	3-0317	1
2	Medium Grate	20-0480A01	1
3	Blue Float	32-0528	2
4	Pit	12-0071	1
5	Red Float	32-0530	1

DRAIN ASSEMBLY

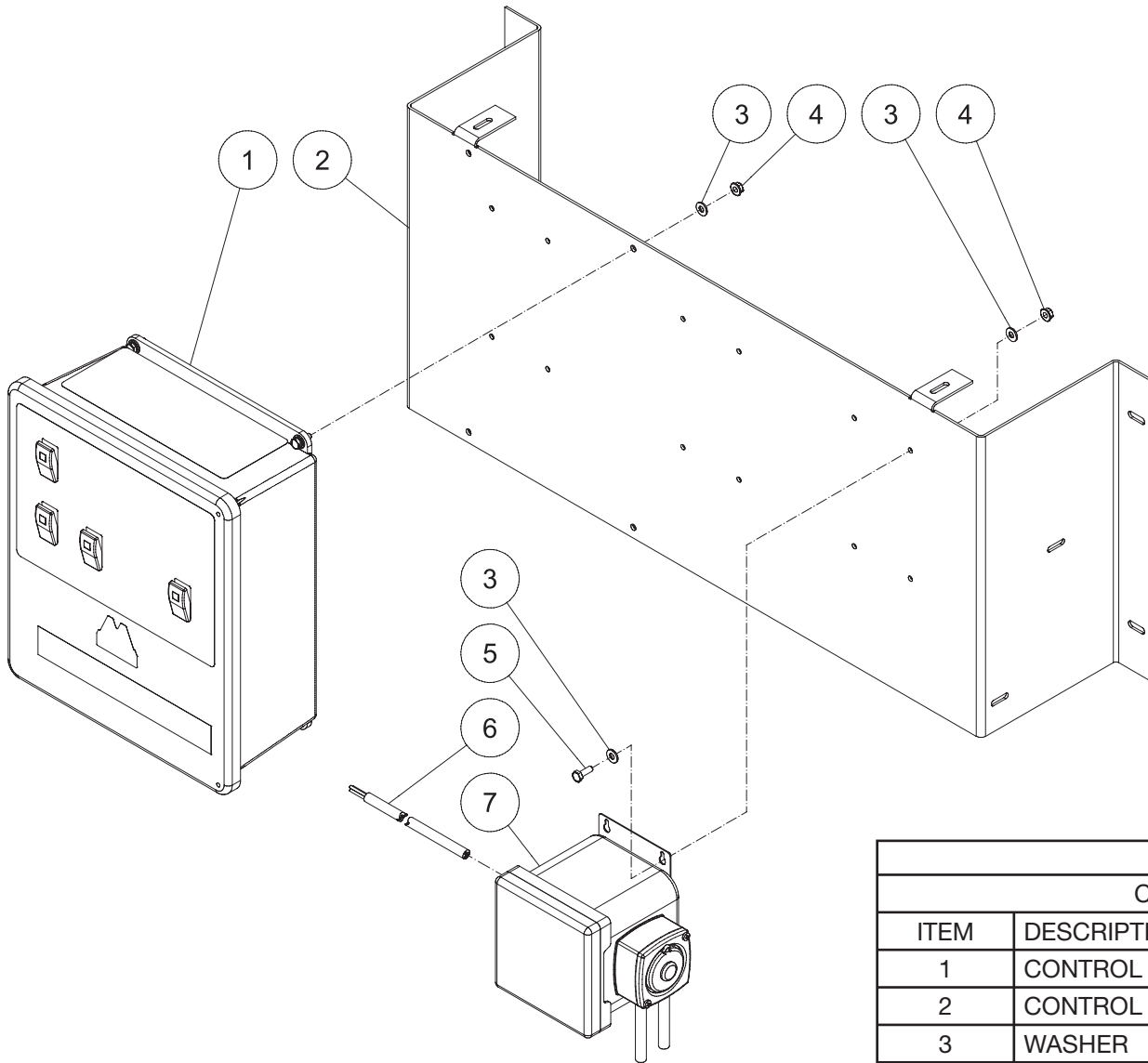


DRAIN ASSEMBLY-071706-PJH

DRAIN ASSEMBLY			
REF. #	DESCRIPTION	PART#	QTY.
1	Ball Valve	22-0278	1
2	Nipple	23-0012	1
3	Reducer Bushing	55-1234	1
4	Reducer Bushing	55-1830	1
5	Tee	55-1807	1
6	Close Nipple	55-1874	1
7	Pipe *(2" x 6")	55-1800	1
8	Ball Valve	55-1855	1
9	Pipe *(2" x 3 1/2")	55-1800	2
10	Union	55-1845	1
11	Female Adapter	55-1821	1
*Must Order in One Foot Lengths			

DRAIN ASSY-071706-PJH

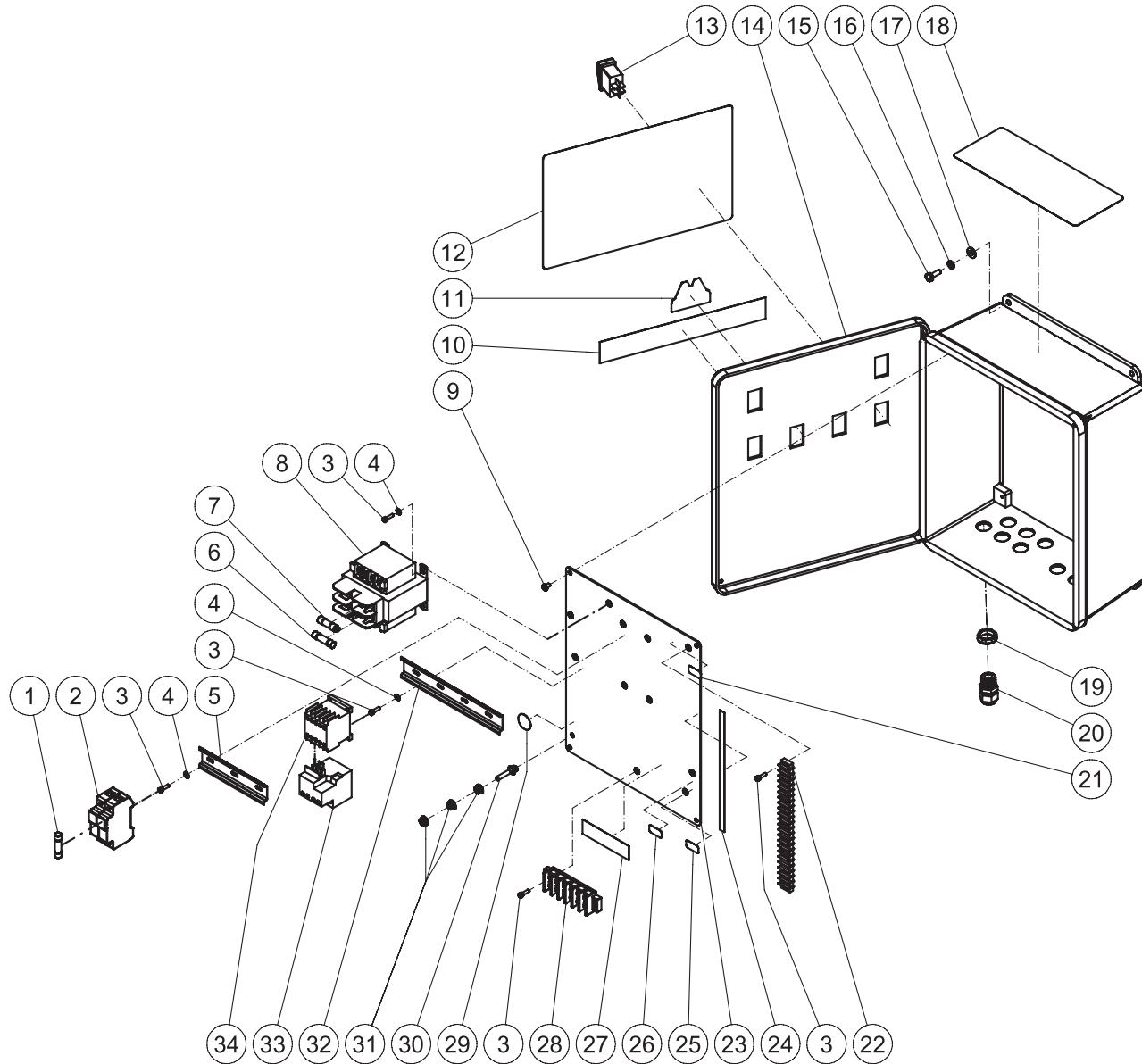
CONTROL PANEL ASSEMBLY



CONTROL PANEL ASSEMBLY 100909-PJH			
CONTROL PANEL ASSEMBLY			
ITEM	DESCRIPTION	PART #	QTY
1	CONTROL BOX ASSEMBLY	DWG	1
2	CONTROL PANEL	20-0523	1
3	WASHER	28-0121	8
4	NUT	30-5202	6
5	BOLT	27-5016	2
6	CORD (THREE FEET REQUIRED)	32-0074	1
7	PUMP	3-0220	1

CONTROL PANEL ASSY-100909-PJH

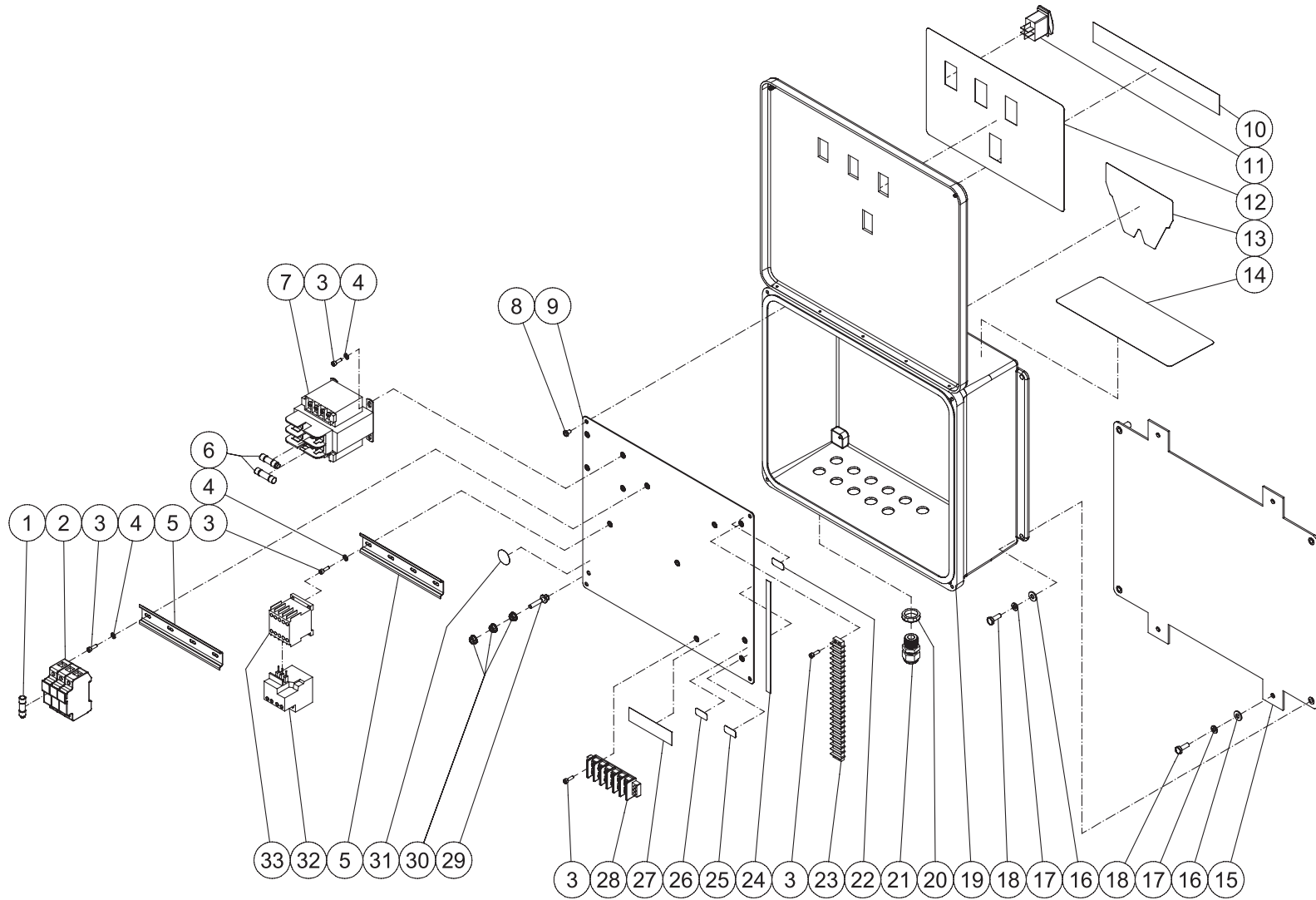
CONTROL BOX ASSEMBLY (SINGLE PHASE)



CONTROL PANEL BIO-15-0M10 (1M10)-101609-PJH

CONTROL PANEL BIO-15-0M10 (1M10)			
CONTROL BOX			
ITEM	DESCRIPTION	PART #	QTY
1	FUSE	32-1025	6
-	FUSE	32-1026	2
2	FUSE HOLDER	32-1006	4
3	SCREW	27-8835	10
4	STAR WASHER	28-1009	6
5	DIN RAIL (ONE FOOT REQUIRED)	32-0316	1
6	FUSE	32-1028	1
7	FUSE	32-0740	2
8	TRANSFORMER	32-0735	1
9	SCREW	27-8933	4
10	DECAL - 1.5" X 10.5" STRIPE	34-2267	1
11	DECAL - Mi-T-M	34-2167	1
12	DECAL - BIO ELECTRIC BOX	34-1306	1
13	ROCKER SWITCH	32-0669	6
14	ELECTRIC BOX	32-1030	1
15	BOLT	27-5016	4
16	LOCKWASHER	29-1006	4
17	WASHER	28-0121	4
18	DECAL - OPERATION	34-0984	1
19	ELECTRICAL LOCKNUT	32-0108	11
20	STRAIN RELIEF	32-0437	11
21	DECAL - 115 VOLT (SEE 34-1009)	34-0897	1
22	TERMINAL STRIP	32-0463	1
23	ELECTRICAL PLATE	20-0520A06	1
24	DECAL-TERMINAL STRIP 1-22	34-1481	1
25	DECAL - 1 PHASE	34-0964	1
26	DECAL - 230 VOLT *(SEE 34-1009)	34-0895	1
27	DECAL - TERMINAL STRIP 32-36	34-0990	1
28	TERMINAL BLOCK	32-0536	1
29	DECAL- GROUND PICTORAL *(SEE 34-1009)	34-0889	1
30	BOLT	27-8898	1
31	NUT	30-3022	3
32	DIN RAIL (ONE FOOT REQUIRED)	32-0316	1
33	OVERLOAD (OZONE)	32-1015	1 (2)
-	OVERLOAD	32-1016	2
34	CONTACTOR (OZONE)	32-1009	3 (4)

CONTROL BOX ASSEMBLY (THREE PHASE)



CONTROL PANEL BIO-15-0M30 (1M30)-082609-PJH

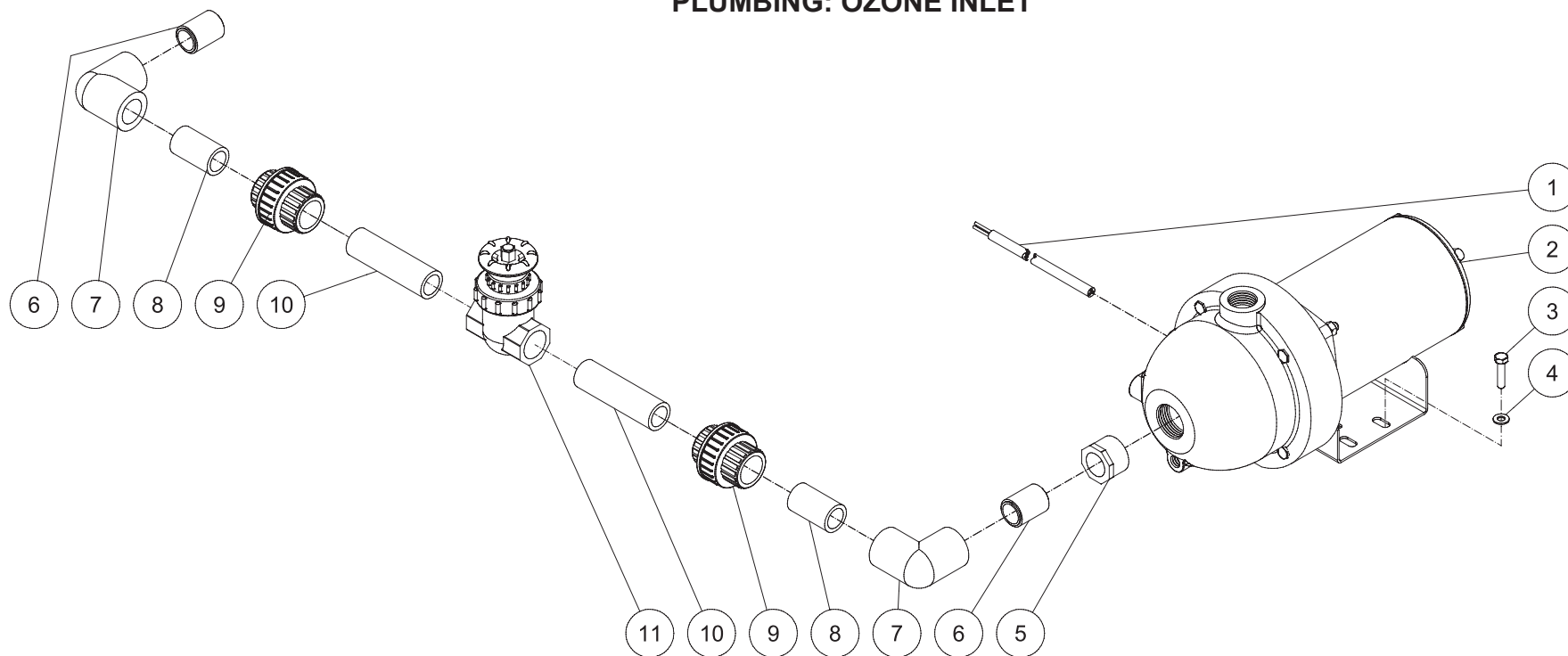
CONTROL BOX

ITEM	DESCRIPTION	Mi-T-M #	QTY	ITEM	DESCRIPTION	Mi-T-M #	QTY
1	FUSE (208V, 230V)	32-1024	3	17	LOCKWASHER	29-1006	8
-	FUSE (460V)	32-1023	9	18	BOLT	27-5016	8
-	FUSE (208V, 230V)	32-1025	6	19	ELECTRIC BOX	32-1031	1
-	FUSE (460V)	32-0741	3	20	ELECTRICAL LOCKNUT	32-0108	11
-	FUSE (208V, 230V)	32-0470	3	21	STRAIN RELIEF	32-0437	11
2	FUSE HOLDER	32-1007	4	22	DECAL - 115 VOLT (SEE 34-1009)	34-0897	1
3	SCREW	27-8835	12	23	TERMINAL STRIP	32-0463	1
4	STAR WASHER	28-1009	8	24	DECAL-TERMINAL STRIP 1-22	34-1481	1
5	DIN RAIL *(ONE FOOT REQUIRED)	32-0316	2	25	DECAL - 3 PHASE	34-0965	1
6	FUSE (208V, 230V)	32-0740	2	26	DECAL - 230 VOLT *(SEE 34-1009)	34-0895	1
-	FUSE (460V)	32-0467	2	27	DECAL - TERMINAL STRIP 32-36	34-0990	1
-	FUSE (208V, 230V, 460V)	32-1028	1	28	TERMINAL BLOCK	32-0536	1
7	TRANSFORMER	32-0735	1	29	BOLT	27-8898	1
8	SCREW	27-8933	4	30	NUT	30-3022	3
9	ELECTRICAL PLATE	20-1065A06	1	31	DECAL- GROUND PICTORAL *(SEE 34-1009)	34-0889	1
10	DECAL - 11" STRIPE	34-2186	1	32	OVERLOAD (208V, 230V)	32-1014	1
11	ROCKER SWITCH	32-0669	4	-	OVERLOAD (460V)	32-1011	3
12	DECAL - BIO ELECTRIC BOX	34-1306	1	-	OVERLOAD (208V, 230V)	32-1013	2
13	DECAL - Mi-T-M	34-2169	1	-	OVERLOAD (460V) (OZONE)	32-1010	1
14	DECAL - OPERATION	34-0984	1	-	OVERLOAD (208V, 230V) (OZONE)	32-1012	1
15	MOUNTING PLATE	20-1126A01	1	33	CONTACTOR (OZONE)	32-1009	3 (4)
16	WASHER	28-0121	8				

OZONE OPTIONS

WX-0020	230V SINGLE PHASE FOR BIO-15-0M10
WX-0044	208-230V THREE PHASE FOR BIO-15-0M30
WX-0045	460V THREE PHASE FOR BIO-15-0M30 WITH WX-0043

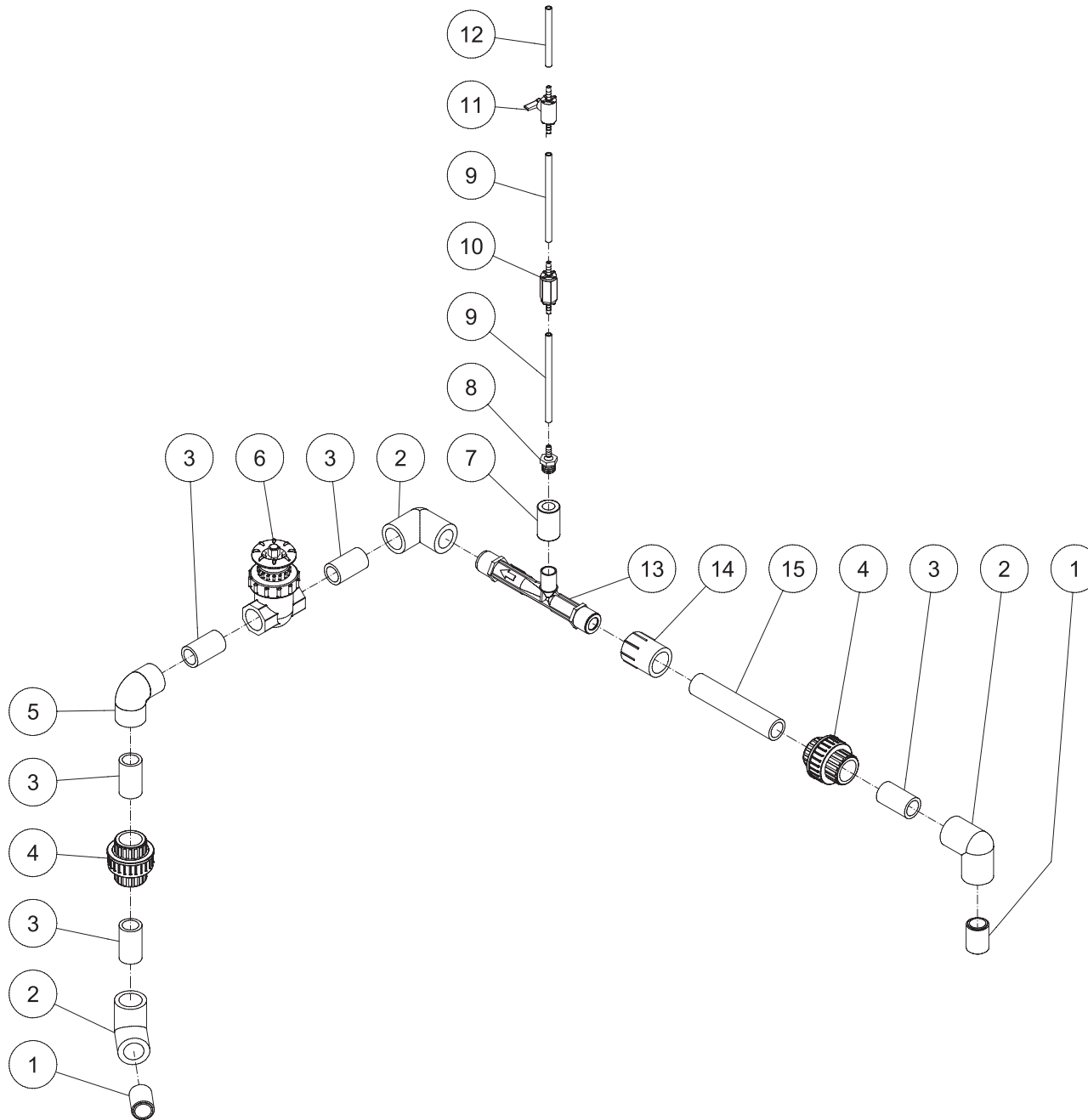
PLUMBING: OZONE INLET



OZONE INLET PLUMBING BIO-15-101409-PJH			
PLUMBING: OZONE INLET			
ITEM	DESCRIPTION	PART #	QTY
1	CORD (ELEVEN FEET REQUIRED)	32-0074	1
2	PUMP - 1 PHASE	3-0186	1
-	PUMP - 3 PHASE	3-0323	1
3	BOLT	27-5276	4
4	WASHER	28-0122	4
5	REDUCER	55-1433	1
6	NIPPLE	55-1274	2
7	ELBOW	55-1210	2
8	PIPE (ONE FOOT REQUIRED)	55-1200	2
9	UNION	55-1245	2
10	PIPE (ONE FOOT REQUIRED)	55-1200	2
11	GATE VALVE	55-1271	1

OZONE INLET PLUMBING-BIO-15-101409-PJH

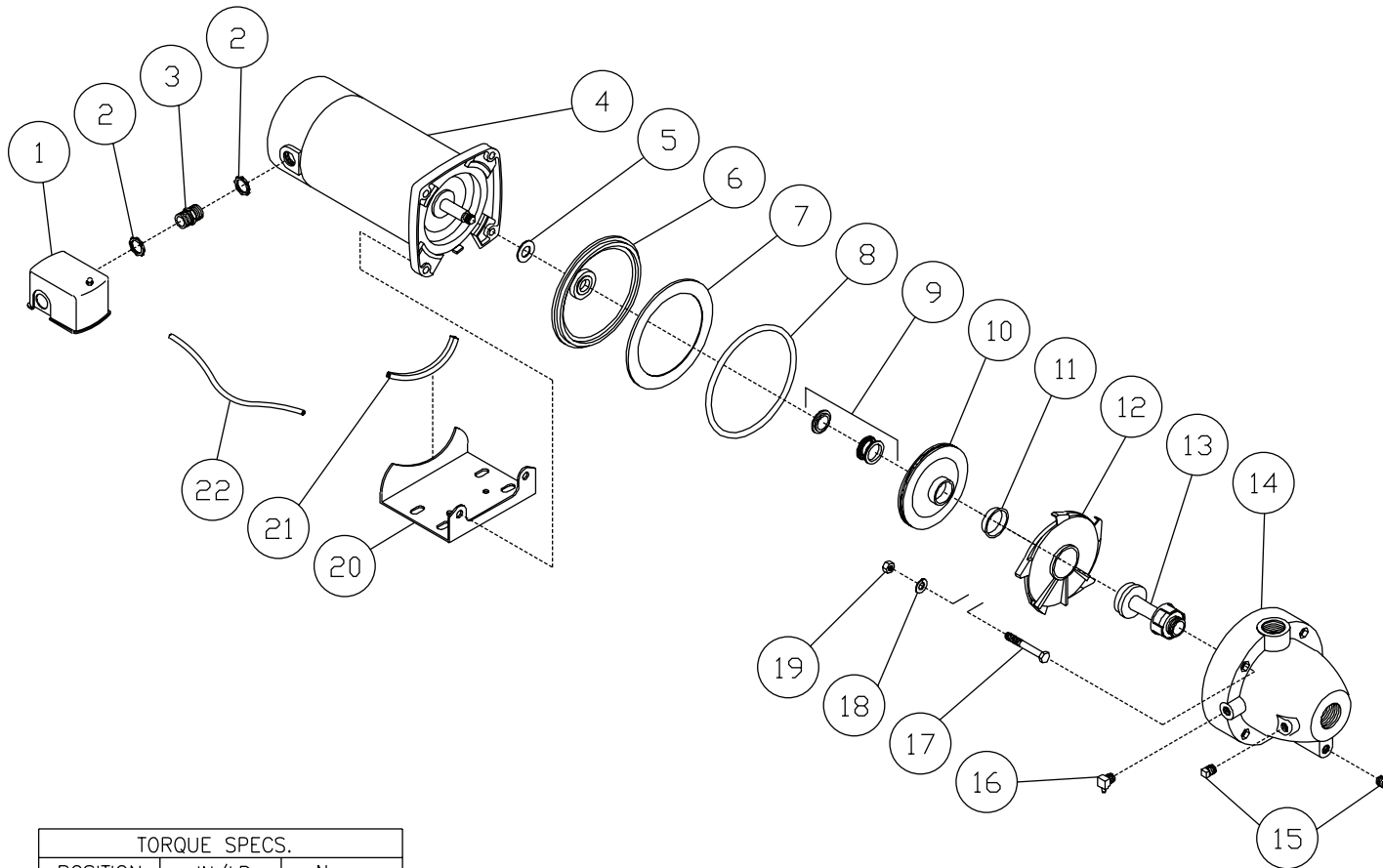
PLUMBING: OZONE OUTLET



OZONE OUTLET PLUMBING-BIO-15-101409-PJH

OZONE OUTLET PLUMBING BIO-15 101409-PJH			
PLUMBING: OZONE OUTLET			
ITEM	DESCRIPTION	PART #	QTY
1	NIPPLE	55-1274	2
2	ELBOW	55-1210	3
3	PIPE (ONE FOOT REQUIRED)	55-1200	5
4	UNION	55-1245	2
5	ELBOW	55-1209	1
6	GATE VALVE	55-1271	1
7	COUPLER	55-0815	1
8	HOSE BARB	55-0023	1
9	HOSE *(ONE FOOT REQUIRED)	15-0226	2
10	CHECK VALVE	22-0286	1
11	VALVE	22-0074	1
12	HOSE *(TEN FEET REQUIRED)	15-0226	1
13	MAZZEI	55-0015	1
14	ADAPTER	55-1221	1
15	PIPE (ONE FOOT REQUIRED)	55-1200	1

OZONE PUMP (3-0186)

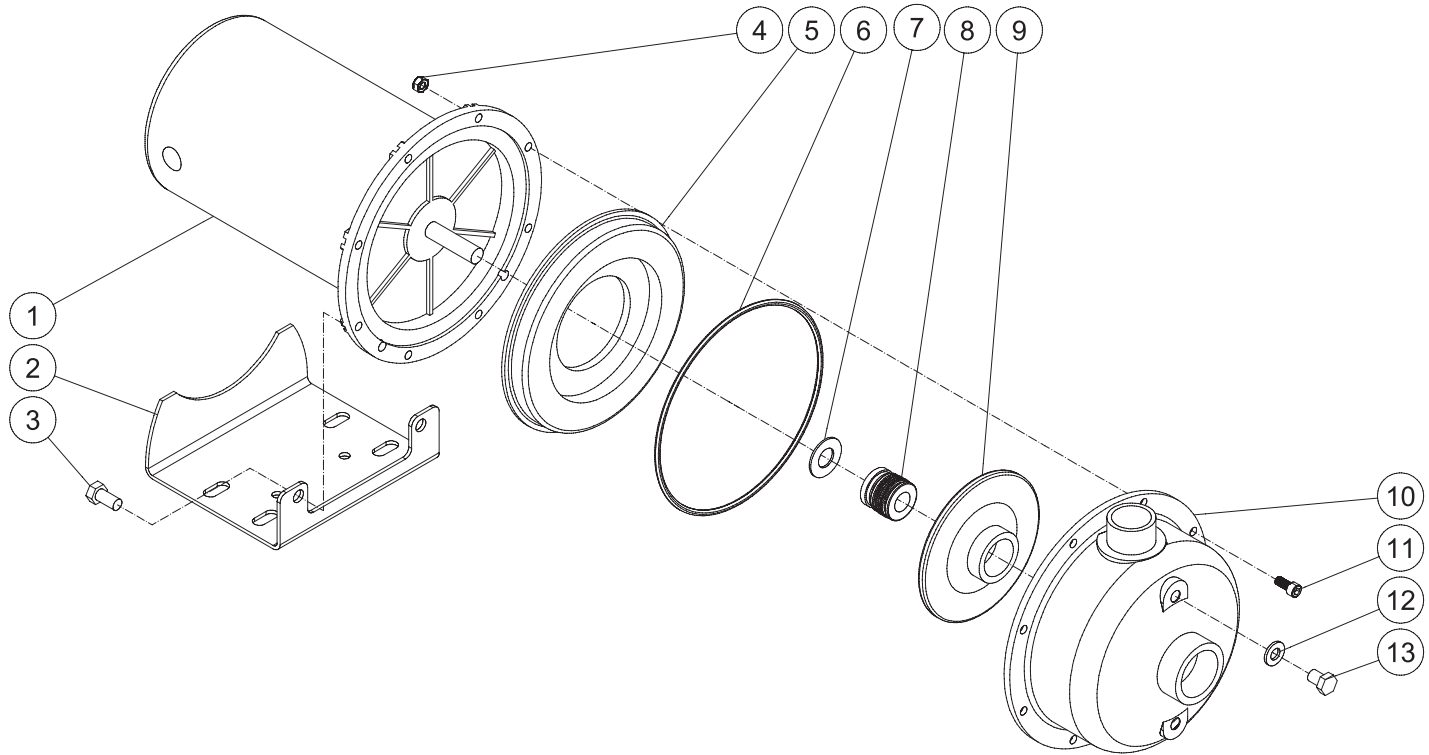


TORQUE SPECS.		
POSITION	IN/LB	N · m
19	150-160	16.9-18.0

3-0186-040600-JJ

OZONE PUMP (3-0186)								
REF. #	DESCRIPTION	PART#	QTY.		REF. #	DESCRIPTION	PART#	QTY.
1	Pressure Switch	22-0293	1		13	Venturi	46-0899	1
2	Locknut	32-0108	2		14	Case	46-0837	1
3	Fitting	54-0040	1		15	Plug	39-0109	2
4	Motor	N/A	1		16	Elbow	23-0381	1
5	Rubber Washer	N/A	1		17	Bolt	27-8937	4
6	Seal Plate	26-0214	1		18	Lock Washer	29-0008	4
7	Disk	46-0898	1		19	Nut	30-0006	4
8	O-ring (See 70-0257)	N/A Sep.	1		20	Base (Includes Ref. 21)	5-0144	1
9	Seal	26-0215	1		21	Rubber Protector	33-0320	1
10	Impeller (See 70-0257)	N/A Sep.	1		22	Hose	15-0210	1
11	Wear Ring	46-0835	1			Impeller Kit (Includes 8-12)	70-0313	1
12	Diffuser (See 70-0257)	N/A Sep.	1			Complete Ozone Pump	3-0186	

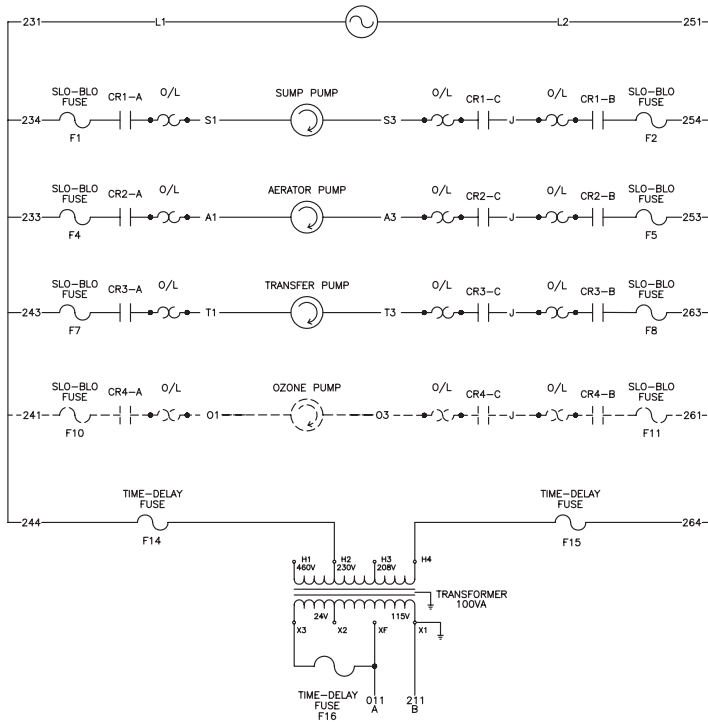
OZONE PUMP (3-0323)



3-0323 072209-PJH			
OZONE PUMP (3-0323)			
ITEM	DESCRIPTION	Mi-T-M #	QTY
1	MOTOR	N/A	1
2	BASE	N/A	1
3	BOLT	27-0116	2
4	NUT	30-0057	8
5	SEAL PLATE	N/A	1
6	O-RING	25-0621	1
7	WATER SLINGER	46-1386	1
8	SHAFT SEAL	26-0354	1
9	IMPELLER	N/A	1
10	CASING/DIFFUSER ASSEMBLY	N/A	1
11	BOLT	27-8401	8
12	WASHER	N/A	2
13	PLUG	N/A	2

ELECTRICAL SCHEMATIC (SINGLE PHASE)

230V 1Ø LADDER DIAGRAM



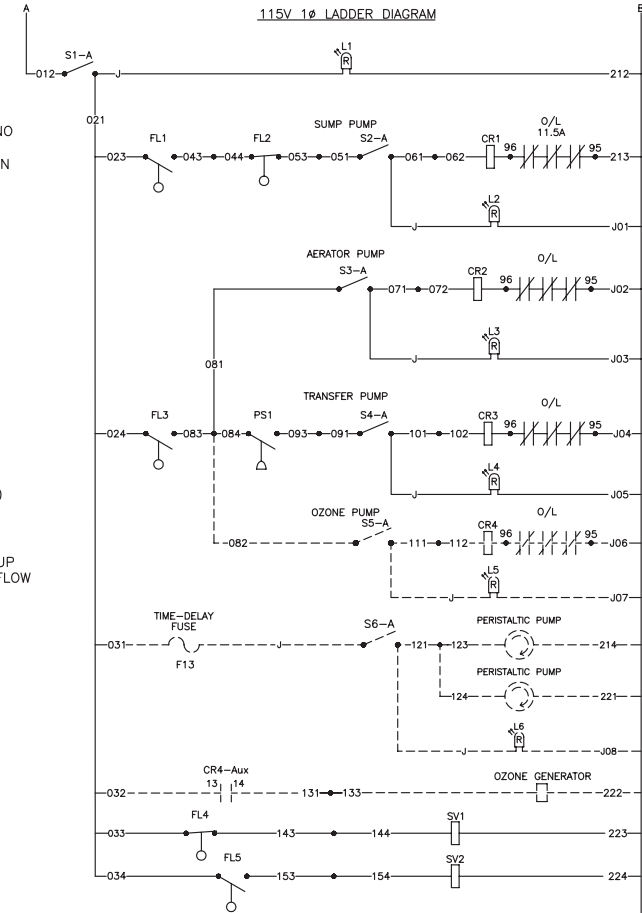
NOTES:

1) LADDER DIAGRAM SHOWN WITH POWER TO UNIT AND NO WATER IN PIT
 2) ALL WIRES ARE 16GA UNLESS OTHERWISE SPECIFIED IN THE TABLE BELOW.

LEGEND

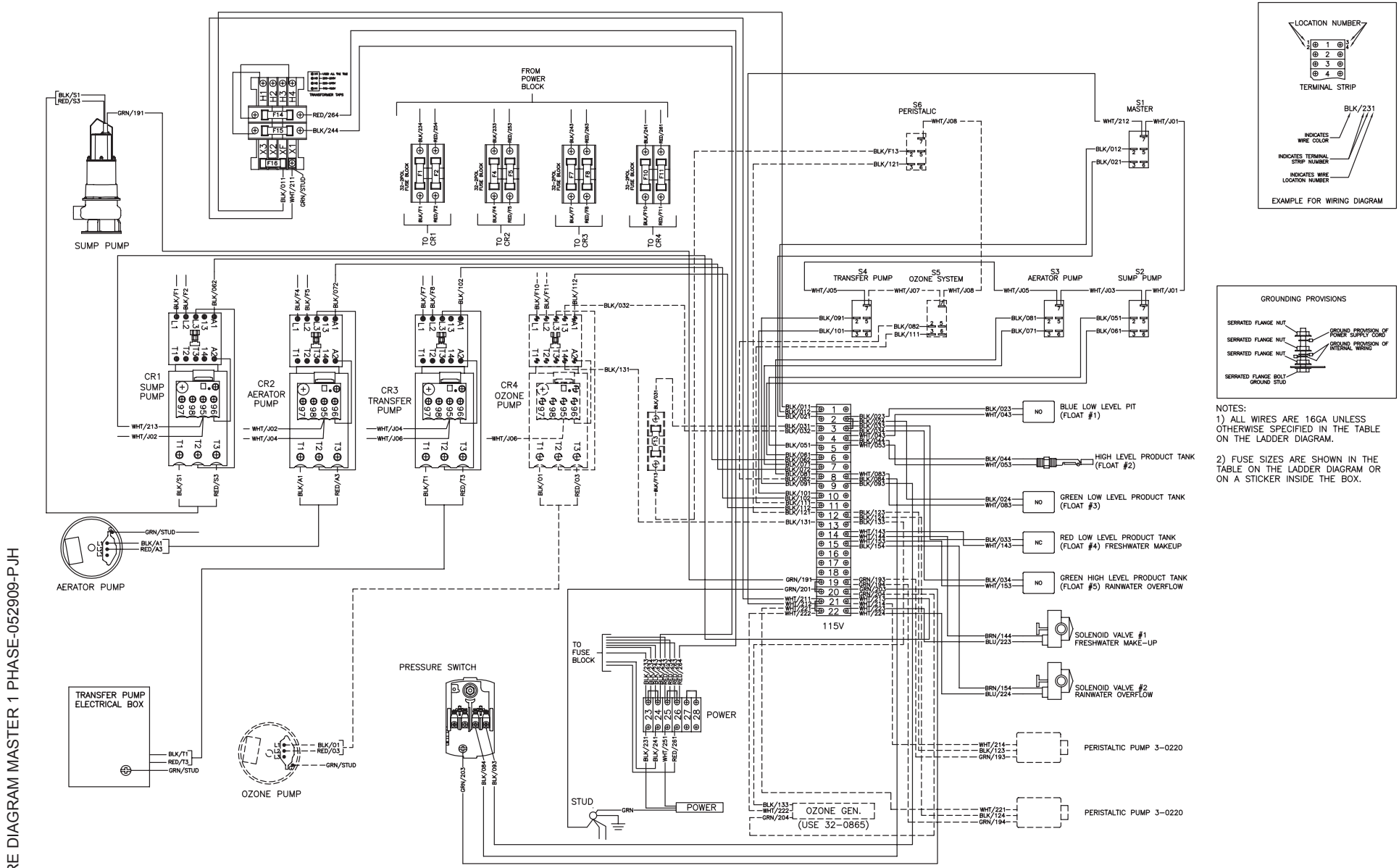
- CR1 = CONTROL RELAY, SUMP PUMP
- CR2 = CONTROL RELAY, AERATOR PUMP
- CR3 = CONTROL RELAY, TRANSFER PUMP
- CR4 = CONTROL RELAY, OZONE PUMP
- S1 = SWITCH, MASTER
- S2 = SWITCH, SUMP PUMP
- S3 = SWITCH, AERATOR PUMP
- S4 = SWITCH, TRANSFER PUMP
- S5 = SWITCH, OZONE SYSTEM
- S6 = SWITCH, PERISTALTIC METERING PUMP
- L1 = LIGHT, FOR S1
- L2 = LIGHT, FOR S2
- L3 = LIGHT, FOR S3
- L4 = LIGHT, FOR S4
- L5 = LIGHT, FOR S5
- L6 = LIGHT, FOR S6
- PS1 = PRESSURE SWITCH, 40-60 PSI (TRANSFER PUMP)
- FL1 = FLOAT, N.O. BLUE LOW LEVEL (SUMP PIT)
- FL2 = FLOAT, N.C. HIGH LEVEL (PRODUCT TANK)
- FL3 = FLOAT, N.O. GREEN LOW LEVEL (PRODUCT TANK)
- FL4 = FLOAT, N.C. RED LOW LEVEL FRESH WATER MAKEUP
- FL5 = FLOAT, N.O. GREEN HIGH LEVEL RAINWATER OVERFLOW
- SV1 = SOLENOID VALVE, FRESH WATER MAKEUP
- SV2 = SOLENOID VALVE, RAINWATER OVERFLOW

115V 1Ø LADDER DIAGRAM



LADDER DIAGRAM MASTER 1 PHASE -052909-PJH

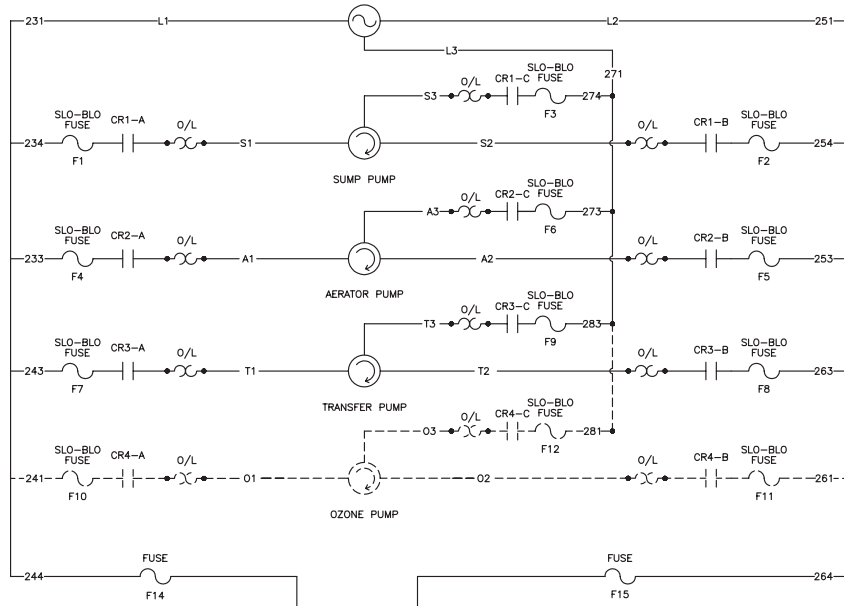
ELECTRICAL DIAGRAM (SINGLE PHASE)



WIRE DIAGRAM MASTER 1 PHASE-052909-P-JH

ELECTRICAL SCHEMATIC (THREE PHASE)

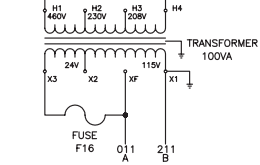
208-230/460V 3Ø LADDER DIAGRAM



NOTE:
LADDER DIAGRAM SHOWN WITH POWER TO UNIT AND
NO WATER IN PIT

LEGEND

- CR1 = CONTROL RELAY, SUMP PUMP
- CR2 = CONTROL RELAY, AERATOR PUMP
- CR3 = CONTROL RELAY, TRANSFER PUMP
- CR4 = CONTROL RELAY, OZONE PUMP
- S1 = SWITCH, MASTER
- S2 = SWITCH, SUMP PUMP
- S3 = SWITCH, AERATOR PUMP
- S4 = SWITCH, TRANSFER PUMP
- S5 = SWITCH, OZONE SYSTEM
- S6 = SWITCH, PERISTALTIC PUMP
- L1 = LIGHT, FOR S1
- L2 = LIGHT, FOR S2
- L3 = LIGHT, FOR S3
- L4 = LIGHT, FOR S4
- L5 = LIGHT, FOR S5
- L6 = LIGHT, FOR S6
- PS1 = PRESSURE SWITCH, 40-60 PSI (TRANSFER PUMP)
- FL1 = FLOAT, N.O. BLUE LOW LEVEL (SUMP PIT)
- FL2 = FLOAT, N.C. HIGH LEVEL (PRODUCT TANK)
- FL3 = FLOAT, N.O. GREEN LOW LEVEL (PRODUCT TANK)
- FL4 = FLOAT, N.C. RED HIGH LEVEL FRESH WATER MAKEUP
- FL5 = FLOAT, N.O. GREEN HIGH LEVEL RAINWATER OVERFLOW
- SV1 = SOLENOID VALVE, FRESH WATER MAKEUP
- SV2 = SOLENOID VALVE, RAINWATER OVERFLOW



TRANSFORMER FUSE CHART				
VOLTAGE	PHASE	PRIMARY FUSES	SECONDARY FUSE	
208	3	1.0 KLDLR	1.0 FLA	
230	3	1.0 KLDLR	1.0 FLA	
460	3	0.5 KLDLR	1.0 FLA	

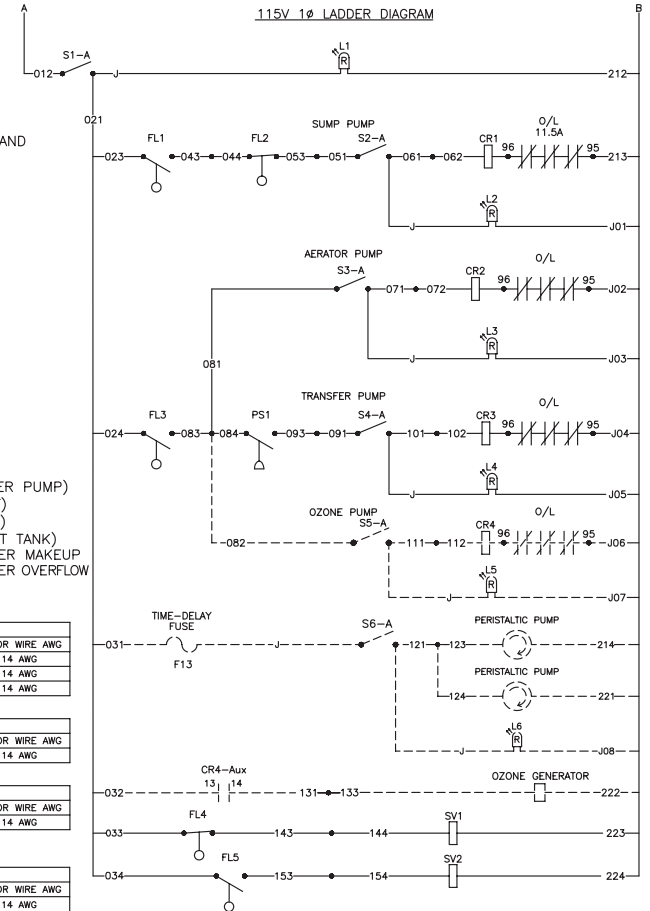
SUMP PUMP								
OL SETTING	OVERLOAD (AMPS)	VOLTAGE	PHASE	PUMP	AMPS	HP	FUSE	MOTOR WIRE AWG
3.75	2.9-4	208	3	3-0325	3	0.5	32-1024	14 AWG
3.75	2.9-4	230	3	3-0325	3	0.5	32-1024	14 AWG
1.6	1.1-1.6	460	3	3-0326	1.28	1.5	32-0741	14 AWG

AERATION PUMP								
OL SETTING	OVERLOAD (AMPS)	VOLTAGE	PHASE	PUMP	AMPS	HP	FUSE	MOTOR WIRE AWG
5.88	4.5-6.3	208, 230/460	3	3-0319	4.7	1.5	32-1025	14 AWG

TRANSFER PUMP								
OL SETTING	OVERLOAD (AMPS)	VOLTAGE	PHASE	PUMP	AMPS	HP	FUSE	MOTOR WIRE AWG
6.25	4.5-6.3	208, 230/460	3	3-0324	6	2	32-1025	14 AWG

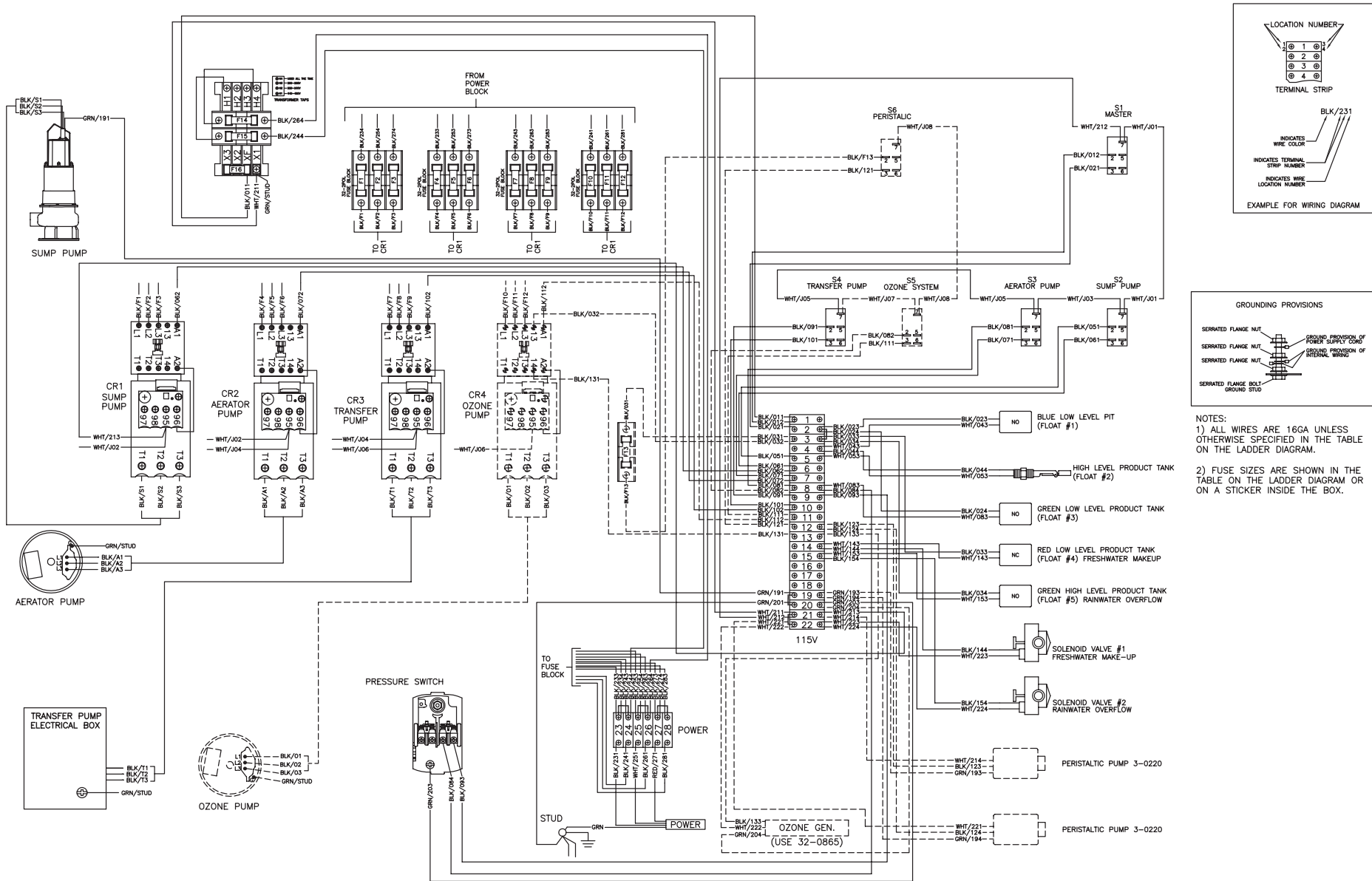
OZONE PUMP								
OL SETTING	OVERLOAD (AMPS)	VOLTAGE	PHASE	PUMP	AMPS	HP	FUSE	MOTOR WIRE AWG
2.88	2.3-3.2	208, 230/460	3	3-0323	2.3	0.5	32-0470	14 AWG

115V 1Ø LADDER DIAGRAM



LADDER DIAGRAM MASTER 3 PHASE -052109-PJH

ELECTRICAL DIAGRAM (THREE PHASE)



WIRE DIAGRAM MASTER 3 PHASE-052109-P JH

Manufactured by Mi-T-M
8650 Enterprise Drive, Peosta IA 52068
563-556-7484/ Fax 563-556-1235