



PARTS LIST FOR
CA-2403-1MMH
CA-2403-1MMS
(AFTER SERIAL #10863746)

ENGINE OIL GRADE:	SAE10W-30
ENGINE OIL CAPACITY:	20 oz.
PUMP OIL GRADE:	Mi-T-M PUMP OIL #AW-4085-0016
PUMP OIL CAPACITY:	14 oz.
NOZZLE SIZE:	3.0

This Parts Listing has been compiled for your benefit. You can be assured your Mi-T-M Cold Water Pressure Washer was constructed and designed with quality and performance in mind using over 25 years experience in the pressure washer business. Each component has been rigorously tested to insure the highest level of acceptance.

The contents of this Parts Listing are based on the latest product information available at the time of publication. Mi-T-M reserves the right to make changes in price, color, materials, equipment, specifications or models at any time without notice.

WARNING

THIS IS A PROFESSIONAL HIGH PRESSURE, COLD WATER PRESSURE WASHER. CAUTION SHOULD BE OBSERVED WHEN USING OR REPAIRING THIS UNIT! READ AND FOLLOW THE SAFETY WARNINGS LISTED BELOW BEFORE ATTEMPTING ANY REPAIRS ON THIS PRESSURE WASHER!

SAFETY WARNINGS

1. NEVER alter or modify the equipment. Be sure any accessory items and system components being used will withstand the pressure developed. Use only genuine Mi-T-M parts for repair of your pressure washer. Failure to do so can cause hazardous operating conditions and will VOID warranty.
2. NEVER make adjustments on machinery while the unit is connected to the engine without first removing the ignition cable from the spark plug. Turning over the machinery by hand during adjustment or cleaning might start the engine and machinery with it, causing serious injury to the operator.
3. Know how to stop and bleed pressures quickly. Be thoroughly familiar with controls.
4. Before servicing the unit, turn unit off, relieve the water pressure and allow the unit to cool down. Do not make repairs while the unit is running. Service in a clean, dry, flat area. Block the wheels to prevent the unit from moving. Be especially careful to properly dispose of any flammable materials.
5. After testing the machine, DO NOT leave the pressurized unit unattended. Shut off the unit and release trapped pressure before leaving.

Table of Contents

SPECIFICATIONS	3
NOTES	4
NOTES	5
FRAME ASSEMBLY FOR CA-2403-1MMH_1MMS (AFTER SERIAL #10863746)	6
PUMP ASSEMBLY (3-0415)	8
UNLOADER ASSEMBLY (8-0630)	10

SPECIFICATIONS

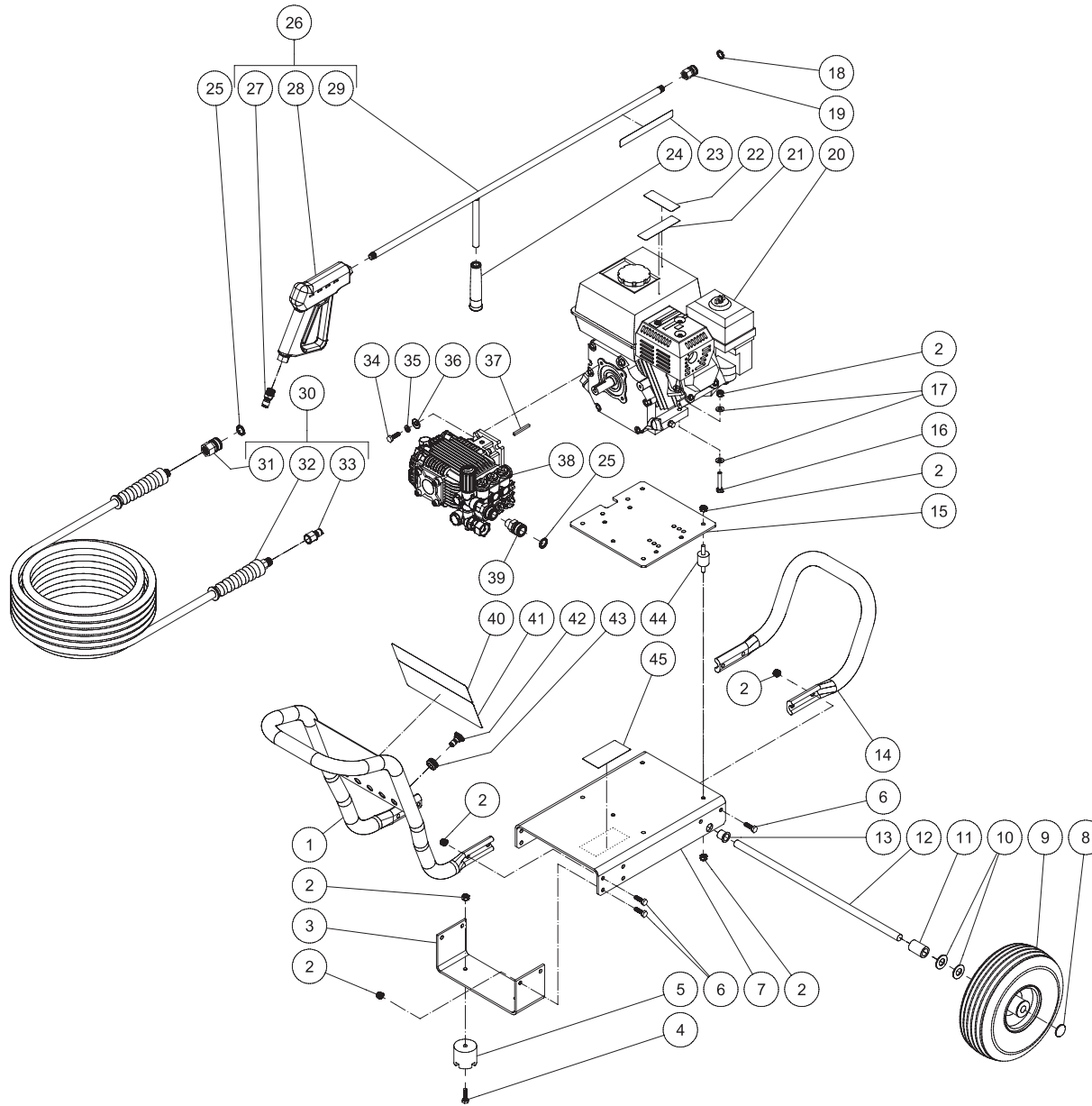
MODEL NUMBER	CA-2403-1MMH	CA-2403-1MMS
Operating Pressure (PSI/Bar):	2400/165.5	
High Pressure Nozzle:	3.0	
Water Volume (GPM/lpm):	2.4/9	
Engine:	Honda	Subaru
Model	GX160	EX17
Engine Type	4 Stroke, Overhead Valve, Single Cylinder	
Oil Type	SAE10W-30	
Oil Capacity (oz./liters)	20/.6	24/.7
Low Oil Protection	Oil Alert™	Low Oil Shutdown
Fuel Type	Unleaded Gasoline 86 Octane Minimum	
Fuel Capacity (gallon/ liters)	.95/3.6	
Starting	Recoil	
Maximum No Load RPM	3600 (+/- 100) RPM	
Pump:	Direct Driven, Oil Bath, Triplex Piston	
Oil Type	Mi-T-M Pump Oil #AW-4085-0016	
Oil Capacity (oz./liters)	14/.4	
Plungers	Ceramic	
Manifold	Forged Brass	
Valves	Stainless Steel	
Unloader	Adjustable	
Thermal Relief Valve	Relieves heated water during unloader bypass stage	
Unit Net Weight (lbs/Kg)	76/34.5	
Unit Shipping Weight (lbs/Kg)	103/47	
Unit Net Dimension (in/cm)	39Lx20.5Wx24.5H/99Lx52Wx62H	
Unit Shipping Dimension (in/cm)	30.5Lx21.5Wx27H/77.5Lx55Wx68.5H	

NOTES

DATE	SERIAL #	REASON
06-02-15	#10863746	CHANGED PUMP FROM 3-0353 TO 3-0415

NOTES

FRAME ASSEMBLY FOR CA-2403-1MMH_1MMS (AFTER SERIAL #10863746)

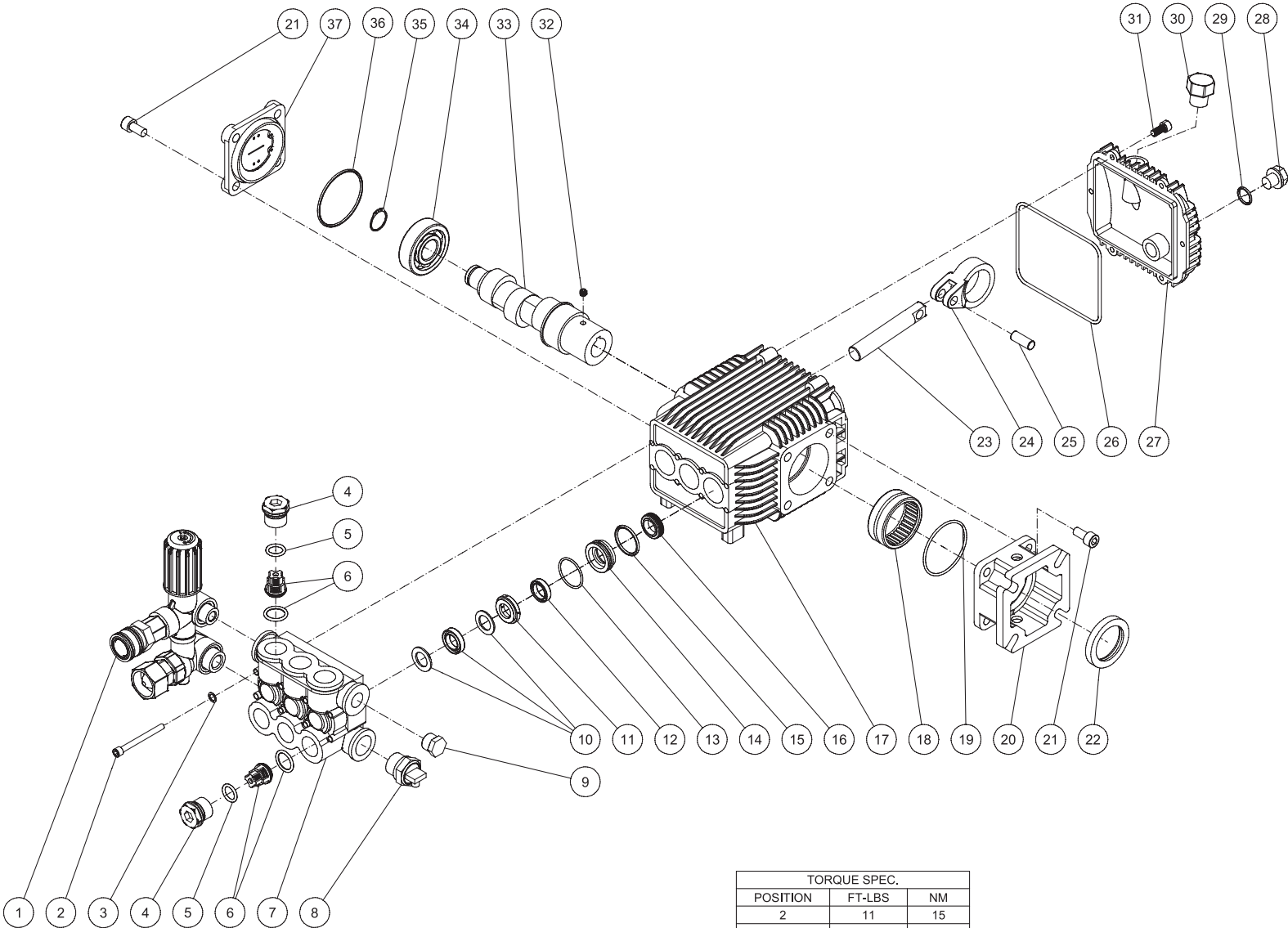


CA-2403-1MMH_1MMS 052115 JDK

FRAME ASSEMBLY

ITEM	DESCRIPTION	PART #	QTY	ITEM	DESCRIPTION	PART #	QTY
1	HANDLE	7-0182	1	25	O-RING	25-0123	2
2	LOCKNUT	30-0157	26	26	GUN/WAND ASSEMBLY	851-0095	1
3	BRACKET	56-0054	1	27	QUICK CONNECT	17-0005	1
4	BOLT	27-0068	2	28	GUN	16-0001	1
5	ISOLATOR	14-0008	2	29	WAND (INCLUDES GRIP & QUICK CONNECT)	16-0418	1
6	BOLT	27-0067	12	30	PRESSURE HOSE ASSEMBLY	851-0338	1
7	BASEPLATE	5-0206	1	31	QC SOCKET	17-0004	1
8	CAP	33-0018	2	32	HOSE	15-0209	1
9	WHEEL	14-0130	2	33	QUICK CONNECT	17-0006	1
10	WASHER	28-0008	4	34	BOLT	27-0092	4
11	SPACER	62-0176	2	35	LOCKWASHER	29-0007	4
12	AXLE	20-0518	1	36	WASHER	28-0022	4
13	BUSHING	62-0175	2	37	KEY	43-0073	1
14	HANDLE	7-0183	1	38	PUMP	3-0415	1
15	ISOLATION PLATE	56-0052	1	39	QUICK CONNECT SOCKET	17-0007	1
16	BOLT	27-0070	4	40	DECAL-PLACARD MITM 2400PSI	34-2766	1
17	WASHER	28-0003	8	41	DECAL - WARNING/CAUTION/OPERATION (SEE 71-0065)	N/A	1
18	O-RING	25-0122	1	42	NOZZLE 00030 QC	18-0387	1
19	QUICK CONNECT	17-0001	1	-	NOZZLE 15030 QC	18-0388	1
20	ENGINE (1MMH)	1-0088	1	-	NOZZLE 25030 QC	18-0390	1
-	ENGINE (1MMS)	1-0133	1	43	GROMMET	33-0001	5
21	DECAL - RISK OF BURNS (SEE 71-0065)	N/A	1	44	ISOLATOR	14-0096	4
22	DECAL - RISK OF FIRE (SEE 71-0065)	N/A	1	45	DECAL- SILVER STICKER	N/A	1
23	DECAL - RISK OF INJECTION (SEE 71-0065)	N/A	1	-	DECAL SET	71-0065	1
24	GRIP	7-0002	1				

PUMP ASSEMBLY (3-0415)



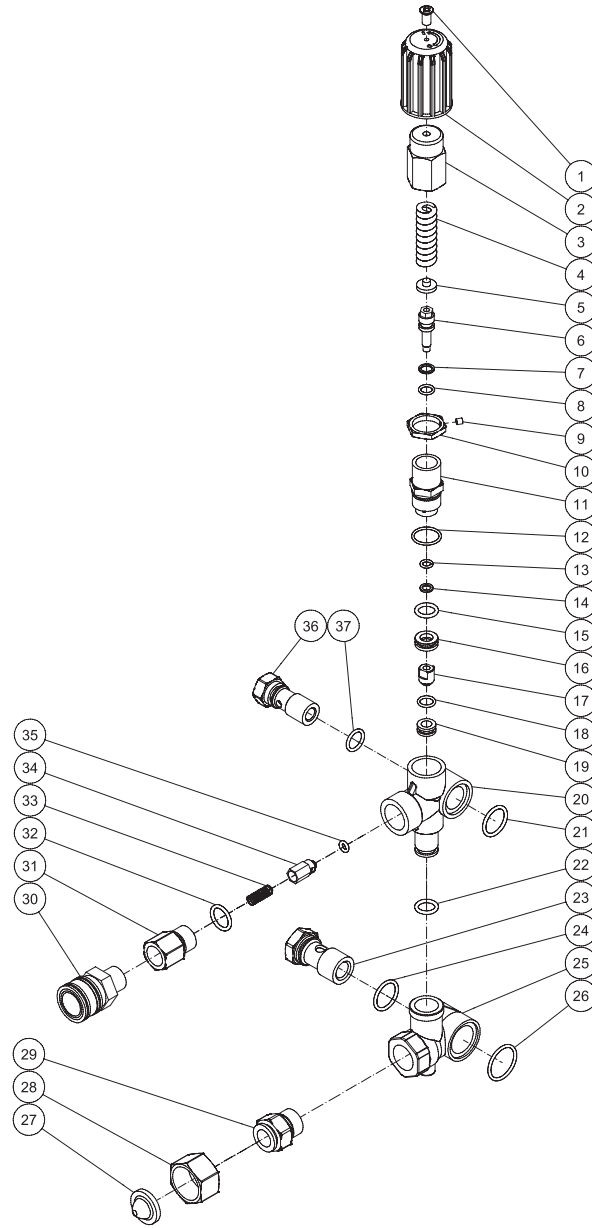
TORQUE SPEC.		
POSITION	FT-LBS	NM
2	11	15
4	59	80
21	18	24.4
30	7.4	10

3-0415 052115 JDK

3-0415 052115 JDK			
PUMP ASSEMBLY			
ITEM	DESCRIPTION	PART #	QTY
1	UNLOADER ASSY W/O CHEM INJ	8-0630	1
2	BOLT	27-0898	8
3	WASHER	28-0203	8
4	VALVE PLUG	39-0231	6
5	O-RING	25-0622	6
6	VALVE ASSEMBLY (SEE KIT 70-0502)	70-0502	6
7	MANIFOLD HEAD	46-1503	1
8	RELIEF VALVE	22-0005	1
9	PLUG	39-0102	1
10	HIGH PRESSURE PACKING (SEE KIT 70-0501)	SEE KIT	3
11	SEAL COMPACTION RING	46-1311	3
12	LOW PRESSURE SEAL (SEE KIT 70-0501)	SEE KIT	3
13	O-RING (SEE KIT 70-0501)	SEE KIT	3
14	RETAINER RING	46-1312	3
15	O-RING	25-0663	3
16	OIL SEAL	46-1313	3
17	CRANKCASE	N/A	1
18	NEEDLE BEARING	48-0096	1
19	O-RING	25-0603	1
20	FLANGE	46-1314	1
21	BOLT	27-8431	8
22	OIL SEAL	26-0320	1
23	PISTON - COATED	46-1504	3
24	CONNECTING ROD	46-1595	3
25	PISTON - PIN	46-1505	3
26	O-RING	25-0604	1
27	CRANKCASE COVER	46-1594	1
28	DRAIN PLUG	39-0376	1
29	O-RING	25-0606	1
30	OIL CAP	46-1593	1
31	BOLT	27-8401	6
32	SET SCREW	27-8886	1
33	CRANKSHAFT	N/A	1
34	BALL BEARING	48-0102	1
35	SNAP RING	46-1596	1
36	O-RING	25-0634	1
37	SIGHT GLASS ASSEMBLY	46-1597	1

KIT #	DESCRIPTION	ITEMS	# OF ASSEMBLIES	# OF CYLINDERS
70-0501	KITS - PACKINGS	10, 12, 13	3, 3, 3	3
70-0502	KITS - VALVES W/ O-RING	6	6	3

UNLOADER ASSEMBLY (8-0630)



UNLOADER ASSEMBLY			
ITEM	DESCRIPTION	PART #	QTY
1	SCREW (SEE KIT 70-0647)	27-2772	1
2	KNOB (SEE KIT 70-0647)	7-0250	1
3	KNOB (SEE KIT 70-0647)	SEE KIT	1
4	SPRING (SEE KIT 70-0647)	SEE KIT	1
5	SPRING SEAT (SEE KIT 70-0647)	SEE KIT	1
6	VALVE ROD (SEE KIT 70-0647)	SEE KIT	1
7	SUPPORT RING (SEE KIT 70-0647)	SEE KIT	1
8	O-RING (SEE KIT 70-0647)	25-0651	1
9	SET SCREW (SEE KIT 70-0647)	8-0479	1
10	JAM NUT (SEE KIT 70-0647)	SEE KIT	1
11	VALVE BODY (SEE KIT 70-0647)	SEE KIT	1
12	O-RING (SEE KIT 70-0647)	25-0652	1
13	O-RING (SEE KIT 70-0647)	25-0163	1
14	SUPPORT RING (SEE KIT 70-0647)	SEE KIT	1
15	O-RING (SEE KIT 70-0647)	25-0655	1
16	BY PASS JET UNLOADER (SEE KIT 70-0647)	SEE KIT	1
17	BULLET (SEE KIT 70-0647)	SEE KIT	1
18	O-RING (SEE KIT 70-0647)	25-0656	1
19	VALVE SEAT (SEE KIT 70-0647)	SEE KIT	1
20	VALVE HOUSING	SEE KIT	1
21	O-RING	25-0664	1
22	O-RING	25-0684	1
23	INLET BANJO BOLT	8-0595	1
24	O-RING	25-0602	1
25	BY PASS HOUSING	SEE KIT	1
26	O-RING	25-0654	1
27	FILTER (SEE KIT 23-0095)	19-0001	1
28	SWIVEL NUT (SEE KIT 23-0095)	SEE KIT	1
29	INLET CONNECTOR (SEE KIT 23-0095)	SEE KIT	1
30	QUICK CONNECT SOCKET	17-0007	1
31	OUTLET CONNECTOR	46-1389	1
32	O-RING	25-0386	1
33	SPRING (SEE KIT 70-0500)	SEE KIT	1
34	CHECKING VALVE (SEE KIT 70-0500)	SEE KIT	1
35	O-RING (SEE KIT 70-0500)	25-0653	1
36	OUTLET BANJO BOLT	8-0594	1
37	O-RING	25-0169	1

REPLACEMENT KITS			
KIT #	DESCRIPTION	ITEMS	# OF ASSEMBLIES
23-0095	KIT - GARDEN HOSE INLET ASSY	27-29	1
70-0500	KIT - NON-RETURN VALVES	33-35	1
70-0647	KIT - UNLOADER REBUILD	1-19	1

Manufactured by Mi-T-M
50 Mi-T-M Drive, Peosta IA 52068
563-556-7484/ Fax 563-556-1235