



PARTS LIST FOR  
***CA-2703-1MMH***  
***CA-2703-1MMK***  
***CA-2703-1MMS***  
(AFTER SERIAL #10863746)

ENGINE OIL GRADE:	SAE10W-30
ENGINE OIL CAPACITY:	20 oz.
PUMP OIL GRADE:	Mi-T-M PUMP OIL #AW-4085-0016
PUMP OIL CAPACITY:	14 oz.
NOZZLE SIZE:	3.0

This Parts Listing has been compiled for your benefit. You can be assured your Mi-T-M Cold Water Pressure Washer was constructed and designed with quality and performance in mind using over 25 years experience in the pressure washer business. Each component has been rigorously tested to insure the highest level of acceptance.

The contents of this Parts Listing are based on the latest product information available at the time of publication. Mi-T-M reserves the right to make changes in price, color, materials, equipment, specifications or models at any time without notice.

**WARNING**

THIS IS A PROFESSIONAL HIGH PRESSURE, COLD WATER PRESSURE WASHER. CAUTION SHOULD BE OBSERVED WHEN USING OR REPAIRING THIS UNIT! READ AND FOLLOW THE SAFETY WARNINGS LISTED BELOW BEFORE ATTEMPTING ANY REPAIRS ON THIS PRESSURE WASHER!

**SAFETY WARNINGS**

1. NEVER alter or modify the equipment. Be sure any accessory items and system components being used will withstand the pressure developed. Use only genuine Mi-T-M parts for repair of your pressure washer. Failure to do so can cause hazardous operating conditions and will VOID warranty.
2. NEVER make adjustments on machinery while the unit is connected to the engine without first removing the ignition cable from the spark plug. Turning over the machinery by hand during adjustment or cleaning might start the engine and machinery with it, causing serious injury to the operator.
3. Know how to stop and bleed pressures quickly. Be thoroughly familiar with controls.
4. Before servicing the unit, turn unit off, relieve the water pressure and allow the unit to cool down. Do not make repairs while the unit is running. Service in a clean, dry, flat area. Block the wheels to prevent the unit from moving. Be especially careful to properly dispose of any flammable materials.
5. After testing the machine, DO NOT leave the pressurized unit unattended. Shut off the unit and release trapped pressure before leaving.

**Table of Contents**

<b>SPECIFICATIONS</b> .....	<b>3</b>
<b>NOTES</b> .....	<b>4</b>
<b>NOTES</b> .....	<b>5</b>
<b>FRAME ASSEMBLY FOR CA-2703-1MMH_1MMK_1MMS (AFTER SERIAL #10863746)</b> .....	<b>6</b>
<b>PUMP ASSEMBLY (3-0415)</b> .....	<b>8</b>
<b>UNLOADER ASSEMBLY (8-0630)</b> .....	<b>10</b>

## SPECIFICATIONS

MODEL NUMBER	CA-2703-1MMH	CA-2703-1MMK	CA-2703-1MMS
Operating Pressure (PSI/Bar):	2700/186		
High Pressure Nozzle:	3.0		
Water Volume (GPM/lpm):	2.4/9		
Engine:	Honda	Kohler	Subaru
Model	GX200	CH270	EX21
Engine Type	4 Stroke, Overhead Valve, Single Cylinder		4 Stroke, Overhead Cam, Single Cylinder
Oil Type	SAE10W-30		
Oil Capacity (oz./liters)	20/.6		
Low Oil Protection	Oil Alert™	Low Oil Shutdown	
Fuel Type	Unleaded Gasoline 86 Octane Minimum		
Fuel Capacity (gallon/ liters)	.95/3.6		
Starting	Recoil		
Maximum No Load RPM	3600 (+/- 100) RPM		
Pump:	Direct Driven, Oil Bath, Triplex Piston		
Oil Type	Mi-T-M Pump Oil #AW-4085-0016		
Oil Capacity (oz./liters)	14/.4		
Plungers	Ceramic		
Manifold	Forged Brass		
Valves	Stainless Steel		
Unloader	Adjustable		
Thermal Relief Valve	Relieves heated water during unloader bypass stage		
Unit Net Weight (lbs/Kg)	76/34.5		
Unit Shipping Weight (lbs/Kg)	103/47		
Unit Net Dimension (in/cm)	39Lx20.5Wx24.5H/99Lx52Wx62H		

---

**NOTES**

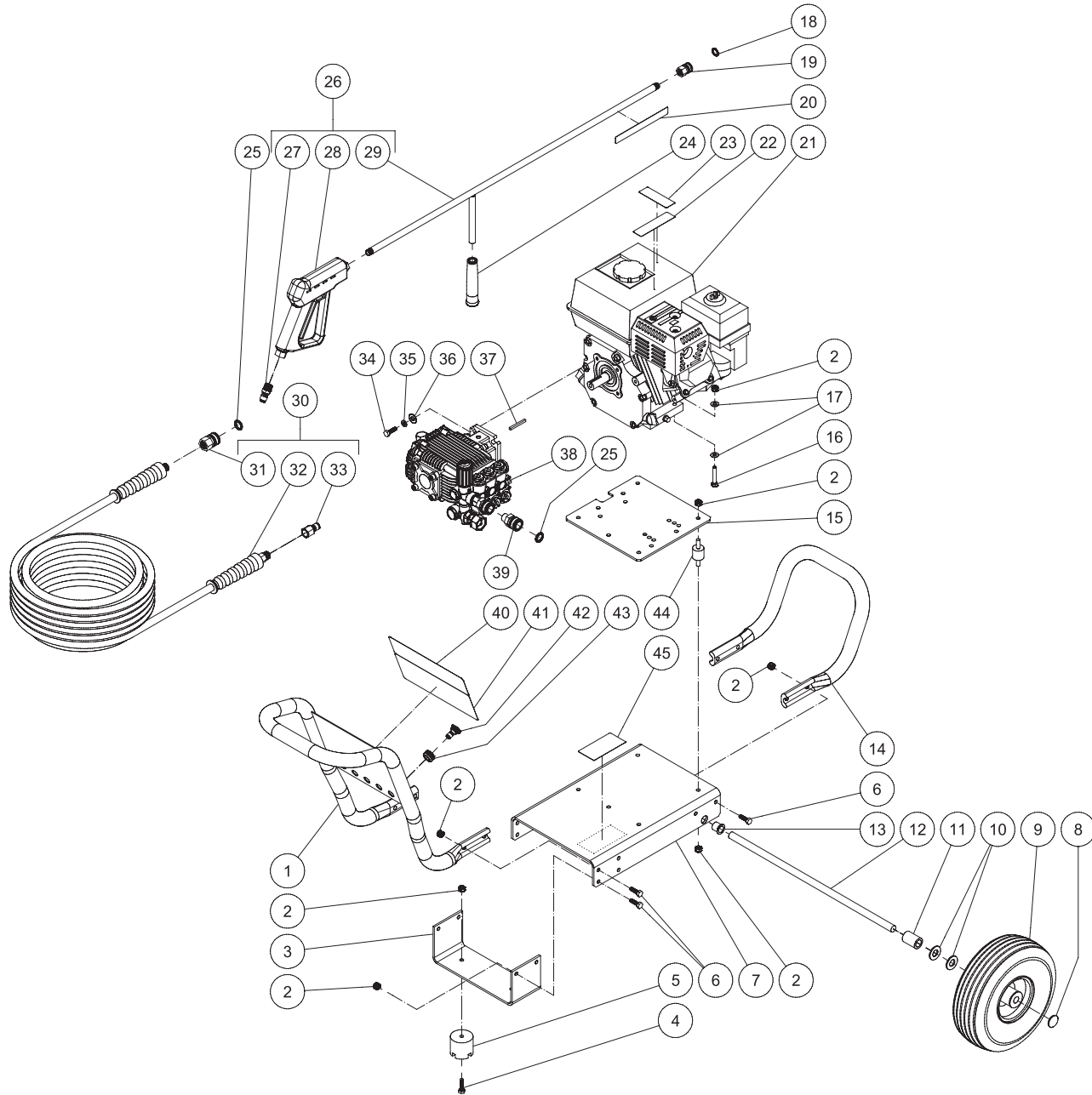
---

<b>DATE</b>	<b>SERIAL NUMBER BREAK</b>	<b>REASON FOR CHANGE</b>
06-02-15	#10863746	REPLACED PUMP 3-0353 WITH PUMP 3-0415

---

**NOTES**

# FRAME ASSEMBLY FOR CA-2703-1MMH\_1MMK\_1MMS (AFTER SERIAL #10863746)

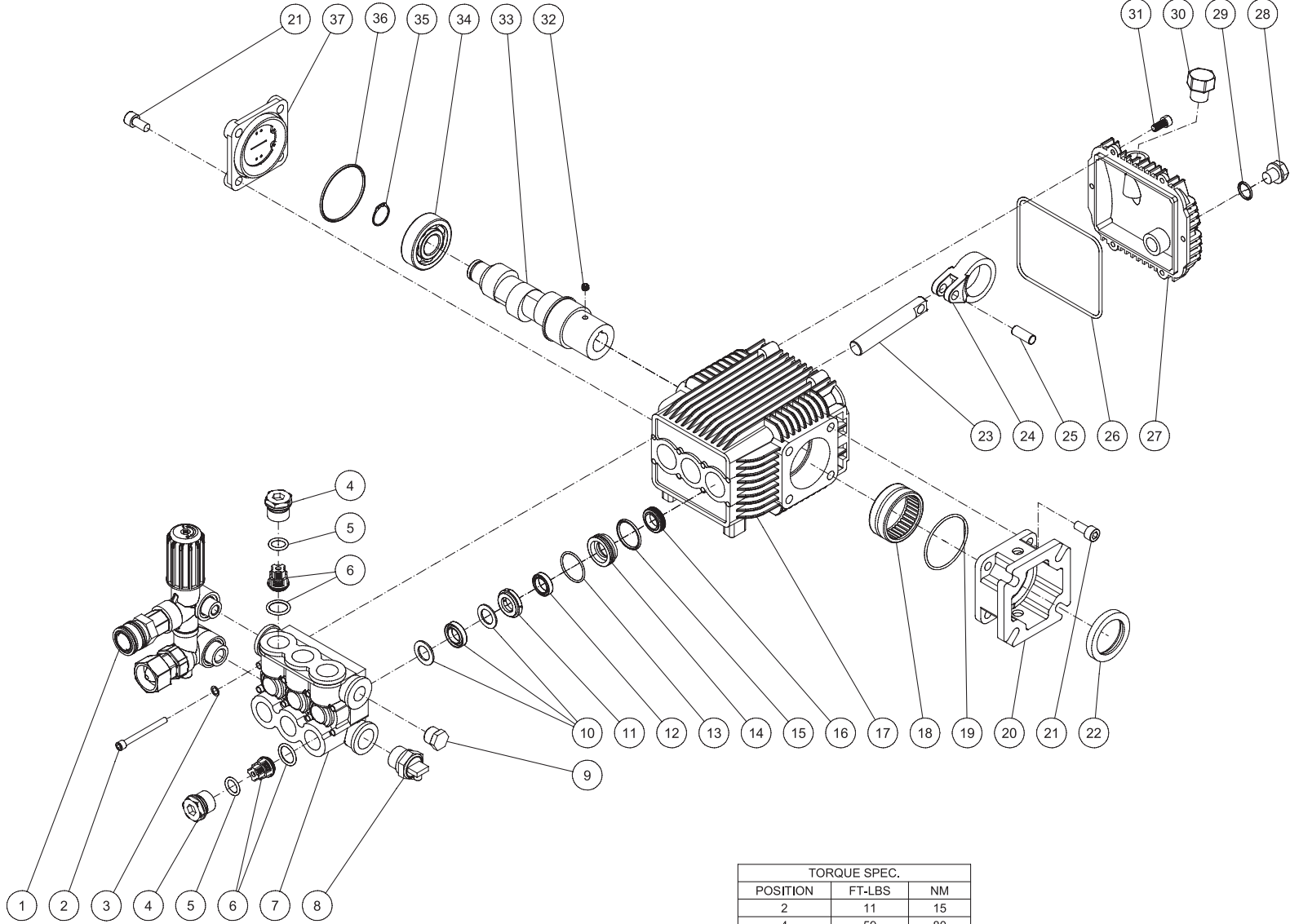


CA-2703-1MMH\_K\_S 052015 JDK

## FRAME ASSEMBLY

ITEM	DESCRIPTION	PART #	QTY	ITEM	DESCRIPTION	PART #	QTY
1	HANDLE	7-0182	1	24	GRIP	7-0002	1
2	LOCKNUT	30-0157	26	25	O-RING	25-0123	2
3	BRACKET	56-0054	1	26	GUN/WAND ASSEMBLY	851-0095	1
4	BOLT	27-0068	2	27	QUICK CONNECT	17-0005	1
5	ISOLATOR	14-0008	2	28	GUN	16-0001	1
6	BOLT	27-0067	12	29	WAND (INCLUDES GRIP & QUICK CONNECT)	16-0418	1
7	BASEPLATE	5-0206	1	30	PRESSURE HOSE ASSEMBLY	851-0338	1
8	CAP	33-0018	2	31	QC SOCKET	17-0004	1
9	WHEEL	14-0130	2	32	HOSE	15-0209	1
10	WASHER	28-0008	4	33	QUICK CONNECT	17-0006	1
11	SPACER	62-0176	2	34	BOLT	27-0092	4
12	AXLE	20-0518	1	35	LOCKWASHER	29-0007	4
13	BUSHING	62-0175	2	36	WASHER	28-0022	4
14	HANDLE	7-0183	1	37	KEY	43-0073	1
15	ISOLATION PLATE	56-0052	1	38	PUMP	3-0415	1
16	BOLT	27-0070	4	39	QUICK CONNECT SOCKET	17-0007	1
17	WASHER	28-0003	8	40	DECAL-PLACARD MITM 2700PSI	34-2768	1
18	O-RING	25-0122	1	41	DECAL - WARNING/CAUTION/OPERATION (SEE 71-0065)	N/A	1
19	QUICK CONNECT	17-0001	1	42	NOZZLE 00030 QC	18-0387	1
20	DECAL - RISK OF INJECTION (SEE 71-0065)	N/A	1	-	NOZZLE 15030 QC	18-0388	1
21	ENGINE - HONDA	1-0088	1	-	NOZZLE 25030 QC	18-0390	1
-	ENGINE - SUBARU	1-0133	1	43	GROMMET	33-0001	5
-	ENGINE - KOHLER	1-0206	1	44	ISOLATOR	14-0096	4
22	DECAL - RISK OF BURNS (SEE 71-0065)	N/A	1	45	DECAL- SILVER STICKER	N/A	1
23	DECAL - RISK OF FIRE (SEE 71-0065)	N/A	1	-	DECAL SET/COLD WATER GAS	71-0065	1

# PUMP ASSEMBLY (3-0415)



TORQUE SPEC.		
POSITION	FT-LBS	NM
2	11	15
4	59	80
21	18	24.4
30	7.4	10

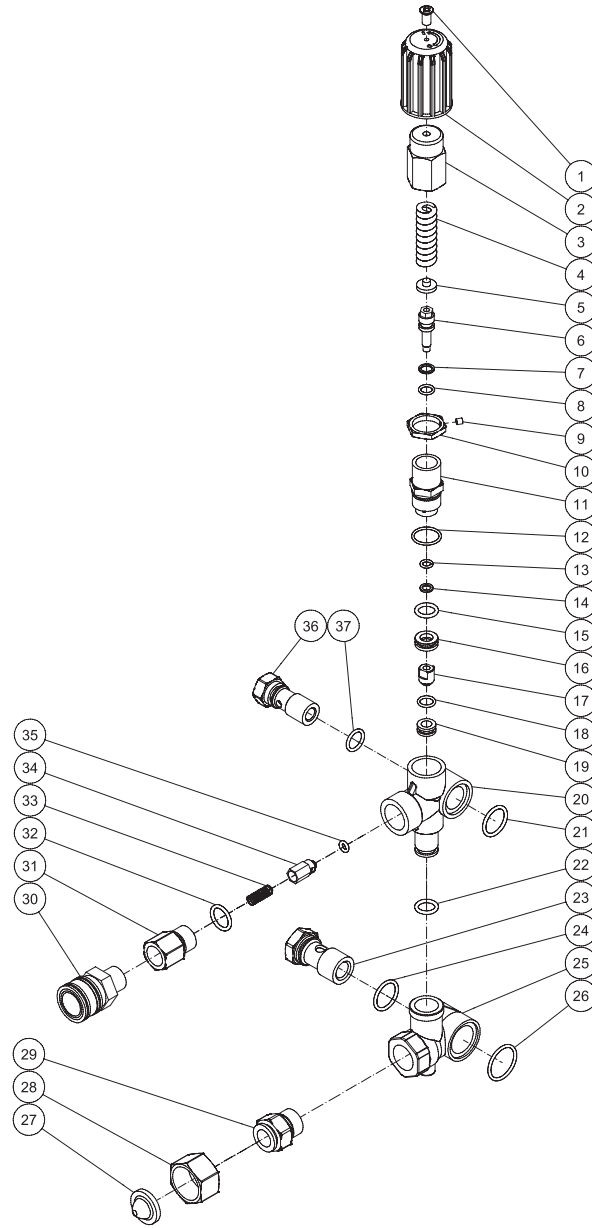
3-0415 052115 JDK



3-0415 052115 JDK			
PUMP ASSEMBLY			
ITEM	DESCRIPTION	PART #	QTY
1	UNLOADER ASSY W/O CHEM INJ	8-0630	1
2	BOLT	27-0898	8
3	WASHER	28-0203	8
4	VALVE PLUG	39-0231	6
5	O-RING	25-0622	6
6	VALVE ASSEMBLY (SEE KIT 70-0502)	70-0502	6
7	MANIFOLD HEAD	46-1503	1
8	RELIEF VALVE	22-0005	1
9	PLUG	39-0102	1
10	HIGH PRESSURE PACKING (SEE KIT 70-0501)	SEE KIT	3
11	SEAL COMPACTION RING	46-1311	3
12	LOW PRESSURE SEAL (SEE KIT 70-0501)	SEE KIT	3
13	O-RING (SEE KIT 70-0501)	SEE KIT	3
14	RETAINER RING	46-1312	3
15	O-RING	25-0663	3
16	OIL SEAL	46-1313	3
17	CRANKCASE	N/A	1
18	NEEDLE BEARING	48-0096	1
19	O-RING	25-0603	1
20	FLANGE	46-1314	1
21	BOLT	27-8431	8
22	OIL SEAL	26-0320	1
23	PISTON - COATED	46-1504	3
24	CONNECTING ROD	46-1595	3
25	PISTON - PIN	46-1505	3
26	O-RING	25-0604	1
27	CRANKCASE COVER	46-1594	1
28	DRAIN PLUG	39-0376	1
29	O-RING	25-0606	1
30	OIL CAP	46-1593	1
31	BOLT	27-8401	6
32	SET SCREW	27-8886	1
33	CRANKSHAFT	N/A	1
34	BALL BEARING	48-0102	1
35	SNAP RING	46-1596	1
36	O-RING	25-0634	1
37	SIGHT GLASS ASSEMBLY	46-1597	1

KIT #	DESCRIPTION	ITEMS	# OF ASSEMBLIES	# OF CYLINDERS
70-0501	KITS - PACKINGS	10, 12, 13	3, 3, 3	3
70-0502	KITS - VALVES W/ O-RING	6	6	3

# UNLOADER ASSEMBLY (8-0630)



UNLOADER ASSEMBLY				
ITEM	DESCRIPTION		PART #	QTY
1	SCREW (SEE KIT 70-0647)		27-2772	1
2	KNOB (SEE KIT 70-0647)		7-0250	1
3	KNOB (SEE KIT 70-0647)		SEE KIT	1
4	SPRING (SEE KIT 70-0647)		SEE KIT	1
5	SPRING SEAT (SEE KIT 70-0647)		SEE KIT	1
6	VALVE ROD (SEE KIT 70-0647)		SEE KIT	1
7	SUPPORT RING (SEE KIT 70-0647)		SEE KIT	1
8	O-RING (SEE KIT 70-0647)		25-0651	1
9	SET SCREW (SEE KIT 70-0647)		8-0479	1
10	JAM NUT (SEE KIT 70-0647)		SEE KIT	1
11	VALVE BODY (SEE KIT 70-0647)		SEE KIT	1
12	O-RING (SEE KIT 70-0647)		25-0652	1
13	O-RING (SEE KIT 70-0647)		25-0163	1
14	SUPPORT RING (SEE KIT 70-0647)		SEE KIT	1
15	O-RING (SEE KIT 70-0647)		25-0655	1
16	BY PASS JET UNLOADER (SEE KIT 70-0647)		SEE KIT	1
17	BULLET (SEE KIT 70-0647)		SEE KIT	1
18	O-RING (SEE KIT 70-0647)		25-0656	1
19	VALVE SEAT (SEE KIT 70-0647)		SEE KIT	1
20	VALVE HOUSING		SEE KIT	1
21	O-RING		25-0664	1
22	O-RING		25-0684	1
23	INLET BANJO BOLT		8-0595	1
24	O-RING		25-0602	1
25	BY PASS HOUSING		SEE KIT	1
26	O-RING		25-0654	1
27	FILTER (SEE KIT 23-0095)		19-0001	1
28	SWIVEL NUT (SEE KIT 23-0095)		SEE KIT	1
29	INLET CONNECTOR (SEE KIT 23-0095)		SEE KIT	1
30	QUICK CONNECT SOCKET		17-0007	1
31	OUTLET CONNECTOR		46-1389	1
32	O-RING		25-0386	1
33	SPRING (SEE KIT 70-0500)		SEE KIT	1
34	CHECKING VALVE (SEE KIT 70-0500)		SEE KIT	1
35	O-RING (SEE KIT 70-0500)		25-0653	1
36	OUTLET BANJO BOLT		8-0594	1
37	O-RING		25-0169	1

REPLACEMENT KITS			
KIT #	DESCRIPTION	ITEMS	# OF ASSEMBLIES
23-0095	KIT - GARDEN HOSE INLET ASSY	27-29	1
70-0500	KIT - NON-RETURN VALVES	33-35	1
70-0647	KIT - UNLOADER REBUILD	1-19	1

Manufactured by Mi-T-M  
50 Mi-T-M Drive, Peosta IA 52068  
563-556-7484/ Fax 563-556-1235