



PARTS LIST FOR
CA-3504-1MAH
CA-3504-1MAS
(AFTER SERIAL #10754656)

Engine Oil Grade:	SAE 10W-30
Engine Oil Capacity:	Honda 37 oz. Subaru 40.5
Pump Oil Grade:	Mi-T-M Pump Oil #AW-4085-0016
Pump Oil Capacity:	18.5 oz.
Nozzle Size:	3.5

This Parts Listing has been compiled for your benefit. You can be assured your Mi-T-M Cold Water Pressure Washer was constructed and designed with quality and performance in mind using over 25 years experience in the pressure washer business. Each component has been rigorously tested to insure the highest level of acceptance.

The contents of this Parts Listing are based on the latest product information available at the time of publication. Mi-T-M reserves the right to make changes in price, color, materials, equipment, specifications or models at any time without notice.

WARNING

THIS IS A PROFESSIONAL HIGH PRESSURE, COLD WATER PRESSURE WASHER. CAUTION SHOULD BE OBSERVED WHEN USING OR REPAIRING THIS UNIT! READ AND FOLLOW THE SAFETY WARNINGS LISTED BELOW BEFORE ATTEMPTING ANY REPAIRS ON THIS PRESSURE WASHER!

SAFETY WARNINGS

1. NEVER alter or modify the equipment. Be sure any accessory items and system components being used will withstand the pressure developed. Use only genuine Mi-T-M parts for repair of your pressure washer. Failure to do so can cause hazardous operating conditions and will VOID warranty.
2. NEVER make adjustments on machinery while the unit is connected to the engine without first removing the ignition cable from the spark plug. Turning over the machinery by hand during adjustment or cleaning might start the engine and machinery with it, causing serious injury to the operator.
3. Know how to stop and bleed pressures quickly. Be thoroughly familiar with controls.
4. Before servicing the unit, turn unit off, relieve the water pressure and allow the unit to cool down. Do not make repairs while the unit is running. Service in a clean, dry, flat area. Block the wheels to prevent the unit from moving. Be especially careful to properly dispose of any flammable materials.
5. After testing the machine, DO NOT leave the pressurized unit unattended. Shut off the unit and release trapped pressure before leaving.

Table of Contents

SPECIFICATIONS..... 3
NOTES 4
FRAME ASSEMBLY FOR CA-3504-1MAH_1MAS (AFTER SERIAL #10754656) 6
PUMP ASSEMBLY (3-0310) 8
UNLOADER ASSEMBLY (8-0630) 10

SPECIFICATIONS

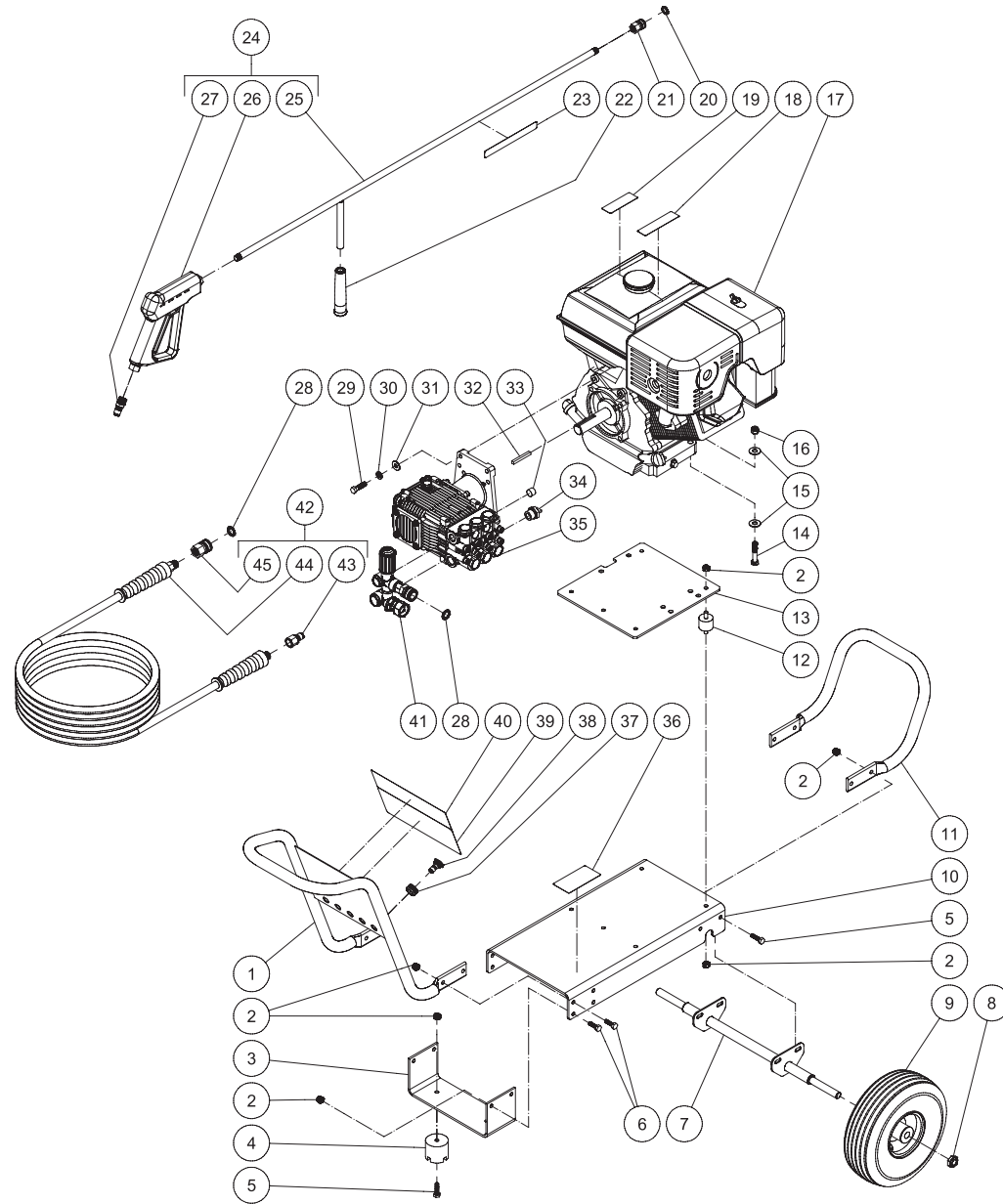
MODEL NUMBER	CA-3504-1MAH	CA-3504-1MAS
Operating Pressure (PSI/Bar):	3500/241.3	
High Pressure Nozzle:	3.5	
Water Volume (GPM/lpm):	3.3/12.5	
Engine:	Honda	Subaru
Model	GX390	EX40
Engine Type	4 Stroke, Overhead Valve, Single Cylinder	
Oil Type	SAE 10W-30	
Oil Capacity (oz./liters)	37/1.1	40.5/1.2
Low Oil Protection	Oil Alert™	Oil Sensor
Fuel Type	Unleaded Gasoline 86 Octane Minimum	
Fuel Capacity (gallon/ liters)	1.61/6.1	1.85/7.0
Starting	Recoil	
Maximum No Load RPM	3600 (+/- 100) RPM	
Pump:	Direct Driven, Oil Bath, Triplex Piston	
Oil Type	Mi-T-M Pump Oil #AW-4085-0016	
Oil Capacity (oz./liters)	18.5/.6	
Plungers	Ceramic	
Manifold	Forged Brass	
Valves	Stainless Steel	
Unloader	Adjustable	
Thermal Relief Valve	Relieves heated water during unloader bypass stage	
Unit Net Weight (lbs/Kg)	125/57	
Unit Shipping Weight (lbs/Kg)	175/79.5	
Unit Net Dimension (in/cm)	42.5Lx23.5Wx25H/108Lx60Wx63.5H	
Unit Shipping Dimension (in/cm)	39.5Hx25Wx31.5H/100.5Lx63.5Wx80H	

NOTES

DATE	SERIAL #	REASON FOR CHANGE
11/12/13	#10754656	CHANGED AXLE

NOTES

FRAME ASSEMBLY FOR CA-3504-1MAH_1MAS (AFTER SERIAL #10754656)

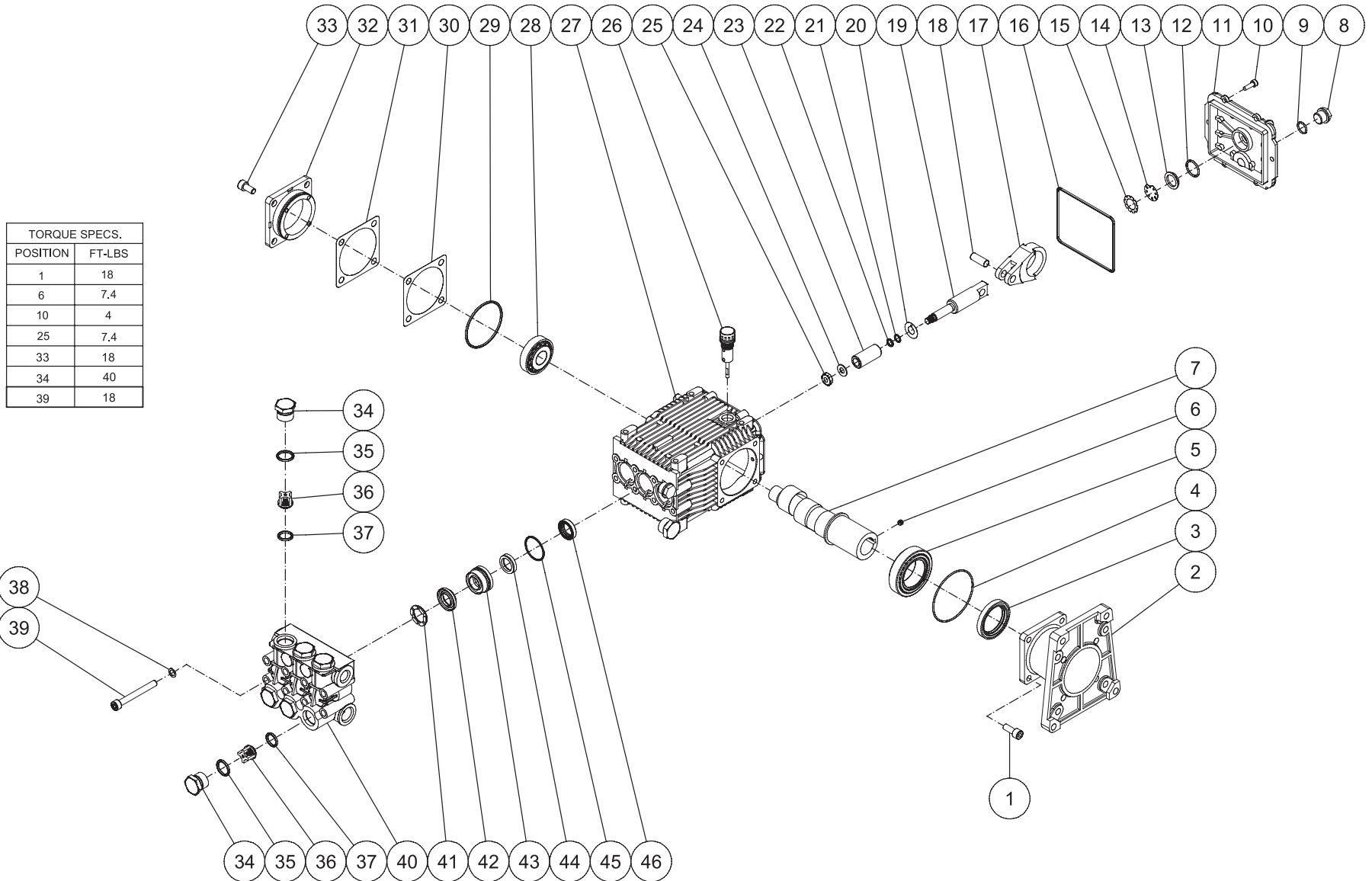


CA-3504-1MAH_1MAS 101613 CH

FRAME ASSEMBLY

ITEM	DESCRIPTION	PART #	QTY	ITEM	DESCRIPTION	PART #	QTY
1	HANDLE	7-0182	1	25	WAND (INC GRIP & QC)	16-0439	1
2	LOCKNUT	30-0157	22	26	GUN	16-0001	1
3	BRACKET	56-0054	1	27	QUICK CONNECT	17-0005	1
4	ISOLATOR	14-0008	2	28	O-RING	25-0123	2
5	BOLT	27-0068	6	29	BOLT	27-0118	4
6	BOLT	27-0067	8	30	LOCKWASHER	29-0008	4
7	AXLE	13-0230A53	1	31	WASHER	28-0022	4
8	LOCKNUT	30-0117	2	32	KEY	43-0078	1
9	WHEEL	14-0130	2	33	PLUG	23-0244	1
10	BASEPLATE	5-0207	1	34	RELIEF VALVE	22-0005	1
11	HANDLE	7-0183	1	35	PUMP	3-0310	1
12	ISOLATOR	14-0097	4	36	DECAL- SILVER STICKER	N/A	1
13	ISOLATION PLATE	56-0053	1	37	GROMMET	33-0001	5
14	BOLT	27-0121	4	38	NOZZLE	18-0392	1
15	WASHER	28-0023	8	-	NOZZLE	18-0393	1
16	LOCKNUT	30-0159	4	-	NOZZLE	18-0395	1
17	ENGINE - HONDA	1-0086	1	39	DECAL - WARNING/CAUTION/OPERATION (SEE 71-0065)	N/A	1
-	ENGINE - ROBIN	1-0176	1	40	DECAL	N/A	1
18	DECAL - RISK OF BURNS (SEE 71-0065)	N/A	1	41	UNLOADER ASSY WITHOUT CHEM INJ	8-0630	1
19	DECAL - RISK OF FIRE (SEE 71-0065)	N/A	1	42	PRESSURE HOSE ASSEMBLY (43-45)	851-0338	1
20	O-RING	25-0122	1	43	QUICK CONNECT	17-0006	1
21	QUICK CONNECT	17-0001	1	44	HOSE	15-0209	1
22	GRIP	7-0002	1	45	QC SOCKET	17-0004	1
23	DECAL - RISK OF INJECTION (SEE 71-0065)	N/A	1	-	DECAL SET	71-0065	1
24	GUN/WAND ASSEMBLY (25-27)	851-0371	1				

PUMP ASSEMBLY (3-0310)



3-03010-061913 JDK

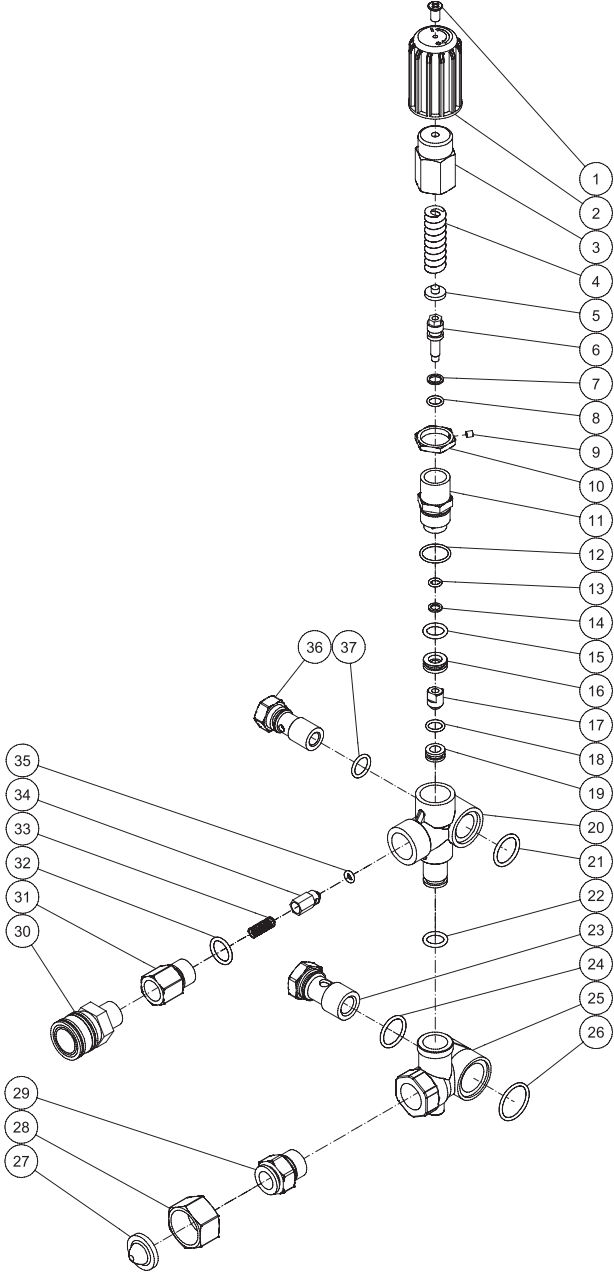
PUMP ASSEMBLY

ITEM	DESCRIPTION	PART #	QTY	ITEM	DESCRIPTION	PART #	QTY
1	SCREW	27-8432	4	25	NUT (SEE KIT 70-0352)	30-6020	3
2	PUMP FLANGE	46-0714	1	26	OIL DIPSTICK	39-0090	1
3	OIL SEAL (SEE KIT 70-0337)	26-0194	1	27	CRANKCASE	46-1198	1
4	O-RING (SEE KIT 70-0337)	25-0397	1	28	BEARING	48-0072	1
5	BEARING	48-0062	1	29	O-RING (SEE KIT 70-0337)	25-0380	1
6	SET SCREW	27-8886	1	30	SHIM	46-0705	(1-3)
7	CRANKSHAFT	46-0959	1	31	SHIM	46-0704	(1-3)
8	PLUG	39-0086	2	32	BEARING CAP/SUPPORT	46-0703	1
9	O-RING	25-0325	2	33	BOLT	27-8884	4
10	BOLT	27-8885	6	34	VALVE CAP	39-0095	6
11	CRANKCASE COVER	46-0719	1	35	O-RING	25-0160	6
12	O-RING	25-0370	1	36	VALVE (SEE KIT 70-0179)	SEE KIT	6
13	OIL SIGHT GLASS	46-0670	1	37	O-RING (SEE KIT 70-0179)	25-0386	6
14	OIL REFLECTOR	46-0824	1	38	LOCKWASHER	29-0154	8
15	SPRING RETAINER	46-0671	1	39	BOLT	27-8440	8
16	O-RING (SEE KIT 70-0337)	25-0398	1	40	MANIFOLD	46-1186	1
17	CONNECTING ROD	46-0922	3	41	SUPPORT RING (SEE KIT 70-0178)	46-0710	3
18	PISTON PIN	46-0698	3	42	V PACKING (SEE KIT 70-0177)	46-0709	3
19	PLUNGER ROD	46-0699	3	43	PACKING RETAINER	46-0708	3
20	SLINGER WASHER (SEE KIT 70-0352)	46-0700	3	44	LOW PRESSURE SEAL (SEE KIT 70-0177)	46-0707	3
21	O-RING (SEE KIT 70-0352)	25-0404	3	45	O-RING (SEE KIT 70-0177)	25-0384	3
22	O-RING (SEE KIT 70-0352)	25-0382	3	46	OIL SEAL (SEE KIT 70-0337)	46-0931	3
23	PISTON (SEE KIT 70-0352)	46-0701	3	47	O-RING	25-0372	1
24	WASHER/GASKET (SEE KIT 70-0352)	26-0191	3	48	PLUG	39-0088	1

REPLACEMENT KITS

KIT #	DESCRIPTION	ITEMS	# OF ASSEMBLIES	# OF CYLINDERS
70-0337	KIT - OIL SEALS	3,4,16,29,46	1,1,1,1,3	3
70-0352	KIT - PISTONS	20-25	3	3
70-0177	KIT - HIGH PRESSURE SEALS	42,44,45	3	3
70-0178	KIT - SUPPORT RINGS	41	3	3
70-0179	KIT-VALVES	36,37	6	3

UNLOADER ASSEMBLY (8-0630)



8-0630 122714 JDK

8-0630 122714 JDK			
UNLOADER ASSEMBLY			
ITEM	DESCRIPTION	PART #	QTY
1	SCREW (SEE KIT 70-0647)	27-2772	1
2	KNOB (SEE KIT 70-0647)	7-0250	1
3	KNOB (SEE KIT 70-0647)	SEE KIT	1
4	SPRING (SEE KIT 70-0647)	SEE KIT	1
5	SPRING SEAT (SEE KIT 70-0647)	SEE KIT	1
6	VALVE ROD (SEE KIT 70-0647)	SEE KIT	1
7	SUPPORT RING (SEE KIT 70-0647)	SEE KIT	1
8	O-RING (SEE KIT 70-0647)	25-0651	1
9	SET SCREW (SEE KIT 70-0647)	8-0479	1
10	JAM NUT (SEE KIT 70-0647)	SEE KIT	1
11	VALVE BODY (SEE KIT 70-0647)	SEE KIT	1
12	O-RING (SEE KIT 70-0647)	25-0652	1
13	O-RING (SEE KIT 70-0647)	25-0163	1
14	SUPPORT RING (SEE KIT 70-0647)	SEE KIT	1
15	O-RING (SEE KIT 70-0647)	25-0655	1
16	BY PASS JET UNLOADER (SEE KIT 70-0647)	SEE KIT	1
17	BULLET (SEE KIT 70-0647)	SEE KIT	1
18	O-RING (SEE KIT 70-0647)	25-0656	1
19	VALVE SEAT (SEE KIT 70-0647)	SEE KIT	1
20	VALVE HOUSING	SEE KIT	1
21	O-RING	25-0664	1
22	O-RING	25-0684	1
23	INLET BANJO BOLT	8-0595	1
24	O-RING	25-0602	1
25	BY PASS HOUSING	SEE KIT	1
26	O-RING	25-0654	1
27	FILTER (SEE KIT 23-0095)	19-0001	1
28	SWIVEL NUT (SEE KIT 23-0095)	SEE KIT	1
29	INLET CONNECTOR (SEE KIT 23-0095)	SEE KIT	1
30	QUICK CONNECT SOCKET	17-0007	1
31	OUTLET CONNECTOR	46-1389	1
32	O-RING	25-0386	1
33	SPRING (SEE KIT 70-0500)	SEE KIT	1
34	CHECKING VALVE (SEE KIT 70-0500)	SEE KIT	1
35	O-RING (SEE KIT 70-0500)	25-0653	1
36	OUTLET BANJO BOLT	8-0594	1
37	O-RING	25-0169	1

REPLACEMENT KITS			
KIT #	DESCRIPTION	ITEMS	# OF ASSEMBLIES
23-0095	KIT - GARDEN HOSE INLET ASSY	27-29	1
70-0500	KIT - NON-RETURN VALVES	33-35	1
70-0647	KIT - UNLOADER REBUILD	1-19	1

Manufactured by Mi-T-M
8650 Enterprise Drive, Peosta IA 52068
563-556-7484/ Fax 563-556-1235