



PARTS LIST FOR
CA-4004-1MAH
CA-4004-1MAK
CA-4004-1MAS
(after serial #10754656)

Engine Oil Grade:	SAE10W-30
Engine Oil Capacity:	Honda 37 oz. Kohler 44 oz. Subaru 40.5 oz.
Pump Oil Grade:	SAE20 or 30 Non-Detergent
Pump Oil Capacity:	18.5 oz.
Nozzle Size:	3.5

This Parts Listing has been compiled for your benefit. You can be assured your Mi-T-M Cold Water Pressure Washer was constructed and designed with quality and performance in mind using over 25 years experience in the pressure washer business. Each component has been rigorously tested to insure the highest level of acceptance.

The contents of this Parts Listing are based on the latest product information available at the time of publication. Mi-T-M reserves the right to make changes in price, color, materials, equipment, specifications or models at any time without notice.

WARNING

THIS IS A PROFESSIONAL HIGH PRESSURE, COLD WATER PRESSURE WASHER. CAUTION SHOULD BE OBSERVED WHEN USING OR REPAIRING THIS UNIT! READ AND FOLLOW THE SAFETY WARNINGS LISTED BELOW BEFORE ATTEMPTING ANY REPAIRS ON THIS PRESSURE WASHER!

SAFETY WARNINGS

1. NEVER alter or modify the equipment. Be sure any accessory items and system components being used will withstand the pressure developed. Use only genuine Mi-T-M parts for repair of your pressure washer. Failure to do so can cause hazardous operating conditions and will VOID warranty.
2. NEVER make adjustments on machinery while the unit is connected to the power source. Turning over the machinery by hand during adjustment or cleaning might start the machinery, causing serious injury to the operator.
3. Know how to stop and bleed pressures quickly. Be thoroughly familiar with controls.
4. Before servicing the unit, turn unit off, relieve the water pressure and allow the unit to cool down. Do not make repairs while the unit is running. Service in a clean, dry, flat area.
5. After testing the machine, DO NOT leave the pressurized unit unattended. Shut off the unit and release trapped pressure before leaving.

Table of Contents

SPECIFICATIONS	3
NOTES	4
FRAME ASSEMBLY (AFTER SERIAL #10754656)	6
PUMP ASSEMBLY (3-0310)	8
UNLOADER ASSEMBLY (8-0630)	10

SPECIFICATIONS

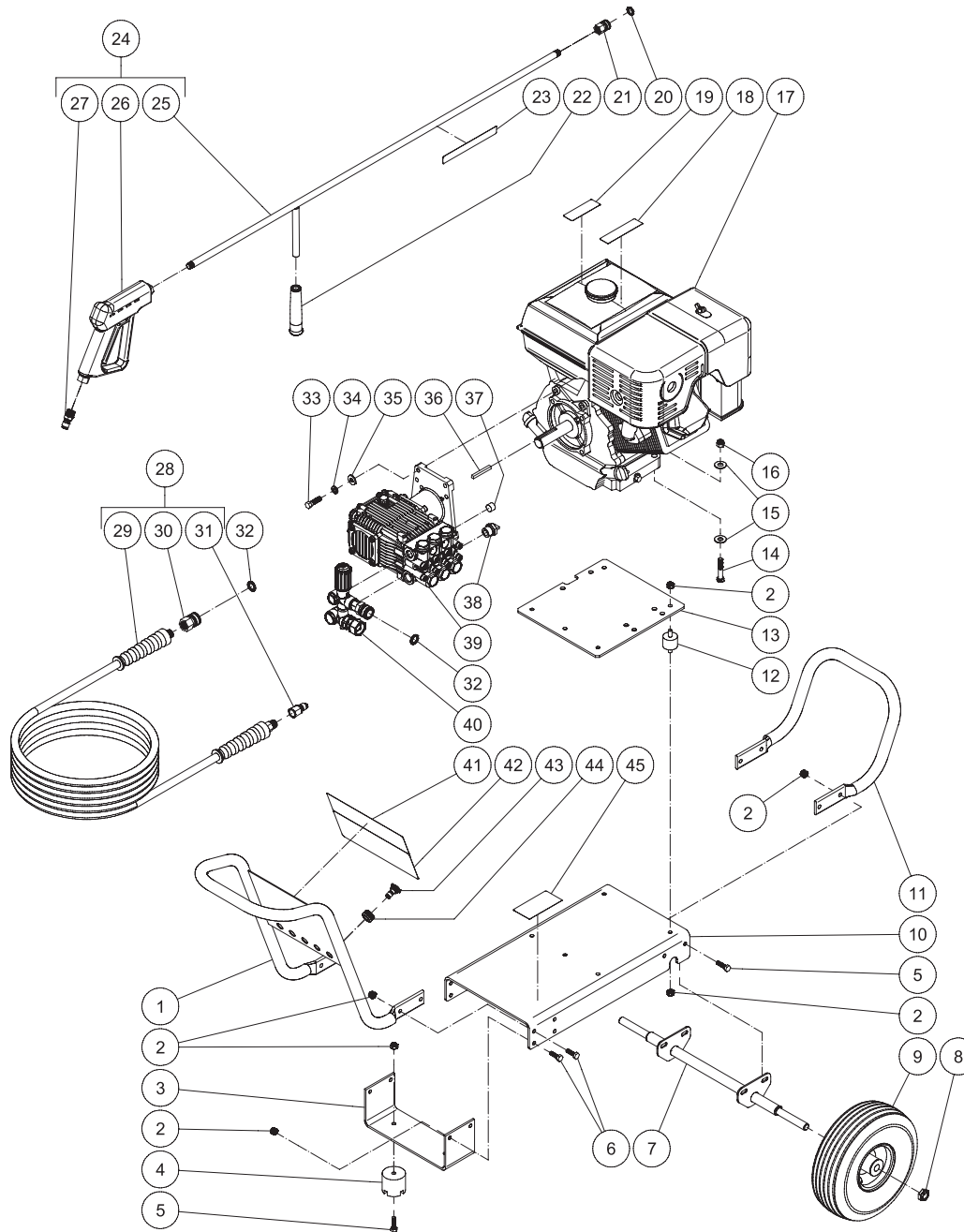
MODEL NUMBER	CA-4004-1MAH	CA-4004-1MAK	CA-4004-1MAS
Operating Pressure (PSI/Bar):	4000 / 275.8		
High Pressure Nozzle:	3.5		
Water Volume (GPM/lpm):	3.5 / 13.2		
Engine:	Honda	Kohler	Subaru
Model	GX390	CH440	EX40
Engine Type	4 Stroke, Overhead Valve, Single Cylinder		4 Stroke, Overhead Cam, Single Cylinder
Oil Type	SAE10W-30		
Oil Capacity (oz./liters)	37.2 / 1.1	44.0/1.3	40.5 / 1.2
Low Oil Protection	Oil Alert™	Oil Sensor	
Fuel Type	Unleaded Gasoline 86 Octane Minimum		
Fuel Capacity (gallon/ liters)	1.61 / 6.1		1.85 / 7.0
Starting	Recoil		
Maximum No Load RPM	3600		
Pump:	Direct Driven, Oil Bath, Triplex Piston		
Oil Type	Mi-T-M Pump Oil #AW-4085-0016		
Oil Capacity (oz./liters)	18.5 / .55		
Plungers	Ceramic		
Manifold	Forged Brass		
Valves	Stainless Steel		
Unloader	Adjustable		
Thermal Relief Valve	Relieves heated water during unloader bypass stage		
Unit Net Weight (lbs/Kg)	125 / 57		
Unit Shipping Weight (lbs/Kg)	175 / 79.5		
Unit Net Dimension (in/cm)	42.5L x 23.5W x 25H / 108L x 60W x 63.5H		
Unit Shipping Dimension (in/cm)	39.5H x 25W x 31.5H / 100.5L x 63.5W x 80H		

NOTES

DATE	SERIAL # BREAK	REASON FOR CHANGE
11/12/13	#10754656	CHANGED AXLE

NOTES

FRAME ASSEMBLY (AFTER SERIAL #10754656)



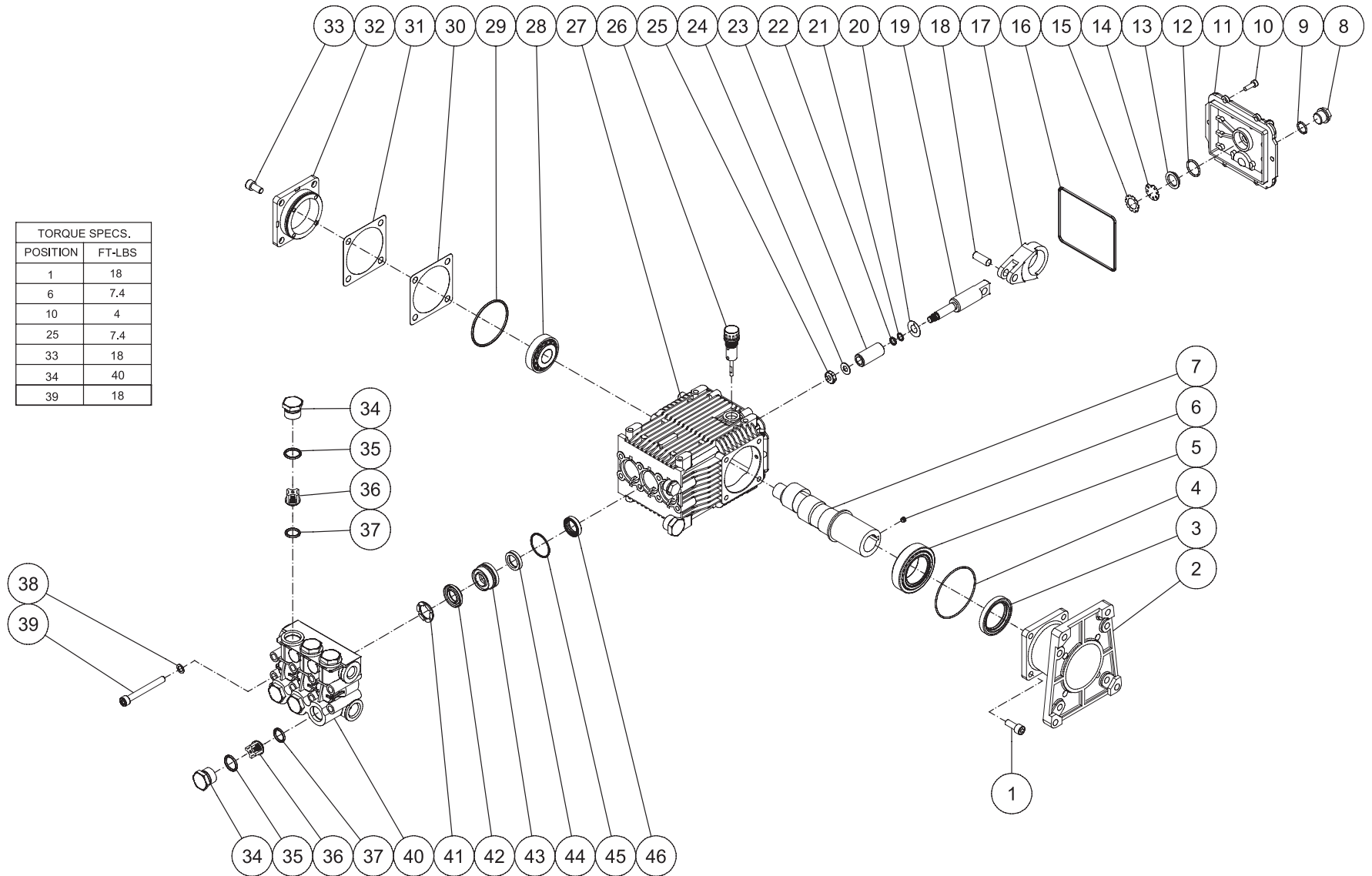
CA-4004-1MAH_AK_AS-101713-CH

FRAME ASSEMBLY

ITEM	DESCRIPTION	Mi-T-M #	QTY	ITEM	DESCRIPTION	Mi-T-M #	QTY
1	HANDLE	7-0182	1	24	GUN/WAND ASSEMBLY (25-27)	851-0371	1
2	LOCKNUT	30-0157	22	25	WAND (INC GRIP & QC)	16-0439	1
3	BRACKET	56-0054	1	26	GUN	16-0001	1
4	ISOLATOR	14-0008	2	27	QUICK CONNECT	17-0005	1
5	BOLT	27-0068	6	28	PRESSURE HOSE ASSEMBLY (29-31)	851-0338	1
6	BOLT	27-0067	8	29	HOSE	15-0209	1
7	AXLE	13-0230A53	1	30	QC SOCKET	17-0004	1
8	LOCKNUT	30-0117	2	31	QUICK CONNECT	17-0006	1
9	WHEEL	14-0130	2	32	O-RING	25-0123	2
10	BASEPLATE	5-0207	1	33	BOLT	27-0118	4
11	HANDLE	7-0183	1	34	LOCKWASHER	29-0008	4
12	ISOLATOR	14-0097	4	35	WASHER	28-0022	4
13	ISOLATION PLATE	56-0053	1	36	KEY	43-0078	1
14	BOLT	27-0121	4	37	PLUG	23-0244	1
15	WASHER	28-0023	8	38	RELIEF VALVE	22-0005	1
16	LOCKNUT	30-0159	4	39	PUMP	3-0310	1
17	ENGINE - HONDA	1-0086	1	40	UNLOADER ASSY WITHOUT CHEM INJ	8-0630	1
-	ENGINE - SUBARU	1-0176	1	41	DECAL	N/A	1
-	ENGINE - KOHLER	1-0208	1	42	DECAL - WARNING/CAUTION/OPERATION (SEE 71-0065)	N/A	1
18	DECAL - RISK OF BURNS (SEE 71-0065)	N/A	1	43	NOZZLE	18-0392	1
19	DECAL - RISK OF FIRE (SEE 71-0065)	N/A	1	-	NOZZLE	18-0393	1
20	O-RING	25-0122	1	-	NOZZLE	18-0395	1
21	QUICK CONNECT	17-0001	1	44	GROMMET	33-0001	5
22	GRIP	7-0002	1	45	DECAL- SILVER STICKER	N/A	1
23	DECAL - RISK OF INJECTION (SEE 71-0065)	N/A	1	-	DECAL SET	71-0065	1

PUMP ASSEMBLY (3-0310)

TORQUE SPECS.	
POSITION	FT-LBS
1	18
6	7.4
10	4
25	7.4
33	18
34	40
39	18



3-0310-061913-RAG

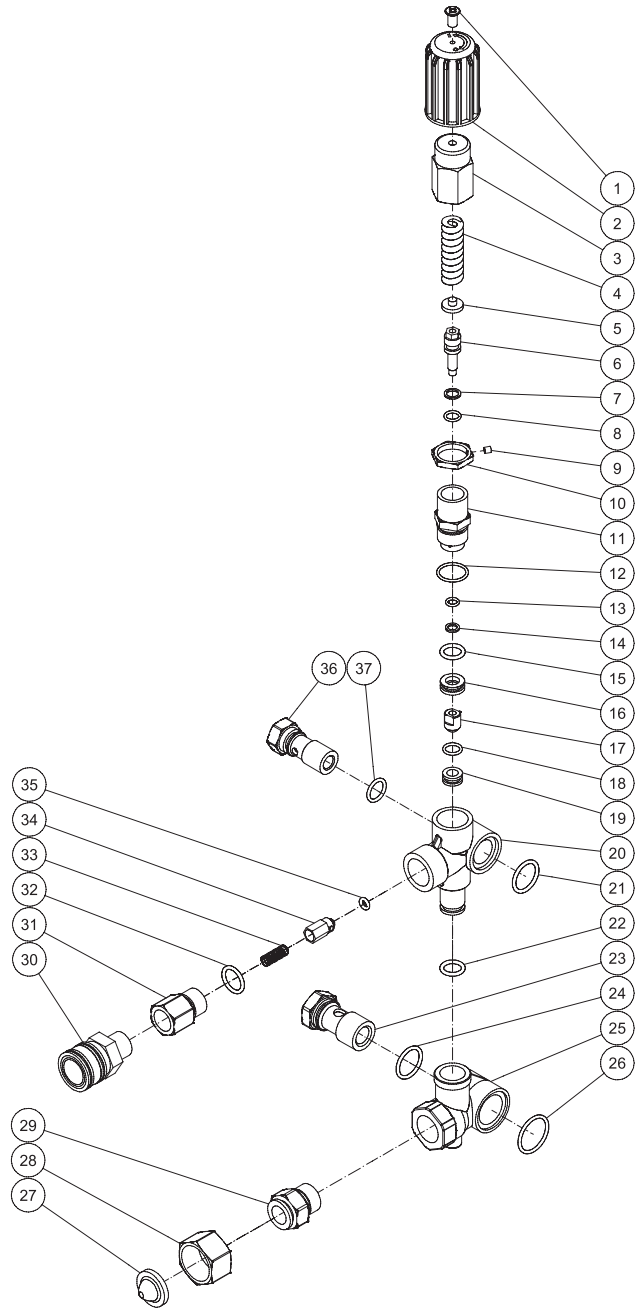
PUMP ASSEMBLY

ITEM	DESCRIPTION	PART #	QTY	ITEM	DESCRIPTION	PART #	QTY
1	SCREW	27-8432	4	25	NUT (SEE KIT 70-0352)	30-6020	3
2	PUMP FLANGE	46-0714	1	26	OIL DIPSTICK	39-0090	1
3	OIL SEAL (SEE KIT 70-0337)	26-0194	1	27	CRANKCASE	46-1198	1
4	O-RING (SEE KIT 70-0337)	25-0397	1	28	BEARING	48-0072	1
5	BEARING	48-0062	1	29	O-RING (SEE KIT 70-0337)	25-0380	1
6	SET SCREW	27-8886	1	30	SHIM	46-0705	(1-3)
7	CRANKSHAFT	46-0959	1	31	SHIM	46-0704	(1-3)
8	PLUG	39-0086	2	32	BEARING CAP/SUPPORT	46-0703	1
9	O-RING	25-0325	2	33	BOLT	27-8884	4
10	BOLT	27-8885	6	34	VALVE CAP	39-0095	6
11	CRANKCASE COVER	46-0719	1	35	O-RING	25-0160	6
12	O-RING	25-0370	1	36	VALVE (SEE KIT 70-0179)	SEE KIT	6
13	OIL SIGHT GLASS	46-0670	1	37	O-RING (SEE KIT 70-0179)	25-0386	6
14	OIL REFLECTOR	46-0824	1	38	LOCKWASHER	29-0154	8
15	SPRING RETAINER	46-0671	1	39	BOLT	27-8440	8
16	O-RING (SEE KIT 70-0337)	25-0398	1	40	MANIFOLD	46-1186	1
17	CONNECTING ROD	46-0922	3	41	SUPPORT RING (SEE KIT 70-0178)	46-0710	3
18	PISTON PIN	46-0698	3	42	V PACKING (SEE KIT 70-0177)	46-0709	3
19	PLUNGER ROD	46-0699	3	43	PACKING RETAINER	46-0708	3
20	SLINGER WASHER (SEE KIT 70-0352)	46-0700	3	44	LOW PRESSURE SEAL (SEE KIT 70-0177)	46-0707	3
21	O-RING (SEE KIT 70-0352)	25-0404	3	45	O-RING (SEE KIT 70-0177)	25-0384	3
22	O-RING (SEE KIT 70-0352)	25-0382	3	46	OIL SEAL (SEE KIT 70-0337)	46-0931	3
23	PISTON (SEE KIT 70-0352)	46-0701	3	47	O-RING	25-0372	1
24	WASHER/GASKET (SEE KIT 70-0352)	26-0191	3	48	PLUG	39-0088	1

REPLACEMENT KITS

KIT #	DESCRIPTION	ITEMS	# OF ASSEMBLIES	# OF CYLINDERS
70-0337	KIT - OIL SEALS	3,4,16,29,46	1,1,1,1,3	3
70-0352	KIT - PISTONS	20-25	3	3
70-0177	KIT - HIGH PRESSURE SEALS	42,44,45	3	3
70-0178	KIT - SUPPORT RINGS	41	3	3
70-0179	KIT-VALVES	36,37	6	3

UNLOADER ASSEMBLY (8-0630)



8-0630 102714 JDK

UNLOADER ASSEMBLY				
ITEM	DESCRIPTION		PART #	QTY
1	SCREW (SEE KIT 70-0647)		27-2772	1
2	KNOB (SEE KIT 70-0647)		7-0250	1
3	KNOB (SEE KIT 70-0647)		SEE KIT	1
4	SPRING (SEE KIT 70-0647)		SEE KIT	1
5	SPRING SEAT (SEE KIT 70-0647)		SEE KIT	1
6	VALVE ROD (SEE KIT 70-0647)		SEE KIT	1
7	SUPPORT RING (SEE KIT 70-0647)		SEE KIT	1
8	O-RING (SEE KIT 70-0647)		25-0651	1
9	SET SCREW (SEE KIT 70-0647)		8-0479	1
10	JAM NUT (SEE KIT 70-0647)		SEE KIT	1
11	VALVE BODY (SEE KIT 70-0647)		SEE KIT	1
12	O-RING (SEE KIT 70-0647)		25-0652	1
13	O-RING (SEE KIT 70-0647)		25-0163	1
14	SUPPORT RING (SEE KIT 70-0647)		SEE KIT	1
15	O-RING (SEE KIT 70-0647)		25-0655	1
16	BY PASS JET UNLOADER (SEE KIT 70-0647)		SEE KIT	1
17	BULLET (SEE KIT 70-0647)		SEE KIT	1
18	O-RING (SEE KIT 70-0647)		25-0656	1
19	VALVE SEAT (SEE KIT 70-0647)		SEE KIT	1
20	VALVE HOUSING		SEE KIT	1
21	O-RING		25-0664	1
22	O-RING		25-0684	1
23	INLET BANJO BOLT		8-0595	1
24	O-RING		25-0602	1
25	BY PASS HOUSING		SEE KIT	1
26	O-RING		25-0654	1
27	FILTER (SEE KIT 23-0095)		19-0001	1
28	SWIVEL NUT (SEE KIT 23-0095)		SEE KIT	1
29	INLET CONNECTOR (SEE KIT 23-0095)		SEE KIT	1
30	QUICK CONNECT SOCKET		17-0007	1
31	OUTLET CONNECTOR		46-1389	1
32	O-RING		25-0386	1
33	SPRING (SEE KIT 70-0500)		SEE KIT	1
34	CHECKING VALVE (SEE KIT 70-0500)		SEE KIT	1
35	O-RING (SEE KIT 70-0500)		25-0653	1
36	OUTLET BANJO BOLT		8-0594	1
37	O-RING		25-0169	1

REPLACEMENT KITS			
KIT #	DESCRIPTION	ITEMS	# OF ASSEMBLIES
23-0095	KIT - GARDEN HOSE INLET ASSY	27-29	1
70-0500	KIT - NON-RETURN VALVES	33-35	1
70-0647	KIT - UNLOADER REBUILD	1-19	1

Manufactured by Mi-T-M
8650 Enterprise Drive, Peosta IA 52068
563-556-7484/ Fax 563-556-1235