



## Chore Master®

PARTS LIST FOR

***CM-2500-4MHC***

***CM-3000-4MHC***

***CM-3000-4MKC***

***CM-3000-4MMC***

Engine Oil Capacity:

Pump Oil Grade:

Pump Oil Capacity:

Nozzle Size:

See Model Specifications

Mi-T-M Pump Oil AW-4085-0016

3.6 oz. / 0.11 L

3.0

This Parts Listing has been compiled for your benefit. You can be assured your cold water pressure washer was constructed and designed with quality and performance in mind. Each component has been rigorously tested to insure the highest level of quality.

The contents of this Parts Listing are based on the latest product information available at the time of publication. Mi-T-M reserves the right to make changes in price, color, materials, equipment, specifications or models at any time without notice.

### **WARNING**

THIS IS A PROFESSIONAL HIGH PRESSURE, COLD WATER PRESSURE WASHER. CAUTION SHOULD BE OBSERVED WHEN USING OR REPAIRING THIS UNIT! READ AND FOLLOW THE SAFETY WARNINGS LISTED BELOW BEFORE ATTEMPTING ANY REPAIRS ON THIS PRESSURE WASHER!

### **SAFETY WARNINGS**

1. NEVER alter or modify the equipment. Be sure any accessory items and system components being used will withstand the pressure developed. Use only genuine manufacturer parts for repair of your pressure washer. Failure to do so can cause hazardous operating conditions and will VOID warranty.
2. NEVER make adjustments on machinery while the unit is connected to the engine without first removing the ignition cable from the spark plug. Turning over the machinery by hand during adjustment or cleaning might start the engine and machinery with it, causing serious injury to the operator.
3. Know how to stop and bleed pressures quickly. Be thoroughly familiar with controls.
4. Before servicing the unit, turn unit off, relieve the water pressure and allow the unit to cool down. Do not make repairs while the unit is running. Service in a clean, dry, flat area. Block the wheels to prevent the unit from moving. Be especially careful to properly dispose of any flammable materials.
5. After testing the machine, DO NOT leave the pressurized unit unattended. Shut off the unit and release trapped pressure before leaving.

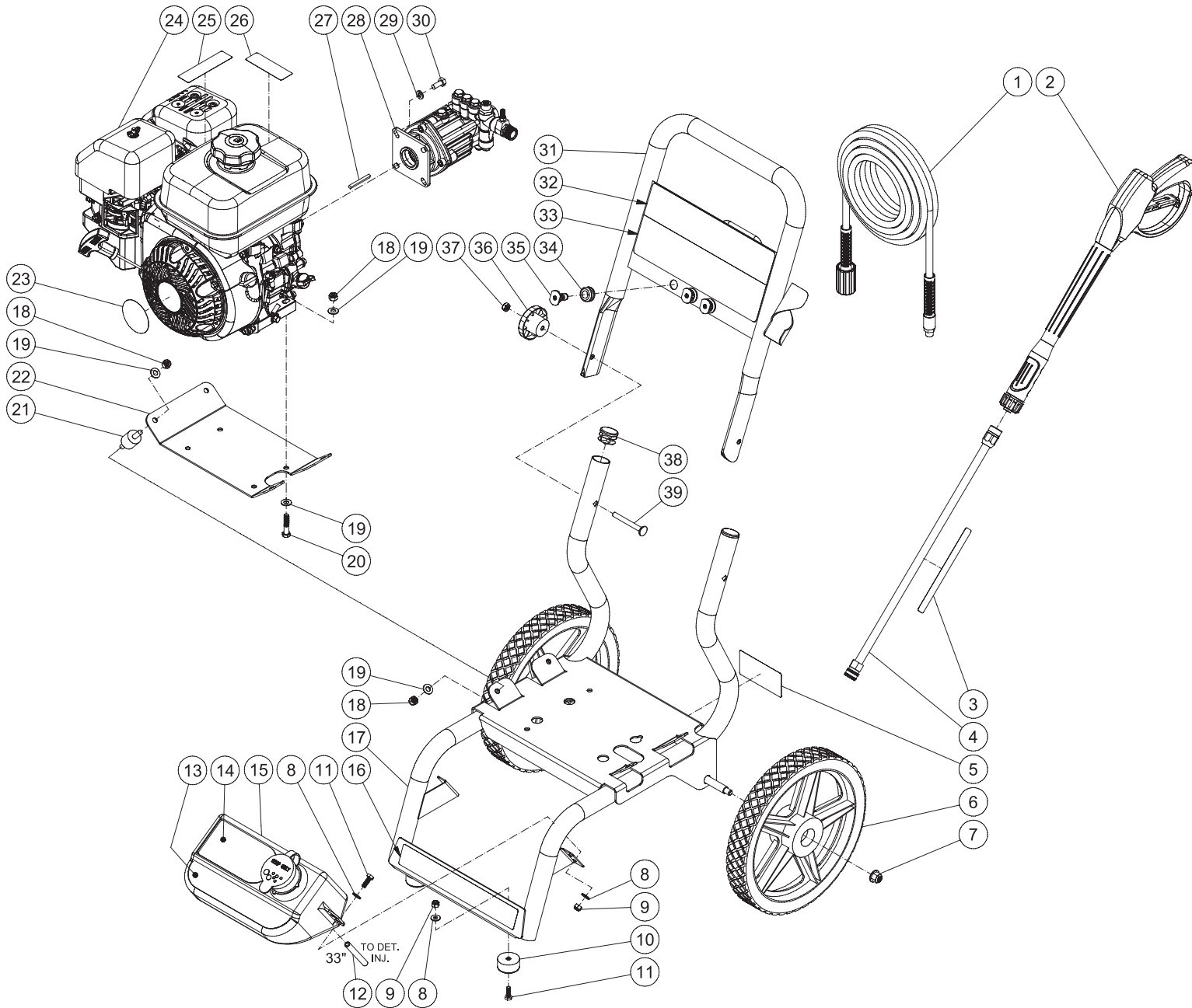
### **Table of Contents**

<b>SPECIFICATIONS.....</b>	<b>3</b>
<b>FRAME ASSEMBLY .....</b>	<b>4</b>
<b>MOTOR / PUMP ASSEMBLY (3-0411).....</b>	<b>6</b>

## SPECIFICATIONS

MODEL NUMBER	CM-2500-4MHC	CM-3000-4MHC	CM-3000-4MKC	CM-3000-4MMC
Operating Pressure (PSI/Bar):	2500/138	3000/206.8	3000/206.8	3000/206.8
High Pressure Nozzle:	3.0	3.0	3.0	3.0
Water Volume (GPM/lpm):	2.3/8.7	2.3/8.7	2.3/8.7	2.3/8.7
Engine:	Honda	Honda	Kohler	Mi-T-M
Model #	GC160	GC190	SH265	212
Engine Type	4 Stroke, Overhead Cam, Single Cylinder	4 Stroke, Overhead Cam, Single Cylinder	4 Stroke, Overhead Valve, Single Cylinder	4 Stroke, Overhead Valve, Single Cylinder
Oil Type	SAE10W-30	SAE10W-30	SAE10W-30	SAE10W-30
Oil Capacity (oz./liters)	19.5/0.58	19.5/0.58	20.2/0.60	20.2/0.60
Fuel Type	Unleaded Gasoline 86 Octane Minimum	Unleaded Gasoline 86 Octane Minimum	Unleaded Gasoline 86 Octane Minimum	Unleaded Gasoline 86 Octane Minimum
Fuel Capacity (gallon/ liters)	0.48/1.8	0.48/1.8	0.95/3.6	0.95/3.6
Starting	Recoil	Recoil	Recoil	Recoil
Maximum No Load RPM	3800 (+/- 100) RPM	3800 (+/- 100) RPM	3800 (+/- 100) RPM	3800 (+/- 100) RPM
Pump:	Direct Driven, Oil Bath, Axial Piston	Direct Driven, Oil Bath, Axial Piston	Direct Driven, Oil Bath, Axial Piston	Direct Driven, Oil Bath, Axial Piston
Oil Type	SAE 20W-40	SAE 20W-40	SAE 20W-40	SAE 20W-40
Oil Capacity (oz./liters)	3.6/0.11	3.6/0.11	3.6/0.11	3.6/0.11
Plungers	Ceramic Coated	Ceramic Coated	Ceramic Coated	Ceramic Coated
Manifold	Forged Brass	Forged Brass	Forged Brass	Forged Brass
Valves	Stainless Steel	Stainless Steel	Stainless Steel	Stainless Steel
Unloader	Preset	Preset	Preset	Preset
Heat Dump Valve	Relieves heated water during unloader by-pass stage	Relieves heated water during unloader by-pass stage	Relieves heated water during unloader by-pass stage	Relieves heated water during unloader by-pass stage
Detergent Injector	Low pressure down stream from pump	Low pressure down stream from pump	Low pressure down stream from pump	Low pressure down stream from pump
Detergent Tank	Yes	Yes	Yes	Yes
Unit Net Weight (lbs/Kg)	64/29	68/31	74/33.5	74/33.5
Unit Shipping Weight (lbs/Kg)	74/33.5	78/35	84/38	84/38
Unit Net Dimension (in/cm)	26.7Lx18.6Wx39.3H/ 68Lx47Wx100H	26.7Lx18.6Wx39.3H/ 68Lx47Wx100H	26.7Lx18.6Wx39.3H/ 68Lx47Wx100H	26.7Lx18.6Wx39.3H/ 68Lx47Wx100H
Unit Shipping Dimension (in/cm)	25.5Lx18.5Wx26.75H/ 65Lx47Wx68H	25.5Lx18.5Wx26.75H/ 65Lx47Wx68H	25.5Lx18.5Wx26.75H/ 65Lx47Wx68H	25.5Lx18.5Wx26.75H/ 65Lx47Wx68H

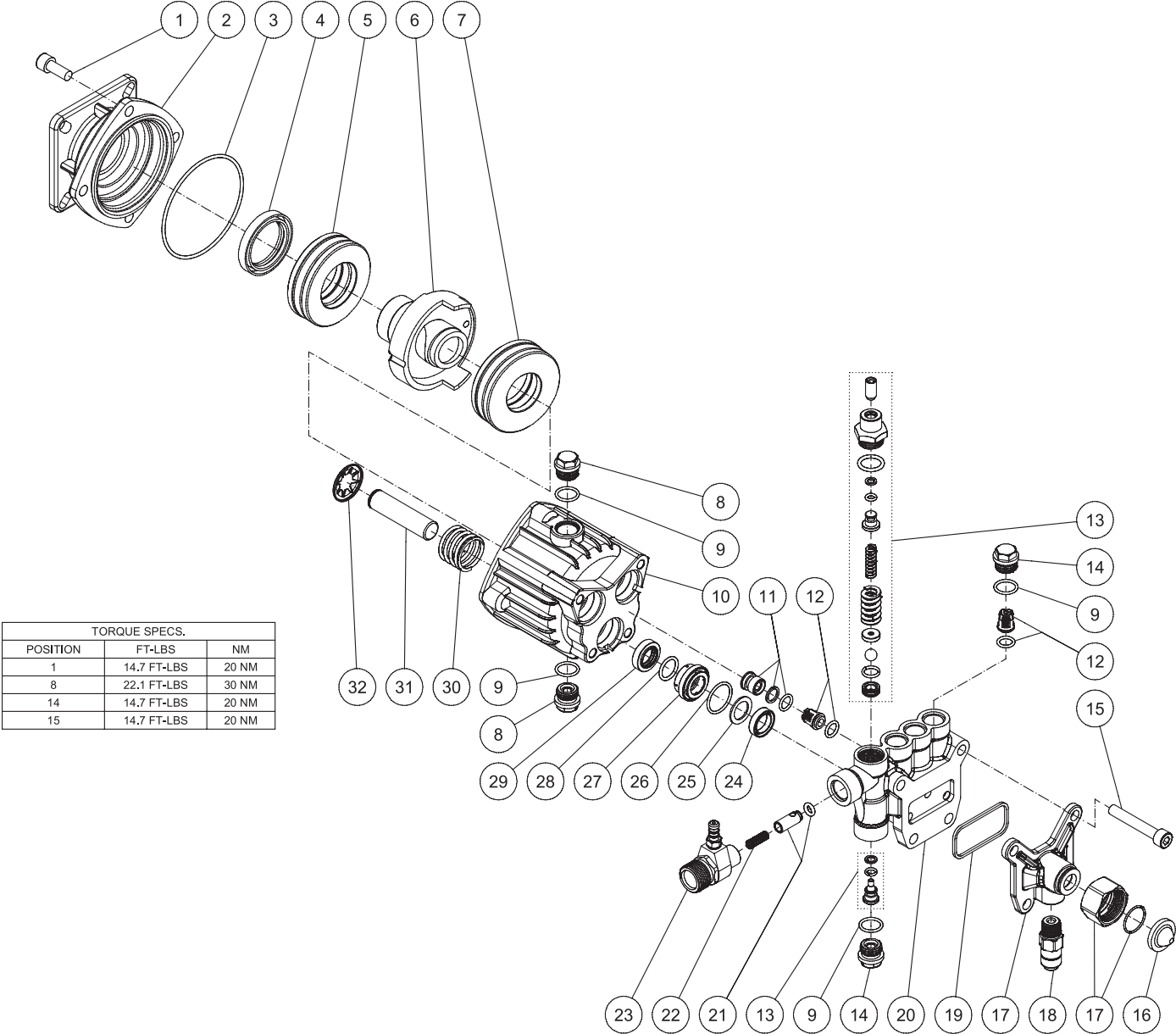
# FRAME ASSEMBLY



CM-2500-4MHC\_3000-4MHC\_4MKC\_4MMC 012616 CH

FRAME ASSEMBLY			
ITEM	DESCRIPTION	PART #	QTY
1	HIGH PRESSURE HOSE	15-0239	1
2	GUN & WAND - 4000 PSI	16-0442	1
3	DECAL - RISK OF INJECTION (SEE 71-1060)	N/A	1
4	LANCE ASSEMBLY	16-0366	1
5	DECAL- SILVER STICKER	N/A	1
6	WHEEL	14-0111	2
7	LOCKNUT	30-3161	2
8	WASHER	28-0002	10
9	LOCKNUT	30-0155	6
10	ISOLATOR	14-0069	2
11	BOLT	27-0015	6
12	HOSE *(THREE FEET REQUIRED)	15-0021	1
13	DECAL-DETERGENT INS	34-3408	1
14	DECAL-DETERGENT INFO	34-3407	1
15	CHEMICAL TANK W/CAP	12-0261	1
16	DECAL - CHOREMASTER	34-3382	1
17	FRAME	5-0358A53	1
18	LOCKNUT	30-0157	12
19	WASHER	28-0003	16
20	BOLT	27-0069	4
21	ISOLATOR	14-0096	4
22	ISOLATION PLATE	5-0359A01	1
23	DECAL - REWIND 212CC (3000-4MMC)	34-2863	1
24	ENGINE (3000-4MKC)	1-0223	1
-	ENGINE (2500-4MHC)	1-0104	1
-	ENGINE (3000-4MMC)	1-0221	1
-	ENGINE (3000-4MHC)	1-0155	1
25	DECAL - RISK OF BURNS (SEE 71-1060)	N/A	1
26	DECAL - RISK OF FIRE (SEE 71-1060)	N/A	1
27	KEY	43-0073	1
28	PUMP	3-0411	1
29	LOCKWASHER	29-0007	4
30	BOLT	27-0091	4
31	HANDLE	7-0264A01	1
32	DECAL - PLACARD 2500PSI	34-3383	1
-	DECAL - PLACARD 3000PSI	34-3384	1
33	DECAL - WARNING/CAUTION/OPERATION (SEE 71-1060)	N/A	1
34	GROMMET	33-0001	3
35	NOZZLE 15° DETERGENT	18-0388	1
-	NOZZLE 25° DETERGENT	18-0390	1
-	NOZZLE 65° DETERGENT	18-0386	1
36	KNOB	7-0261	2
37	LOCKNUT	30-0178	2
38	PLUG	39-0380	2
39	CARRIAGE BOLT	31-0054	2
-	DECAL SET	71-1060	1
*MUST ORDER IN ONE FOOT LENGTHS			

# PUMP ASSEMBLY (3-0411)



3-0411 080714 KMD

PUMP ASSEMBLY			
ITEM	DESCRIPTION	PART #	QTY
1	SCREW	27-8432	4
2	FLANGE	46-1330	1
3	O-RING	25-0605	1
4	OIL SEAL	26-0320	1
5	REAR BEARING	N/A	1
6	WOBBLE PLATE ASSEMBLY	N/A	1
7	FRONT BEARING	N/A	1
8	PLUG	39-0233	2
9	O-RING	25-0606	6
10	PUMP HOUSING	N/A	1
11	KIT - INLET PLUG ASSEMBLY (SEE KIT 70-0512)	SEE KIT	3
12	VALVE ASSEMBLY (SEE KIT 70-0516)	SEE KIT	6
13	KIT - COMPLETE UNLOADER	70-0646	1
14	PLUG	39-0372	4
15	BOLT	27-9569	4
16	FILTER	19-0001	1
17	KIT- INLET ASSEMBLY	70-0514	1
18	THERMAL RELIEF VALVE	22-0408	1
19	INLET BODY SEAL	26-0327	1
20	PUMP HEAD	N/A	1
21	KIT - NON-RETURN VALVE	70-0511	1
22	NON-RETURN VALVE SPRING	46-1332	1
23	KIT - OUTLET/BARB ASSEMBLY	70-0510	1
24	WATER SEAL (SEE KIT 70-0515)	SEE KIT	3
25	WATER SEAL WASHER (SEE KIT 70-0515)	SEE KIT	3
26	O-RING (SEE KIT 70-0515)	SEE KIT	3
27	LOCATING RING	46-1586	3
28	O-RING (SEE KIT 70-0515)	SEE KIT	3
29	OIL SEAL	26-0325	3
30	PLUNGER SPRING	N/A	3
31	PISTON	46-1587	3
32	SPRING DISK	N/A	3

REPLACEMENT KITS				
KIT #	DESCRIPTION	ITEMS	# OF ASSEMBLIES	# OF CYLINDERS
70-0512	KIT - INLET PLUG	11	3	3
70-0515	KIT - PACKINGS	24, 25, 26, 28	3, 3, 3, 3	3
70-0516	KIT - VALVES W/ O-RING	12	6	3

Manufactured by Mi-T-M  
50 MI-T-M Drive, Peosta IA 52068  
563-556-7484/ Fax 563-556-1235