



PARTS LIST FOR
CM-3000-ODLB
CM-3000-ODLB-C
(AFTER SERIAL #10817968)

Displacement:	212 cc
Pump Oil Grade:	Mi-T-M Pump Oil AW-4085-0016
Pump Oil Capacity:	16 oz.
Nozzle Size:	# 3.0

This Parts Listing has been compiled for your benefit. You can be assured your cold water pressure washer was constructed and designed with quality and performance in mind. Each component has been rigorously tested to insure the highest level of quality.

The contents of this Parts Listing are based on the latest product information available at the time of publication. Mi-T-M reserves the right to make changes in price, color, materials, equipment, specifications or models at any time without notice.

WARNING

THIS IS A PROFESSIONAL HIGH PRESSURE, COLD WATER PRESSURE WASHER. CAUTION SHOULD BE OBSERVED WHEN USING OR REPAIRING THIS UNIT! READ AND FOLLOW THE SAFETY WARNINGS LISTED BELOW BEFORE ATTEMPTING ANY REPAIRS ON THIS PRESSURE WASHER!

SAFETY WARNINGS

- 1. NEVER alter or modify the equipment. Be sure any accessory items and system components being used will withstand the pressure developed. Use only genuine manufacturer parts for repair of your pressure washer. Failure to do so can cause hazardous operating conditions and will VOID warranty.
- 2. NEVER make adjustments on machinery while the unit is connected to the engine without first removing the ignition cable from the spark plug. Turning over the machinery by hand during adjustment or cleaning might start the engine and machinery with it, causing serious injury to the operator.
- 3. Know how to stop and bleed pressures quickly. Be thoroughly familiar with controls.
- 4. Before servicing the unit, turn unit off, relieve the water pressure and allow the unit to cool down. Do not make repairs while the unit is running. Service in a clean, dry, flat area. Block the wheels to prevent the unit from moving. Be especially careful to properly dispose of any flammable materials.
- 5. After testing the machine, DO NOT leave the pressurized unit unattended. Shut off the unit and release trapped pressure before leaving.

Table of Contents

SPECIFICATIONS.....3

NOTES4

NOTES5

FRAME ASSEMBLY FOR CM-3000-ODLB / CM-3000-ODLB-C (AFTER SERIAL #10845374).....6

MOTOR / PUMP ASSEMBLY (3-0414).....8

UNLOADER (8-0632).....10

SPECIFICATIONS

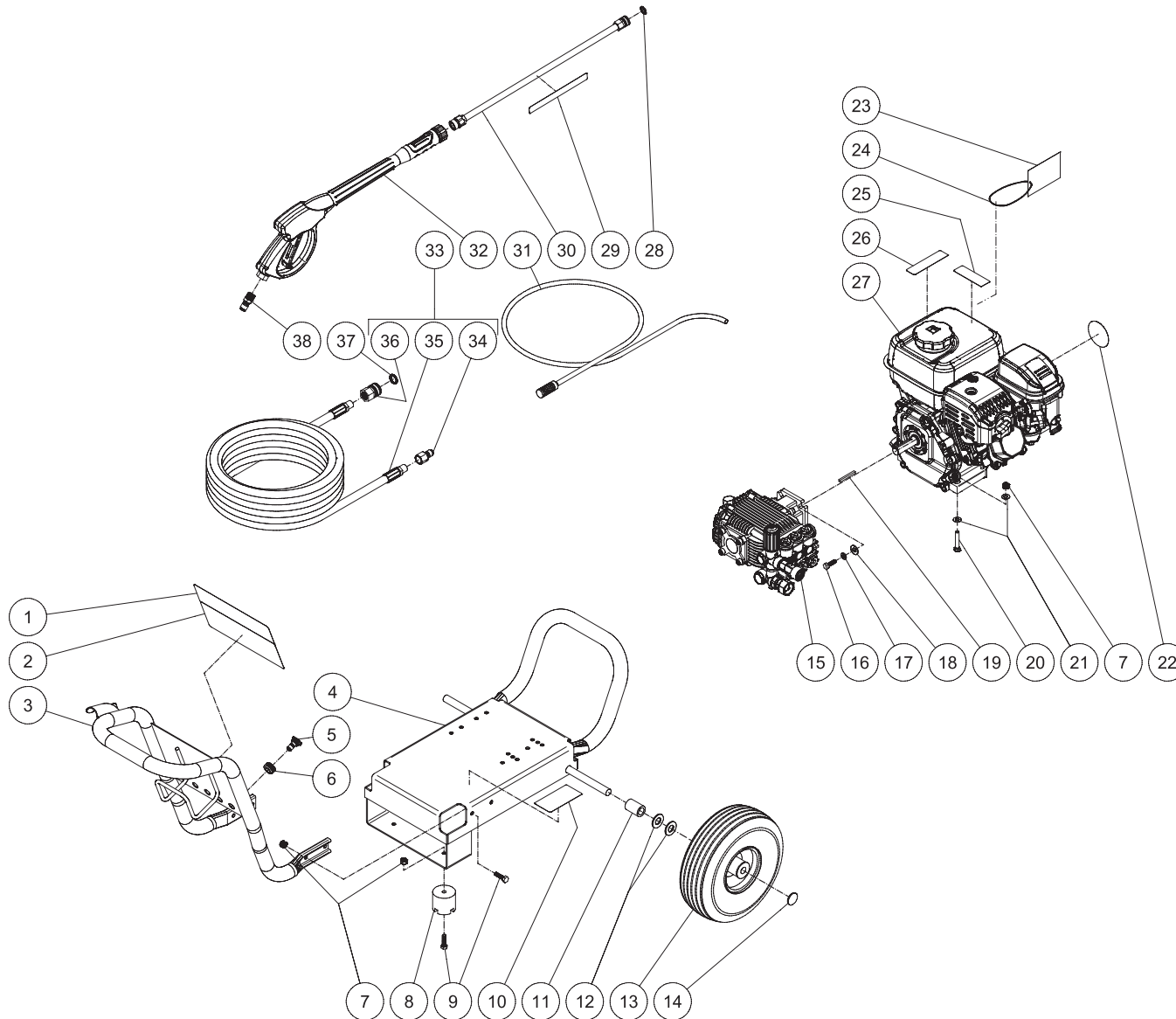
MODEL NUMBER	CM-3000-ODLB / CM-3000-ODLB-C
Operating Pressure (PSI/Bar):	3000/207
High Pressure Nozzle:	3.0
Water Volume (GPM/lpm):	2.4/9.09
Engine:	Mi-T-M
Displacement (cc)	212
Engine Type	4 Stroke, Overhead Valve, Single Cylinder
Oil Type	SAE10W-30
Oil Capacity (oz./liters)	20/.6
Fuel Type	Unleaded Gasoline 86 Octane Minimum
Fuel Capacity (gallon/ liters)	.95/3.6
Starting	Recoil
Maximum No Load RPM	3700 (+/- 100) RPM
Pump:	Direct Driven, Oil Bath, Triplex Piston
Oil Type	Mi-T-M Pump Oil AW-4085-0016
Oil Capacity (oz./liters)	16/.47
Plungers	Ceramic
Manifold	Forged Brass
Valves	Stainless Steel
Unloader	Adjustable
Detergent Injector	Low pressure downstream from pump
Unit Net Weight (lbs/Kg)	85/38.6
Unit Shipping Weight (lbs/Kg)	110/49.9
Unit Net Dimension (cm)	37Lx21Wx24.5H/ 94Lx53.5Wx62.5H
Unit Shipping Dimension (cm)	30.5Lx21.5Wx28.5H/ 77.5Lx55Wx72.5H

NOTES

DATE	SERIAL #	REASON
04-29-13	#10731164	CHANGED ENGINE FROM 1-0166 TO 1-0221
10-09-14	#10817968	REPLACED FRONT HANDLE 7-0194 WITH 7-0256
03-02-15	#10845374	CHANGE PUMP FROM 3-0297 TO 3-0414

NOTES

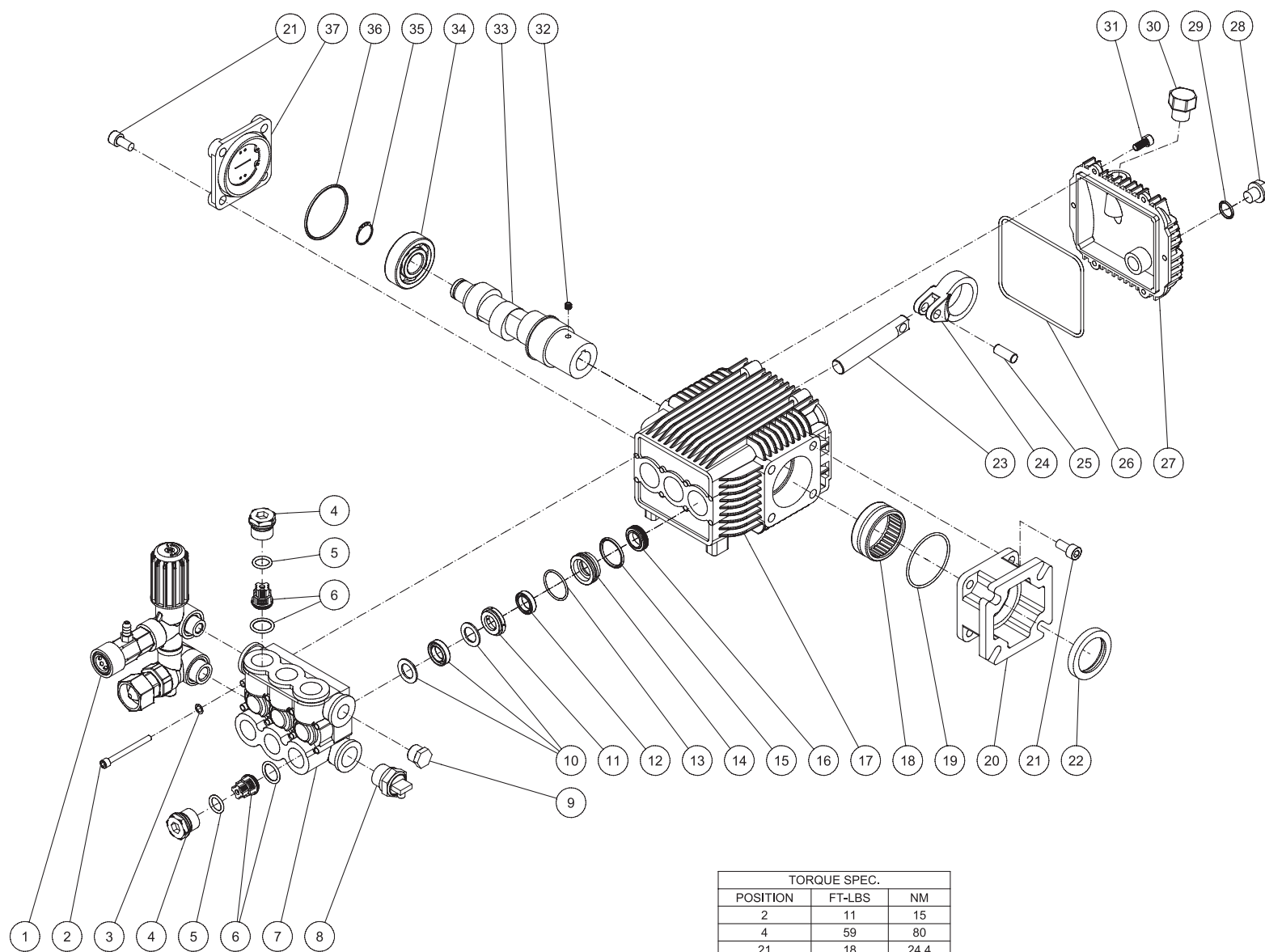
FRAME ASSEMBLY FOR CM-3000-ODLB / CM-3000-ODLB-C (AFTER SERIAL #10845374)



CM-3000-ODLB 022715 JDK

CM-3000-0DLB -C 022715 JDK			
FRAME ASSEMBLY			
ITEM	DESCRIPTION	PART #	QTY
1	DECAL - MARKETING	34-2751	1
2	DECAL - WARNING/CAUTION/OPERATION (SEE 71-0065)	N/A	1
3	HANDLE	7-0256A75	1
4	BASEPLATE	5-0253A74	1
5	NOZZLE	18-0386	1
-	NOZZLE	18-0388	1
-	NOZZLE	18-0390	1
6	GROMMET	33-0001	5
7	LOCKNUT	30-0157	10
8	ISOLATOR	14-0008	2
9	BOLT	27-0068	6
10	DECAL- SILVER STICKER	N/A	1
11	SPACER	62-0176	2
12	WASHER	28-0008	4
13	WHEEL	14-0130	2
14	CAP	33-0018	2
15	PUMP	3-0414	1
16	BOLT	27-0092	4
17	LOCKWASHER	29-0007	4
18	WASHER	28-0022	4
19	KEY	43-0073	1
20	BOLT	27-0070	4
21	WASHER	28-0003	8
22	DECAL	N/A	1
23	TAG	N/A	1
24	STRING	N/A	1
25	DECAL - RISK OF FIRE (SEE 71-0065)	N/A	1
26	DECAL - RISK OF BURNS (SEE 71-0065)	N/A	1
27	ENGINE	1-0221	1
28	O-RING	25-0122	1
29	DECAL - RISK OF INJECTION (SEE 71-0065)	N/A	1
30	LANCE ASSEMBLY	16-0366	1
31	DETERGENT HOSE	19-0233	1
32	GUN & WAND	16-0441	1
33	HOSE W/QC ENDS	15-0277	1
34	QUICK CONNECT	17-0006	1
35	HOSE	15-0277	1
36	QC SOCKET	17-0004	1
37	O-RING	25-0123	1
38	QUICK CONNECT	17-0005	1
-	DECAL SET	71-0065	1

MOTOR / PUMP ASSEMBLY (3-0414)



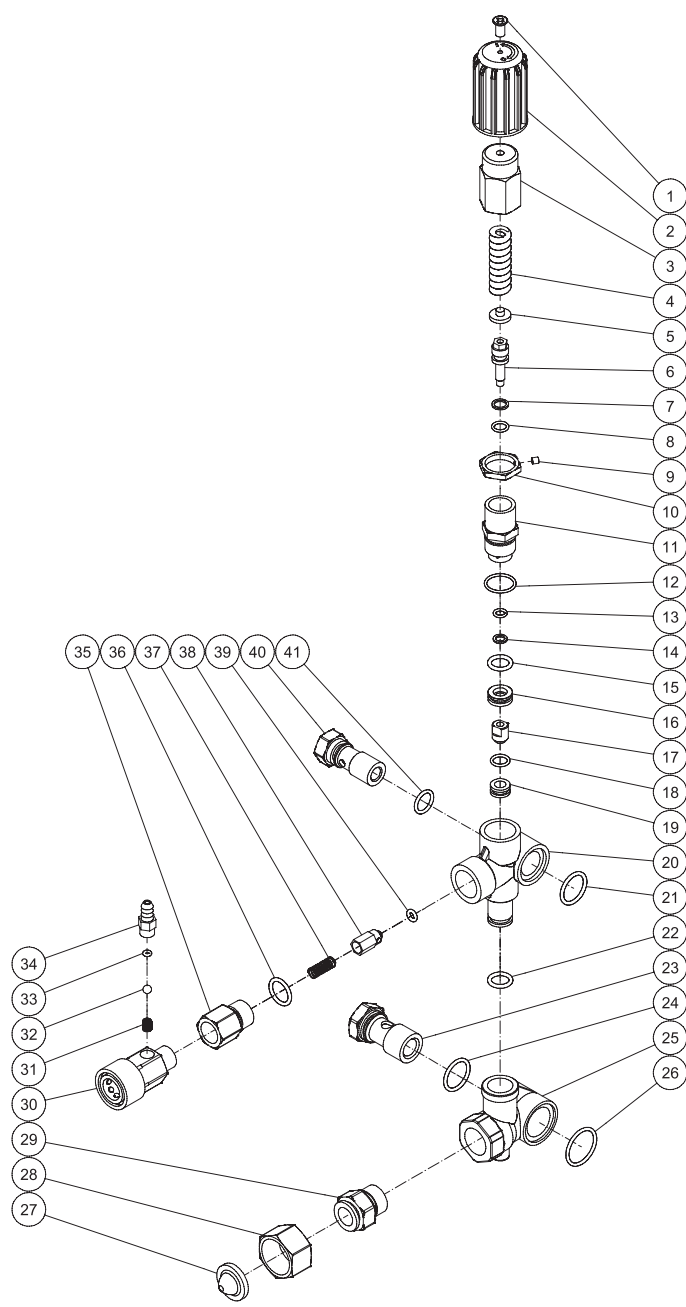
TORQUE SPEC.		
POSITION	FT-LBS	NM
2	11	15
4	59	80
21	18	24.4
30	7.4	10

3-0414 030915 JDK

3-0414 030915 JDK			
PUMP ASSEMBLY			
ITEM	DESCRIPTION	PART #	QTY
1	UNLOADER	8-0632	1
2	BOLT	27-0898	8
3	WASHER	28-0203	8
4	VALVE PLUG	39-0231	6
5	O-RING	25-0622	6
6	VALVE ASSEMBLY (SEE KIT 70-0502)	70-0502	6
7	MANIFOLD HEAD	46-1503	1
8	RELIEF VALVE	22-0005	1
9	PLUG	39-0102	1
10	HIGH PRESSURE PACKING (SEE KIT 70-0501)	SEE KIT	3
11	SEAL COMPACTION RING	46-1311	3
12	LOW PRESSURE SEAL (SEE KIT 70-0501)	SEE KIT	3
13	O-RING (SEE KIT 70-0501)	SEE KIT	3
14	RETAINER RING	46-1312	3
15	O-RING	25-0663	3
16	OIL SEAL	46-1313	3
17	CRANKCASE	N/A	1
18	NEEDLE BEARING	48-0096	1
19	O-RING	25-0603	1
20	FLANGE	46-1314	1
21	BOLT	27-8431	8
22	OIL SEAL	26-0320	1
23	PISTON - COATED	46-1504	3
24	CONNECTING ROD	46-1595	3
25	PISTON - PIN	46-1505	3
26	O-RING	25-0604	1
27	CRANKCASE COVER	46-1594	1
28	DRAIN PLUG	39-0376	1
29	O-RING	25-0606	1
30	OIL CAP	46-1593	1
31	BOLT	27-8401	6
32	SET SCREW	27-8886	1
33	CRANKSHAFT	N/A	1
34	BALL BEARING	48-0102	1
35	SNAP RING	46-1596	1
36	O-RING	25-0634	1
37	SIGHT GLASS ASSEMBLY	46-1597	1

REPLACEMENT KITS				
KIT #	DESCRIPTION	ITEMS	# OF ASSEMBLIES	# OF CYLINDERS
70-0501	KITS - PACKINGS	10, 12, 13	3, 3, 3	3
70-0502	KITS - VALVES W/ O-RING	6	6	3

UNLOADER (8-0632)



8-0632 102714 JDK

UNLOADER ASSEMBLY

ITEM	DESCRIPTION	PART #	QTY	ITEM	DESCRIPTION	PART #	QTY
1	SCREW (SEE KIT 70-0647)	27-2772	1	21	O-RING	25-0664	1
2	KNOB (SEE KIT 70-0647)	7-0250	1	22	O-RING	25-0684	1
3	KNOB (SEE KIT 70-0647)	SEE KIT	1	23	INLET BANJO BOLT	8-0595	1
4	SPRING (SEE KIT 70-0647)	SEE KIT	1	24	O-RING	25-0602	1
5	SPRING SEAT (SEE KIT 70-0647)	SEE KIT	1	25	BY PASS HOUSING	N/A	1
6	VALVE ROD (SEE KIT 70-0647)	SEE KIT	1	26	O-RING	25-0654	1
7	SUPPORT RING (SEE KIT 70-0647)	SEE KIT	1	27	FILTER (SEE KIT 23-0095)	19-0001	1
8	O-RING (SEE KIT 70-0647)	25-0651	1	28	SWIVEL NUT (SEE KIT 23-0095)	SEE KIT	1
9	SET SCREW (SEE KIT 70-0647)	8-0479	1	29	INLET CONNECTOR (SEE KIT 23-0095)	SEE KIT	1
10	JAM NUT (SEE KIT 70-0647)	SEE KIT	1	30	QC ADAPTER (SEE KIT 70-0499)	SEE KIT	1
11	UNLOADER VALVE BODY (SEE KIT 70-0647)	SEE KIT	1	31	SPRING (SEE KIT 70-0293 AND 70-0499)	SEE KIT	1
12	O-RING (SEE KIT 70-0647)	25-0652	1	32	BALL (SEE KIT 70-0293 AND 70-0499)	SEE KIT	1
13	O-RING (SEE KIT 70-0647)	25-0163	1	33	O-RING (SEE KIT 70-0293 AND 70-0499)	SEE KIT	1
14	SUPPORT RING (SEE KIT 70-0647)	SEE KIT	1	34	HOSE BARB (SEE KIT 70-0499)	46-0869	1
15	O-RING (SEE KIT 70-0647)	25-0655	1	35	OUTLET CONNECTOR	46-1389	1
16	BY PASS JET UNLOADER (SEE KIT 70-0647)	SEE KIT	1	36	O-RING	25-0386	1
17	BULLET (SEE KIT 70-0647)	SEE KIT	1	37	SPRING (SEE KIT 70-0500)	SEE KIT	1
18	O-RING (SEE KIT 70-0647)	25-0656	1	38	CHECKING VALVE (SEE KIT 70-0500)	SEE KIT	1
19	VALVE SEAT (SEE KIT 70-0647)	SEE KIT	1	39	O-RING (SEE KIT 70-0500)	25-0653	1
20	VALVE HOUSING	N/A	1	40	OUTLET BANJO BOLT	8-0594	1

REPLACEMENT KITS

KIT #	DESCRIPTION	ITEMS	# OF ASSEMBLIES
23-0095	KIT - GARDEN HOSE INLET ASSY	27-29	1
70-0293	KIT - INJECTOR REPAIR	31-33	1
70-0499	KIT - OUTLET QC W/CHEM INJ	30-34	1
70-0500	KIT - NON-RETURN VALVE	37-39	1
70-0647	KIT - UNLOADER REBUILD	1-19	1

Manufactured by Mi-T-M
8650 Enterprise Drive, Peosta IA 52068
563-556-7484/ Fax 563-556-1235