



PARTS LIST FOR
CW-3005-OME1/OME3

Motor Horsepower:	10 H.P.
Pump Oil Grade:	Mi-T-M Pump Oil #AW-4085-0016
Pump Oil Capacity:	41 oz.
Nozzle Size:	5.5

This Parts Listing has been compiled for your benefit. You can be assured your Mi-T-M Cold Water Pressure Washer was constructed and designed with quality and performance in mind using over 25 years experience in the pressure washer business. Each component has been rigorously tested to insure the highest level of acceptance.

The contents of this Parts Listing are based on the latest product information available at the time of publication. Mi-T-M reserves the right to make changes in price, color, materials, equipment, specifications or models at any time without notice.

WARNING

THIS IS A PROFESSIONAL HIGH PRESSURE, COLD WATER PRESSURE WASHER. CAUTION SHOULD BE OBSERVED WHEN USING OR REPAIRING THIS UNIT! READ AND FOLLOW THE SAFETY WARNINGS LISTED BELOW BEFORE ATTEMPTING ANY REPAIRS ON THIS PRESSURE WASHER!

SAFETY WARNINGS

1. NEVER alter or modify the equipment. Be sure any accessory items and system components being used will withstand the pressure developed. Use only genuine Mi-T-M parts for repair of your pressure washer. Failure to do so can cause hazardous operating conditions and will VOID warranty.
2. NEVER make adjustments on machinery while the unit is connected to the engine without first removing the ignition cable from the spark plug. Turning over the machinery by hand during adjustment or cleaning might start the engine and machinery with it, causing serious injury to the operator.
3. Know how to stop and bleed pressures quickly. Be thoroughly familiar with controls.
4. Before servicing the unit, turn unit off, relieve the water pressure and allow the unit to cool down. Do not make repairs while the unit is running. Service in a clean, dry, flat area. Block the wheels to prevent the unit from moving. Be especially careful to properly dispose of any flammable materials.
5. After testing the machine, DO NOT leave the pressurized unit unattended. Shut off the unit and release trapped pressure before leaving.

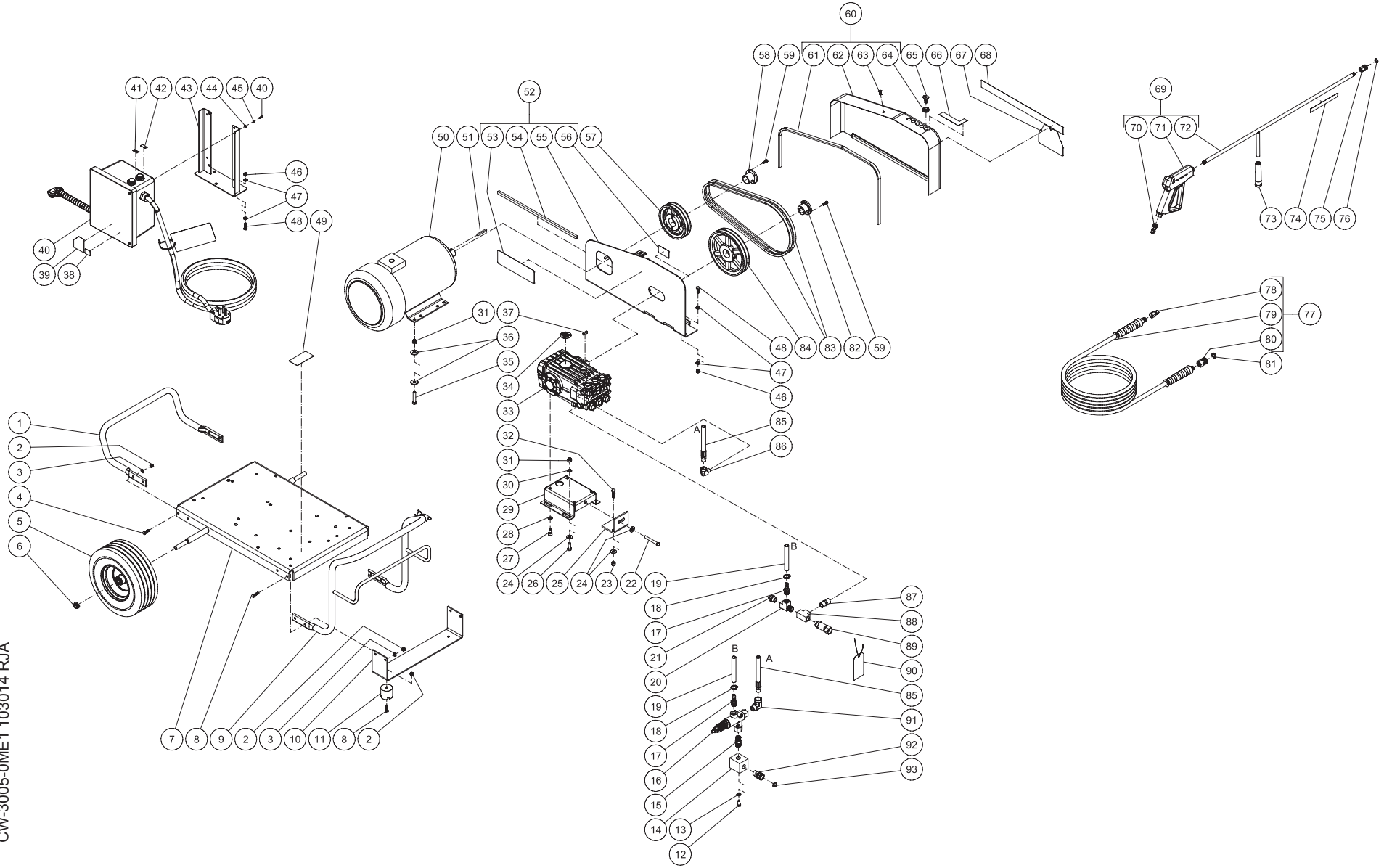
Table of Contents

SPECIFICATIONS.....	3
FRAME ASSEMBLY FOR CW-3005-0ME1	4
FRAME ASSEMBLY FOR CW-3005-0ME3	6
PUMP ASSEMBLY (3-0202)	8
UNLOADER ASSEMBLY (8-0032)	10
ELECTRIC BOX FOR CW-3005-0ME1 (230 VOLT).....	12
WIRING SCHEMATIC FOR CW-3005-0ME1 (230 VOLT).....	14
WIRING DIAGRAM FOR CW-3005-0ME1 (230 VOLT).....	15
ELECTRIC BOX FOR CW-3005-0ME3 (230 VOLT).....	16
WIRING SCHEMATIC FOR CW-3005-0ME3 (230 VOLT).....	18
WIRING DIAGRAM FOR CW-3005-0ME3 (230 VOLT).....	19
ELECTRIC BOX FOR CW-3005-0ME3 (CX-0062 OPTION) (480 VOLT)	20
WIRING SCHEMATIC FOR CW-3005-0ME3 (CX-0062 OPTION) (480 VOLT).....	22
WIRING DIAGRAM FOR CW-3005-0ME3 (CX-0062 OPTION) (480 VOLT)	23

SPECIFICATIONS

MODEL NUMBER	CW-3005-0ME1	CW-3005-0ME3
Operating Pressure (PSI/Bar):	3000/206.8	
High Pressure Nozzle:	5.5	
Water Volume (GPM/lpm):	4.8/18.2	
Motor:	TEFC	
Horsepower	10.0	
Voltage	230	230/460
RPM	1750	
Phase	Single	Three
Amperage	41.5	26.0/13.0
Service Factor	1.00	1.15
Pump:	Belt or Direct Driven, Oil Bath, Triplex Piston	
Oil Type	Mi-T-M Pump Oil #AW-4085-0016	
Oil Capacity (oz./liters)	41/1.2	
Plungers	Ceramic	
Manifold	Forged Brass	
Valves	Stainless Steel	
Unloader:	Pre-set at the factory	
Heat Dump Valve:	Relieves heated water during unloader bypass stage	
Unit Net Weight (lbs/Kg)	329/149	379/172
Unit Shipping Weight (lbs/Kg)	470/213	520/236
Unit Net Dimension (in/cm)	45.5Lx32.5Wx30H/115.5Lx82.5Wx76.5H	
Unit Shipping Dimension (in/cm)	48.5Lx30.5Wx35.5H/123Lx77.5Wx90H	

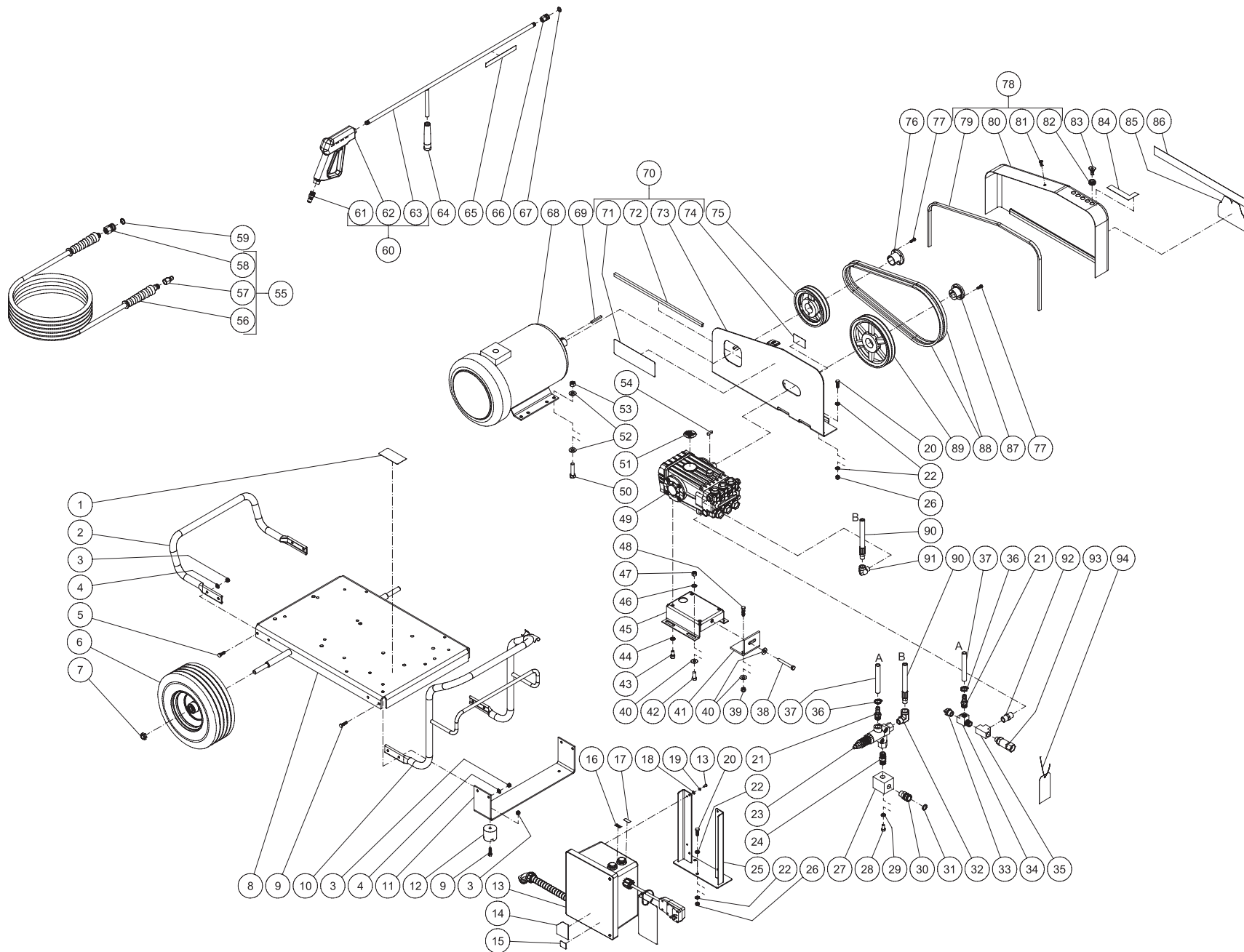
FRAME ASSEMBLY FOR CW-3005-0ME1



CW-3005-0ME1 103014 RJA

FRAME ASSEMBLY							
ITEM	DESCRIPTION	PART #	QTY	ITEM	DESCRIPTION	PART #	QTY
1	REAR HANDLE	7-0105A01	1	50	MOTOR 10 HP 208-230V 1 PHASE	2-0094	1
2	LOCKNUT	30-0157	10	51	KEY	43-0078	1
3	WASHER	28-0003	8	52	BELTGUARD BACK ASSY (INC 53-56)	851-0335	1
4	BOLT	27-0067	4	53	DECAL-WARNING/CAUTION/OPERATION	N/A	1
5	WHEEL	14-0006	2	54	EDGING *(TWO FEET REQUIRED)	33-0020	1
6	LOCKNUT	30-0117	2	55	BELT GUARD BACK	N/A	1
7	BASEPLATE	5-0334A01	1	56	DECAL - BELTGUARD IN PLACE (SEE 71-1044)	N/A	1
8	BOLT	27-0068	6	57	SHEAVE	10-0104	1
9	FRONT HANDLE	7-0102A01	1	58	BUSHING	9-0008	1
10	BRACKET	13-0015A01	1	59	BOLT	27-0015	4
11	ISOLATOR	14-0008	2	60	BELTGUARD COVER ASSY (INC 61-64)	850-0242	1
12	BOLT	27-0116	2	61	EDGING *(FOUR FEET REQUIRED)	33-0020	1
13	LOCKWASHER	29-0008	2	62	BELTGUARD COVER	N/A	1
14	MANIFOLD BLOCK	51-0012	1	63	FASTENER	33-0197	1
15	NIPPLE	24-0031	1	64	GROMMET	33-0001	5
16	UNLOADER	8-0032	1	65	NOZZLE 00055 QC	18-0410	1
17	BARB	23-0045	2	-	NOZZLE 15055 QC	18-0411	1
18	HOSE CLAMP	42-0011	2	-	NOZZLE 25055 QC	18-0412	1
19	HOSE *(TWO FEET REQUIRED)	15-0007	1	-	NOZZLE 40055 QC	18-0413	1
20	TEE	23-0124	1	66	DECAL - NOZZLE (SEE 71-1044)	N/A	1
21	RELIEF VALVE	22-0005	1	67	DECAL - Mi-T-M (SEE 71-1044)	N/A	1
22	BOLT	27-0576	1	68	DECAL - Mi-T-M STRIPE (SEE 71-1044)	N/A	1
23	LOCKNUT	30-0159	2	69	GUN/WAND ASSEMBLY	851-0095	1
24	WASHER	28-0023	7	70	QUICK CONNECT	17-0005	1
25	BRACKET	13-0003A01	1	71	GUN	16-0001	1
26	BOLT	27-0166	4	72	WAND (INCLUDES GRIP & QUICK CONNECT)	16-0418	1
27	BOLT	27-8471	4	73	GRIP	7-0002	1
28	LOCKWASHER	29-0055	4	74	DECAL - RISK OF INJECTION (SEE 71-1044)	N/A	1
29	PUMP BRACKET	5-0101A01	1	75	QUICK CONNECT	17-0001	1
30	WASHER	28-0030	4	76	O-RING	25-0122	1
31	LOCKNUT	30-0161	8	77	HOSE ASSEMBLY	851-0338	1
32	BOLT	27-0118	2	78	QUICK CONNECT	17-0006	1
33	PUMP	3-0202	1	79	HOSE	15-0209	1
34	DECAL - PUMP	N/A	1	80	QC SOCKET	17-0004	1
35	HHCS-ZI GR5 7/16-14 X 2	27-0170	4	81	O-RING	25-0123	1
36	WASHER	28-0024	8	82	BUSHING	9-0017	1
37	KEY	43-0028	1	83	BELT	11-0089	2
38	DECAL - WARNING REMOVAL OF COVER	N/A	1	84	SHEAVE	10-0007	1
39	DECAL - DO NOT SPRAY	N/A	1	85	HIGH PRESSURE HOSE	15-0024	1
40	STARTER ENCLOSURE	CW-A-0008	1	86	ELBOW	24-0105	1
41	DECAL - RUN	34-0250	1	87	NIPPLE	23-0012	1
42	DECAL - STOP	34-0249	1	88	TEE	23-0043	1
43	BRACKET	13-0227A01	1	89	FILTER	19-0206	1
44	WASHER	28-0001	4	90	TAG - WATER SUPPLY INLET (E)	N/A	1
45	STAR WASHER	28-1009	4	91	ELBOW	24-0006	1
46	LOCKNUT	30-0157	7	92	QUICK CONNECT SOCKET	17-0029	1
47	WASHER	28-0003	14	93	O-RING	25-0123	1
48	BOLT	27-0067	7	-	DECAL SET - CW 2400/3000 ELEC	71-1044	1
49	DECAL- SILVER STICKER	N/A	1	*MUST ORDER IN ONE FOOT LENGTHS			

FRAME ASSEMBLY FOR CW-3005-0ME3

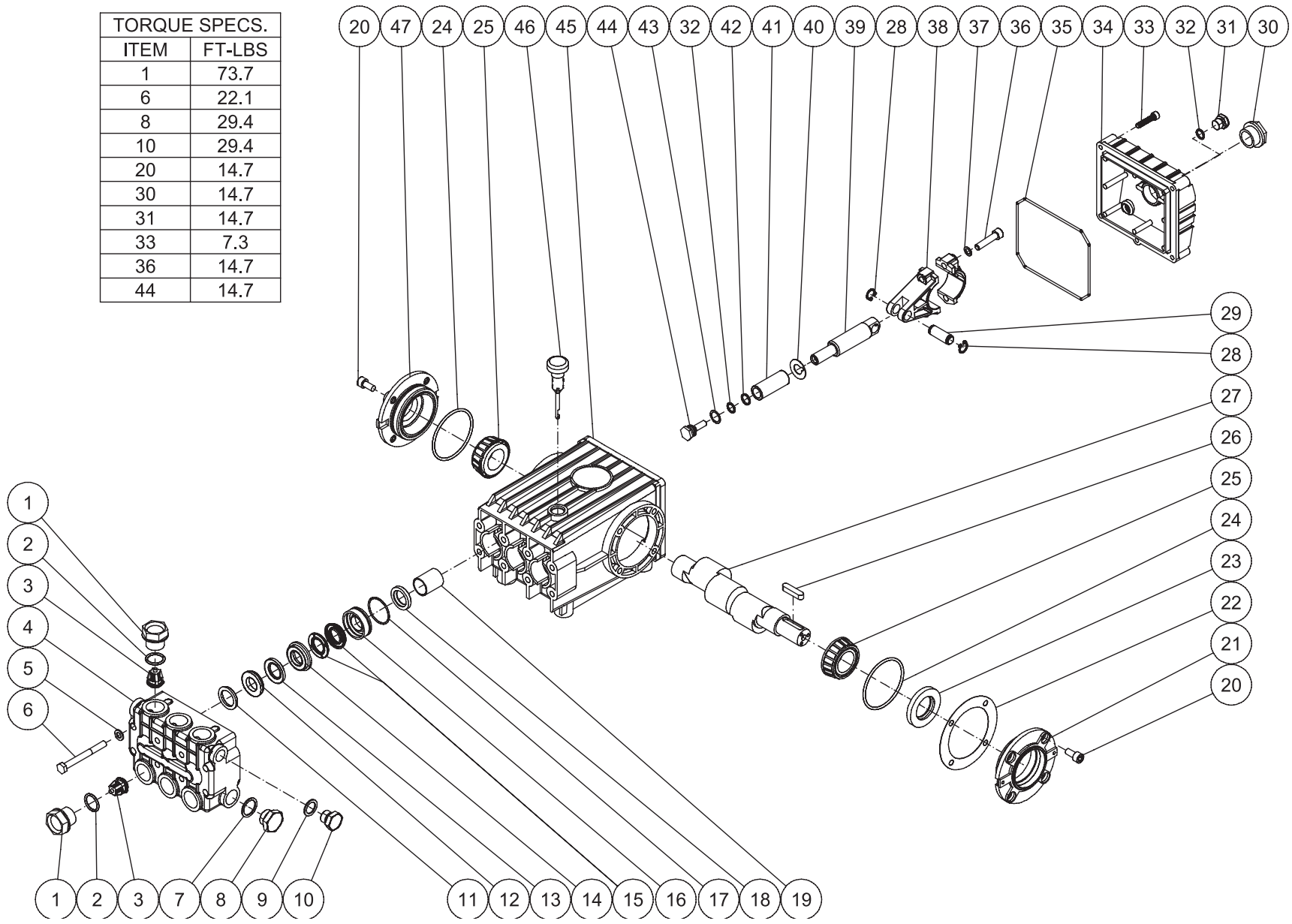


CW-3005-0ME3 102914 RJA

FRAME ASSEMBLY							
ITEM	DESCRIPTION	Mi-T-M #	QTY	ITEM	DESCRIPTION	Mi-T-M #	QTY
1	DECAL- SILVER STICKER	N/A	1	50	BOLT	27-0220	4
2	REAR HANDLE	7-0105A01	1	51	DECAL - PUMP	N/A	1
3	LOCKNUT	30-0157	10	52	WASHER	28-0006	8
4	WASHER	28-0003	8	53	NUT	30-0163	4
5	BOLT	27-0067	4	54	KEY	43-0028	1
6	WHEEL	14-0006	2	55	HOSE ASSEMBLY	851-0338	1
7	LOCKNUT	30-0117	2	56	HOSE	15-0209	1
8	BASEPLATE	5-0334A01	1	57	QUICK CONNECT	17-0006	1
9	BOLT	27-0068	6	58	QC SOCKET	17-0004	1
10	FRONT HANDLE	7-0102A01	1	59	O-RING	25-0123	1
11	BRACKET	13-0015A01	1	60	GUN/WAND ASSEMBLY	851-0095	1
12	ISOLATOR	14-0008	2	61	QUICK CONNECT	17-0005	1
13	STARTER ENCLOSURE	N/A	1	62	GUN	16-0001	1
-	STARTER ENCLOSURE W/ CX-0062 OPTION	N/A	1	63	WAND (INCLUDES GRIP & QUICK CONNECT)	16-0418	1
14	DECAL - DO NOT SPRAY	N/A	1	64	GRIP	7-0002	1
15	DECAL - WARNING REMOVAL OF COVER	N/A	1	65	DECAL - RISK OF INJECTION (SEE 71-1044)	N/A	1
16	DECAL - RUN	N/A	1	66	QUICK CONNECT	17-0001	1
17	DECAL - STOP	N/A	1	67	O-RING	25-0122	1
18	WASHER	28-0001	4	68	MOTOR	2-0095	1
19	STAR WASHER	28-1009	4	69	KEY	43-0078	1
20	BOLT	27-0067	7	70	BELTGUARD BACK ASSY (INC 71-74)	851-0335	1
21	BARB	23-0045	2	71	DECAL-WARNING/CAUTION/OPERATION	N/A	1
22	WASHER	28-0003	14	72	EDGING *(TWO FEET REQUIRED)	33-0020	1
23	UNLOADER	8-0032	1	73	BELT GUARD BACK	N/A	1
24	NIPPLE	24-0031	1	74	DECAL - BELTGUARD IN PLACE (SEE 71-1044)	N/A	1
25	BRACKET	13-0227A01	1	75	SHEAVE	10-0104	1
26	LOCKNUT	30-0157	7	76	BUSHING	9-0008	1
27	MANIFOLD BLOCK	51-0012	1	77	BOLT	27-0015	4
28	BOLT	27-0116	2	78	BELTGUARD COVER ASSY (INC 79-82)	850-0242	1
29	LOCKWASHER	29-0008	2	79	EDGING *(FOUR FEET REQUIRED)	33-0020	1
30	QUICK CONNECT SOCKET	17-0029	1	80	BELTGUARD COVER	6-0064A01	1
31	O-RING	25-0123	1	81	FASTENER	33-0197	1
32	ELBOW	24-0006	1	82	GROMMET	33-0001	5
33	RELIEF VALVE	22-0005	1	83	NOZZLE 00055 QC	18-0410	1
34	TEE	23-0124	1	-	NOZZLE 15055 QC	18-0411	1
35	TEE	23-0043	1	-	NOZZLE 25055 QC	18-0412	1
36	HOSE CLAMP	42-0011	2	-	NOZZLE 40055 QC	18-0413	1
37	HOSE *(TWO FEET REQUIRED)	15-0007	2	84	DECAL - NOZZLE	N/A	1
38	BOLT	27-0576	1	85	DECAL - Mi-T-M	N/A	1
39	LOCKNUT	30-0159	2	86	DECAL - Mi-T-M STRIPE (SEE 71-1044)	N/A	1
40	WASHER	28-0023	7	87	BUSHING	9-0017	1
41	BRACKET	13-0003A01	1	88	BELT	11-0089	2
42	BOLT	27-0166	4	89	SHEAVE	10-0007	1
43	BOLT	27-8471	4	90	HIGH PRESSURE HOSE *(TWO FEET REQUIRED)	15-0024	1
44	LOCKWASHER	29-0055	4	91	ELBOW	24-0105	1
45	PUMP BRACKET	5-0101A01	1	92	NIPPLE	23-0012	1
46	WASHER	28-0030	4	93	FILTER	19-0206	1
47	LOCKNUT	30-0161	4	94	TAG - WATER SUPPLY INLET (E)	N/A	1
48	BOLT	27-0118	2	-	DECAL SET	71-1044	1
49	PUMP	3-0202	1	*MUST ORDER IN ONE FOOT LENGTHS			

PUMP ASSEMBLY (3-0202)

TORQUE SPECS.	
ITEM	FT-LBS
1	73.7
6	22.1
8	29.4
10	29.4
20	14.7
30	14.7
31	14.7
33	7.3
36	14.7
44	14.7

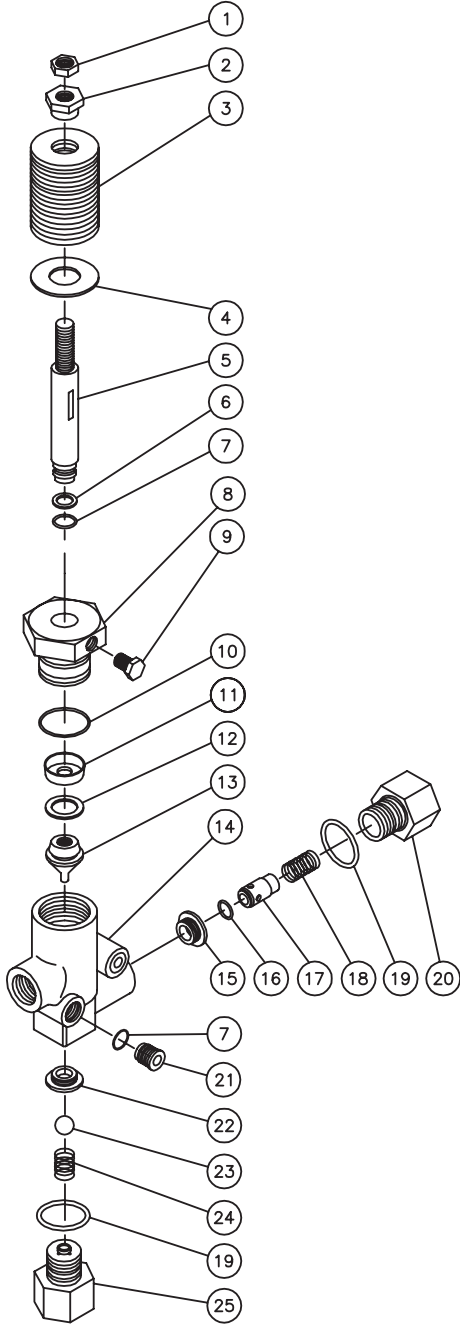


3-0202_3-0203 082713

PUMP ASSEMBLY							
ITEM	DESCRIPTION	PART #	QTY	ITEM	DESCRIPTION	PART #	QTY
1	VALVE CAP	46-0889	6	25	BEARING	48-0012	2
2	O-RING	25-0012	6	26	KEY	43-0048	1
3	VALVE (SEE KIT 70-0009)	SEE KIT	6	27	CRANKSHAFT	N/A	1
4	MANIFOLD	46-0890	1	28	RETAINING RING	46-0103	6
5	WASHER	28-1039	8	29	CONNECTING ROD PIN	43-0032	3
6	BOLT	27-8185	8	30	OIL LEVEL INDICATOR	46-0114	1
7	WASHER	28-1038	2	31	PLUG	39-0017	1
8	PLUG	39-0019	2	32	O-RING	25-0014	4
9	WASHER	28-1002	2	33	BOLT	27-8404	5
10	PLUG	39-0018	2	34	CRANKCASE OPEN COVER	46-0295	1
11	HEAD RING (SEE KIT 70-0030 AND 852-0122)	SEE KIT	3	35	O-RING	25-0339	1
12	V-PACKING SUPPORT (SEE KIT 70-0147 AND 852-0122)	SEE KIT	3	36	BOLT	27-8435	6
13	O-RING (SEE KIT 70-0147 AND 70-0148 AND 852-0122)	SEE KIT	3	37	LOCKWASHER	29-0154	6
14	HIGH PRESSURE INTERMEDIATE SEAL RETAINER (SEE KIT 70-0148)	SEE KIT	3	38	CONNECTING ROD	46-0051	3
15	PRESSURE SEAL (SEE KIT 70-0147 AND 852-0122)	SEE KIT	3	39	PISTON ROD	46-0056	3
16	LOW PRESSURE SEAL RETAINER	46-0057	3	40	SLINGER WASHER	46-0146	3
17	O-RING (SEE KIT 852-0122)	SEE KIT	3	41	PLUNGER	46-0052	3
18	OIL SEAL	26-0047	3	42	BACK-UP RING	46-0109	3
19	BUSHING	9-0029	3	43	WASHER	28-0400	3
20	BOLT	27-8431	8	44	NUT / PISTON	46-0069	3
21	CRANKCASE COVER	46-0296	1	45	CRANKCASE	46-0047	1
22	SHIM	46-0113	1	46	OIL DIP STICK	46-0144	1
23	OIL SEAL	26-0049	1	47	CRANKCASE COVER	46-0336	1
24	O-RING	25-0013	2				

REPLACEMENT KITS				
KIT#	DESCRIPTION	ITEMS	# OF ASSEMBLIES	# OF CYLINDERS
70-0009	VALVES	3	6	3
70-0030	HEAD RING	11	3	3
70-0147	V-PACKING	12, 13, 15	3	3
70-0148	INTERMEDIATE RETAINER	13, 14	3	3
852-0122	V-PACKING ASSY	11-13, 15, 17	3	3

UNLOADER ASSEMBLY (8-0032)

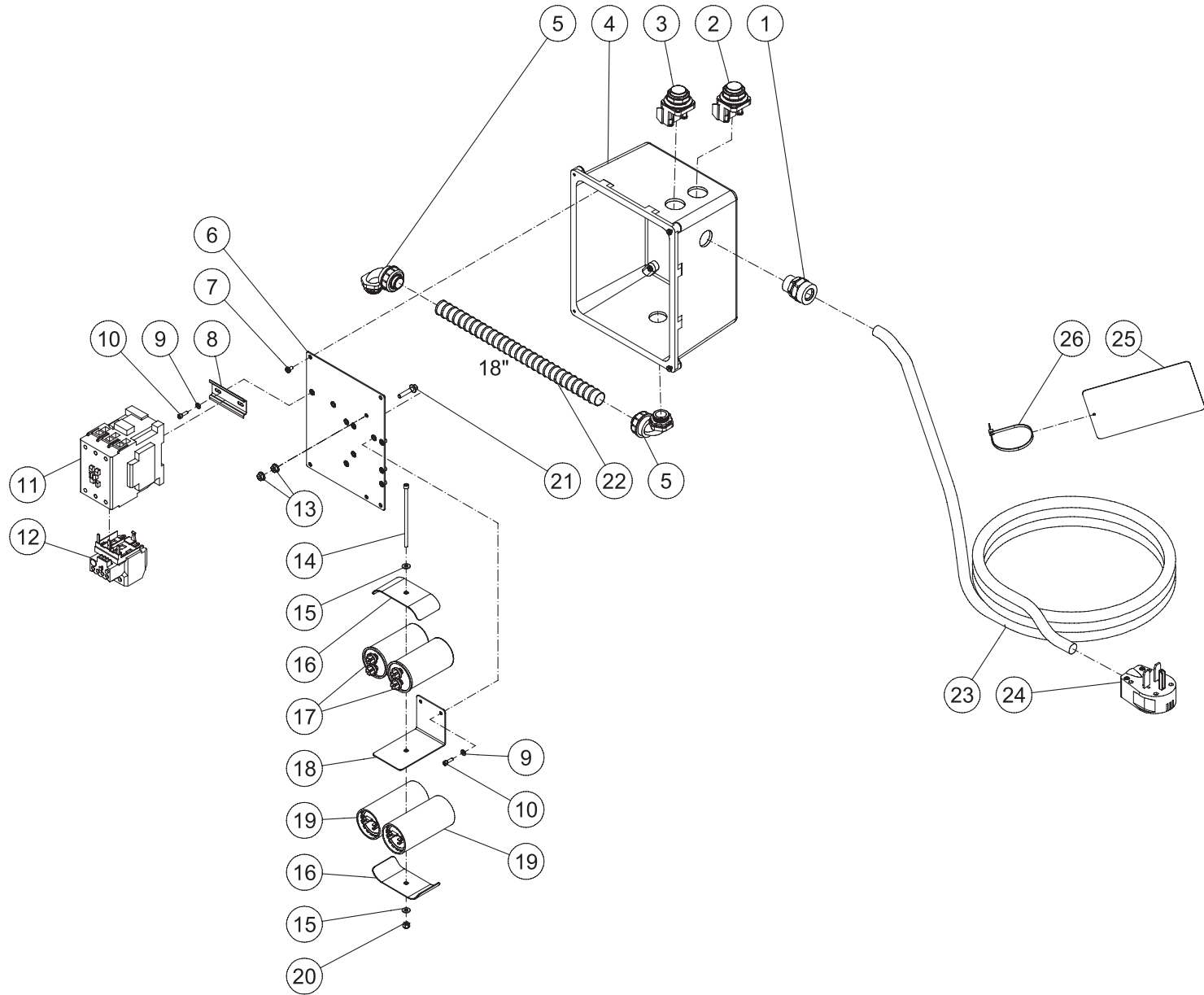


8-0032 061113

8-0032 061113 MLK			
UNLOADER ASSEMBLY (8-0032)			
REF.#	DESCRIPTION	PART #	QTY.
1	LOCKNUT	30-3058	1
2	ADJUSTING NUT	8-0089	1
3	SPRING WASHERS - ORANGE	8-0009	15
4	WASHER	28-0250	1
5	VALVE STEM	8-0037	1
6	BACKUP RING (SEE KIT 70-0044)	8-0038	1
7	O-RING (SEE KIT 70-0044)	25-0009	5
8	VALVE CAP	8-0036	1
9	SET SCREW	8-0084	1
10	O-RING (SEE KIT 70-0044)	25-0008	1
11	CUP (SEE KIT 70-0044)	8-0034	1
12	BACK-UP RING (SEE KIT 70-0044)	8-0040	1
13	PISTON	8-0039	1
14	VALVE BODY	8-0164	1
15	OUTLET SEAT	8-0006	1
16	O-RING (SEE KIT 70-0044)	25-0011	1
17	OUTLET VALVE	8-0004	1
18	SPRING	49-0016	1
19	O-RING (SEE KIT 70-0044)	25-0010	2
20	OUTLET RETAINER	8-0003	1
21	BRASS PLUG	8-0011	4
22	VALVE SEAT	8-0005	1
23	BALL	8-0041	1
24	SPRING	49-0015	1
25	INLET RETAINER	8-0165	1

REPLACEMENT KITS			
Mi-T-M KIT#	DESCRIPTION	ITEMS	QTY
70-0044	UNLOADER KIT	6, 7, 10-12, 16, 19	2, 5, 1, 1, 1, 1, 2

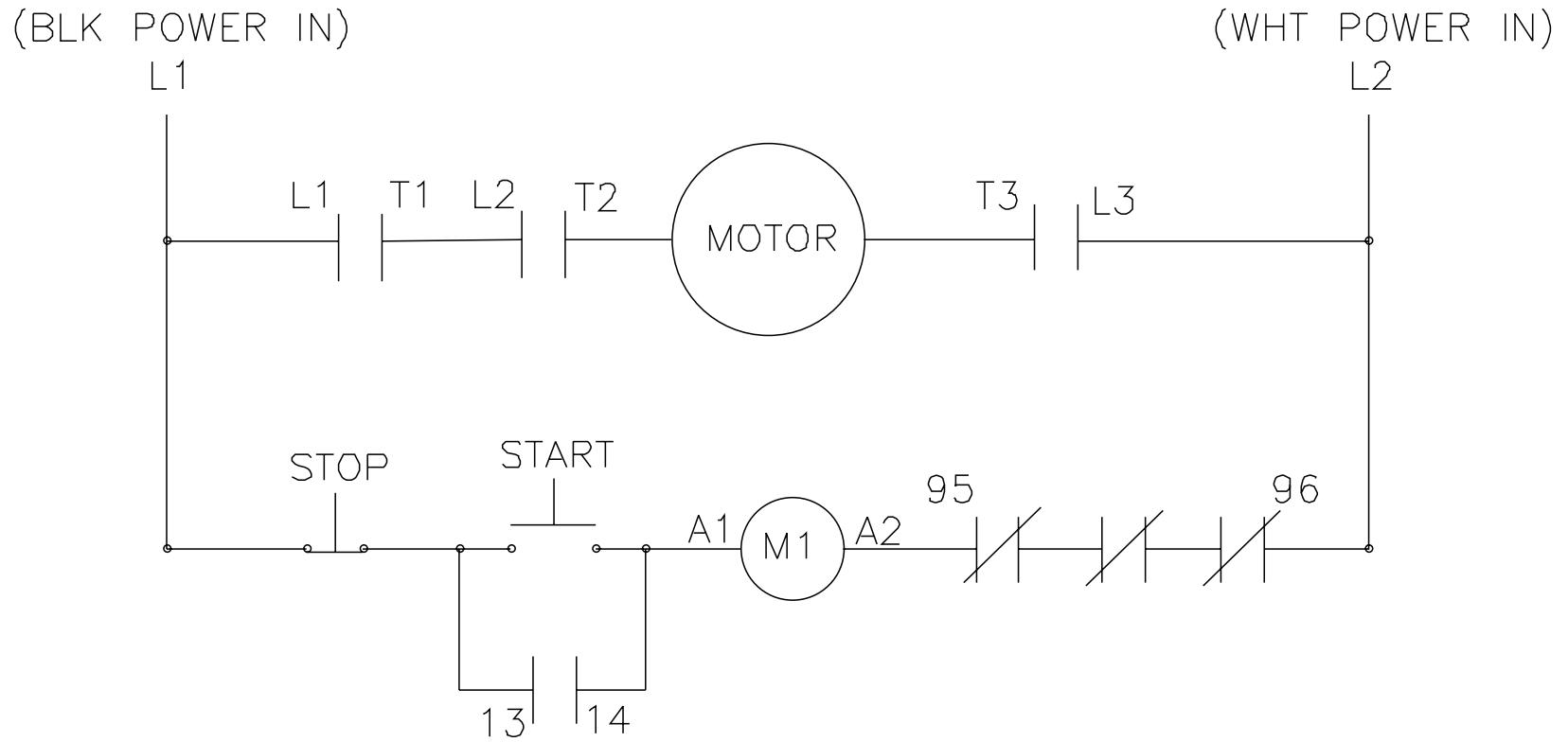
ELECTRIC BOX FOR CW-3005-0ME1 (230 VOLT)



CW-A-0008 120213 RJA

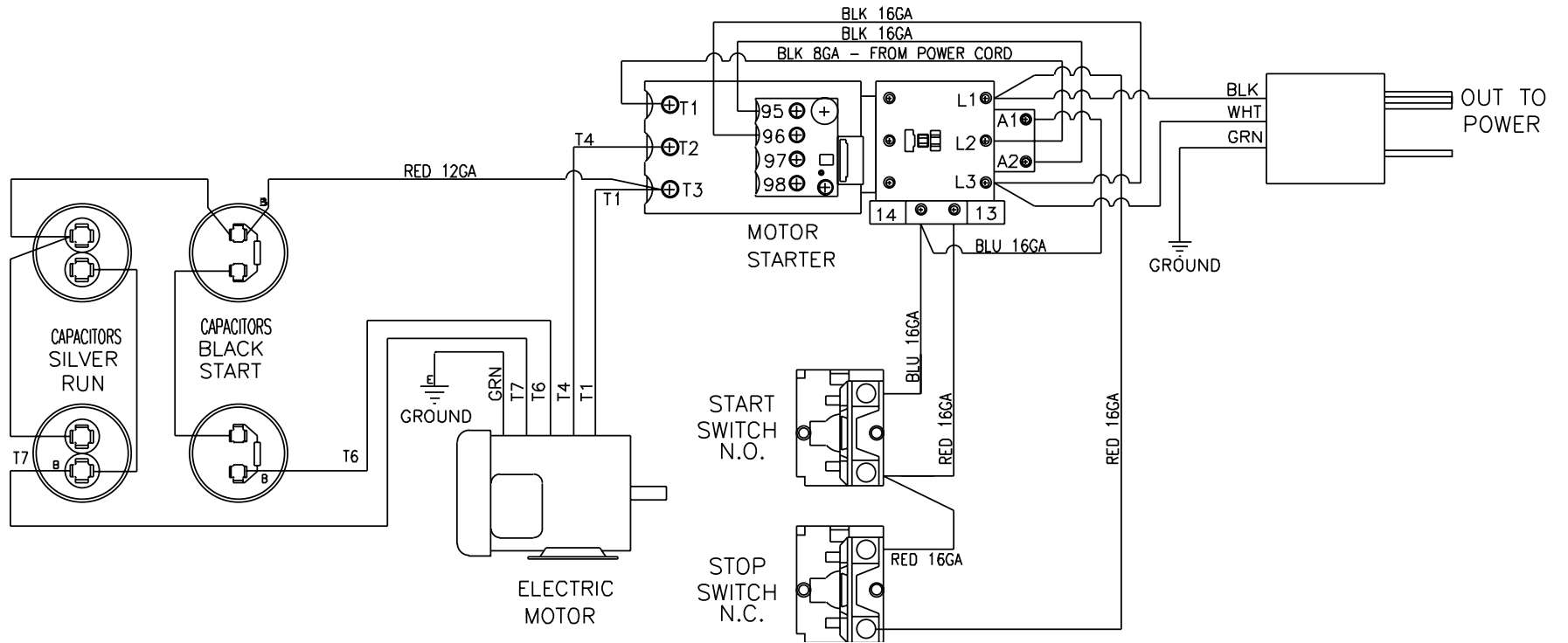
CW-A-0008 120213 RJA			
ELECTRIC BOX ASSEMBLY			
ITEM	TITLE	Mi-T-M #	QTY
1	BUSHING	32-0040	1
2	SWITCH - RED	32-0306	1
3	SWITCH - GREEN	32-0305	1
4	ELECTRIC BOX	32-1119	1
5	CONDUIT ELBOW	32-0487	2
6	ELECTRIC PANEL	20-1293	1
7	BOLT	N/A	4
8	DIN RAIL *(ONE FOOT REQUIRED)	32-0316	1
9	WASHER	28-0010	4
10	SCREW	27-8835	4
11	CONTACTOR	32-0700	1
12	OVERLOAD	32-0490	1
13	NUT	30-3022	2
14	BOLT	27-0759	1
15	WASHER	28-0001	2
16	CAPACITOR CLAMP	20-0467	2
17	CAPACITOR	32-0519	2
18	BRACKET - CAPACITORS	20-0556A06	1
19	CAPACITOR	32-0516	2
20	NUT	30-0154	1
21	BOLT	27-8898	1
22	CONDUIT FLEX *(TWO FEET REQUIRED)	32-0486	1
23	CORD	32-0021	1
24	PLUG	32-0012	1
25	TAG - WARNING RISK OF ELECTROCUTION	34-1035	1
26	CABLE TIE	33-0022	1
*MUST ORDER IN ONE FOOT LENGHTS			

WIRING SCHEMATIC FOR CW-3005-0ME1 (230 VOLT)

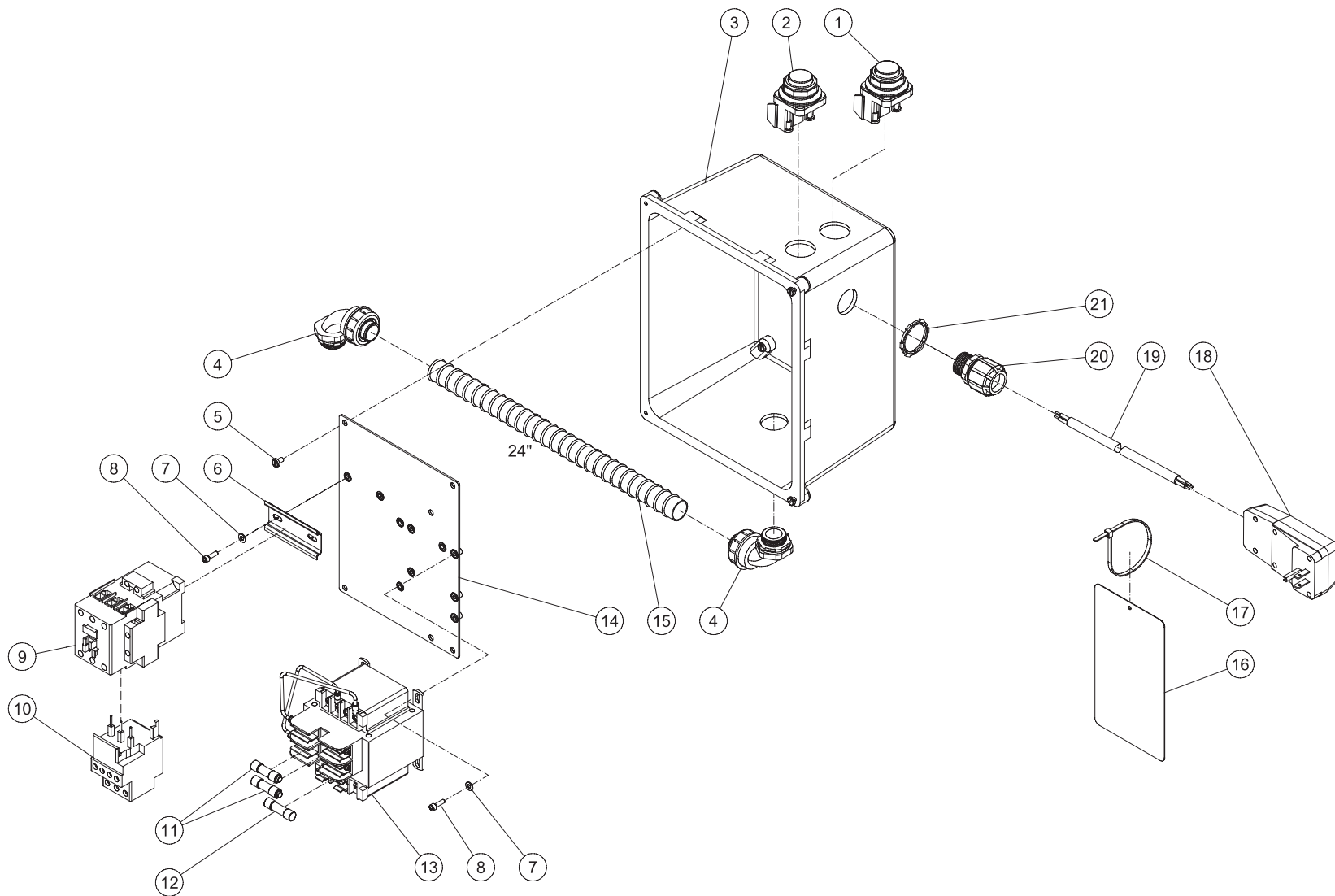


CW-WD-0005-S-120000-GJH

WIRING DIAGRAM FOR CW-3005-0ME1 (230 VOLT)



ELECTRIC BOX FOR CW-3005-0ME3 (230 VOLT)



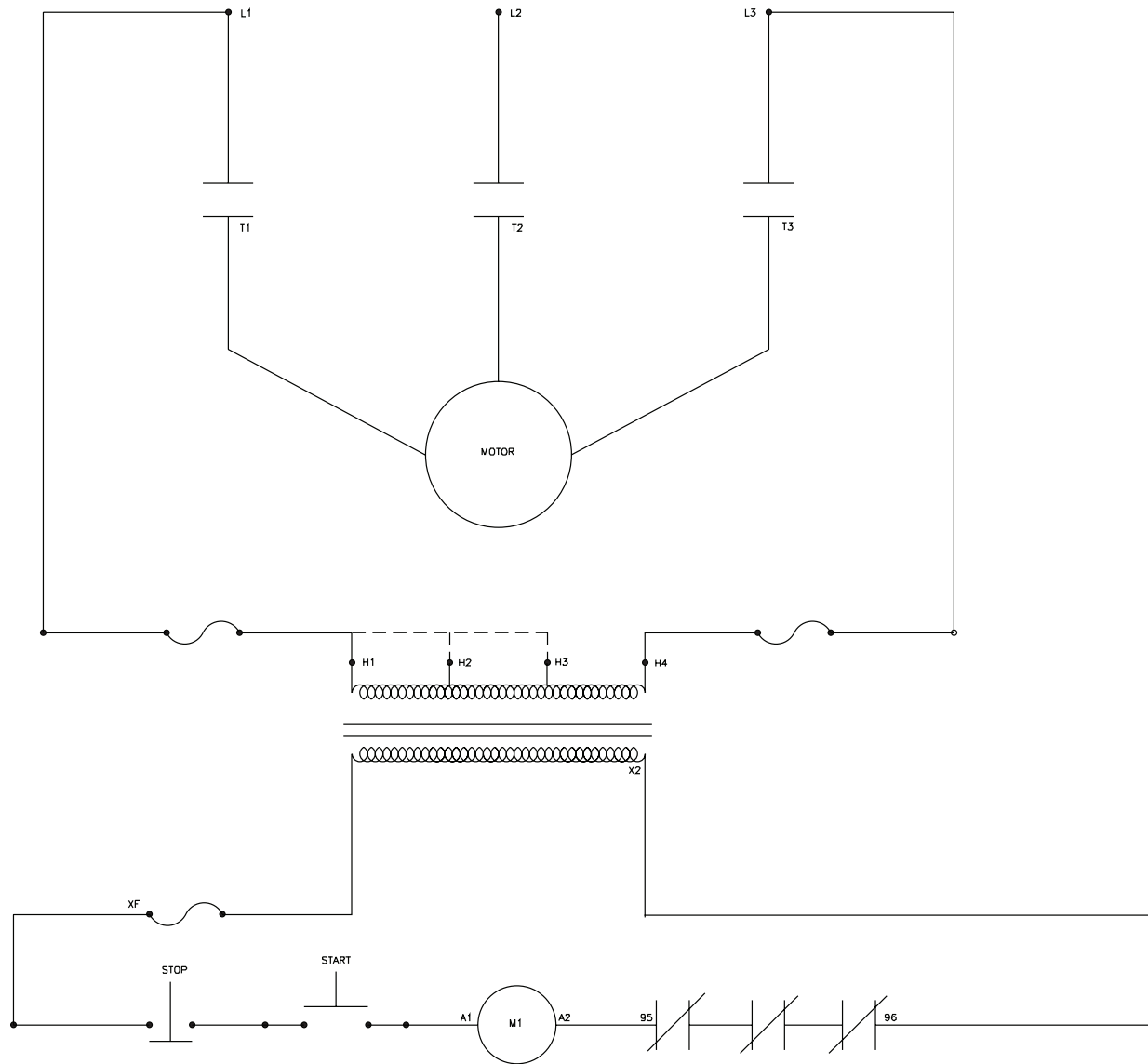
C W-A-0006-120413-RJA

ELECTRIC BOX ASSEMBLY

ITEM	TITLE	Mi-T-M #	QTY
1	SWITCH - RED	32-0306	1
2	SWITCH - GREEN	32-0305	1
3	ELECTRIC BOX	32-1119	1
4	CONDUIT ELBOW	32-0487	2
5	BOLT (W/ BOX)	N/A	1
6	DIN RAIL *(ONE FOOT REQUIRED)	32-0316	1
7	WASHER	28-0010	6
8	SCREW	27-8835	6
9	CONTACTOR - 30AMP	32-0597	1
10	OVERLOAD	32-1074	1
11	FUSE	32-0469	2
12	FUSE	32-0619	1
13	TRANSFORMER	32-0618	1
14	ELECTRIC PANEL	20-1293	1
15	CONDUIT FLEX *(TWO FEET REQUIRED)	32-0486	1
16	TAG - WARNING RISK OF ELECTROCUTION	34-1035	1
17	CABLE TIE	33-0022	1
18	PLUG	32-0647	1
19	CORD	32-0123	1
20	CORD RELIEF	9-0048	1
21	NUT	32-0515	1

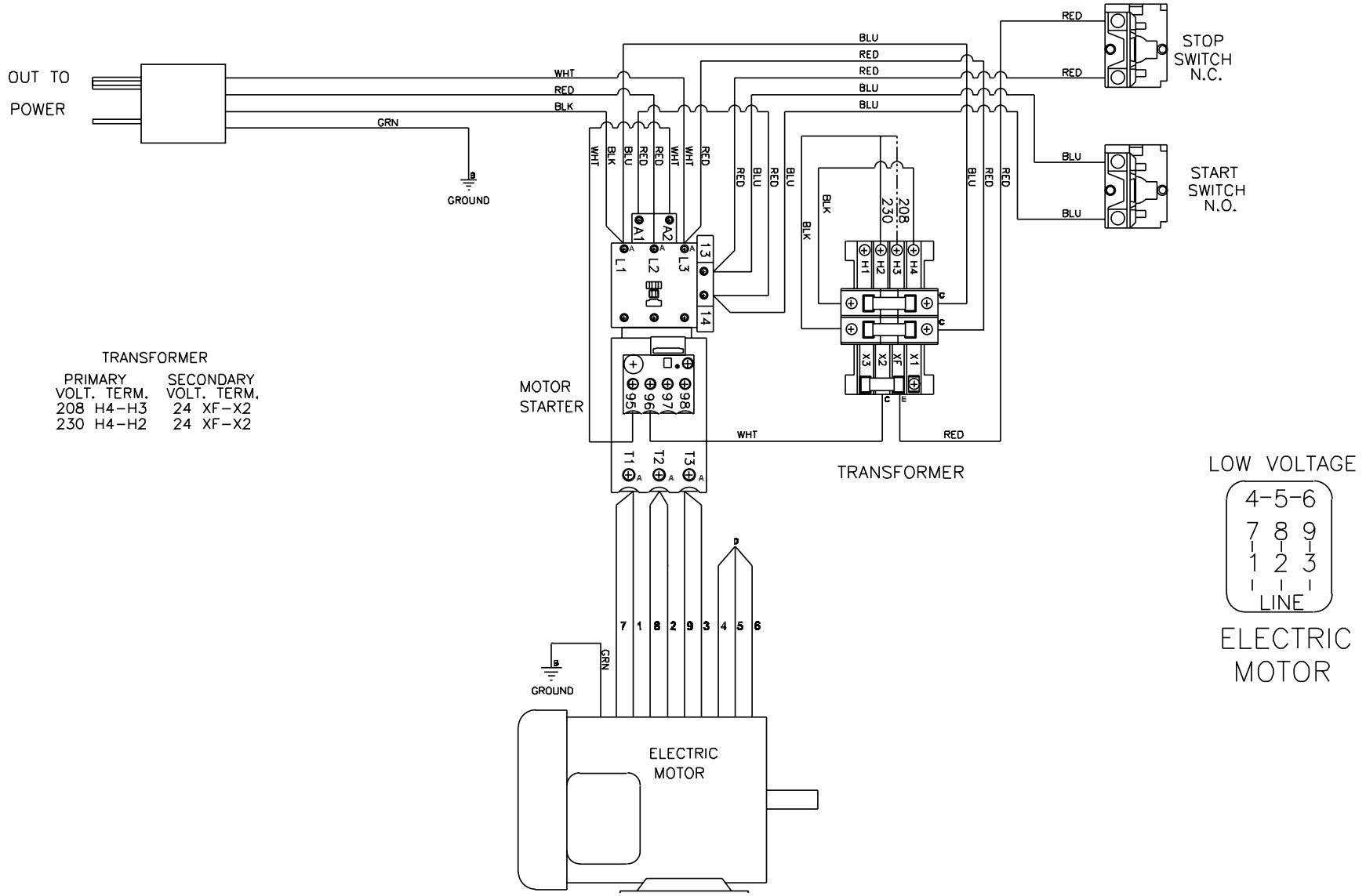
*MUST ORDER IN ONE FOOT LENGTHS

WIRING SCHEMATIC FOR CW-3005-0ME3 (230 VOLT)



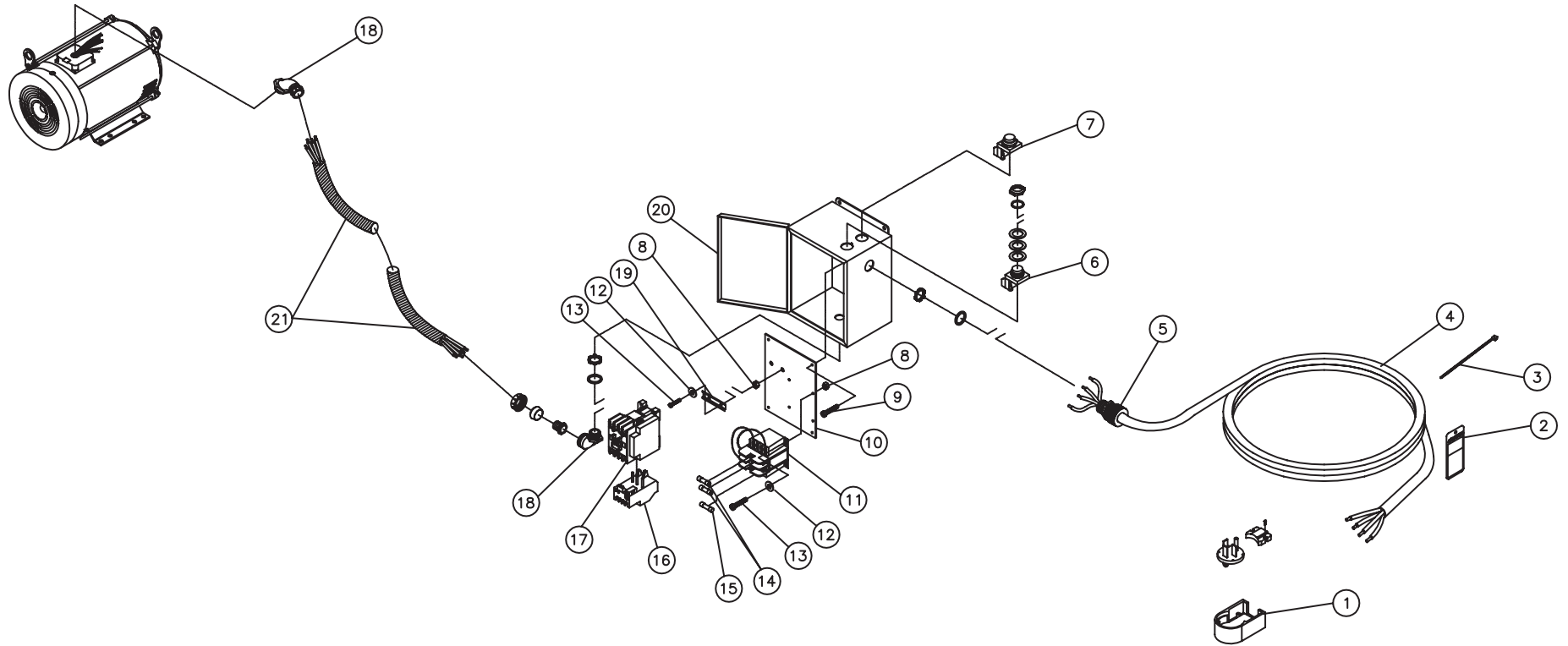
CW-WD-0001-112700-RD

WIRING DIAGRAM FOR CW-3005-0ME3 (230 VOLT)



CW-WD-0002-070501-EDW

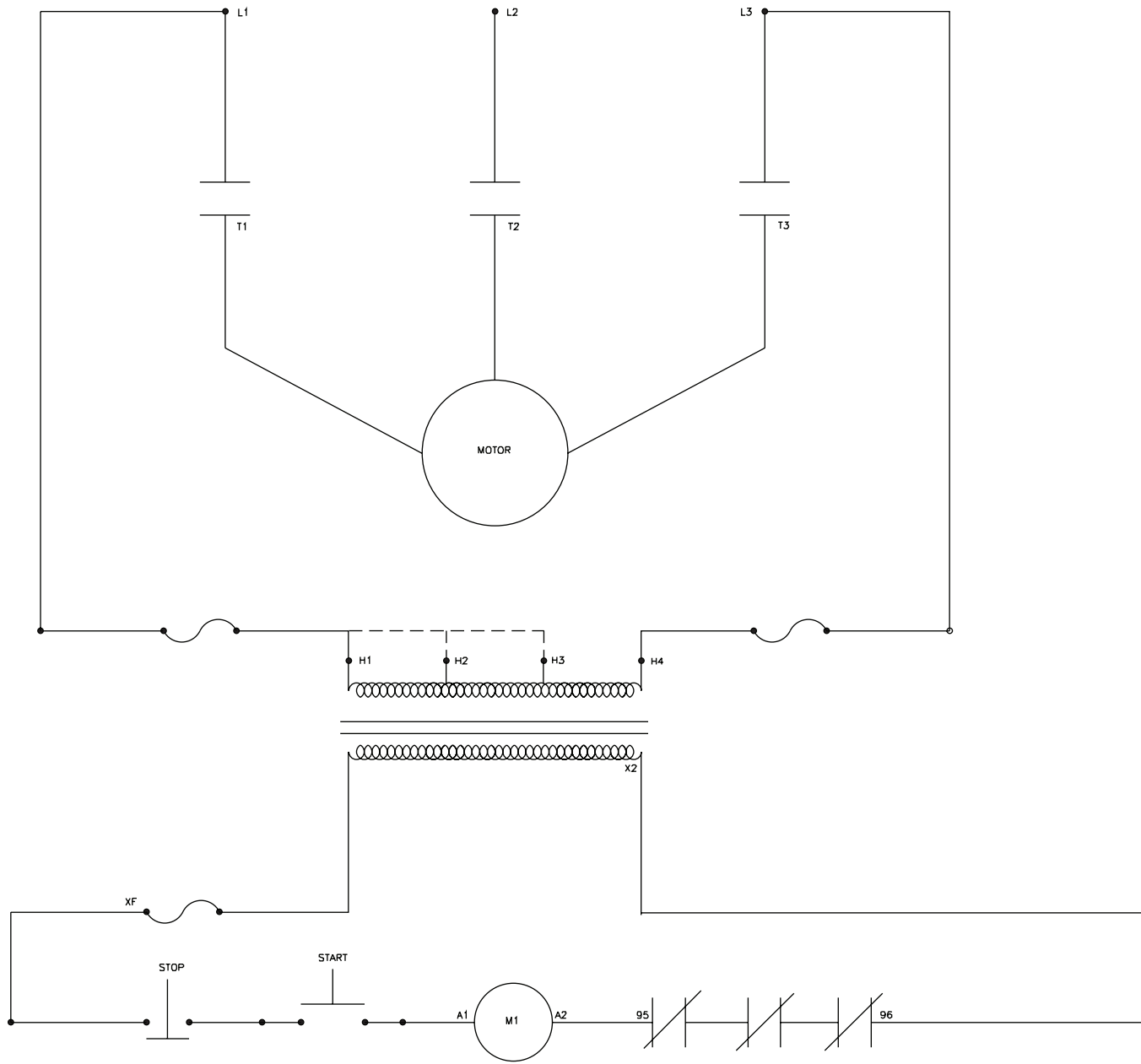
ELECTRIC BOX FOR CW-3005-0ME3 (CX-0062 OPTION) (480 VOLT)



C W-A-0007-092904

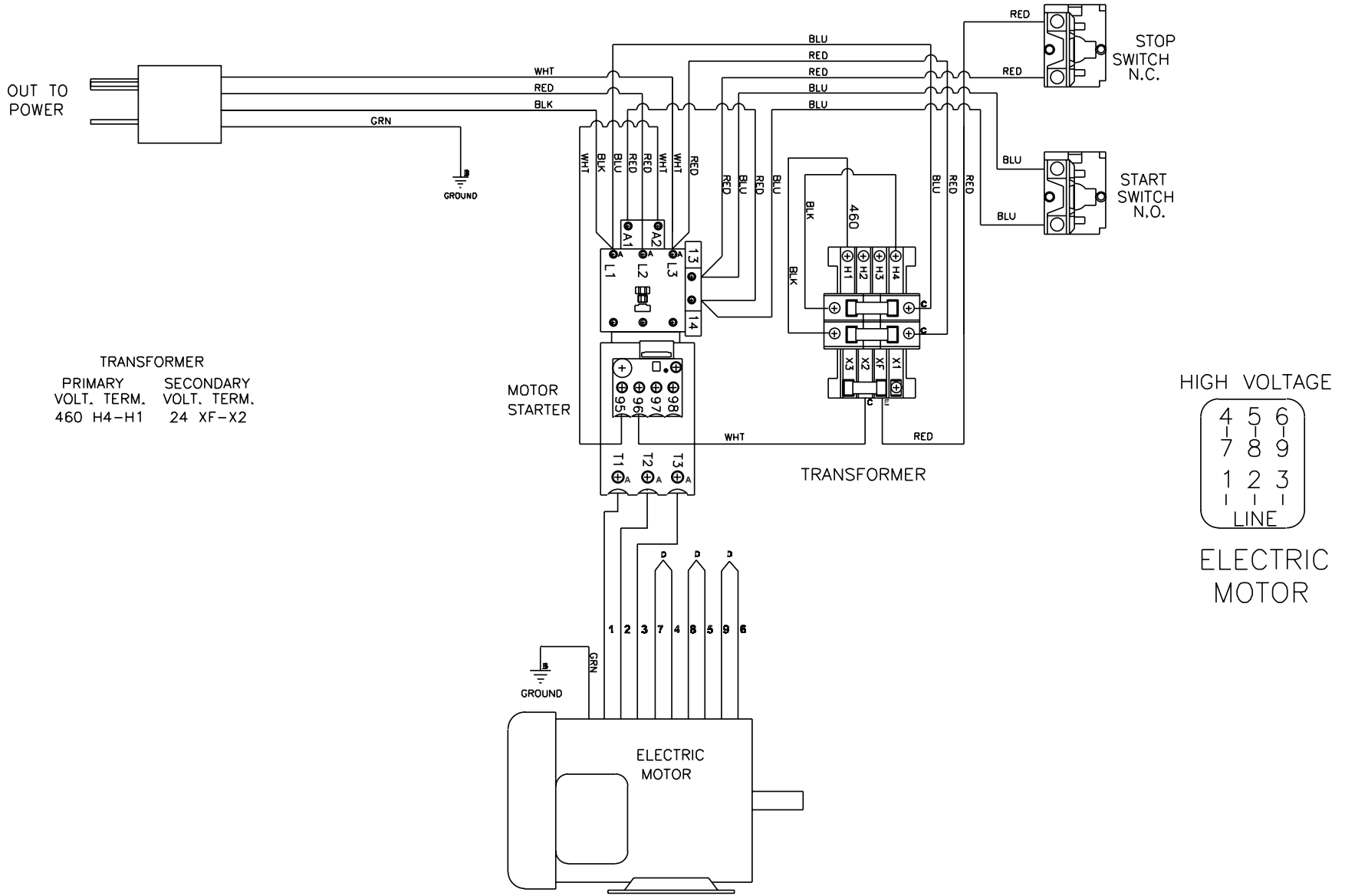
ELECTRIC BOX FOR CW-3005-0ME3 (CX-0062 OPTION) (480 VOLT)								
REF. #	DESCRIPTION	PART #	QTY.		REF. #	DESCRIPTION	PART #	QTY.
1	Plug	32-0146	1		12	Washer	28-0010	6
2	Tag- Risk of Electrocutation	34-1035	1		13	Bolt	27-8927	6
3	Cable Tie	33-0022	1		14	Fuse- 1/4 AMP	32-0325	2
4	Cord *(Ten Feet Required)	32-0023	1		15	Fuse- 3 AMP	32-0323	1
5	Cord Strain Relief	9-0046	1		16	Overload Relay	32-0482	1
6	Stop Switch- Red	32-0306	1		17	Contactactor	32-0327	1
7	Start Swich- Green	32-0305	1		18	Conduit	32-0487	2
8	Locknut	30-8152	6		19	Din Rail *(One Foot Required)	32-0316	1
9	Bolt (See 32-0455)	N/A Sep.	4		20	Electrical Box	32-0455	1
10	Panel	32-0456	1		21	Conduit *(Two Feet Required)	32-0486	1
11	Transformer	32-0313	1		*Must Order in One Foot Lengths			

WIRING SCHEMATIC FOR CW-3005-0ME3 (CX-0062 OPTION) (480 VOLT)



CW-WD-0001-112700-RD

WIRING DIAGRAM FOR CW-3005-0ME3 (CX-0062 OPTION) (480 VOLT)



CW-WD-0003-122700-EDW

