



PARTS LIST FOR  
***CD-2003-3MHH***

ENGINE OIL GRADE:	SAE10W-30
ENGINE OIL CAPACITY:	20 oz.
PUMP OIL GRADE:	Mi-T-M PUMP OIL #AW-4085-0016
PUMP OIL CAPACITY:	9.81 oz.
NOZZLE SIZE:	3.5

This Parts Listing has been compiled for your benefit. You can be assured your Mi-T-M Cold Water Pressure Washer was constructed and designed with quality and performance in mind using over 25 years experience in the pressure washer business. Each component has been rigorously tested to insure the highest level of acceptance.

The contents of this Parts Listing are based on the latest product information available at the time of publication. Mi-T-M reserves the right to make changes in price, color, materials, equipment, specifications or models at any time without notice.

**WARNING**

THIS IS A PROFESSIONAL HIGH PRESSURE, COLD WATER PRESSURE WASHER. CAUTION SHOULD BE OBSERVED WHEN USING OR REPAIRING THIS UNIT! READ AND FOLLOW THE SAFETY WARNINGS LISTED BELOW BEFORE ATTEMPTING ANY REPAIRS ON THIS PRESSURE WASHER!

**SAFETY WARNINGS**

1. NEVER alter or modify the equipment. Be sure any accessory items and system components being used will withstand the pressure developed. Use only genuine Mi-T-M parts for repair of your pressure washer. Failure to do so can cause hazardous operating conditions and will VOID warranty.
2. NEVER make adjustments on machinery while the unit is connected to the engine without first removing the ignition cable from the spark plug. Turning over the machinery by hand during adjustment or cleaning might start the engine and machinery with it, causing serious injury to the operator.
3. Know how to stop and bleed pressures quickly. Be thoroughly familiar with controls.
4. Before servicing the unit, turn unit off, relieve the water pressure and allow the unit to cool down. Do not make repairs while the unit is running. Service in a clean, dry, flat area. Block the wheels to prevent the unit from moving. Be especially careful to properly dispose of any flammable materials.
5. After testing the machine, DO NOT leave the pressurized unit unattended. Shut off the unit and release trapped pressure before leaving.

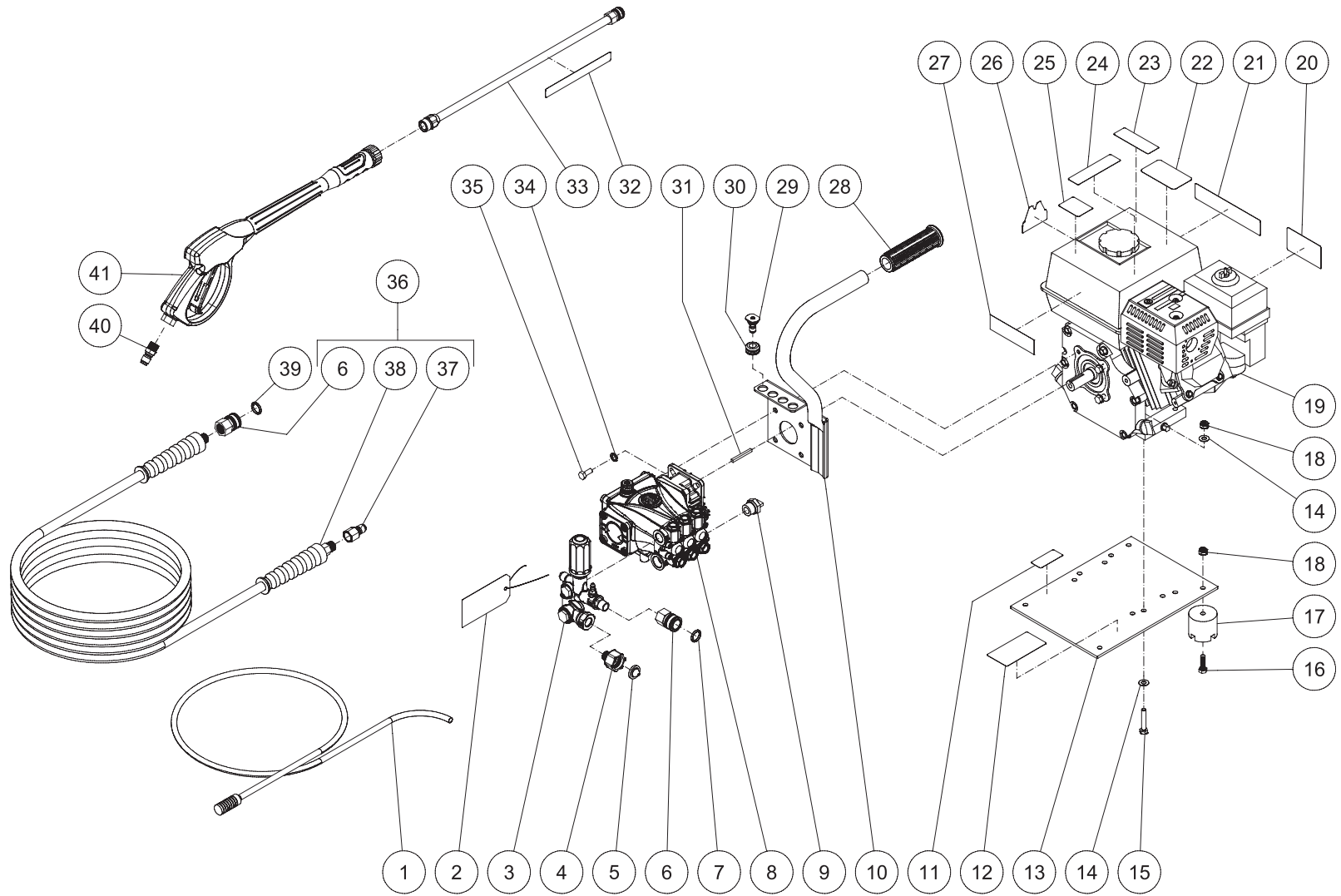
**Table of Contents**

**SPECIFICATIONS.....3**  
**FRAME ASSEMBLY FOR CD-2003-3MHH.....4**  
**PUMP ASSEMBLY (3-0360) .....6**  
**UNLOADER ASSEMBLY (8-0625) .....8**

## SPECIFICATIONS

MODEL NUMBER	CD-2003-3MHH
Operating Pressure (PSI/Bar):	2000/138
High Pressure Nozzle:	3.5
Water Volume (GPM/lpm):	2.7/10.2
Engine:	Honda
Horsepower	6.5
Engine Type	4 Stroke, Overhead Valve, Single Cylinder
Oil Type	SAE10W-30
Oil Capacity (oz./liters)	20/.6
Low Oil Protection	Oil Alert™
Fuel Type	Unleaded Gasoline 86 Octane Minimum
Fuel Capacity (gallon/ liters)	.95/3.6
Starting	Recoil
Maximum No Load RPM	3600 (+/- 100) RPM
Pump:	Direct Driven, Oil Bath, Triplex Piston
Oil Type	Mi-T-M Pump Oil #AW-4085-0016
Oil Capacity (oz./liters)	9.81/0.29
Plungers	Ceramic
Manifold	Forged Brass
Valves	Stainless Steel
Heat Dump Valve	Relieves heated water during unloader bypass stage
Unloader:	Preset
Detergent Injector:	Adjustable low pressure down stream from pump
Unit Net Weight (lbs/Kg)	70/32
Unit Shipping Weight (lbs/Kg)	83/37.5
Unit Net Dimension (in/cm)	18.5Lx14.5Wx20H/47Lx37Wx51H
Unit Shipping Dimension (in/cm)	28.5Lx19.5Wx22H/72Lx49.5Wx55.5H

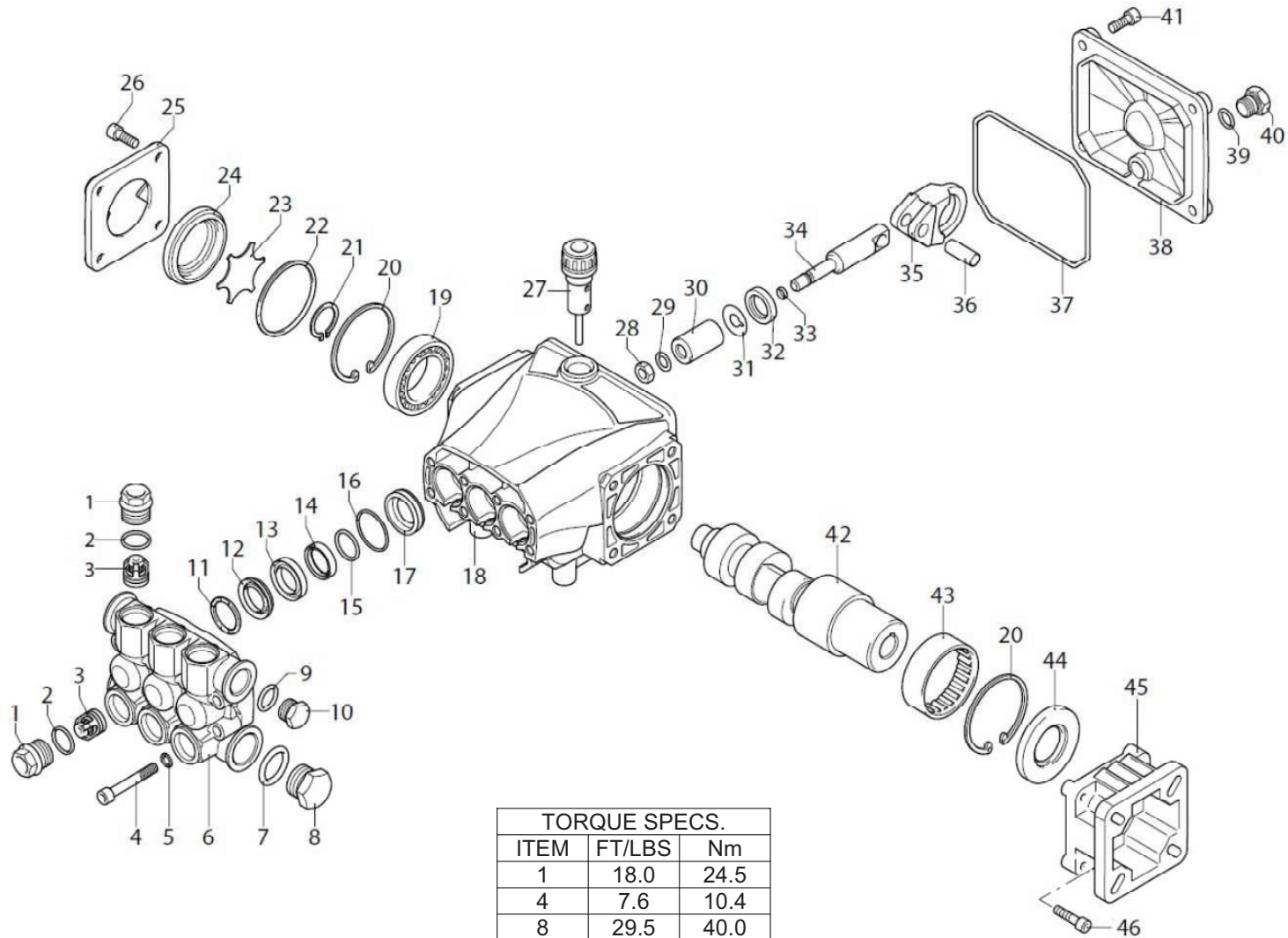
# FRAME ASSEMBLY FOR CD-2003-3MHH



CD-2003-3MHH-093013-JPS

CD-2003-3MHH 0930013 JPS			
FRAME ASSEMBLY			
ITEM	DESCRIPTION	Mi-T-M #	QTY
1	DETERGENT HOSE	19-0233	1
2	TAG - WATER SUPPLY INLET (E)	34-0097	1
3	UNLOADER	8-0625	1
4	SWIVEL GARDEN HOSE	23-0096	1
5	FILTER	19-0001	1
6	QC SOCKET	17-0004	2
7	O-RING	25-0123	1
8	PUMP	3-0360	1
9	RELIEF VALVE	22-0005	1
10	HANDLE	7-0120A01	1
11	DECAL - PUMP INSTRUCTIONS (SEE 71-1014)	N/A	1
12	DECAL - SILVER STICKER	N/A	1
13	BASEPLATE	5-0086A01	1
14	WASHER	28-0003	8
15	BOLT	27-0070	4
16	BOLT	27-0068	4
17	ISOLATOR	14-0008	4
18	LOCKNUT	30-0157	8
19	ENGINE	1-0088	1
20	DECAL - CAUTION TO REDUCE INJURY - (E) (SEE 71-1014)	N/A	1
21	DECAL - OPERATING INSTRUCTIONS (E) (SEE 71-1014)	N/A	1
22	DECAL - WARNING RISK OF INJECTION - (E) (SEE 71-1014)	N/A	1
23	DECAL - RISK OF FIRE (SEE 71-1014)	N/A	1
24	DECAL - RISK OF BURNS (SEE 71-1014)	N/A	1
25	DECAL - WARNING HOT SURFACE - (E) (SEE 71-1014)	N/A	1
26	DECAL - Mi-T-M (SEE 71-1014)	N/A	1
27	DECAL - (SEE 71-1014)	N/A	1
28	HANDLE GRIP	7-0059	1
29	NOZZLE	18-0392	1
-	NOZZLE 15035 QC	18-0393	1
-	NOZZLE 25035 QC	18-0395	1
-	NOZZLE 6540	18-0386	1
30	GROMMET	33-0001	4
31	KEY	43-0073	1
32	DECAL - RISK OF INJECTION (SEE 71-1014)	34-1253	1
33	LANCE ASSEMBLY	16-0366	1
34	LOCKWASHER	29-0155	4
35	BOLT	27-0091	4
36	HOSE ASSEMBLY	851-0338	1
37	QUICK CONNECT	17-0006	1
38	HOSE	15-0209	1
39	O-RING	25-0123	1
40	QUICK CONNECT	17-0005	1
41	GUN & WAND - 4000 PSI	16-0441	1
-	DECAL SET	71-1014	1

# PUMP ASSEMBLY (3-0360)



TORQUE SPECS.		
ITEM	FT/LBS	Nm
1	18.0	24.5
4	7.6	10.4
8	29.5	40.0
10	18.4	25.0
26	7.6	10.4
28	8.9	12.0
41	5.9	8.0

3-0360-121713 JDK

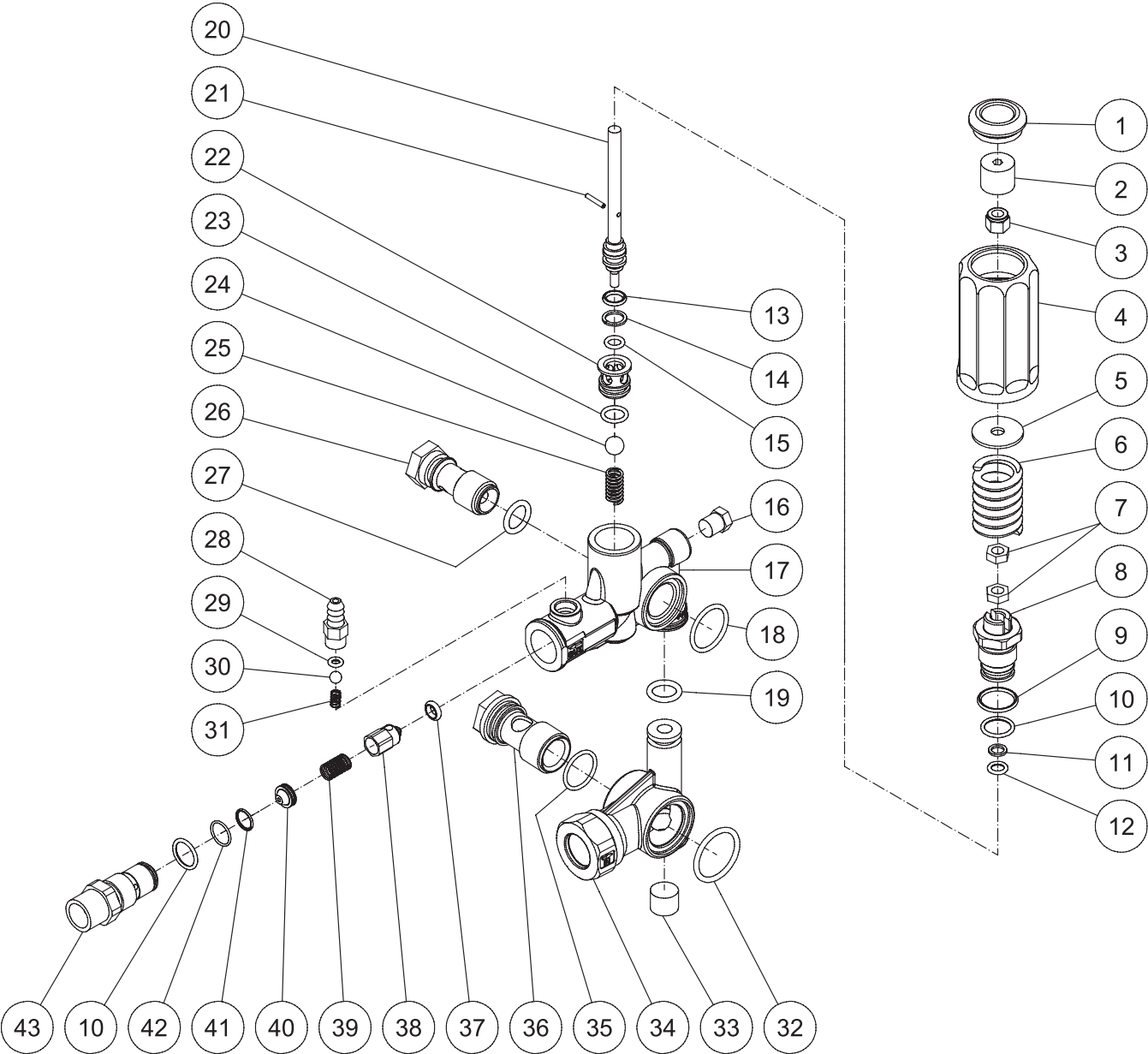
## PUMP ASSEMBLY

ITEM	DESCRIPTION	Mi-T-M #	QTY	ITEM	DESCRIPTION	Mi-T-M #	QTY
1	PLUG	39-0241	6	24	OIL INDICATOR	46-1452	1
2	O-RING (SEE 70-0565)	25-0644	6	25	COVER	46-1453	1
3	COMPLETE VALVE (SEE 70-0609)	SEE KIT	6	26	SCREW	27-8888	8
4	SCREW	N/A	8	27	OIL CAP	39-0254	1
5	WASHER	N/A	8	28	NUT	30-6016	3
6	HEAD	N/A	1	29	WASHER	26-0187	3
7	O-RING (SEE 70-0565)	25-0372	1	30	PISTON GUIDE (SEE 70-0606)	SEE KIT	3
8	PLUG	39-0202	1	31	SPACER	28-1027	3
9	O-RING (SEE 70-0565)	25-0510	1	32	SEAL (SEE 70-0566)	26-0193	3
10	PLUG	39-0102	1	33	O-RING (SEE 70-0565)	25-0371	3
11	RING (SEE 70-0460)	SEE KIT	3	34	PISTON GUIDE	N/A	3
12	GASKET (SEE 70-0567)	SEE KIT	3	35	CONNECTING ROD	N/A	3
13	PISTON GUIDE	46-1449	3	36	CONNECTING ROD PIN	46-0721	3
14	GASKET (SEE 70-0567)	SEE KIT	3	37	O-RING (SEE 70-0565)	SEE KIT	1
15	RING (SEE 70-0567)	SEE KIT	3	38	REAR COVER	46-1455	1
16	O-RING (SEE 70-0565 and 70-0567)	25-0149	3	39	O-RING (SEE 70-0565)	25-0387	1
17	PISTON GUIDE	46-1450	3	40	PLUG	39-0096	1
18	PUMP BODY	N/A	1	41	SCREW	N/A	4
19	BEARING	48-0063	1	42	CRANKSHAFT	N/A	1
20	SNAP RING	46-0676	2	43	BEARING	N/A	1
21	SNAP RING	46-0732	1	44	SEAL (SEE 70-0566)	26-0192	1
22	O-RING (SEE 70-0565)	SEE KIT	1	45	FLANGE	46-1456	1
23	DISC	46-1451	1	46	SCREW	N/A	4

## REPLACEMENT KITS

Mi-T-M KIT #	DESCRIPTION	ITEMS	# OF ASSEMBLIES	# OF CYLINDERS
70-0609	KIT - VALVES	3	6	3
70-0460	KIT - SUPPORT RING	11	3	3
70-0606	KIT - PISTONS	30	3	3
70-0565	KIT - O-RINGS	2, 7, 9, 16, 22, 33, 37, 39	6, 1, 1, 3, 1, 1, 1, 1	3
70-0566	KIT - OIL SEALS	32, 44	3, 1	3
70-0567	KIT - WATER SEALS	12, 14, 15, 16	3, 3, 3, 3	3

# UNLOADER ASSEMBLY (8-0625)



8-0625 071911 MLK



## UNLOADER ASSEMBLY

ITEM	DESCRIPTION	PART #	QTY	ITEM	DESCRIPTION	PART #	QTY
1	PLASTIC CAP	46-1461	1	23	O-RING	25-0255	1
2	BUSHING	46-1462	1	24	BALL	N/A	1
3	LOCKNUT	30-5018	1	25	SPRING	N/A	1
4	KNOB	7-0232	1	26	BANJO BOLT	8-0516	1
5	WASHER	28-0067	1	27	O-RING	25-0388	1
6	SPRING	N/A	1	28	HOSE BARB	46-0869	1
7	NUT	30-6024	2	29	O-RING	25-0371	1
8	PISTION GUIDE	N/A	1	30	BALL	8-0521	1
9	O-RING	25-0644	1	31	SPRING	8-0520	1
10	O-RING	25-0407	2	32	O-RING	25-0519	1
11	SPACER	N/A	1	33	PLUG	39-0363	1
12	O-RING	25-0502	1	34	BY-PASS HOUSING	N/A	1
13	O-RING	N/A	1	35	O-RING	25-0389	1
14	O-RING	25-0404	1	36	BANJO BOLT	8-0517	1
15	O-RING	25-0209	1	37	O-RING	25-0646	1
16	PLUG	39-0097	1	38	NON-RETURN VALVE	46-1249	1
17	VALVE HOUSING	N/A	1	39	SPRING	49-0167	1
18	O-RING	25-0370	1	40	ORIFICE	46-1250	1
19	O-RING	25-0527	1	41	O-RING	25-0500	1
20	THREADED PISTON	N/A	1	42	O-RING	25-0596	1
21	PIN	43-0139	1	43	DETERGENT INJECTOR	46-1251	1
22	SEAT	N/A	1		O-RING REPAIR KIT (INC. 9, 10, 12, 13, 15, 18, 19, 23, 27, 29, 32, 35, 37, 41, 42)	70-0583	

Manufactured by Mi-T-M  
8650 Enterprise Drive, Peosta IA 52068  
563-556-7484/ Fax 563-556-1235