



PARTS LIST FOR
AIR COMPRESSOR/GENERATOR/WELDER
AGW-SR14-30M
AGW-SR14-B

ENGINE:	SUBARU
ENGINE OIL GRADE:	SAE 10W-30
ENGINE OIL CAPACITY:	40.5 oz.
MAXIMUM PRESSURE:	175 PSI
COMPRESSOR OIL GRADE:	SAE30W Non-Detergent
COMPRESSOR OIL CAPACITY:	24.7 oz.
WATTS W/COMPRESSOR:	100 psi - 3000 watts
	150 psi - 2500 watts
WATTS W/O COMPRESSOR:	4500

This Parts Listing has been compiled for your benefit. You can be assured your Mi-T-M Air Compressor/Generator/Welder was constructed and designed with quality and performance in mind. Each component has been rigorously tested to insure the highest level of acceptance.

The contents of this Parts Listing are based on the latest product information available at the time of publication. Mi-T-M reserves the right to make changes in price, color, materials, equipment, specifications or models at any time without notice.

WARNING

THIS IS A PROFESSIONAL AIR COMPRESSOR/GENERATOR/WELDER. CAUTION SHOULD BE OBSERVED WHEN USING OR REPAIRING THIS UNIT! READ AND FOLLOW THE SAFETY WARNINGS LISTED BELOW BEFORE ATTEMPTING ANY REPAIRS ON THIS AIR COMPRESSOR/GENERATOR!

SAFETY WARNINGS

1. NEVER alter or modify the equipment. Be sure any accessory items and system components being used will withstand the pressure developed. Serious injury may occur from an air compressor malfunction or exploding accessories if incorrect system components, attachments or accessories are used. NEVER exceed manufactures maximum allowable pressure rating of attachments. Use only genuine Mi-T-M parts for repair of your air compressor/generator/welder. Failure to do so can cause hazardous operating conditions and will VOID warranty.
2. NEVER make adjustments on machinery while the unit is connected to the engine without first removing the ignition cable from the spark plug. Turning over the machinery by hand during adjustment or cleaning might start the engine and machinery with it, causing serious injury to the operator.
3. Know how to stop and bleed pressures quickly. Be thoroughly familiar with controls. Do not operate without protective covers/ guards.
4. Before servicing the unit, turn unit off, relieve the pressure and allow the unit to cool down. Service in a clean, dry, flat area. Block the wheels to prevent the unit from moving. Be especially careful to properly dispose of any flammable materials.
5. After testing the machine, DO NOT leave the pressurized unit unattended. Shut off the unit and release pressure before leaving.

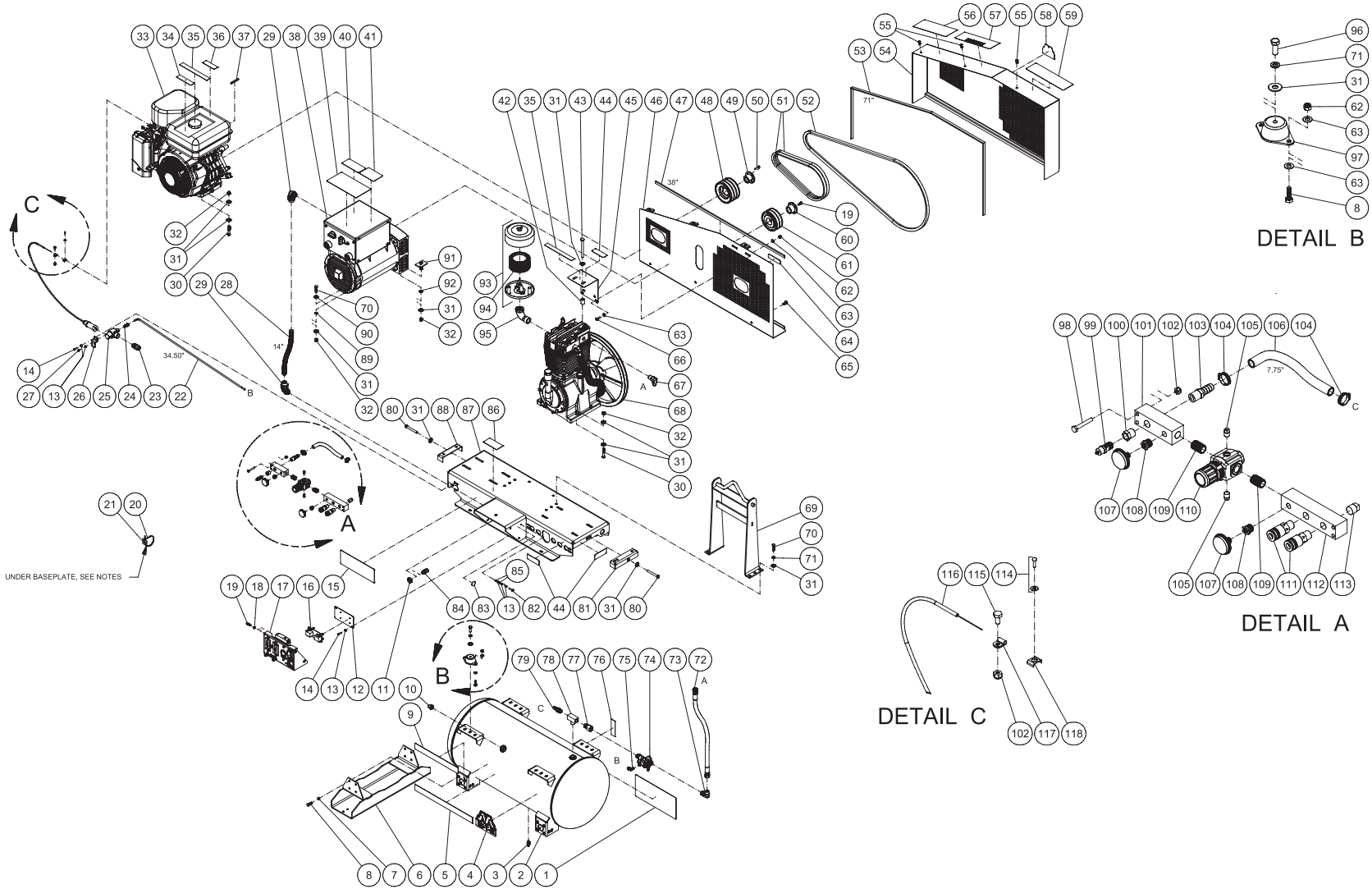
Table of Contents

SPECIFICATIONS	3
FRAME ASSEMBLY FOR AGW-SR14-30M	4
FRAME ASSEMBLY FOR AGW-SR14-B	6
CONTROL BOX ASSEMBLY	8
PUMP ASSEMBLY (3-0298)	10
PILOT VALVE (22-0270)	12
WIRING DIAGRAM	14
WIRING SCHEMATIC	15

SPECIFICATIONS

MODEL NUMBER	AGW-SR14-30M	AGW-SR14-B
Engine:	Subaru	
Model	EX40	
Oil Type	SAE10W-30	
Oil Capacity	40.5 oz.	
Low Oil Protection	Oil Sensor	
Fuel Type	Unleaded Gasoline 86 Octane Minimum	
Fuel Capacity	1.85 Gallon	
Maximum No Load RPM	3600	
Generator:		
Watts w/ Compressor	100 psi - 3000 watts 150 psi - 2500 watts	
Watts w/o Compressor	4500	
Compressor Pump:		
Number of Cylinders	2	
Compression Stages	2	
First Stage Bore	2.17"	
Second Stage Bore	3.94"	
Stroke	3.36"	
RPM	750	
Flywheel	16.5"	
Lubrication	Splash	
Oil Quantity	24.7 oz.	
Oil Type	30 W Non Detergent	
Crankcase	Cast Iron	
Bearings	Ball	
Cylinder	Cast Iron	
Valves	Reed	
Head	Aluminum	
Filter	Canister	
Pilot Valve Setting:		
Cut-out	175 PSI	
Cut-in	125 PSI	
Air Tank:		
Capacity	30 Gallons	N/A
Performance:		
CFM @ 40 PSI	17.0	
CFM @ 100 PSI	16.3	
CFM @ 175 PSI	15.7	
Maximum Pressure	175 PSI	
Pump-up Time: 0-125 PSI	-	N/A
Recovery Time: 90-125 PSI	-	N/A
Weight:		
Net	585 lbs	495 lbs
Shipping	650 lbs	560 lbs
Dimensions:		
Basic L x W x H	46" x 22" x 47"	46" x 22" x 28"
Shipping L x W x H	47" x 32" x 48.5"	47" x 32" x 48.5"

UNIT ASSEMBLY FOR AGW-SR14-30M

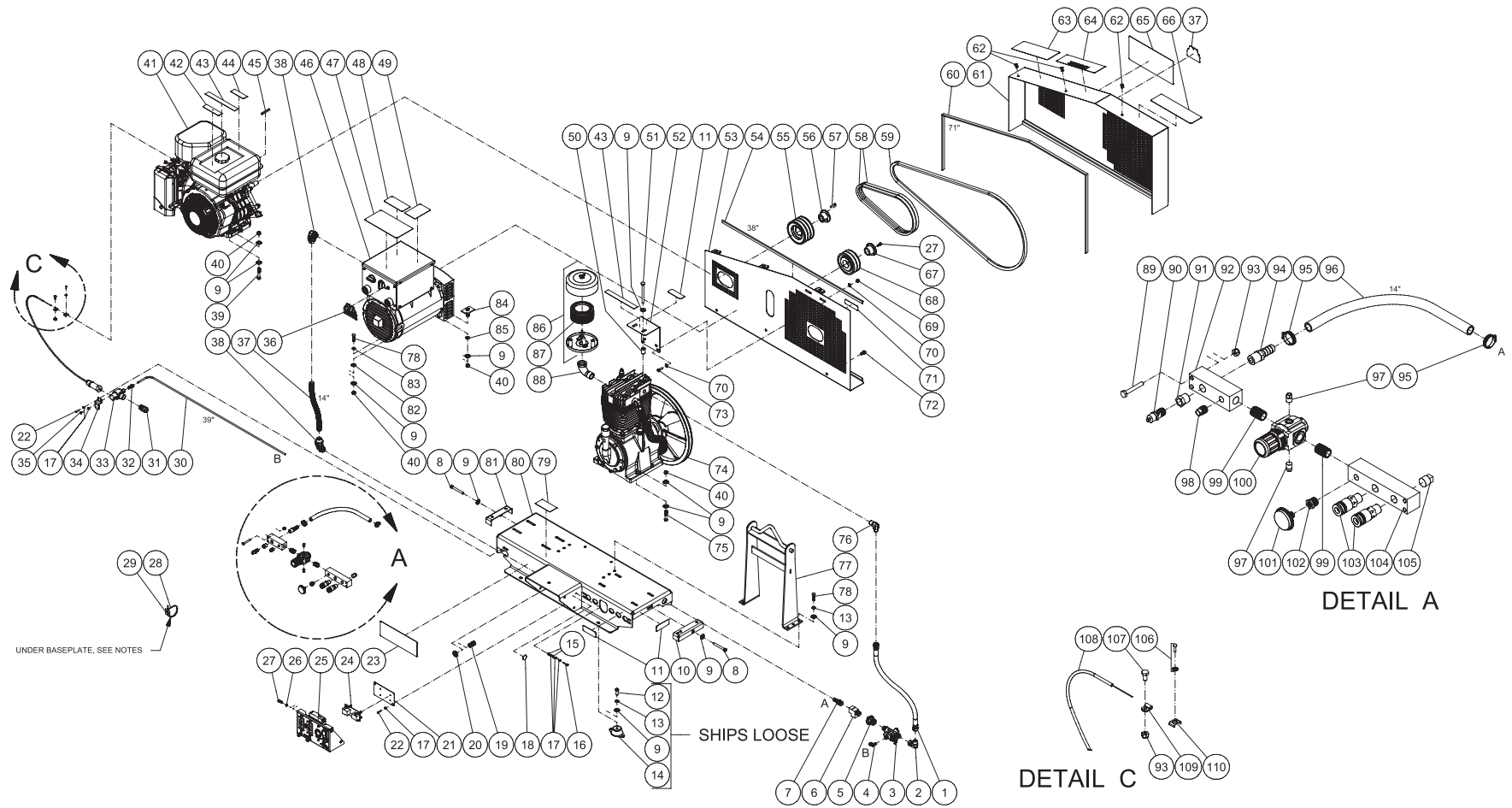


AGW-SR14-30M 061814 JDK

FRAME ASSEMBLY				
ITEM	DESCRIPTION	PART #	QTY	
1	DECAL - OPERATIONS (SEE 71-2008)	N/A	1	
2	TANK ASSEMBLY	12-0209A01	1	
3	PETCOCK	23-0312	1	
4	DECAL - MI-T-M	34-2169	1	
5	DECAL - 17" STRIPE	34-2188	1	
6	FOOT	20-1149A01	2	
7	LOCKWASHER	29-0007	16	
8	BOLT	27-0067	24	
9	DECAL - UNIT INFO (SEE 71-2008)	N/A	1	
10	PLUG	39-0016	1	
11	ELECTRICAL LOCKNUT	32-0587	1	
12	IDLER BOARD BRACKET	13-0217A01	1	
13	STAR WASHER	28-1009	9	
14	SCREW	27-2811	4	
15	DECAL - SPECS (SEE 71-2008)	N/A	1	
16	IDLER BOARD	32-1101	1	
17	CONTROL PANEL ASSEMBLY	N/A	1	
18	LOCKWASHER	29-0006	4	
19	BOLT	27-0015	6	
20	CABLE TIE	33-0022	1	
21	MOUNTING BASE	32-0621	1	
22	COPPER TUBE *(THREE FEET REQUIRED)	54-0034	1	
23	STRAIN RELIEF	32-0437	1	
24	ADAPTER	23-0328	1	
25	SOLENOID	22-0469	1	
26	SOLENOID BRACKET	13-0216A01	1	
27	SCREW	27-8933	2	
28	CONDUIT *(ONE FOOT REQUIRED)	32-0253	1	
29	CONDUIT ELBOW	32-0254	2	
30	BOLT	27-0121	8	
31	WASHER	28-0023	33	
32	LOCKNUT	30-0159	11	
33	ENGINE	1-0177	1	
34	DECAL - RISK OF BURNS (SEE 71-2008)	N/A	1	
35	DECAL - CHECK OIL	N/A	2	
36	DECAL - RISK OF FIRE (SEE 71-2008)	N/A	1	
37	KEY	43-0078	1	
38	WELDER/GENERATOR	32-1096	1	
39	DECAL - WELDER OPERATING INST. (SEE 71-2008)	N/A	1	
40	DECAL - RISK OF SHOCK (SEE 71-2008)	N/A	1	
41	DECAL - WELDING CHART (SEE 71-2008)	N/A	1	
42	SPACER	33-0425	2	
43	BOLT	27-8071	2	
44	DECAL - RISK OF BURNS (SEE 71-2008)	N/A	3	
45	BRACKET	13-0189A01	1	
46	BELTGUARD BACK	6-0153A01	1	
47	EDGING *(FOUR FEET REQUIRED)	33-0020	1	
48	SHEAVE	10-0011	1	
49	BUSHING	9-0005	1	
50	BOLT	27-0850	2	
51	BELT	11-0049	2	
52	BELT	11-0090	1	
53	EDGING *(SIX FEET REQUIRED)	33-0020	1	
54	BELTGUARD FRONT	6-0154A01	1	
55	FASTENER	33-0197	3	
56	DECAL - MAINTENANCE (SEE 71-2008)	N/A	1	
57	DECAL - WARNING (SEE 71-2008)	N/A	1	
58	DECAL - #2M	34-2168	1	
59	DECAL - OPERATIONS (SEE 71-2008)	N/A	1	
60	BUSHING	9-0094	1	
61	SHEAVE	10-0043	1	
62	LOCKNUT	30-0157	10	
63	WASHER	28-0003	20	
64	DECAL - WARNING (SEE 71-2008)	N/A	1	
65	BOLT	27-9524	3	
66	BOLT	27-0066	2	
67	90° ELBOW FITTING	24-0074	1	
68	PUMP	3-0298	1	
69	LIFT HOOK	13-0215A01	1	
70	BOLT	27-0118	7	
71	LOCKWASHER	29-0008	10	
72	HOSE	15-0275	1	
73	90° ELBOW FITTING	24-0272	1	
74	PILOT VALVE	22-0270	1	
75	ELBOW	23-0316	1	
76	DECAL - TANK DRAIN (SEE 71-2008)	N/A	1	
77	CONNECTOR	23-0072	1	
78	TEE	23-0235	1	
79	BARB	23-0045	1	
80	BOLT	27-0576	2	
81	TIGHTNER BRACKET	20-0812A01	1	
82	BOLT	27-8807	1	
83	DECAL - GROUND PICTORIAL (SEE 71-2008)	N/A	1	
84	STRAIN RELIEF	32-0586	1	
85	NUT	30-6001	2	
86	DECAL - SILVER STICKER	N/A	1	
87	BASEPLATE	5-0314A01	1	
88	TIGHTENER BRACKET	20-0650A01	1	
89	WASHER	28-0068	1	
90	WASHER	28-0005	1	
91	MOUNTING BOLT	20-1274A01	2	
92	WASHER	28-0004	2	
93	FILTER CANISTER	19-0237	1	
94	AIR FILTER	19-0226	1	
95	ELBOW	23-0088	1	
96	BOLT	27-0117	4	
97	ISOLATOR	14-0109	4	
98	BOLT	27-0019	4	
99	PRESSURE RELIEF VALVE	22-0267	1	
100	REDUCER	23-0017	1	
101	MANIFOLD BLOCK	51-0033	1	
102	LOCKNUT	30-0155	5	
103	HOSE BARB	23-0105	1	
104	HOSE CLAMP	42-0011	2	
105	PLUG	24-0082	2	
106	HOSE *(ONE FOOT REQUIRED)	15-0007	1	
107	PRESSURE GAUGE	22-0271	2	
108	REDUCER	23-0111	2	
109	NIPPLE	24-0175	2	
110	REGULATOR	22-0231	1	
111	QC SOCKET	17-0068	2	
112	MANIFOLD BLOCK	51-0039	1	
113	PLUG	24-0034	1	
114	SCREW AND WASHER	45-0705	1	
115	BOLT	27-0014	1	
116	THROTTLE CONTROL	33-0548	1	
117	CLAMP - BULLWHIP	42-0057	1	
118	CLAMP	42-0058	1	
-	DECAL SET	71-2008	1	

*MUST ORDER IN ONE FOOT LENGTHS

FRAME ASSEMBLY FOR AGW-SR14-B

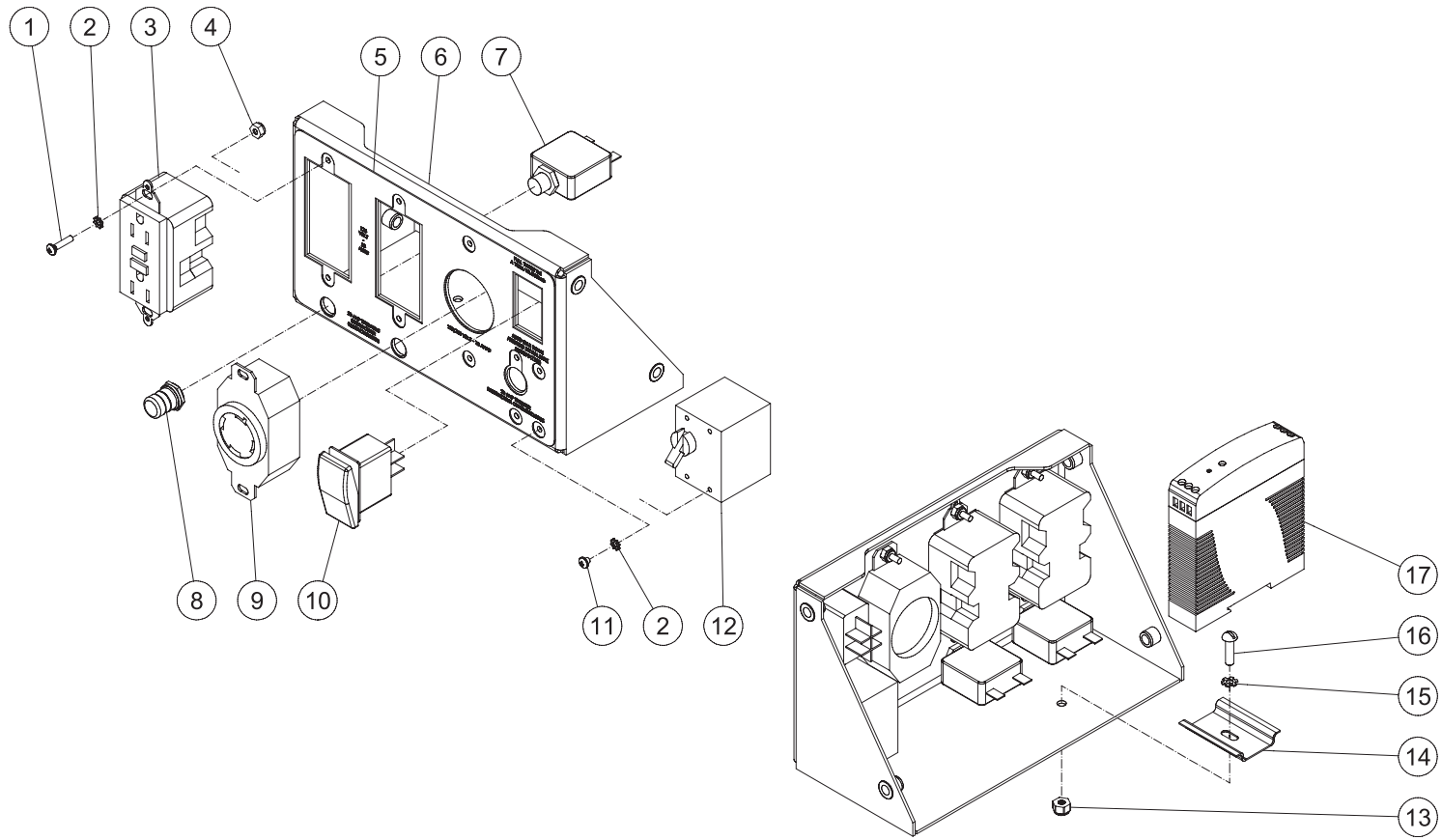


AGW-SR14-B 061814 JDK

				AGW-SR14-30M-B 061814 JDK			
FRAME ASSEMBLY							
ITEM	DESCRIPTION	PART #	QTY	ITEM	DESCRIPTION	PART #	QTY
1	HOSE	15-0275	1	57	BOLT	27-0850	2
2	ELBOW	24-0272	1	58	BELT	11-0049	2
3	PILOT VALVE	22-0270	1	59	BELT	11-0090	1
4	ELBOW	23-0316	1	60	EDGING *(SIX FEET REQUIRED)	33-0020	1
5	ADAPTER	23-0365	1	61	BELTGUARD FRONT	6-0154A01	1
6	TEE	23-0124	1	62	FASTENER	33-0197	3
7	BARB	23-0045	1	63	DECAL - MAINTENANCE (SEE 71-2008)	N/A	1
8	BOLT	27-0576	2	64	DECAL - WARNING (SEE 71-2008)	N/A	1
9	WASHER	28-0023	33	65	DECAL - OPERATIONS (SEE 71-2008)	N/A	1
10	TIGHTNER BRACKET	20-0812A01	1	66	DECAL - OPERATIONS (SEE 71-2008)	N/A	1
11	DECAL - RISK OF BURNS (SEE 71-2008)	N/A	3	67	BUSHING	9-0094	1
12	BOLT	27-0117	4	68	SHEAVE	10-0043	1
13	LOCKWASHER	29-0008	10	69	LOCKNUT	30-0157	2
14	ISOLATOR	14-0109	4	70	WASHER	28-0003	4
15	NUT	30-6001	2	71	DECAL - WARNING (SEE 71-2008)	N/A	1
16	BOLT	27-8807	1	72	BOLT	27-9524	3
17	STAR WASHER	28-1009	9	73	BOLT	27-0066	2
18	DECAL - GROUND PICTORIAL (SEE 71-2008)	N/A	1	74	PUMP	3-0298	1
19	STRAIN RELIEF	32-0586	1	75	BOLT	27-0121	4
20	ELECTRICAL LOCKNUT	32-0587	1	76	ELBOW	24-0074	1
21	IDLER BOARD BRACKET	13-0217A01	1	77	LIFT HOOK	13-0215A01	1
22	SCREW	27-2811	4	78	BOLT	27-0118	7
23	DECAL - SPECS (SEE 71-2008)	N/A	1	79	DECAL - SILVER STICKER	N/A	1
24	IDLER BOARD	32-1101	1	80	BASEPLATE	5-0314A01	1
25	CONTROL PANEL ASSEMBLY	N/A	1	81	TIGHTNER BRACKET	20-0650A01	1
26	LOCKWASHER	29-0006	4	82	WASHER	28-0005	1
27	BOLT	27-0015	6	83	WASHER	28-0068	1
28	CABLE TIE	33-0022	1	84	MOUNTING BOLT	20-1274A01	2
29	MOUNTING BASE	32-0621	1	85	WASHER	28-0004	2
30	COPPER TUBE *(FOUR FEET REQUIRED)	54-0034	1	86	FILTER CANISTER	19-0237	1
31	STRAIN RELIEF	32-0437	1	87	AIR FILTER	19-0226	1
32	ADAPTER	23-0328	1	88	ELBOW	23-0088	1
33	SOLENOID	22-0469	1	89	BOLT	27-0019	4
34	SOLENOID BRACKET	13-0216A01	1	90	PRESSURE RELIEF VALVE	22-0474	1
35	SCREW	27-8933	2	91	REDUCER	23-0017	1
36	DECAL - #2M	34-2168	2	92	MANIFOLD BLOCK	51-0033	1
37	CONDUIT *(TWO FEET REQUIRED)	32-0253	1	93	LOCKNUT	30-0155	5
38	CONDUIT ELBOW	32-0254	2	94	HOSE BARB	23-0105	1
39	BOLT	27-0122	4	95	HOSE CLAMP	42-0011	2
40	LOCKNUT	30-0159	11	96	HOSE *(TWO FEET REQUIRED)	15-0007	1
41	ENGINE	1-0177	1	97	PLUG	24-0082	2
42	DECAL - RISK OF BURNS (SEE 71-2008)	N/A	1	98	PLUG	24-0009	1
43	DECAL - CHECK OIL	N/A	2	99	NIPPLE	24-0175	2
44	DECAL - RISK OF FIRE (SEE 71-2008)	N/A	1	100	REGULATOR	22-0231	1
45	KEY	43-0078	1	101	PRESSURE GAUGE	22-0271	1
46	WELDER/GENERATOR	32-1096	1	102	REDUCER	23-0111	1
47	DECAL - WELDER OPERATING INST. (SEE 71-2008)	N/A	1	103	QC SOCKET	17-0068	2
48	DECAL - RISK OF SHOCK (SEE 71-2008)	N/A	1	104	MANIFOLD BLOCK	51-0039	1
49	DECAL - WELDING CHART (SEE 71-2008)	N/A	1	105	PLUG	24-0034	1
50	SPACER	33-0425	2	106	SCREW AND WASHER	45-0705	1
51	BOLT	27-8071	2	107	BOLT	27-0014	1
52	BRACKET	13-0189A01	1	108	THROTTLE CONTROL	33-0548	1
53	BELTGUARD BACK	6-0153A01	1	109	CLAMP - BULLWHIP	42-0057	1
54	EDGING *(FOUR FEET REQUIRED)	33-0020	1	110	CLAMP	42-0058	1
55	SHEAVE	10-0011	1	-	DECAL SET	71-2008	1
56	BUSHING	9-0005	1				

*MUST ORDER IN ONE FOOT LENGTHS

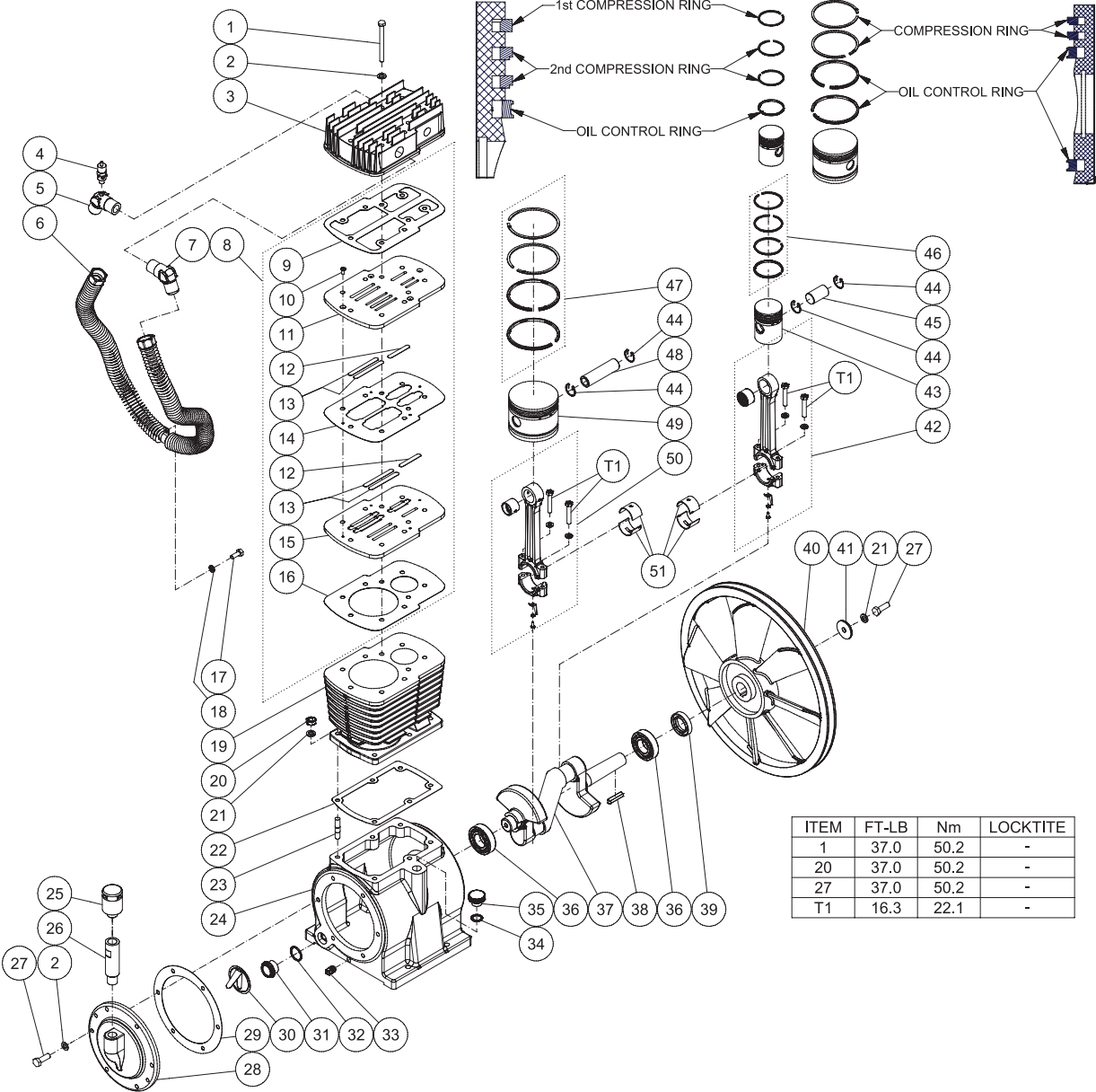
CONTROL BOX ASSEMBLY



CONTROL BOX AGW-SR14-30M 111511 CH

CONTROL BOX ASSEMBLY AGW-SR14-30M 111511 CH			
CONTROL BOX ASSEMBLY			
ITEM	DESCRIPTION	PART #	QTY
1	SCREW	27-8881	6
2	LOCKWASHER	29-1013	10
3	GFCI DUPLEX RECEPTACLE	32-0830	2
4	LOCKNUT	30-0152	6
5	DECAL - AGW CONTROL PANEL (SEE 71-0089)	N/A	1
6	CONTROL BOX COVER	20-1265A01	1
7	CIRCUIT BREAKER	32-0438	2
8	CIRCUIT BREAKER BOOT	32-0441	2
9	125/250 VOLT RECEPTACLE	32-0833	1
10	ROCKER SWITCH	32-1103	1
11	SCREW	27-9574	4
12	TOGGLE BREAKER - 20A	32-0835	1
13	NUT	30-0154	1
14	DIN RAIL	32-0316	1
15	STAR WASHER	28-1009	1
16	SCREW	27-2811	1
17	DC POWER SUPPLY	32-0951	1
	WIRE KIT (NOT SHOWN)	32-9115	1

PUMP ASSEMBLY (3-0298)

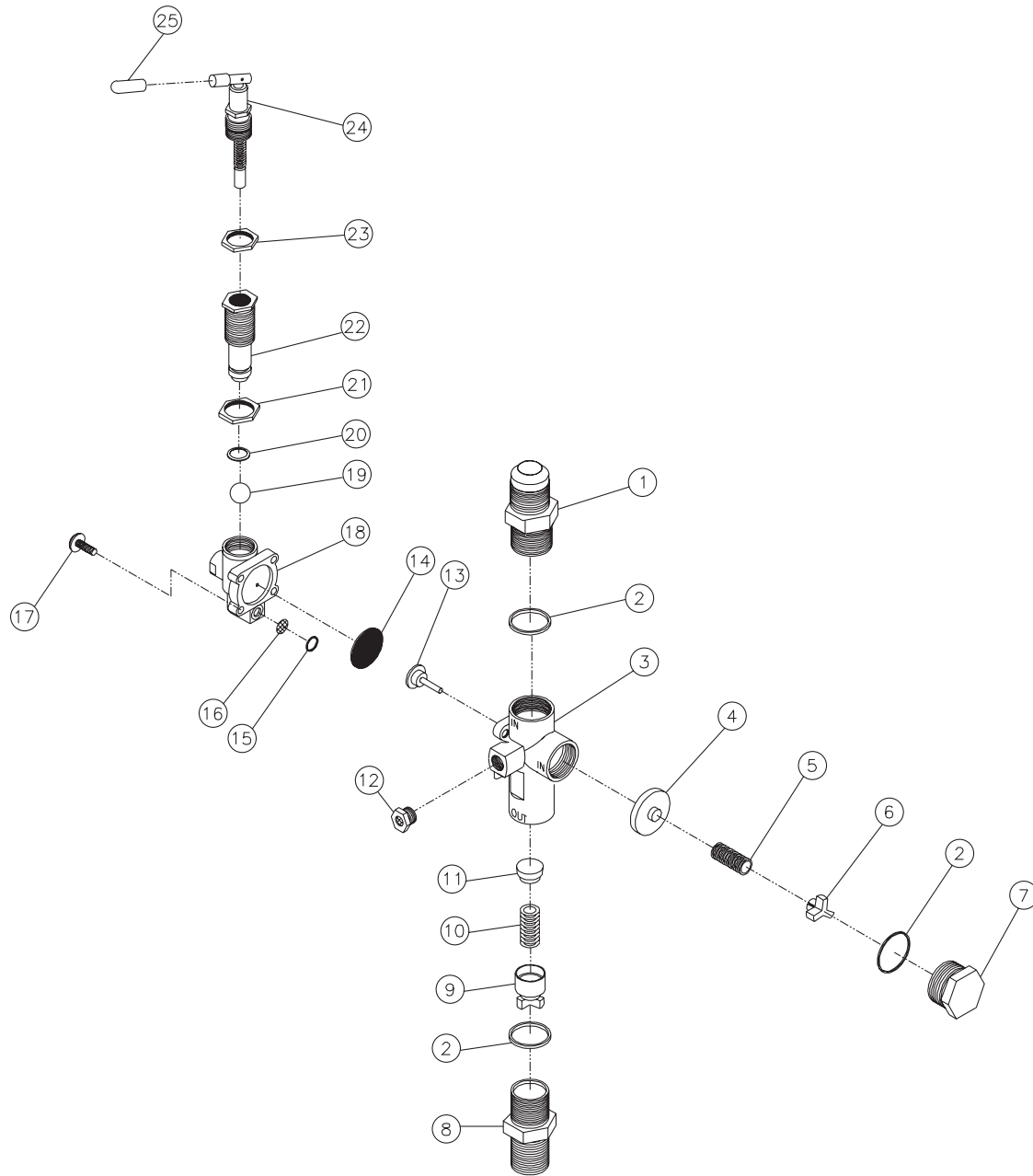


3-0298 021114 JDK

PUMP ASSEMBLY

ITEM	DESCRIPTION	PART #	QTY				
1	BOLT	27-8043	9	27	BOLT	27-8061	7
2	COPPER WASHER	28-1059	15	28	REAR CRANKCASE COVER	46-1278	1
3	CYLINDER HEAD	46-1272	1	29	GASKET - REAR CRANKCASE COVER	N/A	1
4	LP SAFETY VALVE	22-0362	1	30	OBSTRUCT OIL NET	46-1279	1
5	65° OUTLET ELBOW W/PORT	24-0304	1	31	OIL LEVEL SIGHT GLASS	46-1280	1
6	INTERCOOLER TUBE	46-1273	1	32	O-RING	25-0150	1
7	65° OUTLET ELBOW	24-0305	1	33	PLUG	24-0009	1
8	KIT - VALVE PLATE ASSY - (INC. 9-16)	70-0473	1	34	O-RING	25-0160	1
9	GASKET - VALVE PLATE (UPPER)	N/A	1	35	OIL FILL CAP	46-1281	1
10	SCREW	N/A	4	36	BALL BEARING	48-0024	2
11	UPPER VALVE SEAT	N/A	1	37	PUMP CRANKSHAFT	46-1282	1
12	HP VALVE REED	N/A	2	38	KEY	43-0125	1
13	LP VALVE REED	N/A	4	39	OIL SEAL	26-0302	1
14	GASKET - VALVE PLATE (MIDDLE)	N/A	1	40	FLYWHEEL	10-0139	1
15	LOWER VALVE SEAT	N/A	1	41	WASHER	N/A	1
16	GASKET - VALVE PLATE (LOWER)	N/A	1	42	KIT - HP CONNECTING ROD ASSEMBLY (INC. 49)	70-0468	1
17	BOLT	27-8032	1	43	PISTON	46-1283	1
18	LOCKWASHER	29-0054	1	44	PISTON SNAP RING	46-1284	4
19	CYLINDER	46-1274	1	45	PISTON PIN	46-1285	1
20	NUT	30-7203	6	46	KIT - HP PISTON RING	70-0469	1
21	LOCKWASHER	29-0055	7	47	KIT - LP PISTON RING	70-0470	1
22	GASKET - CYLINDER	N/A	1	48	PISTON PIN	46-1286	1
23	STUD	27-8991	6	49	PISTON	46-1287	1
24	PUMP CRANKCASE	46-1275	1	50	KIT - LP CONNECTING ROD ASSY (INC. 49)	70-0471	1
25	BREATHER ASSY	46-1276	1	51	CONNECTING ROD BUSHING	46-1288	4
26	BREATHER PIPE	46-1277	1	-	KIT - PUMP GASKET - (INC. 9, 14, 16, 20, 27)	70-0472	1

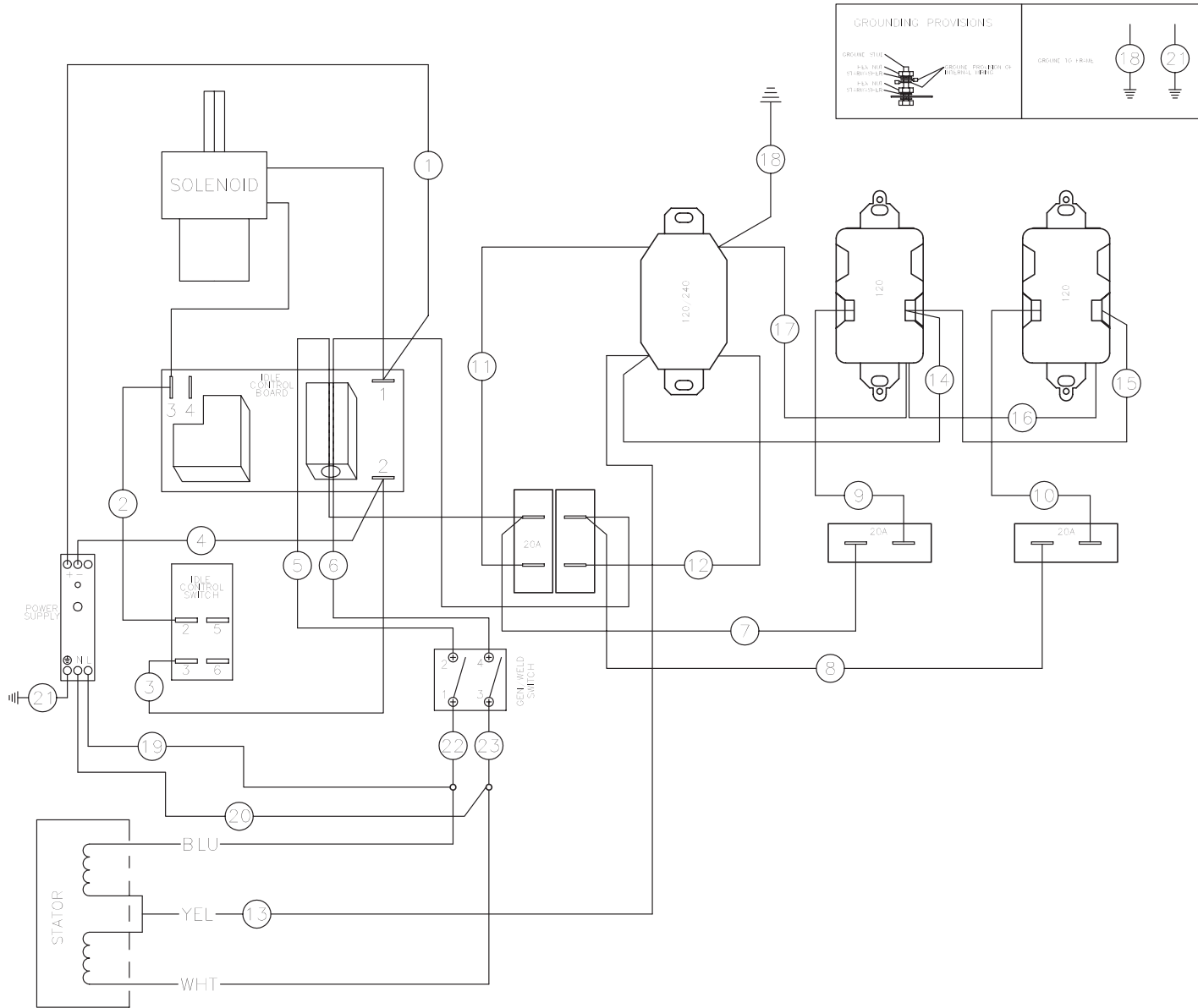
PILOT VALVE (22-0270)



22-0270 062905 DLG

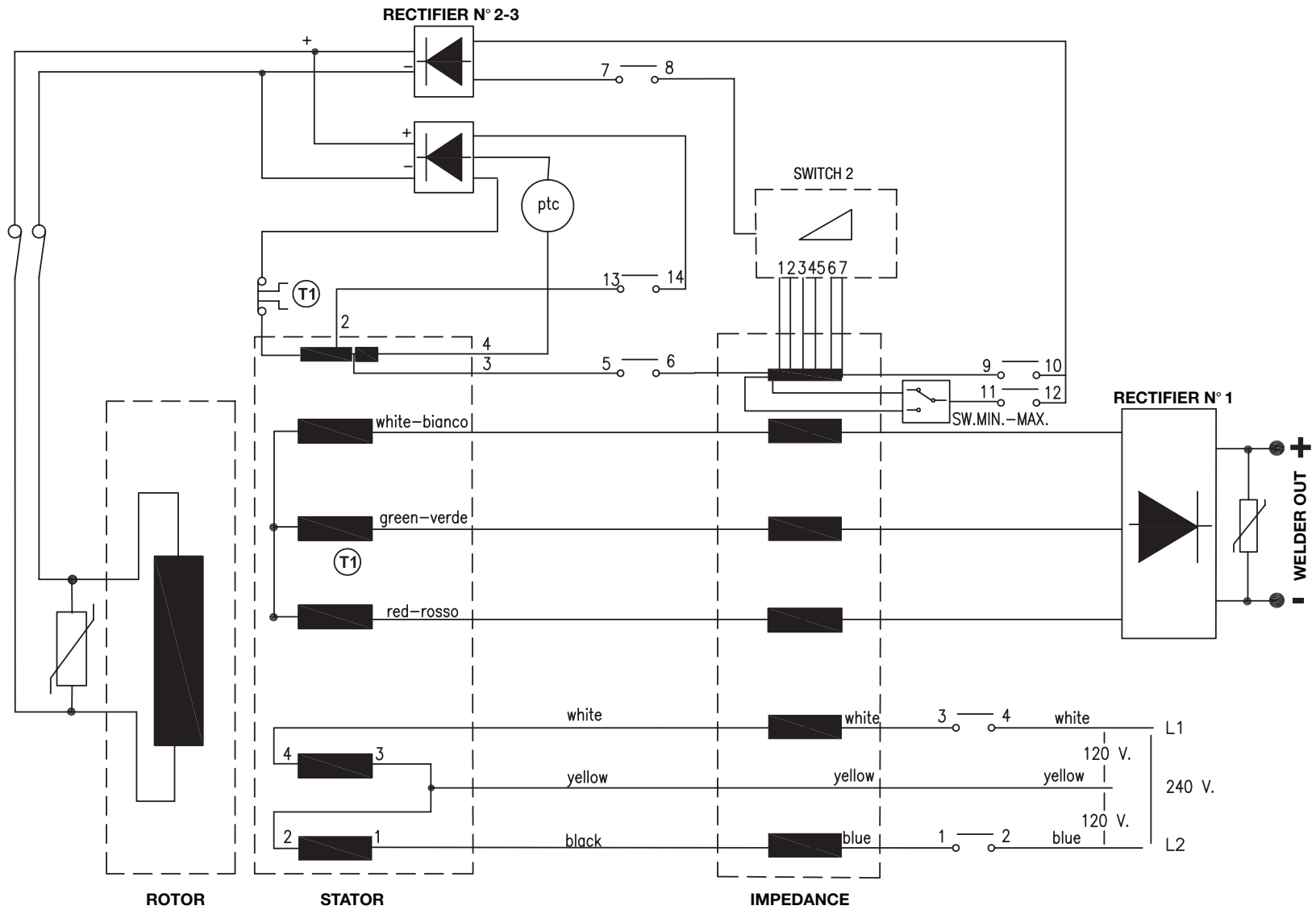
PILOT VALVE (22-0270)			
REF #	DESCRIPTION	PART #	QTY
1	Inlet Port Fitting	N/A	1
2	O-ring (See 70-0241)	N/A Sep.	3
3	Main Body	N/A	1
4	Piston Assembly-Unloader Valve (See 70-0241)	N/A Sep.	1
5	Spring-Unloader Valve (See 70-0241)	N/A Sep.	1
6	Spring Seat-Unloader Valve	N/A	1
7	Cap	N/A	1
8	Discharge Port Fitting	N/A	1
9	Spring Seat Assembly-Check Valve	N/A	1
10	Spring-Check Valve (See 70-0241)	N/A Sep.	1
11	Piston-Check Valve (See 70-0241)	N/A Sep.	1
12	Muffler	23-0419	1
13	Stem Unloader (See 70-0241)	N/A Sep.	1
14	Diaphragm (See 70-0241)	N/A Sep.	1
15	O-ring (See 70-0241)	N/A Sep.	1
16	Screen (See 70-0241)	N/A Sep.	1
17	Screw w/Washer	N/A	4
18	Pilot Body	N/A	1
19	Ball (See 70-0241)	N/A Sep.	1
20	O-ring (See 70-0241)	N/A Sep.	1
21	Differential Adjusting Locknut	N/A	1
22	Differential Adjusting Nut	N/A	1
23	Pressure Adjusting Locknut	N/A	1
24	Pressure Adjusting Toggle Assembly (See 70-0241)	N/A Sep.	1
25	Red Toggle Cover	N/A	1
	Repair Kit (Includes 4-5, 10-11, 13-16, 19-20, 24 and 3 each 2)	70-0241	

WIRING DIAGRAM



WIRING DIAGRAM AGW-SR14-30M 020712 RSW

WIRING SCHEMATIC



WIRING SCHEMATIC AGW-SR14-30M 092211 PJH

Manufactured by Mi-T-M
8650 Enterprise Drive, Peosta IA 52068
563-556-7484/ Fax 563-556-1235