



PARTS LIST FOR
AIR COMPRESSOR/GENERATOR/WELDER
AGW-SH22-20M

ENGINE:	HONDA
ENGINE OIL GRADE:	SAE 10W-30
ENGINE OIL CAPACITY:	67.6 oz.
MAXIMUM PRESSURE:	175 PSI
COMPRESSOR OIL GRADE:	SAE30W Non-Detergent
COMPRESSOR OIL CAPACITY:	48 oz.
WATTS W/COMPRESSOR:	150 psi - 4500 watts
WATTS W/O COMPRESSOR:	4500

This Parts Listing has been compiled for your benefit. You can be assured your Mi-T-M Air Compressor/Generator/Welder was constructed and designed with quality and performance in mind. Each component has been rigorously tested to insure the highest level of acceptance.

The contents of this Parts Listing are based on the latest product information available at the time of publication. Mi-T-M reserves the right to make changes in price, color, materials, equipment, specifications or models at any time without notice.

WARNING

THIS IS A PROFESSIONAL AIR COMPRESSOR/GENERATOR/WELDER. CAUTION SHOULD BE OBSERVED WHEN USING OR REPAIRING THIS UNIT! READ AND FOLLOW THE SAFETY WARNINGS LISTED BELOW BEFORE ATTEMPTING ANY REPAIRS ON THIS AIR COMPRESSOR/GENERATOR!

SAFETY WARNINGS

1. NEVER alter or modify the equipment. Be sure any accessory items and system components being used will withstand the pressure developed. Serious injury may occur from an air compressor malfunction or exploding accessories if incorrect system components, attachments or accessories are used. NEVER exceed manufactures maximum allowable pressure rating of attachments. Use only genuine Mi-T-M parts for repair of your air compressor/generator/welder. Failure to do so can cause hazardous operating conditions and will VOID warranty.
2. NEVER make adjustments on machinery while the unit is connected to the engine without first removing the ignition cable from the spark plug. Turning over the machinery by hand during adjustment or cleaning might start the engine and machinery with it, causing serious injury to the operator.
3. Know how to stop and bleed pressures quickly. Be thoroughly familiar with controls. Do not operate without protective covers/ guards.
4. Before servicing the unit, turn unit off, relieve the pressure and allow the unit to cool down. Service in a clean, dry, flat area. Block the wheels to prevent the unit from moving. Be especially careful to properly dispose of any flammable materials.
5. After testing the machine, DO NOT leave the pressurized unit unattended. Shut off the unit and release pressure before leaving.

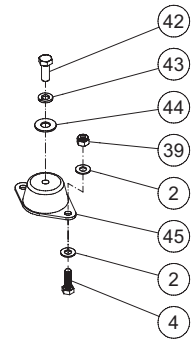
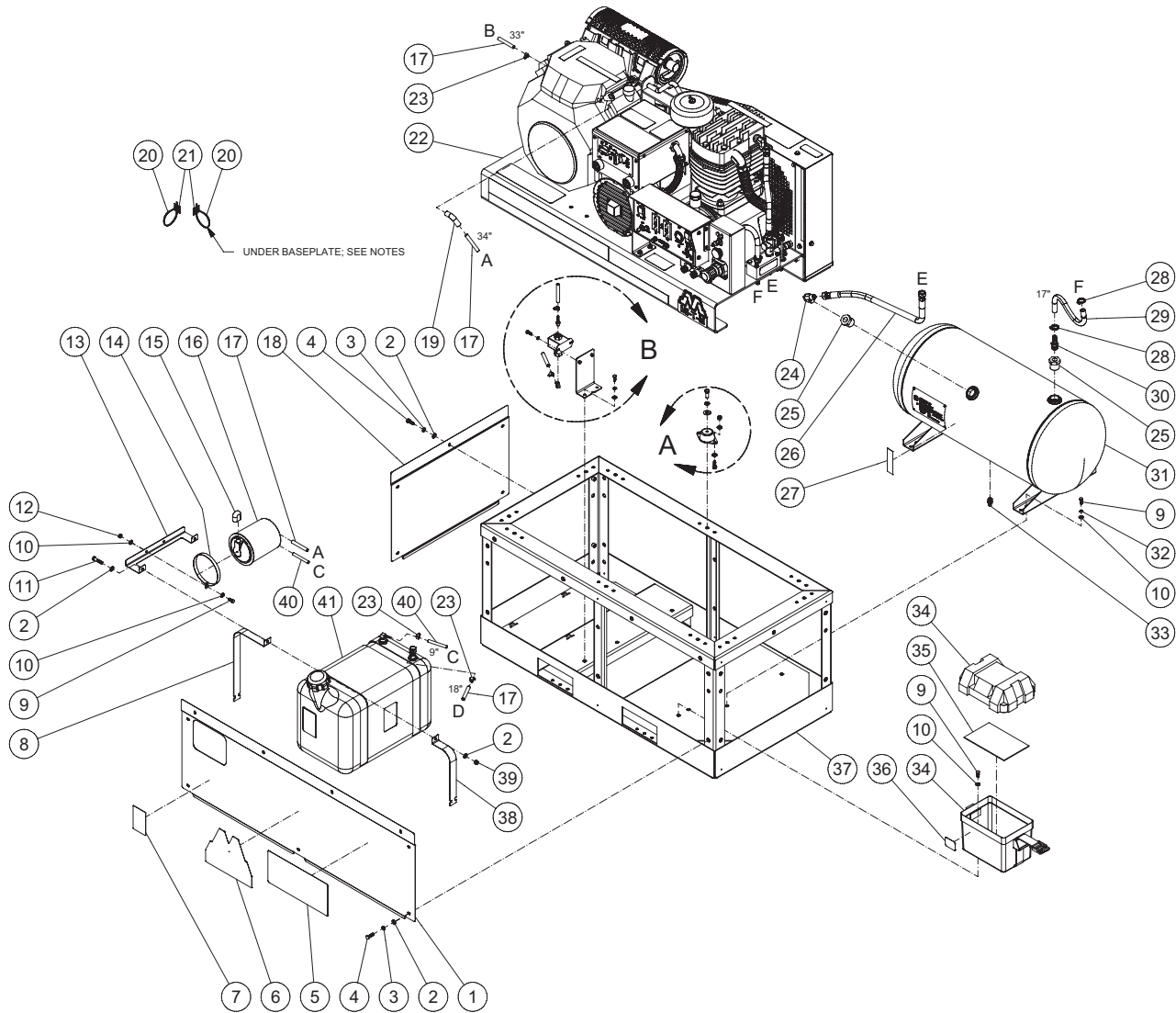
Table of Contents

SPECIFICATIONS	3
FRAME ASSEMBLY	4
BASEPLATE ASSEMBLY	6
CONTROL BOX ASSEMBLY	8
GAS TANK ASSEMBLY	10
ENGINE ASSEMBLY	12
PUMP ASSEMBLY (3-0304)	14
PILOT VALVE (22-0270)	16
WIRING DIAGRAM	18
WIRING SCHEMATIC	19

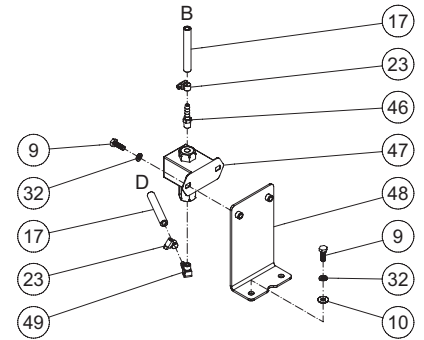
SPECIFICATIONS

MODEL NUMBER	AGW-SH22-20M	
Engine:	Honda	
Model	GX690	
Oil Type	SAE10W 30	
Oil Capacity	67.6 oz.	
Low Oil Protection	Oil Alert	
Fuel Type	Unleaded Gasoline 87 Octane Minimum	
Fuel Capacity	10 Gallon	
Maximum No Load RPM	3600	
Generator/Welder:	AC Output	DC Amps
Voltage/Amps	120V - 37.5A 240V - 17.8A	50A - 220A
Watts	4500	
Compressor Pump:		
Number of Cylinders	2	
Compression Stages	2	
First Stage Bore	4.72"	
Second Stage Bore	2.56"	
Stroke	3.15"	
Max RPM	1000	
Flywheel	16.5"	
Lubrication	Splash	
Oil Quantity	48.0 oz.	
Oil Type	30 W Non Detergent	
Crankcase	Cast Iron	
Bearings	Ball	
Cylinder	Cast Iron	
Valves	Reed	
Head	Cast Iron	
Filter	Canister	
Pilot Valve Setting:		
Cut-out	175 PSI	
Cut-in	125 PSI	
Air Tank:		
Capacity	20 Gallons	
Performance:		
CFM @ 175 PSI	29.0	
Maximum Pressure	175 PSI	
Pump-up Time: 0-125 PSI	1 min. 10 sec	
Recovery Time: 90-125 PSI	15 sec	
Weight:		
Net	803 lbs	
Shipping	870 lbs	
Dimensions:		
Basic L x W x H	47" x 24" x 47.5"	
Shipping L x W x H	47" x 32" x 48.5"	

FRAME ASSEMBLY



DETAIL A



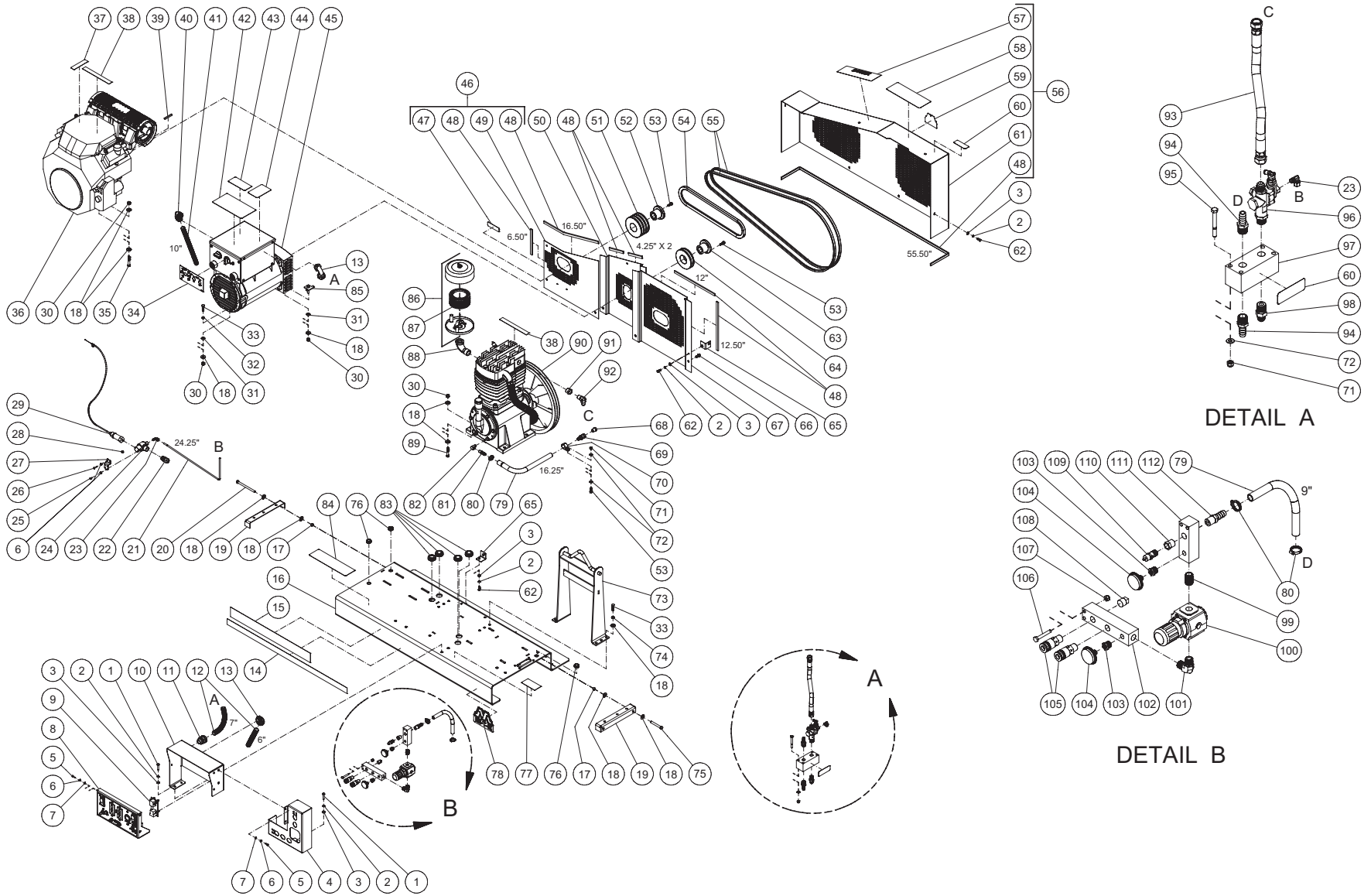
DETAIL B

FRAME ASSEMBLY

ITEM	DESCRIPTION	Mi-T-M #	QTY	ITEM	DESCRIPTION	Mi-T-M #	QTY
1	FRONT PANEL	20-1330A01	1	26	HOSE	15-0275	1
2	WASHER	28-0003	47	27	DECAL - TANK DRAIN (SEE 71-2009)	N/A	2
3	LOCKWASHER	29-0007	19	28	HOSE CLAMP	42-0011	2
4	BOLT	27-0067	31	29	HOSE *(TWO FEET REQUIRED)	15-0007	1
5	DECAL - OPERATIONS (SEE 71-2009)	N/A	1	30	BARB	23-0045	1
6	DECAL - #5M	34-2171	1	31	AIR TANK	12-0247A01	1
7	DECAL- CAUTION: GASOLINE ONLY	34-1180	1	32	LOCKWASHER	29-0006	8
8	TANK STRAP	20-1328A01	2	33	PETCOCK	23-0312	1
9	BOLT	27-0015	14	34	BATTERY BOX	33-0092	1
10	WASHER	28-0002	14	35	RUBBER PAD	33-0509	1
11	BOLT	27-0069	2	36	DECAL - BATTERY - RISK OF INJURY (SEE 71-2009)	N/A	1
12	LOCKNUT	30-0155	2	37	FRAME	5-0329A01	1
13	CARB CANISTER MOUNT	20-1197A18	1	38	TANK STRAP	20-1329A01	2
14	CARB CANISTER STRAP	20-1187A01	2	39	LOCKNUT	30-0157	14
15	BREATHER VENT COVER	62-0218	1	40	FUEL HOSE *(ONE FOOT REQUIRED)	15-0261	1
16	CARB CANISTER	62-0212	1	41	GAS TANK ASSEMBLY	N/A SEP	1
17	FUEL HOSE *(EIGHT FEET REQUIRED)	15-0008	1	42	BOLT	27-0117	6
18	SIDE PANEL	20-1331A01	2	43	LOCKWASHER	29-0008	6
19	AIR CLEANER ADAPTER	62-0229	1	44	WASHER	28-0023	6
20	CABLE TIE	33-0022	6	45	ISOLATOR	14-0109	6
21	MOUNTING BASE	32-0621	4	46	HOSE BARB	23-0377	1
22	BASEPLATE ASSEMBLY	N/A SEP	1	47	FUEL PUMP	3-0388	1
23	CLAMP WORM	42-0004	5	48	BRACKET	13-0223A01	1
24	90° ELBOW FITTING	24-0074	1	49	ELBOW	23-0501	1
25	REDUCER	23-0226	2	-	DECAL SET	71-2009	1

*MUST ORDER IN ONE FOOT LENGTHS

BASEPLATE ASSEMBLY



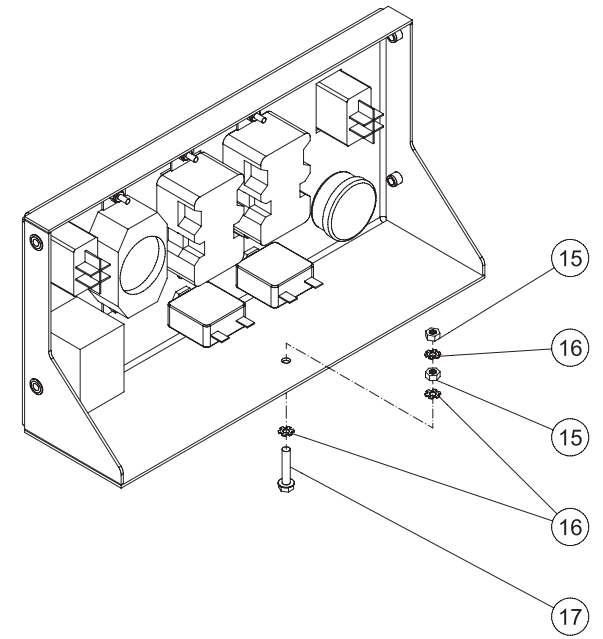
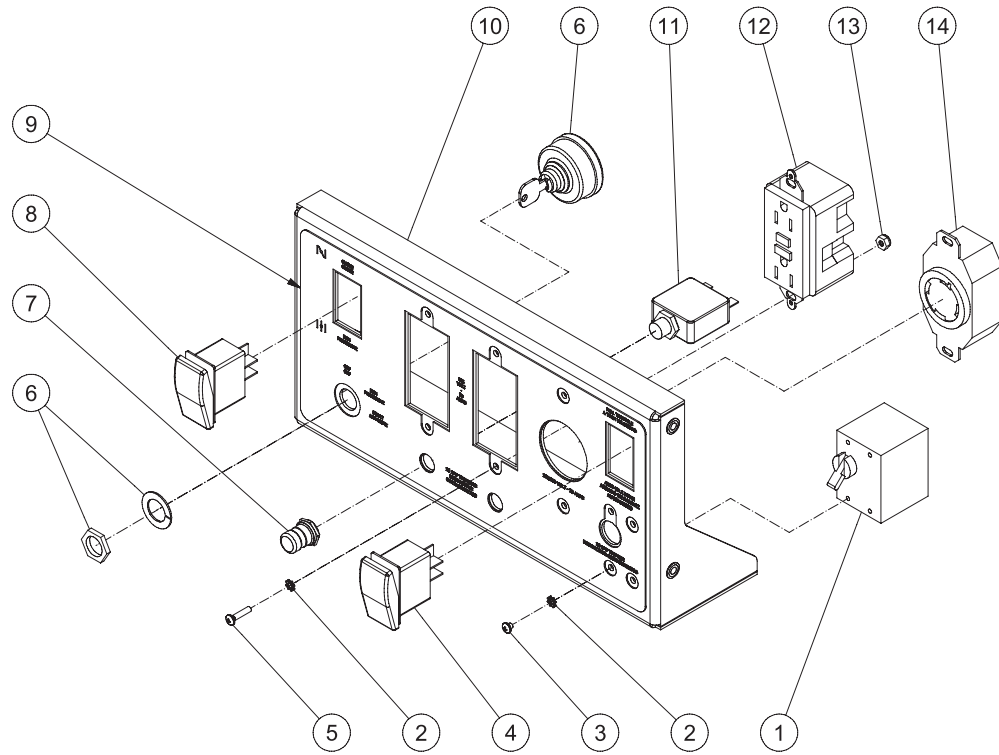
AGW-SH22-20M BASEPLATE ASSY 040213 KMD

FRAME ASSEMBLY

ITEM	DESCRIPTION	MI-T-M #	QTY	ITEM	DESCRIPTION	MI-T-M #	QTY	ITEM	DESCRIPTION	MI-T-M #	QTY
1	BOLT	27-0017	4	39	KEY	43-0078	1	77	DECAL- SILVER STICKER	N/A	1
2	LOCKWASHER	29-0006	16	40	CONDUIT ELBOW	32-0254	1	78	DECAL - MI-T-M (SEE 71-2009)	N/A	1
3	WASHER	28-0002	16	41	CONDUIT FLEX *(ONE FOOT REQUIRED)	32-0253	1	79	HOSE *(THREE FEET REQUIRED)	15-0007	1
4	CONTROL COVER	20-1336A01	1	42	DECAL - WELDER OPERATING INST. (SEE 71-2009)	N/A	1	80	HOSE CLAMP	42-0011	3
5	BOLT	27-8878	6	43	DECAL - RISK OF SHOCK (SEE 71-2009)	N/A	1	81	HOSE BARB	23-0120	1
6	STAR WASHER	28-1009	10	44	DECAL - WELDING CHART (SEE 71-2009)	N/A	1	82	ELBOW	23-0014	1
7	WASHER	28-0001	6	45	WELDER/GENERATOR	32-1096	1	83	GROMMET	33-0546	4
8	CONTROL BOX ASSY	N/A SEP	1	46	BELTGUARD BACK ASSEMBLY- BLACK	854-0128	1	84	DECAL - OPERATIONS (SEE 71-2009)	N/A	1
9	IDLER BOARD	32-1101	1	47	DECAL - WARNING (SEE 71-2009)	N/A	1	85	MOUNTING BOLT	20-1274A01	2
10	ELECTRIC BOX	20-1334A01	1	48	EDGING *(TEN FEET REQUIRED)	33-0020	1	86	FILTER CANISTER	19-0237	1
11	CONDUIT STRAIGHT	32-0488	1	49	BELTGUARD	6-0162A01	1	87	FILTER REPLACEMENT	19-0226	1
12	CONDUIT *(TWO FEET REQUIRED)	32-0486	1	50	BELTGUARD	6-0164A01	1	88	ELBOW	23-0088	1
13	CONDUIT ELBOW	32-0487	2	51	SHEAVE	10-0157	1	89	BOLT	27-0121	4
14	DECAL - MI-T-M STRIPE	N/A	1	52	BUSHING	9-0071	1	90	PUMP	3-0304	1
15	DECAL	N/A	1	53	BOLT	27-0067	7	91	BUSHING	23-0023	1
16	BASE PLATE	5-0330A01	1	54	BELT	11-0047	1	92	90° ELBOW FITTING	24-0074	1
17	NUT	30-0006	4	55	BELT	11-0095	2	93	HOSE	15-0334	1
18	WASHER	28-0023	33	56	BELTGUARD FRONT ASSEMBLY- BLACK	854-0126	1	94	BARB	23-0045	2
19	TENSIONER BRACKET	20-1332A01	2	57	DECAL- WARNING (SEE 71-2009)	N/A	1	95	BOLT	27-0074	4
20	BOLT	27-0133	2	58	DECAL - MAINTENANCE (SEE 71-2009)	N/A	1	96	PILOT VALVE	22-0270	1
21	COPPER TUBE *(THREE FEET REQUIRED)	54-0034	1	59	DECAL - #2M (SEE 71-2009)	N/A	1	97	MANIFOLD BLOCK	51-0045	1
22	STRAIN RELIEF	32-0437	1	60	DECAL - RISK OF BURNS (SEE 71-2009)	N/A	2	98	NIPPLE	24-0054	1
23	ELBOW	23-0316	2	61	BELTGUARD FRONT	6-0165A01	1	99	NIPPLE	24-0175	1
24	SOLENOID	22-0469	1	62	BOLT	27-0015	12	100	REGULATOR	22-0395	1
25	SCREW	27-8933	2	63	BUSHING	9-0097	1	101	ELBOW	24-0131	1
26	SCREW	27-2811	2	64	SHEAVE	10-0158	1	102	MANIFOLD BLOCK	51-0039	1
27	SOLENOID BRACKET	13-0216A01	1	65	BRACKET	13-0224A01	6	103	REDUCER	23-0111	2
28	NUT	30-0154	2	66	BOLT	27-9524	4	104	PRESSURE GAUGE	22-0271	2
29	THROTTLE CONTROL	33-0549	1	67	BELTGUARD	6-0163A01	1	105	QC SOCKET	17-0068	2
30	LOCKNUT	30-0159	11	68	PLUG	23-0411	1	106	BOLT	27-0019	4
31	WASHER	28-0004	3	69	HOSE BARB	23-0360	1	107	LOCKNUT	30-0155	4
32	WASHER	28-0068	1	70	CLIP	33-0291	1	108	PLUG	24-0034	1
33	BOLT	27-0118	7	71	LOCKNUT	30-0157	5	109	PRESSURE RELIEF VALVE	22-0267	1
34	DECAL - WELDER CONTROL PANEL (SEE 71-2009)	N/A	1	72	WASHER	28-0003	6	110	REDUCER	23-0017	1
35	BOLT	27-0122	4	73	LIFT HOOK	13-0215A01	1	111	MANIFOLD BLOCK	51-0033	1
36	ENGINE ASSY	854-0124	1	74	LOCKWASHER	29-0008	6	112	HOSE BARB	23-0105	1
37	DECAL - RISK OF BURNS (SEE 71-2009)	N/A	1	75	BOLT	27-0576	2	-	DECAL SET	71-2009	1
38	DECAL - CHECK OIL	34-0816	2	76	GROMMET	33-0547	3				

*MUST ORDER IN ONE FOOT LENGTHS

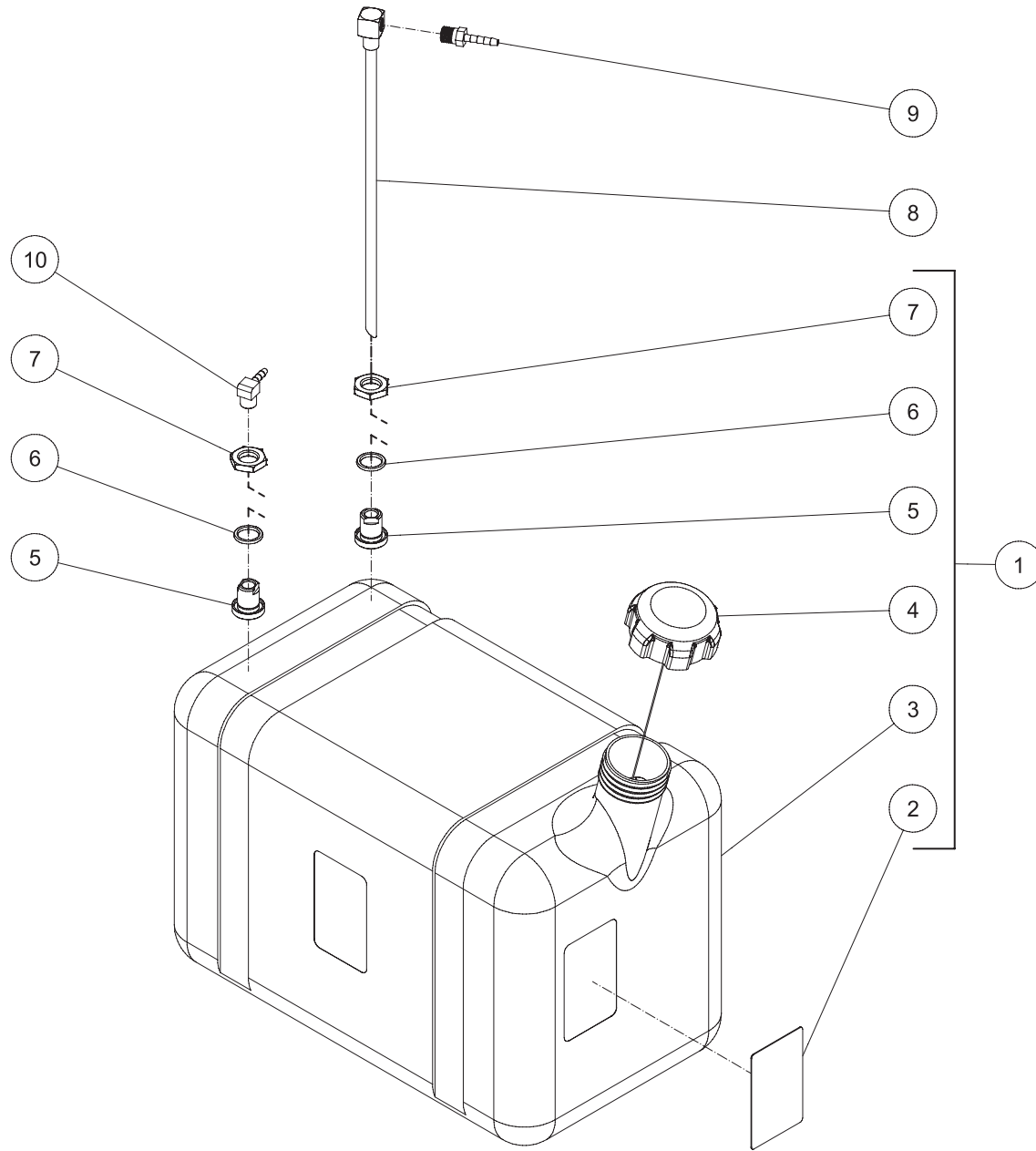
CONTROL BOX ASSEMBLY



CONTROL BOX AGW-SH22-20M 040213 CH

CONTROL BOX ASSY AGW-SH22-20M 040213 KMD			
CONTROL BOX ASSEMBLY			
ITEM	DESCRIPTION	Mi-T-M #	QTY
1	TOGGLE BREAKER - 20A	32-0835	1
2	LOCKWASHER	29-1013	10
3	SCREW	27-9574	4
4	ROCKER SWITCH	32-1103	1
5	SCREW	27-8881	6
6	KEY SWITCH (SEE ENGINE BREAKDOWN)	W/ ENGINE	1
7	CIRCUIT BREAKER BOOT	32-0441	2
8	ROCKER SWITCH	32-1136	1
9	DECAL - AGW CONTROL PANEL	34-2859	1
10	CONTROL PANEL	20-1335A01	1
11	CIRCUIT BREAKER	32-0438	2
12	GFCI DUPLEX RECEPTACLE	32-0830	2
13	LOCKNUT	30-0152	6
14	125/250 VOLT RECEPTACLE	32-0833	1
15	NUT	30-6001	2
16	STAR WASHER	28-1009	3
17	BOLT	27-8807	1

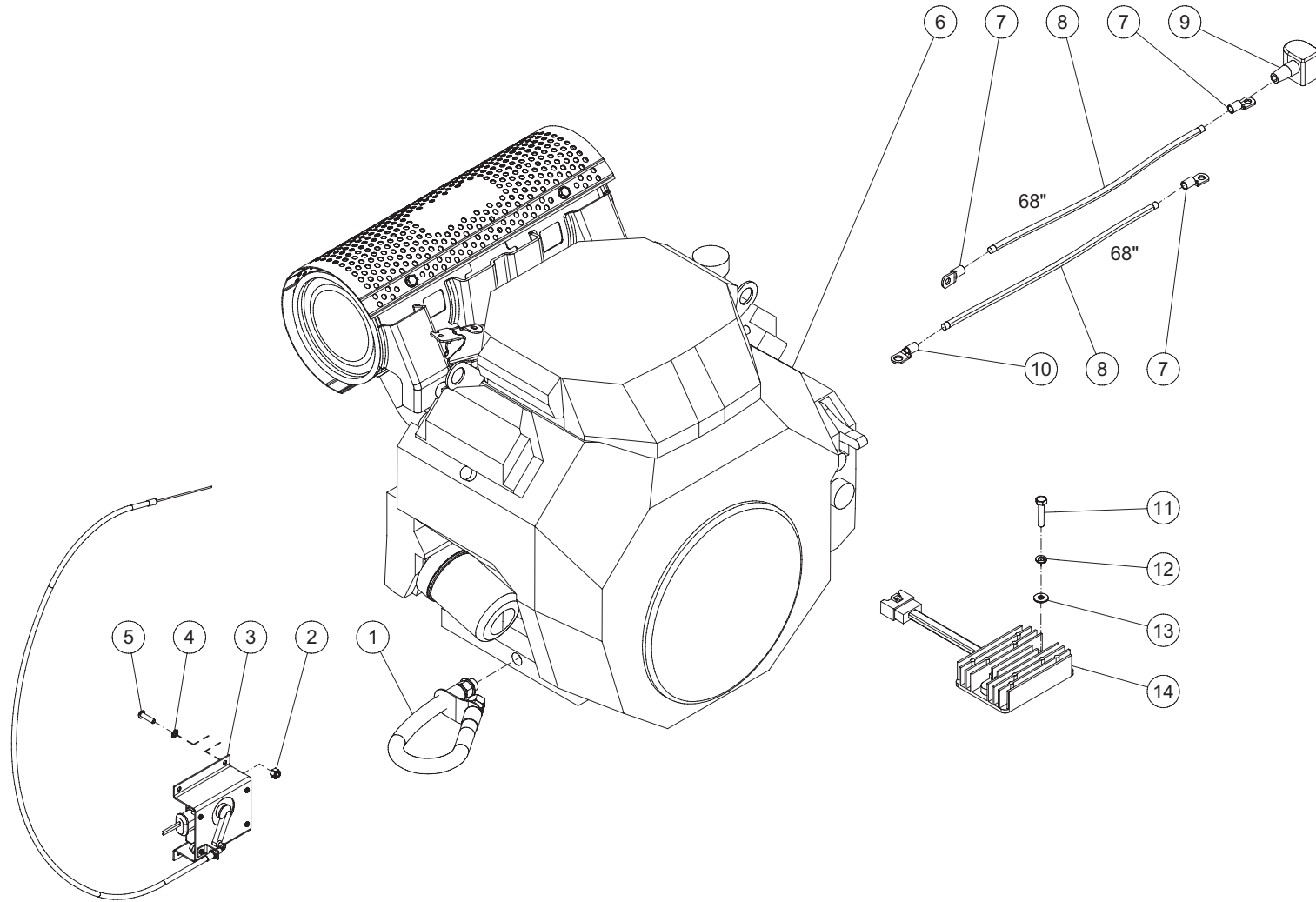
GAS TANK ASSEMBLY



GAS TANK ASSY AGW-SH22-20M 040213 KMD

GAS TANK ASSEMBLY AGW-SH22-20M 040213 KMD			
GAS TANK ASSEMBLY			
ITEM	DESCRIPTION	PART #	QTY
1	GAS TANK ASSY (INC 2-7)	850-0306	1
2	DECAL- CAUTION: GASOLINE ONLY	34-1180	1
3	FUEL TANK - RED	N/A	1
4	FUEL CAP - SEALED/TETHERED	12-0220	1
5	BULKHEAD FITTING	23-0408	2
6	O-RING	25-0427	2
7	NUT	23-0409	2
8	FUEL PICK-UP	33-0352	1
9	BARB	23-0051	1
10	ELBOW	23-0054	1

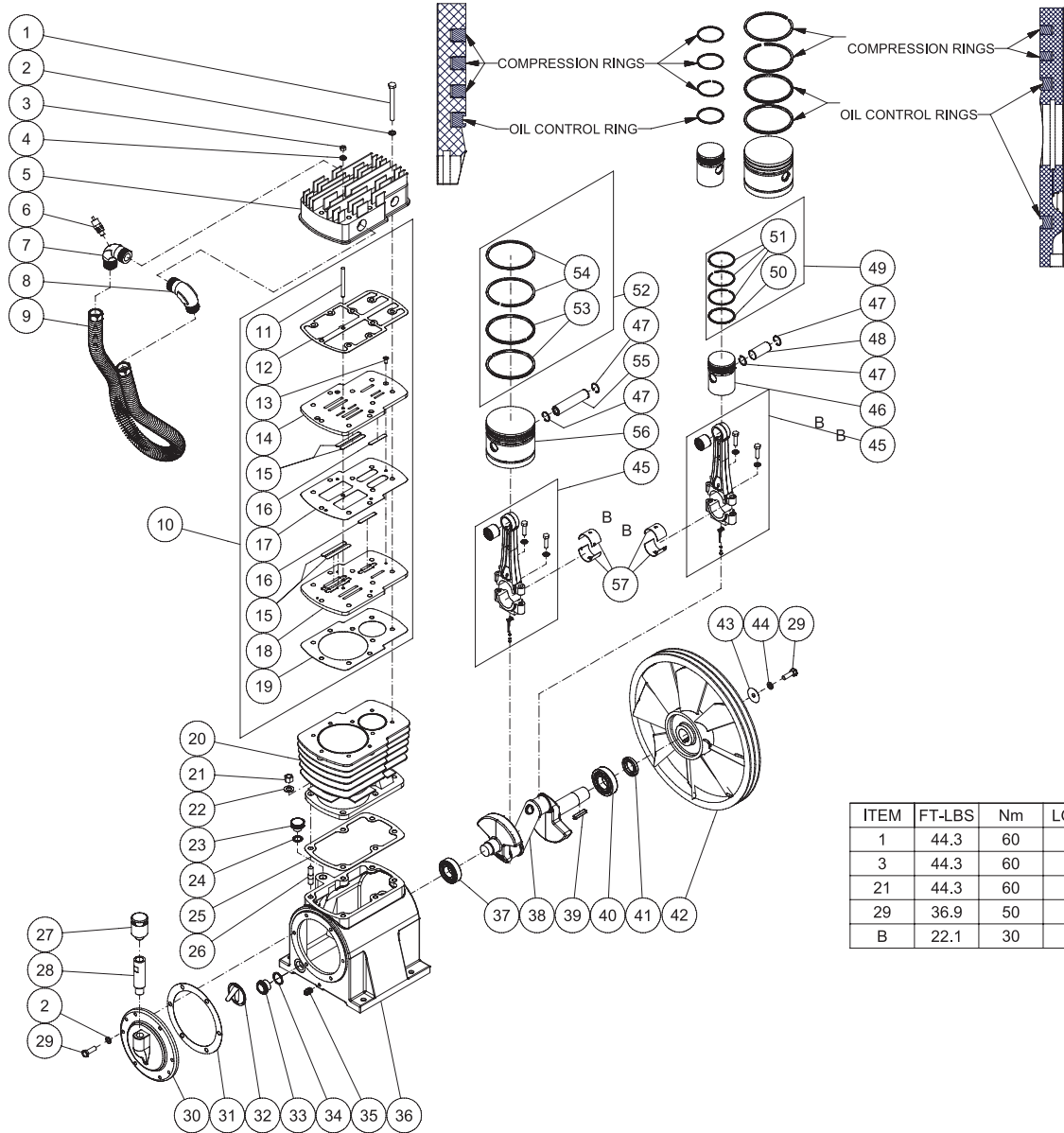
ENGINE ASSEMBLY



854-0124 040213 KMD

854-0124 040213 KMD			
ENGINE ASSEMBLY			
ITEM	DESCRIPTION	Mi-T-M #	QTY
1	DRAIN HOSE	70-0555	1
2	NUT	30-0154	4
3	CHOKE ACTUATOR	W/ ENGINE	1
4	STAR WASHER	28-1009	4
5	SCREW	27-2811	4
6	ENGINE	1-0220	1
7	TERMINAL RING	32-0097	3
8	CABLE *(TWELVE FEET REQUIRED)	32-0065	1
9	BATTERY CABLE COVER	33-0004	1
10	TERMINAL RING	32-0744	1
11	BOLT	27-0017	2
12	LOCKWASHER	29-0006	2
13	WASHER	28-0002	2
14	RECTIFIER	W/ ENGINE	1
*MUST ORDER IN ONE FOOT LENGTHS			

PUMP ASSEMBLY (3-0304)



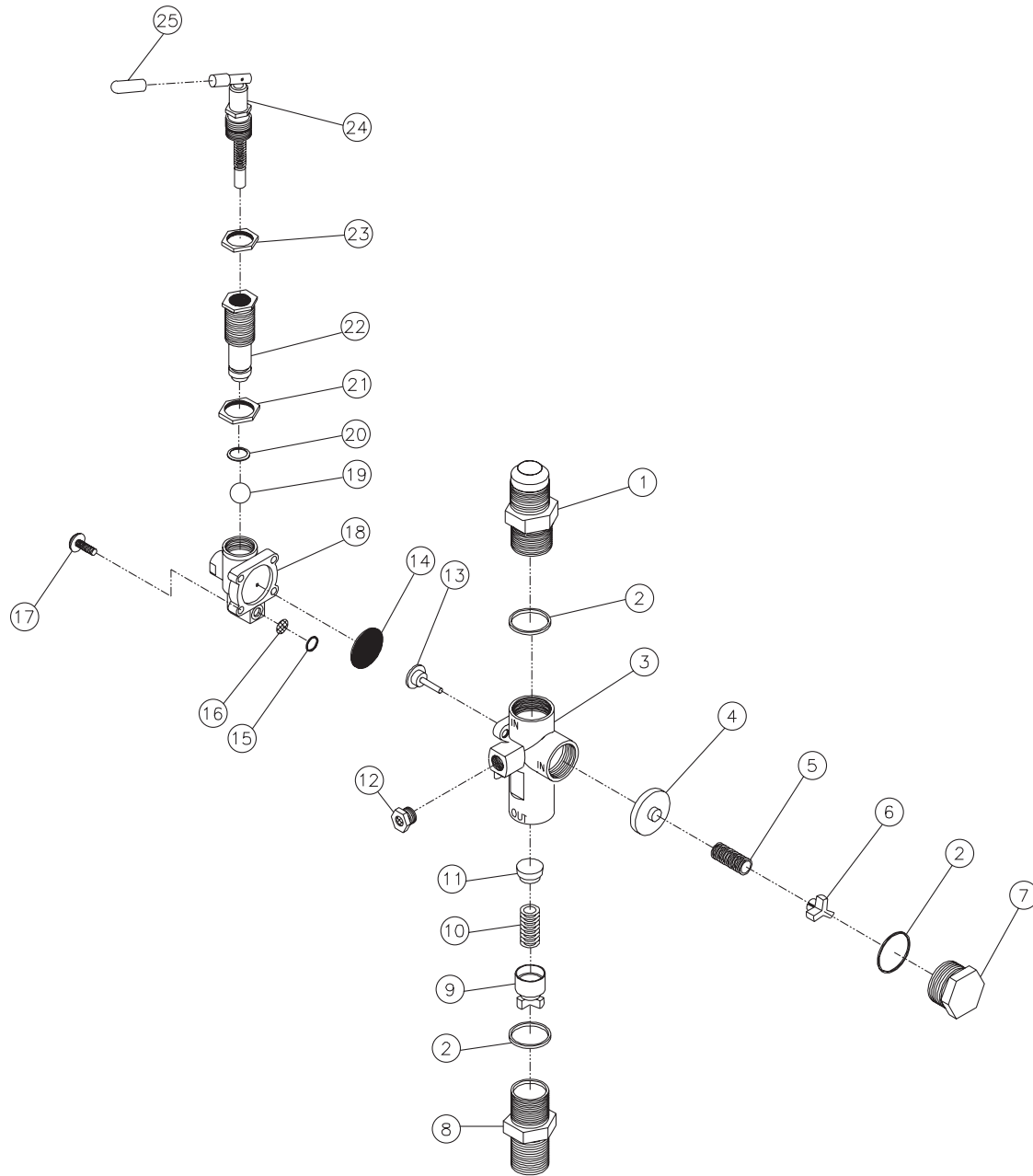
ITEM	FT-LBS	Nm	LOCKTITE
1	44.3	60	-
3	44.3	60	-
21	44.3	60	-
29	36.9	50	-
B	22.1	30	-

3-0304 080312 RSW

PUMP ASSEMBLY

ITEM	DESCRIPTION	PART #	QTY	ITEM	DESCRIPTION	PART #	QTY
1	BOLT	27-8072	9	30	REAR CRANKCASE COVER	46-1278	1
2	COPPER WASHER	28-1059	15	31	GASKET	N/A	1
3	NUT	30-0058	1	32	OBSTRUCT OIL NET	46-1279	1
4	WASHER	28-1011	1	33	OIL LEVEL SIGHT GLASS	46-1280	1
5	PUMP HEAD	46-1318	1	34	O-RING	25-0150	1
6	LP SAFETY VALVE	22-0362	1	35	PLUG	24-0009	1
7	OUTLET ELBOW W/PORT	24-0310	1	36	PUMP CRANKCASE	46-1321	1
8	OUTLET ELBOW	24-0311	1	37	BALL BEARING	48-0024	1
9	INTERCOOLER TUBE	46-1319	1	38	PUMP CRANKSHAFT	46-1322	1
10	VALVE PLATE GASKETS/REEDS (Inc. 11-19)	70-0505	1	39	KEY	43-0125	1
11	STUD	N/A	1	40	BALL BEARING	48-0014	1
12	GASKET	N/A	1	41	OIL SEAL	N/A	1
13	SCREW	N/A	4	42	FLYWHEEL	10-0141	1
14	UPPER VALVE PLATE	N/A	1	43	WASHER	N/A	1
15	LP REED VALVE	N/A	4	44	LOCKWASHER	29-0055	1
16	HP REED VALVE	N/A	2	45	KIT - CONNECTING ROD ASSY	70-0506	2
17	GASKET	N/A	1	46	HP PISTON	46-1323	1
18	LOWER VALVE PLATE	N/A	1	47	PISTON PIN SNAP RING	46-1324	4
19	GASKET	N/A	1	48	HP PISTON PIN	46-1325	1
20	CYLINDER	46-1320	1	49	KIT - HP PISTON RINGS	70-0507	1
21	HEX NUT	N/A	6	50	OIL RING	N/A	1
22	LOCKWASHER	N/A	6	51	COMPRESSION RING	N/A	3
23	OIL FILL CAP	46-1281	1	52	KIT - LP PISTON RINGS	70-0508	1
24	O-RING	25-0160	1	53	OIL RING	N/A	2
25	GASKET	N/A	1	54	COMPRESSION RING	N/A	2
26	STUD	N/A	6	55	LP PISTON PIN	46-1326	1
27	BREATHER ASSY	46-1276	1	56	LP PISTON	46-1327	1
28	BREATHER PIPE	46-1277	1	57	CONNECTING ROD BUSHING	46-1328	4
29	BOLT	N/A	7	-	KIT - PUMP GASKETS (Inc. 12, 17, 19, 25, 31)	70-0509	1

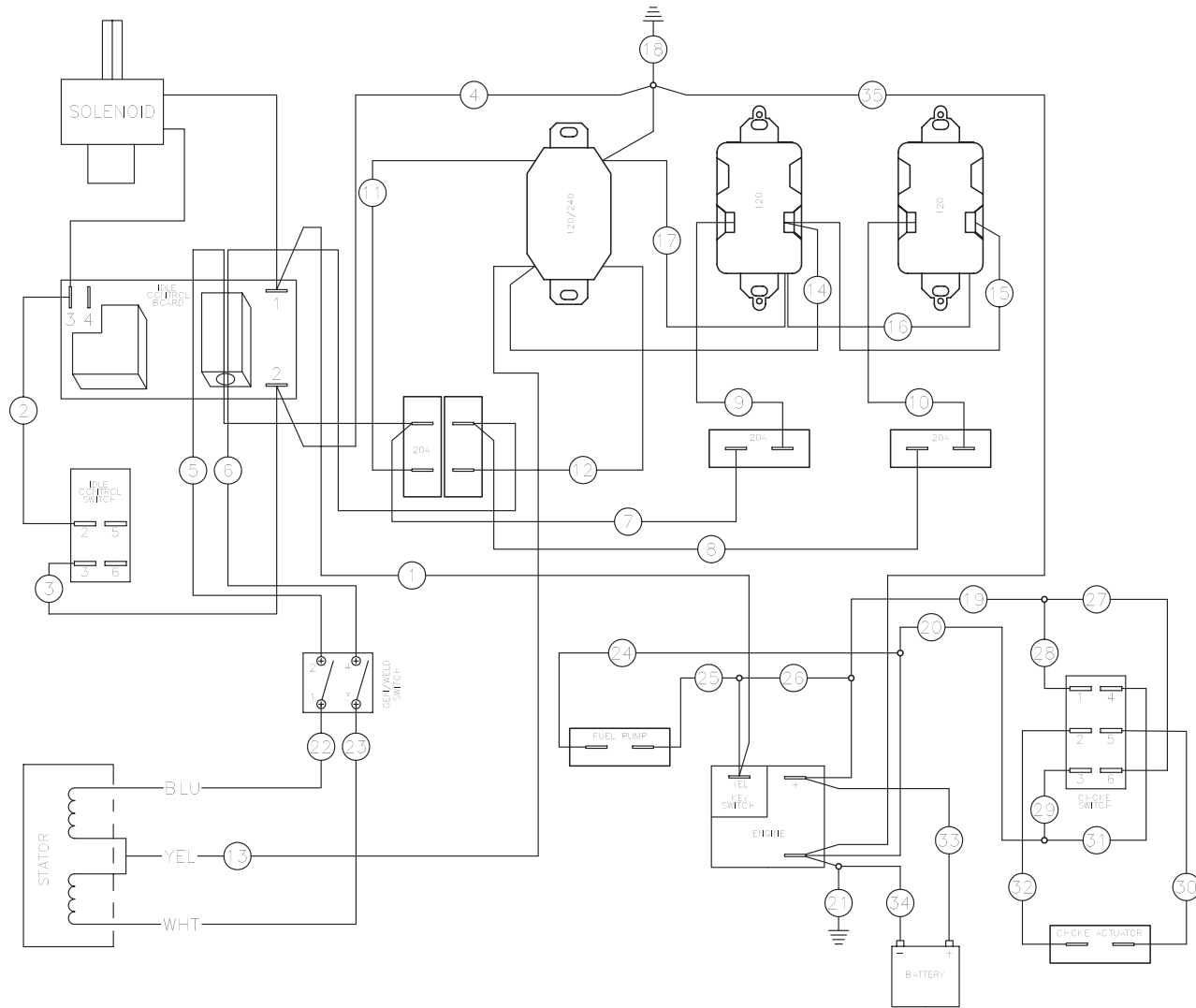
PILOT VALVE (22-0270)



22-0270 062905 DLG

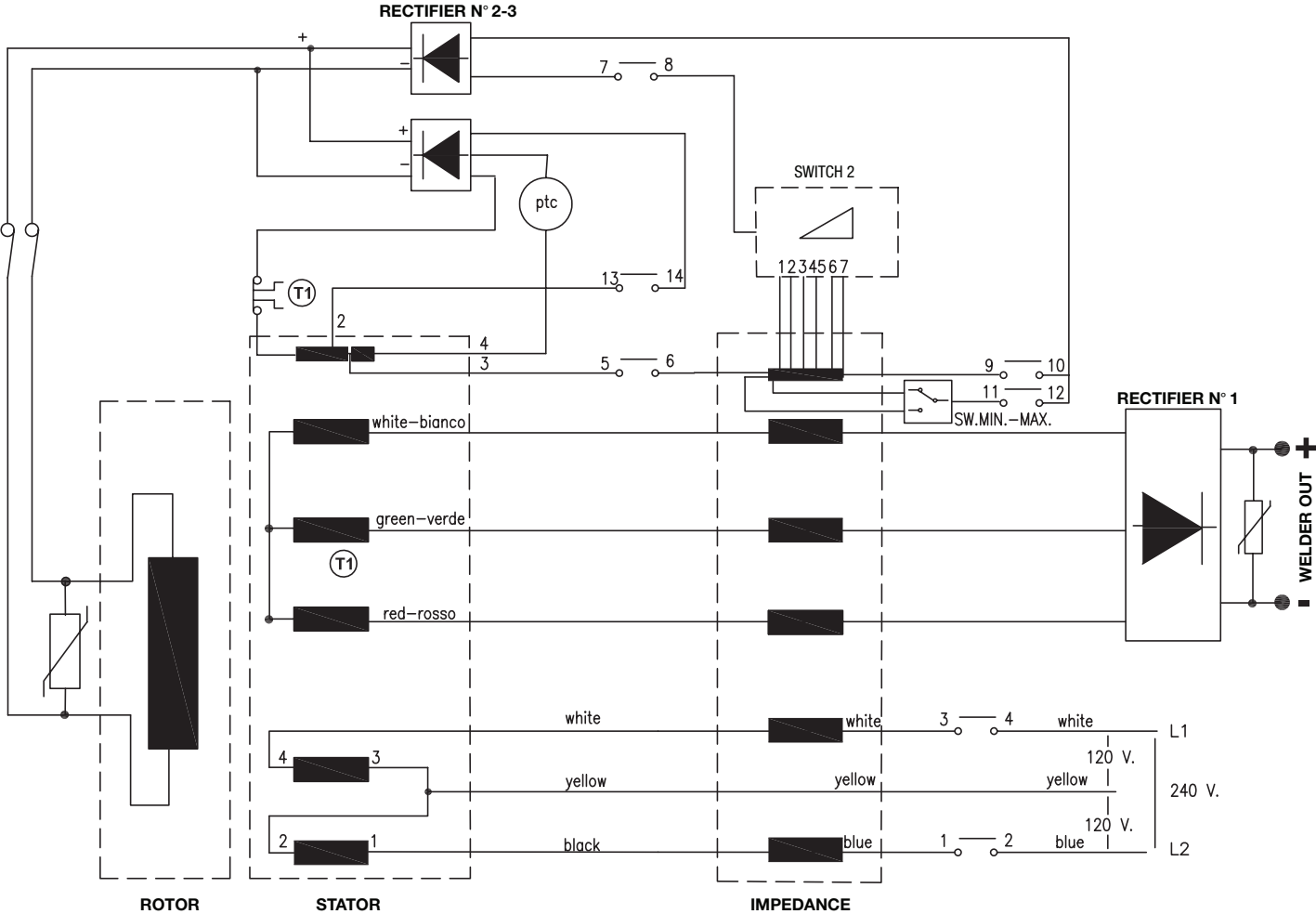
PILOT VALVE (22-0270)			
REF #	DESCRIPTION	PART #	QTY
1	Inlet Port Fitting	N/A	1
2	O-ring (See 70-0241)	N/A Sep.	3
3	Main Body	N/A	1
4	Piston Assembly-Unloader Valve (See 70-0241)	N/A Sep.	1
5	Spring-Unloader Valve (See 70-0241)	N/A Sep.	1
6	Spring Seat-Unloader Valve	N/A	1
7	Cap	N/A	1
8	Discharge Port Fitting	N/A	1
9	Spring Seat Assembly-Check Valve	N/A	1
10	Spring-Check Valve (See 70-0241)	N/A Sep.	1
11	Piston-Check Valve (See 70-0241)	N/A Sep.	1
12	Muffler	23-0419	1
13	Stem Unloader (See 70-0241)	N/A Sep.	1
14	Diaphragm (See 70-0241)	N/A Sep.	1
15	O-ring (See 70-0241)	N/A Sep.	1
16	Screen (See 70-0241)	N/A Sep.	1
17	Screw w/Washer	N/A	4
18	Pilot Body	N/A	1
19	Ball (See 70-0241)	N/A Sep.	1
20	O-ring (See 70-0241)	N/A Sep.	1
21	Differential Adjusting Locknut	N/A	1
22	Differential Adjusting Nut	N/A	1
23	Pressure Adjusting Locknut	N/A	1
24	Pressure Adjusting Toggle Assembly (See 70-0241)	N/A Sep.	1
25	Red Toggle Cover	N/A	1
	Repair Kit (Includes 4-5, 10-11, 13-16, 19-20, 24 and 3 each 2)	70-0241	

WIRING DIAGRAM



WIRING DIAGRAM AGW-SH22-20M 03:1913 KMD

WIRING SCHEMATIC



WIRING SCHEMATIC AGW-SR14-30M 092211

Manufactured by Mi-T-M
8650 Enterprise Drive, Peosta IA 52068
563-556-7484/ Fax 563-556-1235