



PARTS LIST FOR
CW-3504-5MGH
CW-3504-5MGS

Engine Oil Grade:

Honda/ Subaru: SAE10W-30

Engine Oil Capacity:

Honda: 37 oz.

Subaru: 40.6 oz.

Pump Oil Grade:

Mi-T-M Pump Oil #AW-4085-0016

Pump Oil Capacity:

40.6 oz.

Nozzle Size:

4.0

This Parts Listing has been compiled for your benefit. You can be assured your Mi-T-M Cold Water Pressure Washer was constructed and designed with quality and performance in mind using over 25 years experience in the pressure washer business. Each component has been rigorously tested to insure the highest level of acceptance.

The contents of this Parts Listing are based on the latest product information available at the time of publication. Mi-T-M reserves the right to make changes in price, color, materials, equipment, specifications or models at any time without notice.

WARNING

THIS IS A PROFESSIONAL HIGH PRESSURE, COLD WATER PRESSURE WASHER. CAUTION SHOULD BE OBSERVED WHEN USING OR REPAIRING THIS UNIT! READ AND FOLLOW THE SAFETY WARNINGS LISTED BELOW BEFORE ATTEMPTING ANY REPAIRS ON THIS PRESSURE WASHER!

SAFETY WARNINGS

1. NEVER alter or modify the equipment. Be sure any accessory items and system components being used will withstand the pressure developed. Use only genuine Mi-T-M parts for repair of your pressure washer. Failure to do so can cause hazardous operating conditions and will VOID warranty.
2. NEVER make adjustments on machinery while the unit is connected to the engine without first removing the ignition cables from the spark plugs. Turning over the machinery by hand during adjustment or cleaning might start the machinery, causing serious injury to the operator.
3. Know how to stop and bleed pressures quickly. Be thoroughly familiar with controls.
4. Before servicing the unit, turn unit off, relieve the water pressure and allow the unit to cool down. Do not make repairs while the unit is running. Service in a clean, dry, flat area.
5. After testing the machine, DO NOT leave the pressurized unit unattended. Shut off the unit and release trapped pressure before leaving.

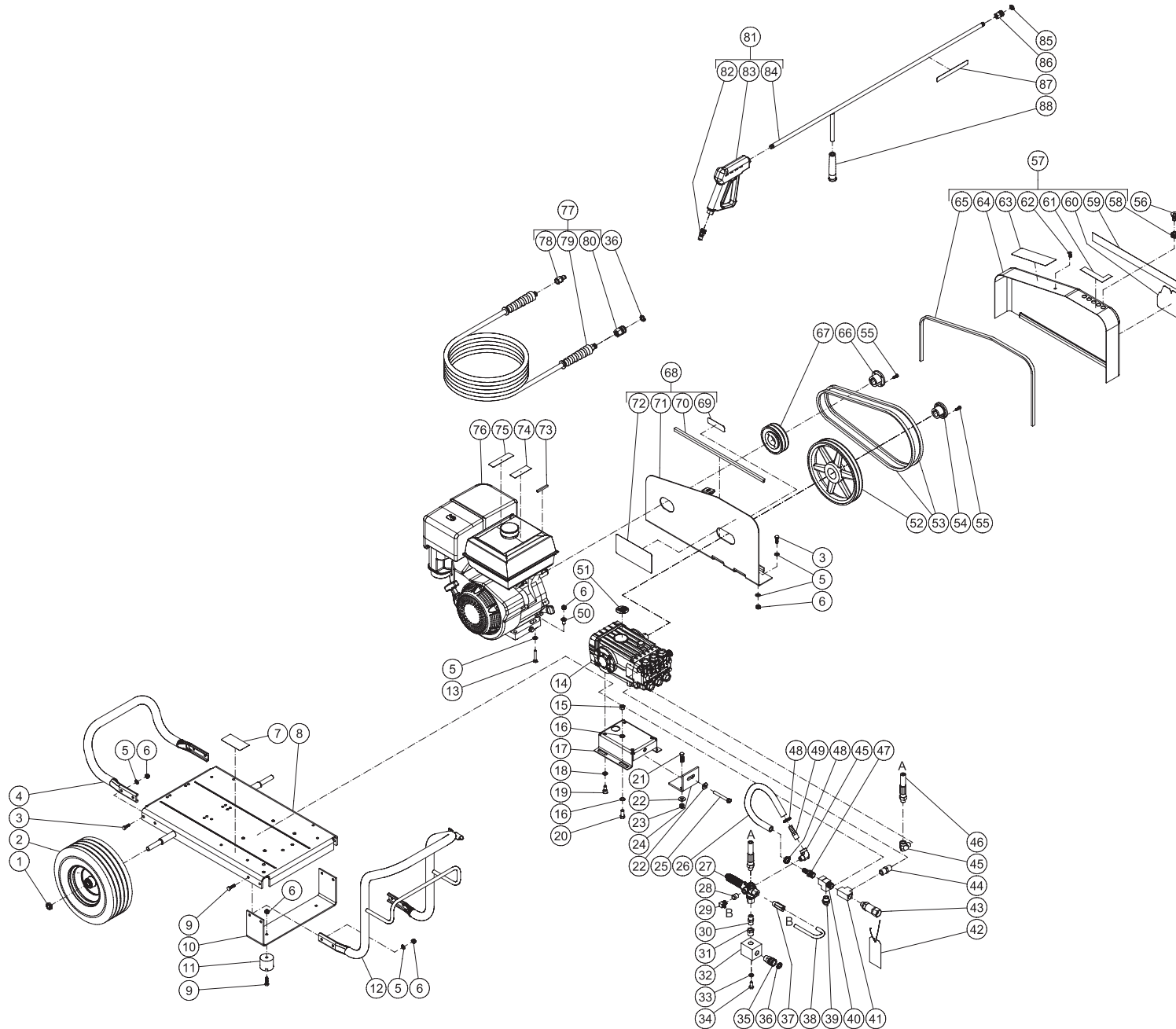
Table of Contents

SPECIFICATIONS.....	3
FRAME ASSEMBLY FOR CW-3504-5MGH/5MGS.....	4
PUMP ASSEMBLY (3-0203) (AFTER SERIAL #10375000).....	6
UNLOADER ASSEMBLY (8-0634).....	8

SPECIFICATIONS

MODEL NUMBER	CW-3504-5MGH	CW-3504-5MGS
Operating Pressure (PSI/Bar):	3500/241.3	
High Pressure Nozzle:	4.0	
Water Volume (GPM/lpm):	3.8/14.4	
Engine:	Honda	Subaru
Model	GX390	EX40
Engine Type	4 Stroke, Overhead Valve, Single Cylinder	
Oil Type	SAE10W-30	Above 40°F = SAE30 Below 40°F = SAE10W-30
Oil Capacity (oz./liter)	37.2/1.1	40.6/1.2
Low Oil Protection	Oil Alert™	Oil Sensor
Fuel Type	Unleaded Gasoline 86 Octane Minimum	
Fuel Capacity (gal./liter)	1.61/6.1	1.85/7.0
Starting	Recoil	
Maximum No Load RPM	3600 (+/- 100) RPM	
Pump:	Belt Driven, Oil Bath, Triplex Piston	
Oil Type	Mi-T-M Pump Oil #AW-4085-0016	
Oil Capacity (oz./liters)	40.6/1.2	
Plungers	Ceramic	
Manifold	Forged Brass	
Valves	Stainless Steel	
Unloader	Preset	
Heat Dump Valve	Relieves heated water during unloader bypass stage	
Unit Net Weight (lbs/Kg)	215.5/97.5	217.5/98.5
Unit Shipping Weight (lbs/Kg)	291/132	293/133
Unit Net Dimension (cm)	46Lx28Wx30H/117Lx71Wx76H	
Unit Shipping Dimension (cm)	48.5Lx30.5Wx35.5H/123Lx77.5Wx90H	

FRAME ASSEMBLY FOR CW-3504-5MGH/5MGS



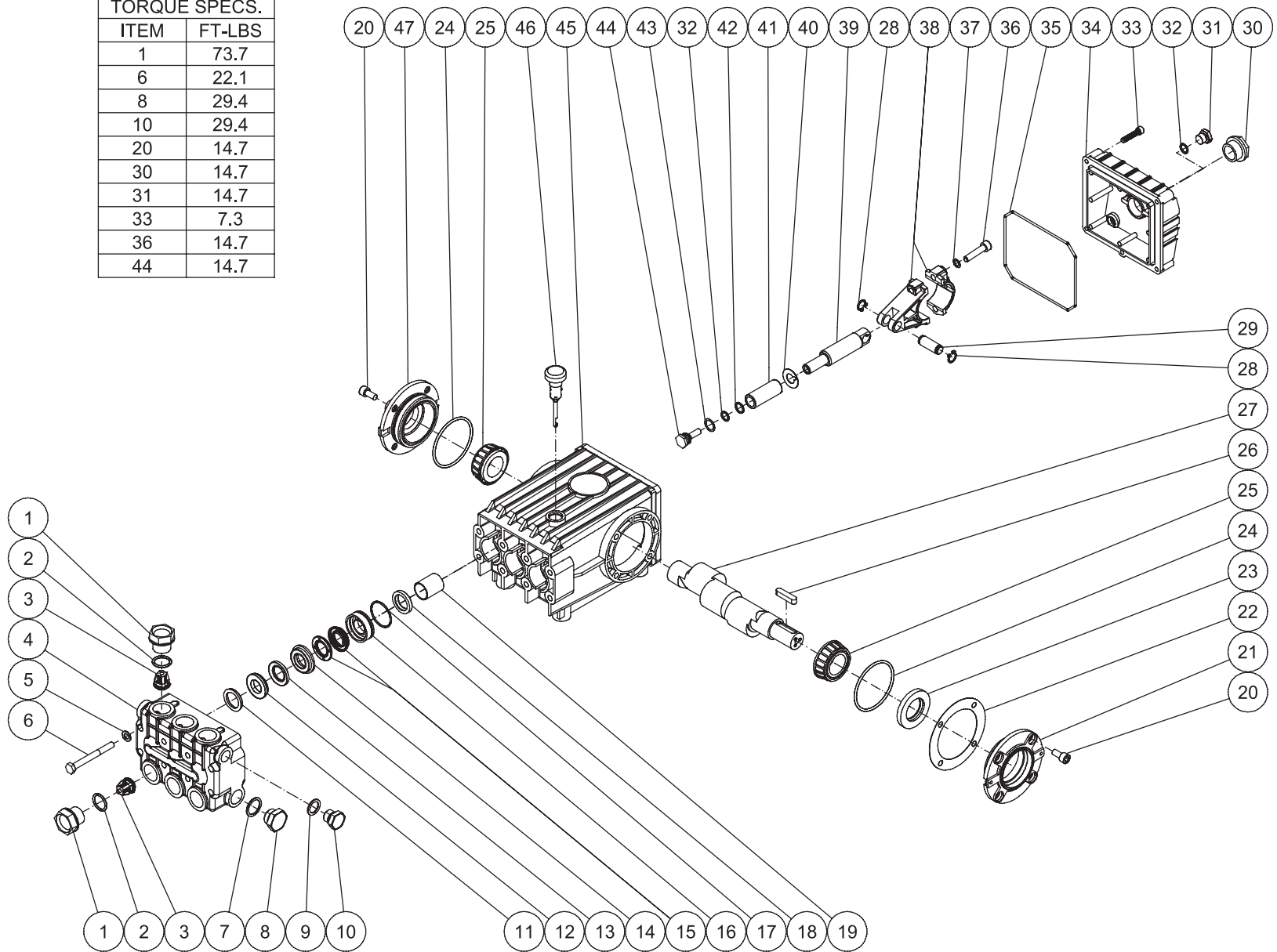
CW-3504-5MGH_S 110614 RJA

FRAME ASSEMBLY							
ITEM	DESCRIPTION	PART #	QTY	ITEM	DESCRIPTION	PART #	QTY
1	LOCKNUT	30-0117	2	48	HOSE CLAMP	42-0011	2
2	WHEEL	14-0127	2	49	HOSE BARB	23-0105	1
3	BOLT	27-0067	8	50	ENGINE SHIM	33-0169	4
4	HANDLE	7-0175A01	1	51	DECAL - PUMP	34-2290	1
5	WASHER	28-0003	20	52	SHEAVE	10-0040	1
6	LOCKNUT	30-0157	18	53	BELT	11-0035	2
7	DECAL- SILVER STICKER	N/A	1	54	BUSHING	9-0017	1
8	BASEPLATE	5-0078A01	1	55	BOLT	27-0015	4
9	BOLT	27-0068	6	56	NOZZLE 00040 QC	18-0397	1
10	UNDERBRACKET	13-0137A01	1	-	NOZZLE 15040 QC	18-0399	1
11	ISOLATOR	14-0008	2	-	NOZZLE 25040 QC	18-0400	1
12	HANDLE	7-0174A01	1	-	NOZZLE 40040 QC	18-0401	1
13	BOLT	27-0070	4	57	BELT GUARD COVER ASSEMBLY (INC 58-65)	851-0218	1
14	PUMP	3-0203	1	58	GROMMET	33-0001	5
15	LOCKNUT	30-0161	4	59	DECAL - Mi-T-M STRIPE (SEE 71-1038)	34-2585	1
16	WASHER	28-0030	8	60	DECAL - Mi-T-M (SEE 71-1038)	34-2169	1
17	PUMP BRACKET	5-0101A01	1	61	DECAL - NOZZLE (SEE 71-1038)	34-0500	1
18	LOCKWASHER	29-0055	4	62	FASTENER	33-0197	1
19	BOLT	27-8471	4	63	DECAL - OPERATION (SEE 71-1038)	N/A	1
20	BOLT	27-0166	4	64	BELTGUARD COVER	6-0064A01	1
21	BOLT	27-0118	2	65	EDGING *(FOUR FEET REQUIRED)	33-0020	1
22	WASHER	28-0023	3	66	BUSHING	9-0005	1
23	LOCKNUT	30-0159	2	67	SHEAVE	10-0030	1
24	BRACKET	13-0003A01	1	68	BELT GUARD BACK ASSEMBLY (INC 69-72)	851-0215	1
25	BOLT	27-0576	1	69	DECAL - WARNING (SEE 71-1038)	N/A	1
26	HOSE	15-0022	1	70	EDGING *(TWO FEET REQUIRED)	33-0020	1
27	UNLOADER	8-0634	1	71	BELTGUARD BACK	N/A	1
28	REDUCER	23-0017	1	72	DECAL - WARNING (SEE 71-1038)	N/A	1
29	ELBOW	23-0237	1	73	KEY	43-0078	1
30	NIPPLE	24-0010	1	74	DECAL - RISK OF FIRE (SEE 71-1038)	N/A	1
31	REDUCER	24-0282	1	75	DECAL - RISK OF BURNS (SEE 71-1038)	N/A	1
32	MANIFOLD BLOCK	51-0012	1	76	ENGINE - HONDA	1-0086	1
33	LOCKWASHER	29-0008	2	-	ENGINE - SUBARU	1-0176	1
34	BOLT	27-0116	2	77	HOSE ASSEMBLY (INC 78-80)	851-0006	1
35	QUICK CONNECT SOCKET	17-0029	1	78	QUICK CONNECT	17-0006	1
36	O-RING	25-0123	2	79	HOSE	15-0209	1
37	EASY START VALVE	22-0242	1	80	QC SOCKET	17-0004	1
38	HOSE	15-0140	1	81	GUN/WAND ASSEMBLY (INC 82-84)	851-0371	1
39	RELIEF VALVE	22-0005	1	82	QUICK CONNECT	17-0005	1
40	TEE	23-0124	1	83	GUN	16-0001	1
41	TEE	23-0043	1	84	WAND (INC GRIP & QC)	16-0439	1
42	TAG - WATER SUPPLY INLET (E)	34-0097	1	85	O-RING	25-0122	1
43	FILTER	19-0206	1	86	QUICK CONNECT	17-0001	1
44	NIPPLE	23-0012	1	87	DECAL - RISK OF INJECTION (SEE 71-1038)	N/A	1
45	ELBOW	24-0105	2	88	GRIP	7-0002	1
46	HIGH PRESSURE HOSE	15-0194	1	-	DECAL SET	71-1038	1
47	BARB	23-0045	1				

*MUST ORDER IN ONE FOOT LENGTHS

PUMP ASSEMBLY (3-0203) (AFTER SERIAL #10375000)

TORQUE SPECS.	
ITEM	FT-LBS
1	73.7
6	22.1
8	29.4
10	29.4
20	14.7
30	14.7
31	14.7
33	7.3
36	14.7
44	14.7

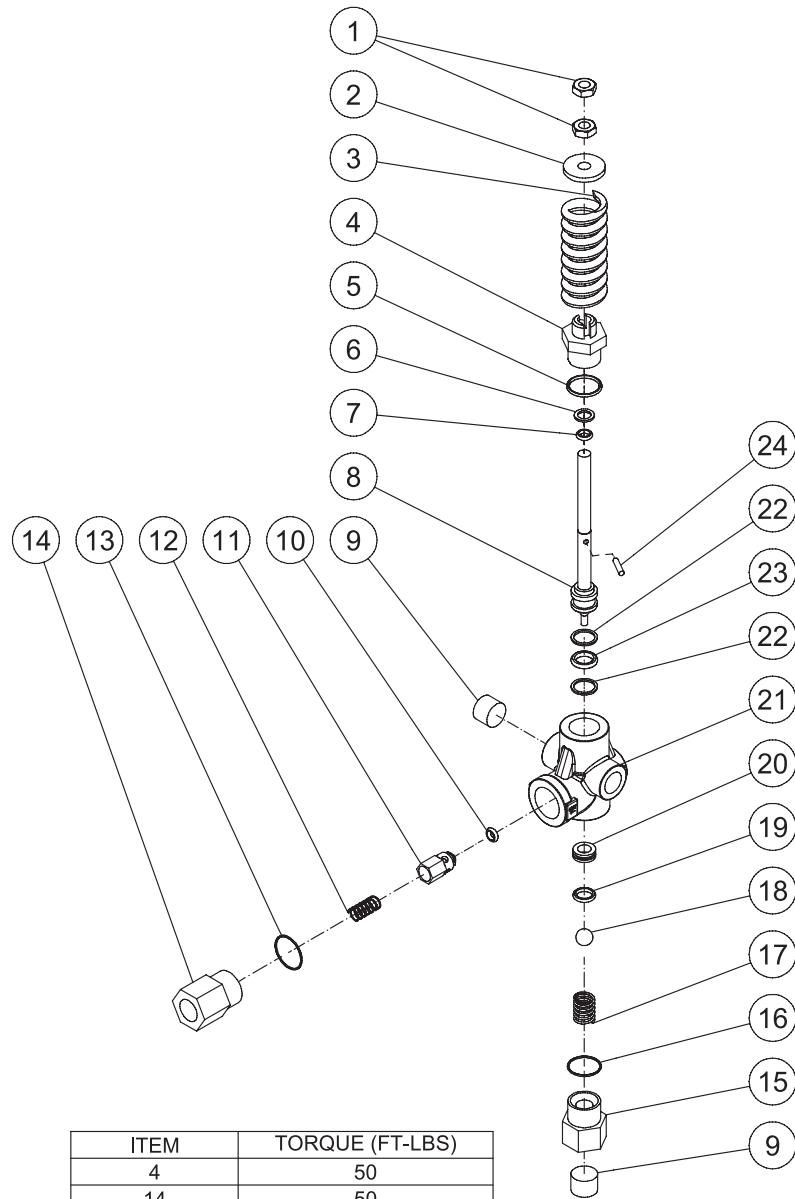


3-0202_3-0203-082713- JDK

PUMP ASSEMBLY							
ITEM	DESCRIPTION	PART #	QTY	ITEM	DESCRIPTION	PART #	QTY
1	VALVE CAP	46-0889	6	25	BEARING	48-0012	2
2	O-RING	25-0012	6	26	KEY	43-0048	1
3	VALVE (SEE KIT 71-0009)	SEE KIT	6	27	CRANKSHAFT	46-0050	1
4	MANIFOLD	46-0890	1	28	RETAINING RING	46-0103	6
5	WASHER	28-1039	8	29	CONNECTING ROD PIN	43-0032	3
6	BOLT	27-8185	8	30	OIL LEVEL INDICATOR	46-0114	1
7	WASHER	28-1038	2	31	PLUG	39-0017	1
8	PLUG	39-0019	2	32	O-RING	25-0014	4
9	WASHER	28-1002	2	33	BOLT	27-8404	5
10	PLUG	39-0018	2	34	CRANKCASE OPEN COVER	46-0295	1
11	HEAD RING (SEE KIT 71-0030 OR 852-0122)	SEE KIT	3	35	O-RING	25-0339	1
12	V-PACKING SUPPORT (SEE KIT 70-0147 OR 852-0122)	SEE KIT	3	36	BOLT	27-8435	6
13	O-RING (SEE KIT 70-0147 OR 70-0148 OR 852-0122)	SEE KIT	3	37	LOCKWASHER	29-0154	6
14	HIGH PRESSURE INTERMEDIATE SEAL RETAINER (SEE KIT 70-0148)	SEE KIT	3	38	CONNECTING ROD	46-0051	3
15	PRESSURE SEAL (SEE KIT 70-0147 OR 852-0122)	SEE KIT	3	39	PISTON ROD	46-0056	3
16	LOW PRESSURE SEAL RETAINER	46-0057	3	40	SLINGER WASHER	46-0146	3
17	O-RING (SEE 852-0122)	SEE KIT	3	41	PLUNGER	46-0052	3
18	OIL SEAL	26-0047	3	42	BACK-UP RING	46-0109	3
19	BUSHING	9-0029	3	43	WASHER	28-0400	3
20	BOLT	27-8431	8	44	NUT / PISTON	46-0069	3
21	CRANKCASE COVER	46-0296	1	45	CRANKCASE	46-0047	1
22	SHIM	46-0113	1	46	OIL DIP STICK	46-0144	1
23	OIL SEAL	26-0049	1	47	CRANKCASE COVER	46-0336	1
24	O-RING	25-0013	2				

REPLACEMENT KITS				
Mi-T-M KIT #	DESCRIPTION	ITEMS	# OF ASSEMBLIES	# OF CYLINDERS
70-0009	KIT - VALVES	3	6	3
70-0030	KIT - HEAD RING	11	3	3
70-0147	KIT - V-PACKING	12, 13, 15	3	3
70-0148	KIT - INTERMEDIATE RETAINER	13, 14	3	3
852-0122	V-PACKING ASSY	11-13, 15, 17	3	3

UNLOADER ASSEMBLY (8-0634)



ITEM	TORQUE (FT-LBS)
4	50
14	50
15	50

8-0634 052213 JDK			
UNLOADER ASSEMBLY			
ITEM	DESCRIPTION	PART #	QTY
1	NUT	8-0293	2
2	SPRING SPACER	46-1527	1
3	SPRING	49-0171	1
4	FITTING	46-1529	1
5	O-RING (SEE KIT 70-0625)	SEE KIT	1
6	O-RING (SEE KIT 70-0625)	SEE KIT	1
7	O-RING (SEE KIT 70-0625)	SEE KIT	1
8	STEM	46-1530	1
9	PLUG	23-0244	2
10	O-RING (SEE KIT 70-0624)	SEE KIT	1
11	POPPET (SEE KIT 70-0624)	SEE KIT	1
12	SPRING (SEE KIT 70-0624)	SEE KIT	1
13	O-RING	25-0672	1
14	OUTLET FITTING	46-1531	1
15	INLET FITTING (SEE KIT 70-0625)	SEE KIT	1
16	O-RING (SEE KIT 70-0625)	SEE KIT	1
17	SPRING	49-0172	1
18	BALL (SEE KIT 70-0625)	SEE KIT	1
19	O-RING (SEE KIT 70-0625)	SEE KIT	1
20	SEAT	46-1532	1
21	FORGING	46-1533	1
22	BACKUP RING (SEE KIT 70-0625)	SEE KIT	2
23	O-RING (SEE KIT 70-0625)	SEE KIT	1
24	PIN (SEE KIT 70-0625)	SEE KIT	1

REPLACEMENT KITS			
KIT #	DESCRIPTION	ITEMS	QTY
70-0624	KIT - CHECK VALVE	10-12	1, 1, 1
70-0625	KIT - UNLOADER REBUILD	5-7, 15-16, 18-19, 22-24	1, 1, 1, 1, 1, 1, 1, 2, 1, 1

Manufactured by Mi-T-M
8650 Enterprise Drive, Peosta IA 52068
563-556-7484/ Fax 563-556-1235