



PARTS LIST FOR
CW-4004-5MGH

Engine Oil Grade:	SAE 10W-30 Above 40°F=SAE30 Below 40°F=SAE10W-30
Engine Oil Capacity:	37 oz.
Pump Oil Grade:	Mi-T-M Pump Oil #AW-4085-0016
Pump Oil Capacity:	40.6 oz.
Nozzle Size:	3.5

This Parts Listing has been compiled for your benefit. You can be assured your Mi-T-M Cold Water Pressure Washer was constructed and designed with quality and performance in mind using over 25 years experience in the pressure washer business. Each component has been rigorously tested to insure the highest level of acceptance.

The contents of this Parts Listing are based on the latest product information available at the time of publication. Mi-T-M reserves the right to make changes in price, color, materials, equipment, specifications or models at any time without notice.

WARNING

THIS IS A PROFESSIONAL HIGH PRESSURE, COLD WATER PRESSURE WASHER. CAUTION SHOULD BE OBSERVED WHEN USING OR REPAIRING THIS UNIT! READ AND FOLLOW THE SAFETY WARNINGS LISTED BELOW BEFORE ATTEMPTING ANY REPAIRS ON THIS PRESSURE WASHER!

SAFETY WARNINGS

1. NEVER alter or modify the equipment. Be sure any accessory items and system components being used will withstand the pressure developed. Use only genuine Mi-T-M parts for repair of your pressure washer. Failure to do so can cause hazardous operating conditions and will VOID warranty.
2. NEVER make adjustments on machinery while the unit is connected to the engine without first removing the ignition cables from the spark plugs. Turning over the machinery by hand during adjustment or cleaning might start the machinery, causing serious injury to the operator.
3. Know how to stop and bleed pressures quickly. Be thoroughly familiar with controls.
4. Before servicing the unit, turn unit off, relieve the water pressure and allow the unit to cool down. Do not make repairs while the unit is running. Service in a clean, dry, flat area.
5. After testing the machine, DO NOT leave the pressurized unit unattended. Shut off the unit and release trapped pressure before leaving.

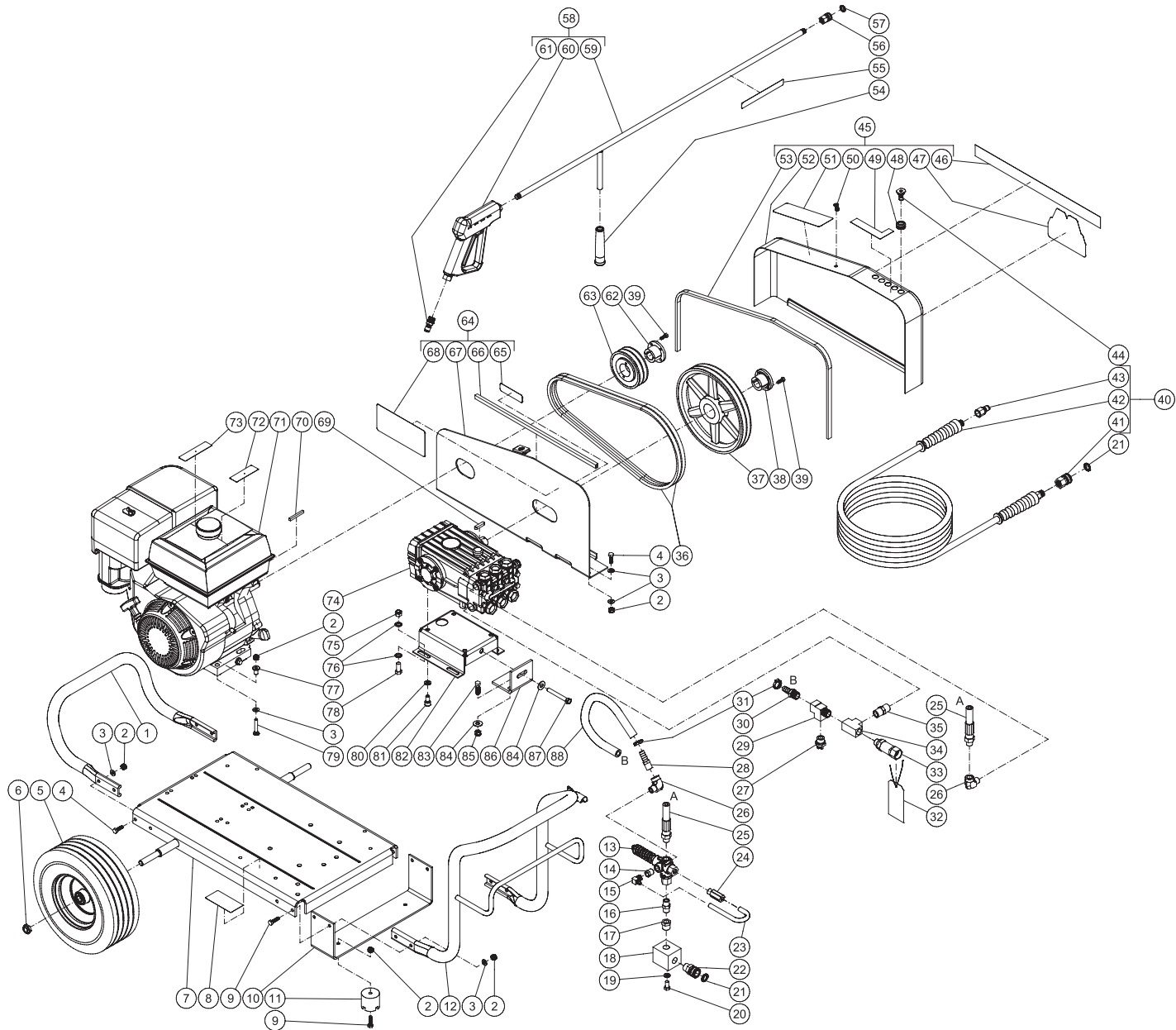
Table of Contents

SPECIFICATIONS.....	3
FRAME ASSEMBLY FOR CW-4004-5MGH	4
PUMP ASSEMBLY (3-0075)	6
UNLOADER ASSEMBLY (8-0634)	8

SPECIFICATIONS

MODEL NUMBER	CW-4004-5MGH
Operating Pressure (PSI/Bar):	4000/275.8
High Pressure Nozzle:	3.5
Water Volume (GPM/lpm):	3.5/13.2
Engine:	Honda
Model	GX390
Engine Type	4 Stroke, Overhead Valve, Single Cylinder
Oil Type	SAE10W-30
Oil Capacity (oz./liter)	37.2 / 1.1
Low Oil Protection	Oil Alert™
Fuel Type	Unleaded Gasoline 86 Octane Minimum
Fuel Capacity (gal./liter)	1.61 / 6.1
Starting	Recoil
Maximum No Load RPM	3600 (+/- 100) RPM
Pump:	Direct Driven, Oil Bath, Triplex Piston
Oil Type	Mi-T-M Pump Oil #AW-4085-0016
Oil Capacity (oz./liters)	40.6/1.2
Plungers	Ceramic Coated
Manifold	Forged Brass
Valves	Stainless Steel
Unloader	Preset
Thermal Relief Valve	Relieves heated water during unloader bypass stage
Unit Net Weight (lbs/Kg)	215.5/97.5
Unit Shipping Weight (lbs/Kg)	291/132
Unit Net Dimension (cm)	46Lx28Wx30H/117Lx71Wx76H
Unit Shipping Dimension (cm)	48.5Lx30.5Wx35.5H/123Lx77.5Wx90H

FRAME ASSEMBLY FOR CW-4004-5MGH



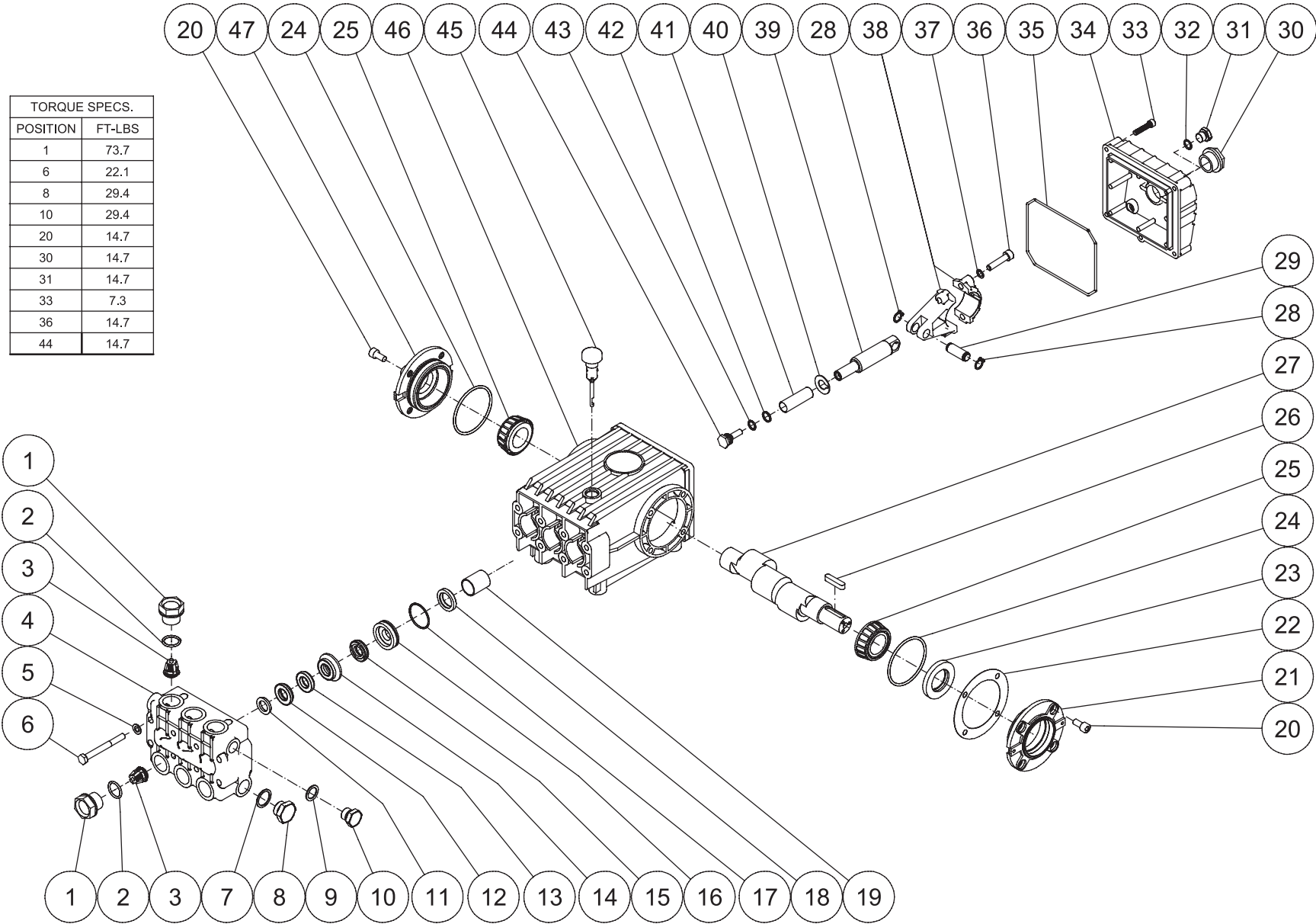
CW-4004-5MGH 110314 RJA

FRAME ASSEMBLY

ITEM	DESCRIPTION	PART #	QTY	ITEM	DESCRIPTION	PART #	QTY
1	HANDLE	7-0175A01	1	45	BELTGUARD COVER ASSY-MEDIUM (INC 46-53)	851-0218	1
2	LOCKNUT	30-0157	18	46	DECAL - MI-T-M STRIPE (SEE 71-1039)	N/A	1
3	WASHER	28-0003	20	47	DECAL - MI-T-M (SEE 71-1039)	N/A	1
4	BOLT	27-0067	8	48	GROMMET	33-0001	5
5	WHEEL	14-0127	2	49	DECAL - NOZZLE (SEE 71-1039)	N/A	1
6	LOCKNUT	30-0117	2	50	FASTENER	33-0197	1
7	BASEPLATE	5-0078A01	1	51	DECAL - OPERATION (SEE 71-1039)	N/A	1
8	DECAL- SILVER STICKER	N/A	1	52	BELTGUARD COVER	N/A	1
9	BOLT	27-0068	6	53	EDGING *(FOUR FEET REQUIRED)	33-0020	1
10	UNDERBRACKET	13-0137A01	1	54	GRIP	7-0002	1
11	ISOLATOR	14-0008	2	55	DECAL - RISK OF INJECTION (SEE 71-1039)	N/A	1
12	HANDLE	7-0174A01	1	56	QUICK CONNECT	17-0001	1
13	UNLOADER	8-0634	1	57	O-RING	25-0122	1
14	REDUCER	23-0017	1	58	GUN, BLACK WAND GRIP W/ QC (INC 59-61)	851-0371	1
15	ELBOW	23-0237	1	59	WAND (INC GRIP & QC)	16-0439	1
16	NIPPLE	24-0010	1	60	GUN	16-0001	1
17	REDUCER	24-0282	1	61	QUICK CONNECT	17-0005	1
18	MANIFOLD BLOCK	51-0012	1	62	BUSHING	9-0005	1
19	LOCKWASHER	29-0008	2	63	SHEAVE	10-0030	1
20	BOLT	27-0116	2	64	BELTGUARD BACK ASSEMBLY-MEDIUM (INC 65-68)	851-0215	1
21	O-RING	25-0123	2	65	DECAL - WARNING (SEE 71-1039)	N/A	1
22	QUICK CONNECT SOCKET	17-0029	1	66	EDGING *(TWO FEET REQUIRED)	33-0020	1
23	HOSE	15-0140	1	67	BELTGUARD BACK	N/A	1
24	EASY START VALVE	22-0242	1	68	DECAL - WARNING (SEE 71-1039)	N/A	1
25	HIGH PRESSURE HOSE	15-0194	1	69	KEY	43-0048	1
26	ELBOW	24-0105	2	70	KEY	43-0078	1
27	RELIEF VALVE	22-0005	1	71	ENGINE - HONDA	1-0086	1
28	HOSE BARB	23-0105	1	72	DECAL - RISK OF FIRE (SEE 71-1039)	N/A	1
29	TEE	23-0124	1	73	DECAL - RISK OF BURNS (SEE 71-1039)	N/A	1
30	BARB	23-0045	1	74	PUMP	3-0075	1
31	HOSE CLAMP	42-0011	2	75	LOCKNUT	30-0161	4
32	TAG - WATER SUPPLY INLET (E)	34-0097	1	76	WASHER	28-0030	8
33	FILTER	19-0206	1	77	ENGINE SHIM	33-0169	4
34	TEE	23-0043	1	78	BOLT	27-0166	4
35	NIPPLE	23-0012	1	79	BOLT	27-0070	4
36	BELT	11-0035	2	80	LOCKWASHER	29-0055	4
37	SHEAVE	10-0040	1	81	BOLT	27-8471	4
38	BUSHING	9-0017	1	82	PUMP BRACKET	5-0101A01	1
39	BOLT	27-0015	4	83	BOLT	27-0118	2
40	ASSY HOSE W/QC 4000 PSI (INC 41-43)	851-0006	1	84	WASHER	28-0023	3
41	QC SOCKET	17-0004	1	85	LOCKNUT	30-0159	2
42	HOSE	15-0004	1	86	BRACKET	13-0003A01	1
43	QUICK CONNECT	17-0006	1	87	BOLT	27-0576	1
44	NOZZLE 00035 QC	18-0392	1	88	HOSE	15-0022	1
-	NOZZLE 15035 QC	18-0393	1	-	DECAL SET	71-1039	1
-	NOZZLE 25035 QC	18-0395	1	*MUST ORDER IN ONE FOOT LENGTHS			
-	NOZZLE 40035 QC	18-0396	1				

PUMP ASSEMBLY (3-0075)

TORQUE SPECS.	
POSITION	FT-LBS
1	73.7
6	22.1
8	29.4
10	29.4
20	14.7
30	14.7
31	14.7
33	7.3
36	14.7
44	14.7



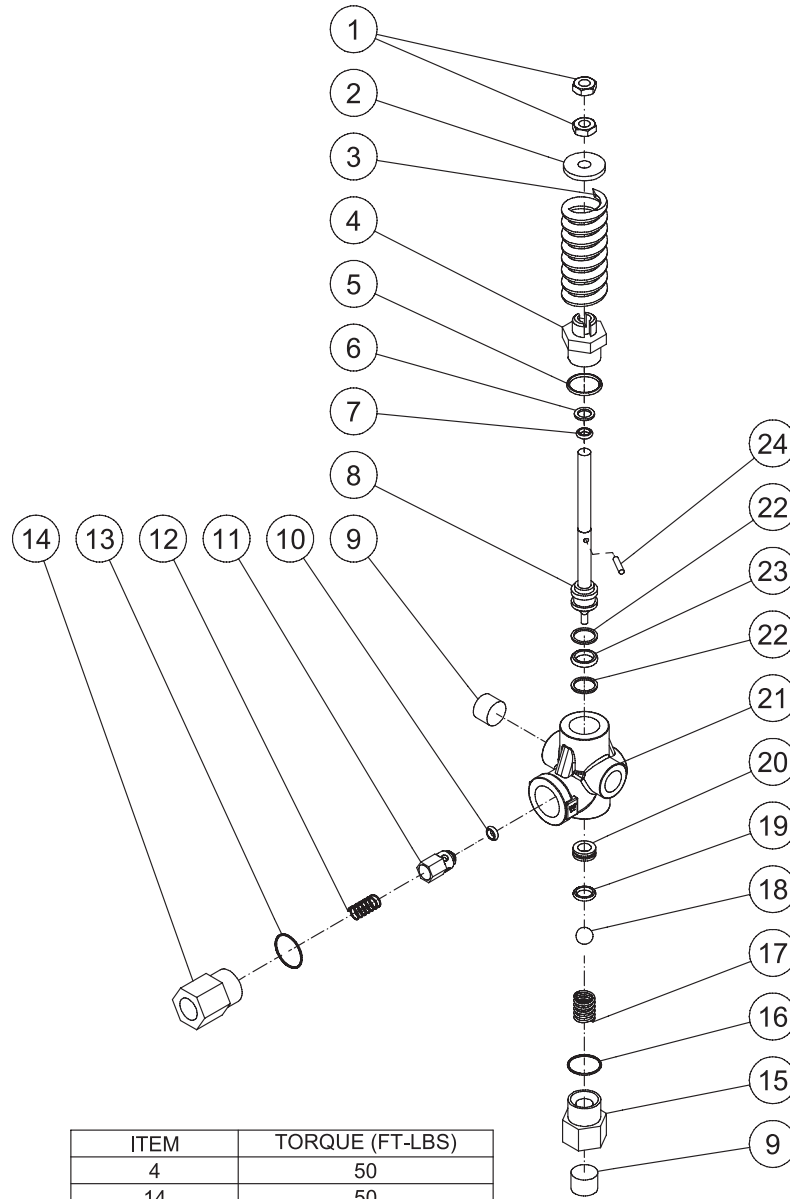
3-0075-032510-AJH

PUMP ASSEMBLY

ITEM	DESCRIPTION	PART #	QTY	ITEM	DESCRIPTION	PART #	QTY
1	CAP VALVE	46-0282	6	25	BEARING	48-0012	2
2	O-RING	25-0012	6	26	KEY	43-0048	1
3	VALVE (SEE KIT 70-0009)	-	6	27	CRANKSHAFT	46-0050	1
4	MANIFOLD	46-0291	1	28	RETAINING RING	46-0103	6
5	WASHER	28-1039	8	29	CONNECTING ROD PIN	43-0032	3
6	BOLT	27-8185	8	30	OIL LEVEL INDICATOR	46-0114	1
7	WASHER	28-1038	2	31	PLUG	39-0017	1
8	PLUG	39-0019	2	32	O-RING	25-0014	1
9	WASHER	28-1002	2	33	BOLT	27-8404	5
10	PLUG	39-0018	2	34	CRANKCASE OPEN COVER	46-0295	1
11	HEAD RING (SEE KIT 70-0031 AND 852-0064)	70-0031	3	35	O-RING	25-0339	1
12	PACKING (SEE KIT 70-0042 AND 852-0064)	46-0338	3	36	BOLT	27-8435	6
13	LONG LIFE RING (SEE KIT 70-0042 AND 852-0064)	46-0290	3	37	LOCKWASHER	29-0154	6
14	INTERMEDIATE RING (SEE KIT 70-0210)	46-0289	3	38	CONNECTING ROD	46-0051	3
15	V-PACKING (SEE KIT 70-0042 AND 852-0064)	46-0287	3	39	PISTON GUIDE	46-0294	3
16	PACKING RETAINER	46-0286	3	40	SLINGER WASHER	46-0283	3
17	O-RING (SEE KIT 852-0064)	25-0015	3	41	CERAMIC PLUNGER	46-0337	3
18	OIL SEAL	26-0047	3	42	RING	25-0137	3
19	BUSHING	9-0029	3	43	O-RING	25-0138	2
20	BOLT	27-8431	8	44	PISTON SCREW	46-0285	3
21	CRANKCASE COVER	46-0296	1	45	OIL DIP STICK	46-0144	1
22	SHIM	46-0113	1	46	CRANKCASE	46-0047	1
23	OIL SEAL	26-0049	1	47	CRANKCASE COVER	46-0336	1
24	O-RING	25-0013	2				

Mi-T-M KIT #	DESCRIPTION	ITEMS	# OF ASSEMBLIES	# OF CYLINDERS
70-0009	KITS -VALVES	3	6	3
70-0031	KITS -HEAD RING	11	3	3
70-0042	KITS - V-PACKING	12, 13, 15	3	3
70-0210	KITS -INTERMEDIATE RETAINER	14	3	3
852-0064	V-PACKING ASSY	11, 12, 13, 15, 17	3	3

UNLOADER ASSEMBLY (8-0634)



ITEM	TORQUE (FT-LBS)
4	50
14	50
15	50

8-0634 052213 JDK

8-0634 052213 JDK			
UNLOADER ASSEMBLY			
ITEM	DESCRIPTION	PART #	QTY
1	NUT	8-0293	2
2	SPRING SPACER	46-1527	1
3	SPRING	49-0171	1
4	FITTING	46-1529	1
5	O-RING (SEE KIT 70-0625)	SEE KIT	1
6	O-RING (SEE KIT 70-0625)	SEE KIT	1
7	O-RING (SEE KIT 70-0625)	SEE KIT	1
8	STEM	46-1530	1
9	PLUG	23-0244	2
10	O-RING (SEE KIT 70-0624)	SEE KIT	1
11	POPPET (SEE KIT 70-0624)	SEE KIT	1
12	SPRING (SEE KIT 70-0624)	SEE KIT	1
13	O-RING	25-0672	1
14	OUTLET FITTING	46-1531	1
15	INLET FITTING (SEE KIT 70-0625)	SEE KIT	1
16	O-RING (SEE KIT 70-0625)	SEE KIT	1
17	SPRING	49-0172	1
18	BALL (SEE KIT 70-0625)	SEE KIT	1
19	O-RING (SEE KIT 70-0625)	SEE KIT	1
20	SEAT	46-1532	1
21	FORGING	46-1533	1
22	BACKUP RING (SEE KIT 70-0625)	SEE KIT	2
23	O-RING (SEE KIT 70-0625)	SEE KIT	1
24	PIN (SEE KIT 70-0625)	SEE KIT	1

REPLACEMENT KITS			
KIT #	DESCRIPTION	ITEMS	QTY
70-0624	KIT - CHECK VALVE	10-12	1, 1, 1
70-0625	KIT - UNLOADER REBUILD	5-7, 15-16, 18-19, 22-24	1, 1, 1, 1, 1, 1, 1, 2, 1, 1

Manufactured by Mi-T-M
8650 Enterprise Drive, Peosta IA 52068
563-556-7484/ Fax 563-556-1235