



PARTS LIST FOR  
***AM1-VE02-200D***

Phase:	Single
Volts:	115
Maximum Amps:	15
Maximum Pressure:	125 PSI
Compressor Oil Grade:	SAE30W Non-Detergent
Compressor Oil Capacity:	7.0 oz.

This Parts Listing has been compiled for your benefit. You can be assured your air compressor was constructed and designed with quality and performance in mind. Each component has been rigorously tested to insure the highest level of acceptance.

The contents of this Parts Listing are based on the latest product information available at the time of publication. The manufacturer reserves the right to make changes in price, color, materials, equipment, specifications or models at any time without notice.

### **WARNING**

**THIS IS A PROFESSIONAL ELECTRIC AIR COMPRESSOR. CAUTION SHOULD BE OBSERVED WHEN USING OR REPAIRING THIS UNIT!  
READ AND FOLLOW THE SAFETY WARNINGS LISTED BELOW BEFORE ATTEMPTING ANY REPAIRS ON THIS ELECTRIC AIR  
COMPRESSOR!**

### **SAFETY WARNINGS**

1. NEVER alter or modify the equipment. Be sure any accessory items and system components being used will withstand the pressure developed. Use only genuine manufacturer replacement parts for repair of your air compressor. Failure to do so can cause hazardous operating conditions and will VOID warranty.
2. Do not operate the unit without all protective covers in place. Know how to stop and bleed pressures quickly. Be thoroughly familiar with controls.
3. Before servicing the unit, turn unit off, relieve the pressure and allow the unit to cool down. Do not make repairs while the unit is running. Service in a clean, dry, flat area.
4. After testing the machine, DO NOT leave the pressurized unit unattended. Shut off the unit and release trapped pressure before leaving.

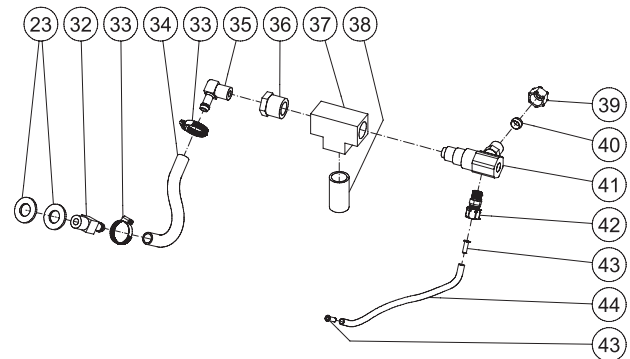
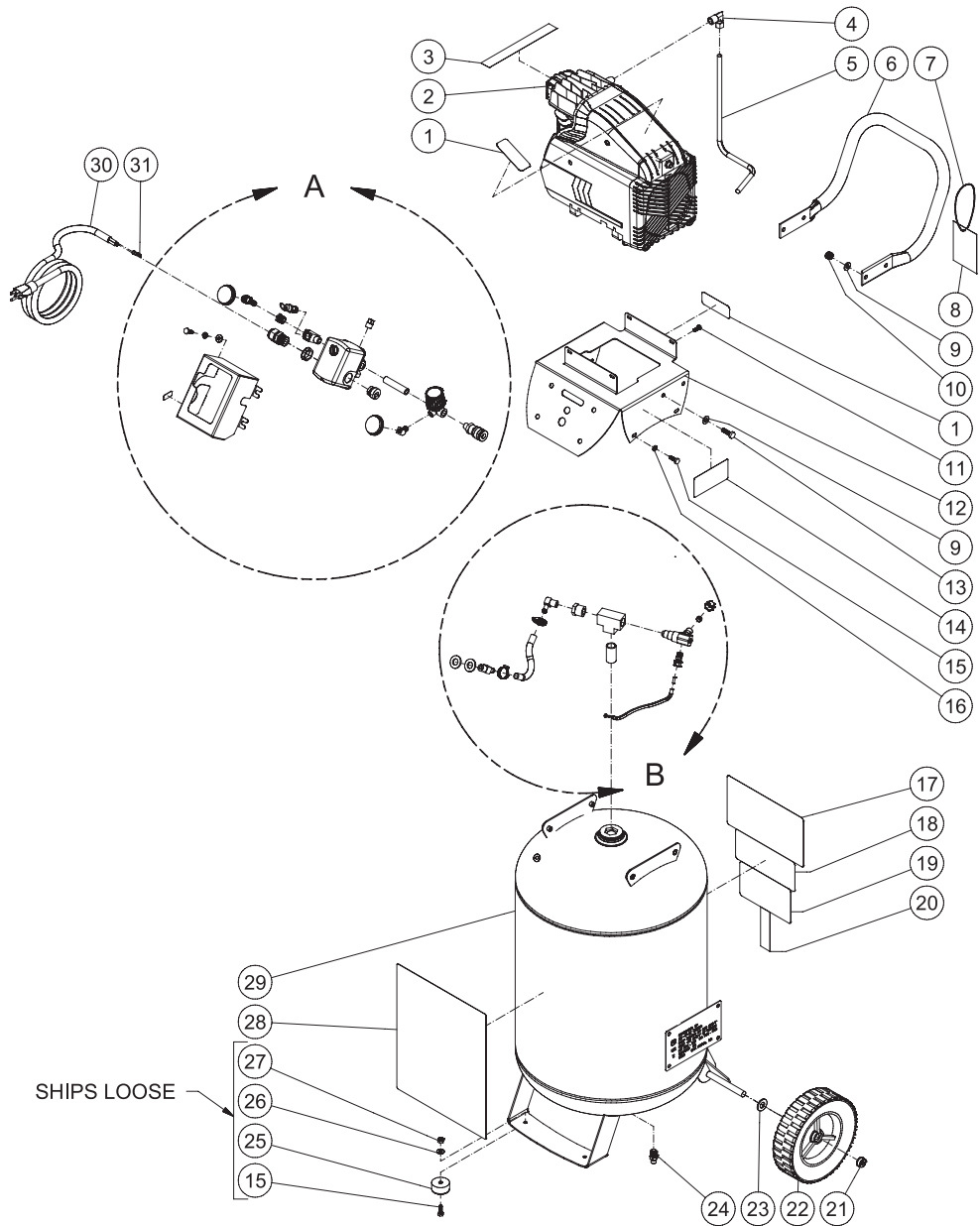
### **Table of Contents**

<b>SPECIFICATIONS.....</b>	<b>3</b>
<b>TANK ASSEMBLY .....</b>	<b>4</b>
<b>MOTOR/PUMP ASSEMBLY (3-0395).....</b>	<b>6</b>
<b>NOTES .....</b>	<b>8</b>

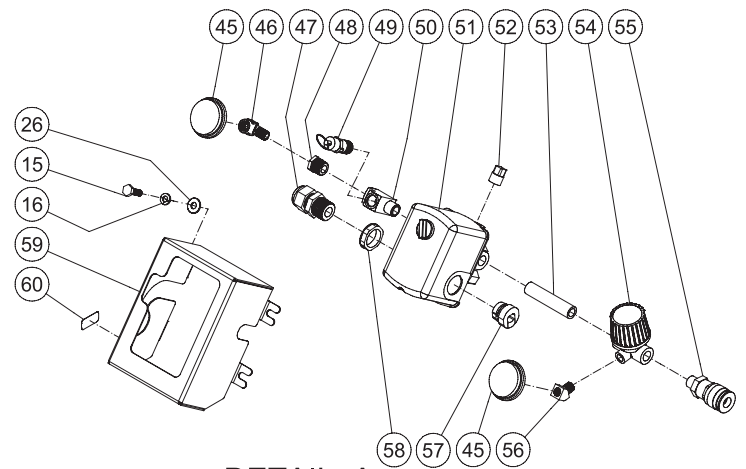
## SPECIFICATIONS

MODEL NUMBER	AM1-VE02-200D
Motor:	
Horsepower	2.0
Voltage	115
Amperage	15
Hz	60
Phase	Single
Motor RPM	3420
Compressor Pump:	
Number of Cylinders	1
Compression Stages	1
Bore/Stroke	1.96"/1.33"
Compression RPM	3400
Lubrication	Splash
Oil Quantity	7.0 oz.
Oil Type	SAE30W Non-Detergent
Crankcase	Aluminum
Bearings	Ball
Cylinder	Cast Iron
Valves	Reed
Head	Aluminum
Filter	Canister
Pressure Switch Setting:	
Cut-out	125 PSI
Cut-in	95 PSI
Air Tank:	
Capacity	20 Gallons
Performance:	
CFM Displacement	8.13
CFM @ 40 PSI	5.3
CFM @ 100 PSI	4.0
Maximum Pressure	125 PSI
Pump-up Time: 0-125 PSI	3 min 50 second
Recovery Time: 90-125 PSI	64 seconds
Working Pressure Range	95-125 PSI
Weight:	
Net	104 lbs
Shipping	114 lbs
Dimensions:	
Basic L x W x H	22" x 21" x 42"
Shipping L x W x H	24" x 22" x 43"

# TANK ASSEMBLY



DETAIL B



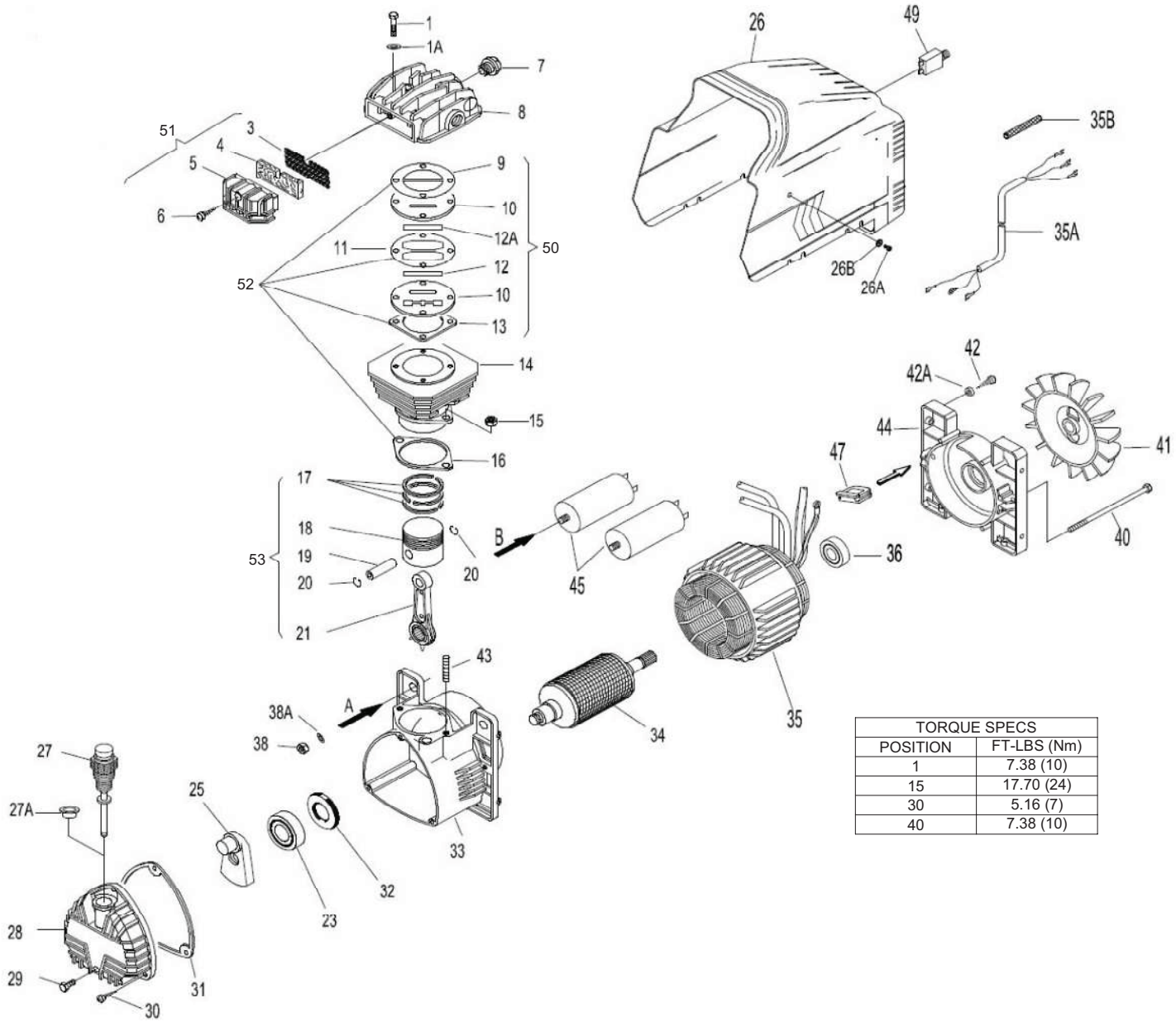
DETAIL A

AM1-VE02-200D 071014 RSW

SHIPS LOOSE

FRAME ASSEMBLY							
ITEM	DESCRIPTION	Mi-T-M #	QTY	ITEM	DESCRIPTION	Mi-T-M #	QTY
1	DECAL - RISK OF BURNS (SEE 71-0074)	N/A	2	32	HOSE BARB	23-0299	1
2	MOTOR/PUMP	3-0395	1	33	HOSE CLAMP	42-0011	2
3	DECAL - CHECK OIL	N/A	1	34	HOSE *(ONE FOOT REQUIRED)	15-0288	1
4	ELBOW	23-0479	1	35	ELBOW HOSE BARB	23-0300	1
5	COPPER PIPE - 3/8" OD *(TWO FEET REQUIRED)	54-0066	1	36	REDUCER	23-0056	1
6	HANDLE	7-0195A75	1	37	TEE	23-0043	1
7	STRING	N/A	1	38	NIPPLE	24-0328	1
8	TAG	N/A	1	39	NUT	23-0480	1
9	WASHER	28-0003	8	40	FERRULE	23-0481	1
10	LOCKNUT	30-0157	4	41	CHECK VALVE	22-0490	1
11	BOLT	27-8390	4	42	ADAPTER	23-0328	1
12	HAT	20-1126A74	1	43	TUBE SUPPORT	23-0486	2
13	BOLT	27-0067	4	44	HOSE *(ONE FOOT REQUIRED)	15-0240	1
14	DECAL - SILVER STICKER	N/A	1	45	PRESSURE GAUGE	22-0446	2
15	BOLT	27-0015	10	46	ELBOW	23-0118	1
16	LOCKWASHER	29-0006	8	47	STRAIN RELIEF	32-0437	1
17	DECAL - CAUTION/WARNING/DANGER (SEE 71-0074)	N/A	1	48	REDUCER	23-0111	1
18	DECAL - OPERATING INSTRUCTIONS (SEE 71-0074)	N/A	1	49	SAFETY VALVE	22-0228	1
19	DECAL - MAINTENANCE INSTRUCTIONS (SEE 71-0074)	N/A	1	50	TEE	23-0127	1
20	DECAL - TANK DRAIN (SEE 71-0074)	N/A	1	51	PRESSURE SWITCH	22-0440	1
21	HUB CAP	33-0055	2	52	PLUG	23-0238	1
22	WHEEL	14-0052	2	53	NIPPLE	24-0314	1
23	WASHER	28-0006	4	54	REGULATOR	22-0326	1
24	PETCOCK	23-0312	1	55	AIR QC SOCKET	17-0043	1
25	ISOLATOR	14-0069	2	56	ELBOW	23-0133	1
26	WASHER	28-0002	4	57	BUSHING	9-0045	1
27	LOCKNUT	30-0155	2	58	ELECTRICAL LOCKNUT	32-0108	1
28	DECAL - MARKETING	34-2760	1	59	COVER	20-1127A74	1
29	20 GALLON TANK	12-0215A74	1	60	DECAL - 115 VOLT (SEE 71-0074)	N/A	1
30	CORD PLUG SET	32-0444	1	-	DECAL SET- AM1-VE02-200D	71-0074	1
31	TERMINAL	32-0003	3	*MUST ORDER IN ONE FOOT LENGTHS			

# MOTOR/PUMP ASSEMBLY (3-0395)



3-0395 123013 JDK

## COMPRESSOR ASSEMBLY

ITEM	DESCRIPTION	PART #	QTY	ITEM	DESCRIPTION	PART #	QTY
1	SCREW	27-5027	4	27A	PLUG	N/A	1
1A	WASHER	28-0002	4	28	CRANKCASE COVER	46-1540	1
3	FILTER PLATE (SEE KIT 70-0633)	SEE KIT	1	29	OIL DRAIN CAP	39-0365	1
4	FILTERING ELEMENT (SEE KIT 70-0633)	19-0272	1	30	SCREW	27-8196	3
5	FILTER HOUSING (SEE KIT 70-0633)	SEE KIT	1	31	CRANKCASE COVER GASKET	26-0391	1
6	SCREW (SEE KIT 70-0633)	27-8901	1	32	OIL SEAL	26-0393	1
7	START VALVE	46-1534	1	33	CRANKCASE	46-1542	1
8	PUMP HEAD	46-1535	1	34	CRANKSHAFT ASSY.	52-0102	1
9	GASKET (SEE KIT 70-0630)	SEE KIT	1	35	STATOR WINDINGS	52-0105	1
10	VALVE PLATE (SEE KIT 70-0631)	SEE KIT	2	35A	ELECTRIC CABLE	52-0106	1
11	GASKET (SEE KIT 70-0630)	SEE KIT	1	35B	PLASTIC SLEEVE	N/A	1
12	VALVE (SEE KIT 70-0631)	SEE KIT	1	36	BALL BEARING	48-0098	1
12A	VALVE (SEE KIT 70-0631)	SEE KIT	1	38	NUT	30-0058	2
13	GASKET (SEE KIT 70-0630)	SEE KIT	1	38A	WASHER	28-0003	2
14	CYLINDER	46-1536	1	40	TENSION ROD	52-0103	2
15	NUT	30-0058	2	41	FAN	52-0104	1
16	GASKET (SEE KIT 70-0630)	SEE KIT	1	42	SCREW	N/A	1
17	PISTON RINGS KIT (SEE KIT 70-0632)	SEE KIT	1	42A	WASHER GROUND CONNECTION	28-1011	1
18	PISTON (SEE KIT 70-0632)	SEE KIT	1	43	STUD BOLT	46-1546	2
19	PISTON PIN (SEE KIT 70-0632)	SEE KIT	1	44	REAR COVER	52-0107	1
20	RETAINING RING (SEE KIT 70-0632)	SEE KIT	2	45	CAPACITOR	32-1140	2
21	CONNECTING ROD (SEE KIT 70-0632)	SEE KIT	1	47	RUBBER SEAL	52-0108	1
23	BALL BEARING	48-0097	1	49	THERMAL PROTECTION	32-1139	1
25	COUNTER WEIGHT	46-1537	1	50	KIT - VALVE PLATES - (INC. 10, 12A, 12)	70-0631	1
26	PLASTIC SHROUD	46-1538	1	51	KIT - INTAKE FILTER - (INC. 3-6)	70-0633	1
26A	SCREW	27-8189	2	52	KIT - GASKETS - (INC. 9, 11, 13, 16)	70-0630	1
26B	WASHER	28-0067	2	53	KIT - PISTON/CONNECTING ROD - (INC. 17-21)	70-0632	1
27	OIL DIPSTICK	46-1539	1				

Manufactured by Mi-T-M  
8650 Enterprise Drive, Peosta IA 52068  
563-556-7484/ Fax 563-556-1235