



PARTS LIST FOR ***CM-1400-1MEH***

Motor Horsepower:	1.5 H.P.
Pump Oil Grade:	Mi-T-M Pump Oil #AW-4085-0016
Pump Oil Capacity:	11.2 oz.
Nozzle Size:	.95 mm

This Parts Listing has been compiled for your benefit. You can be assured your cold water pressure washer was constructed and designed with quality and performance in mind. Each component has been rigorously tested to insure the highest level of quality.

The contents of this Parts Listing are based on the latest product information available at the time of publication. The manufacturer reserves the right to make changes in price, color, materials, equipment, specifications or models at any time without notice.

WARNING

THIS IS A PROFESSIONAL HIGH PRESSURE, COLD WATER PRESSURE WASHER. CAUTION SHOULD BE OBSERVED WHEN USING OR REPAIRING THIS UNIT! READ AND FOLLOW THE SAFETY WARNINGS LISTED BELOW BEFORE ATTEMPTING ANY REPAIRS ON THIS PRESSURE WASHER!

SAFETY WARNINGS

- 1. NEVER alter or modify the equipment. Be sure any accessory items and system components being used will withstand the pressure developed. Use only genuine manufacturer parts for repair of your pressure washer. Failure to do so can cause hazardous operating conditions and will VOID warranty.
- 2. NEVER make adjustments on machinery while the unit is connected to the engine without first removing the ignition cable from the spark plug. Turning over the machinery by hand during adjustment or cleaning might start the engine and machinery with it, causing serious injury to the operator.
- 3. Know how to stop and bleed pressures quickly. Be thoroughly familiar with controls.
- 4. Before servicing the unit, turn unit off, relieve the water pressure and allow the unit to cool down. Do not make repairs while the unit is running. Service in a clean, dry, flat area. Block the wheels to prevent the unit from moving. Be especially careful to properly dispose of any flammable materials.
- 5. After testing the machine, DO NOT leave the pressurized unit unattended. Shut off the unit and release trapped pressure before leaving.

Table of Contents

SPECIFICATIONS.....3

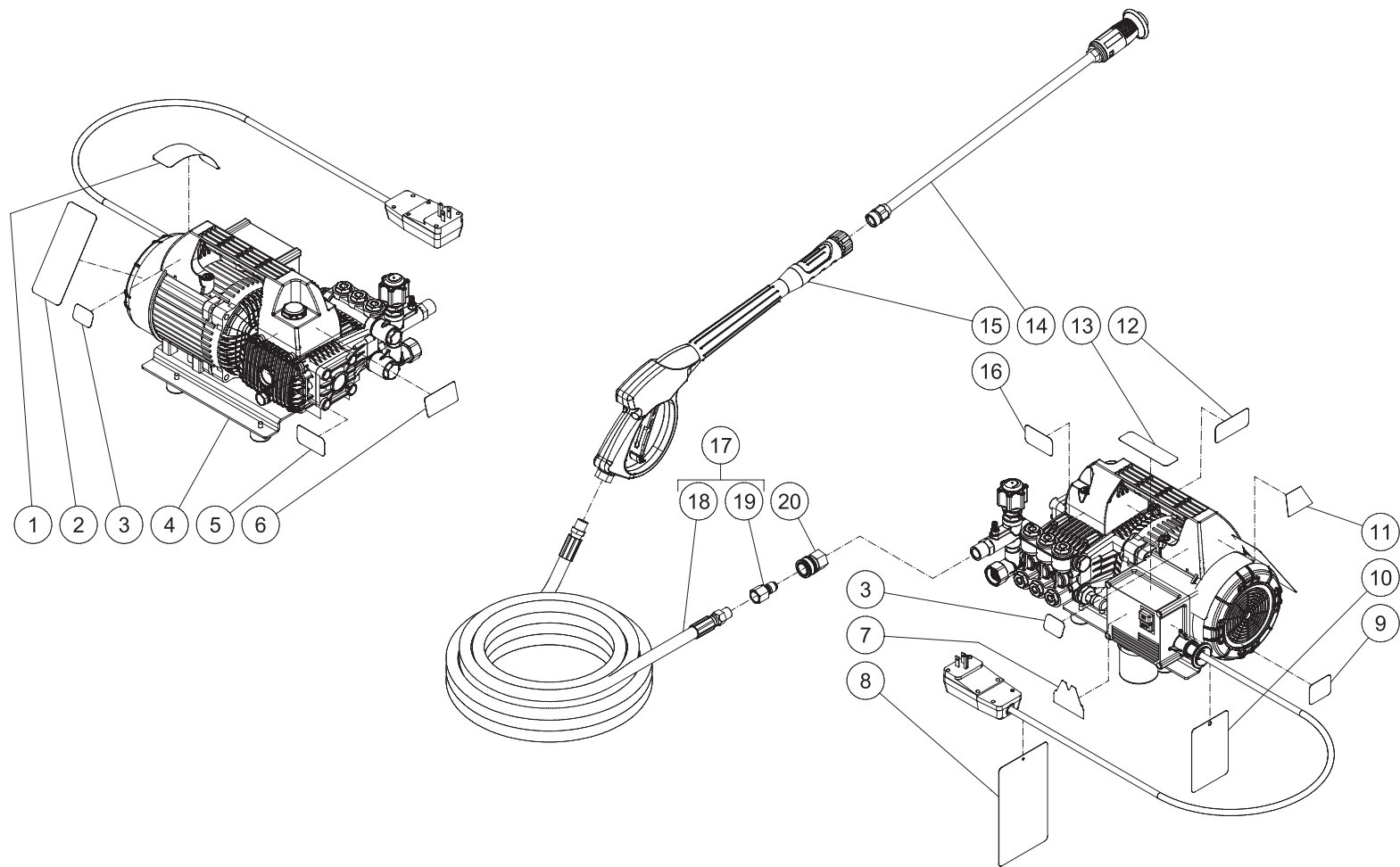
FRAME ASSEMBLY FOR CM-1400-1MEH.....4

MOTOR / PUMP ASSEMBLY (3-0404).....6

SPECIFICATIONS

MODEL NUMBER	CM-1400-1MEH
Operating Pressure (PSI/Bar):	1400/96.5
High Pressure Nozzle:	.95 mm
Water Volume (GPM/lpm):	1.5/5.6
Motor:	Totally enclosed fan cooled, circuit breaker thermal overload protection, 35ft. power supply cord with Ground Fault Circuit Interrupter (GFCI)
Horsepower	1.5
Voltage	120
Phase	Single
Amps	15.0
Pump:	Direct Driven, Oil Bath, Triplex Piston
Oil Type	Mi-T-M Pump Oil #AW-4085-0016
Oil Capacity (oz./liters)	11.2/0.33
Plungers	Ceramic
M anifold	Forged Brass
Valves	Stainless Steel
Unloader	Adjustable
Thermal Relief Valve	Relieves heated water during unloader bypass stage
Detergent Injector	Adjustable low pressure down stream from pump
Unit Net Weight (lbs/Kg)	45/20.4
Unit Shipping Weight (lbs/Kg)	52/23.5
Unit Net Dimension (in/cm)	12Lx9.5Wx9.75H/30.5Lx24Wx24.5H
Unit Shipping Dimension (in/cm)	23.5Lx14.25Wx14H/59.5Lx36Wx35.5H

FRAME ASSEMBLY FOR CM-1400-1MEH

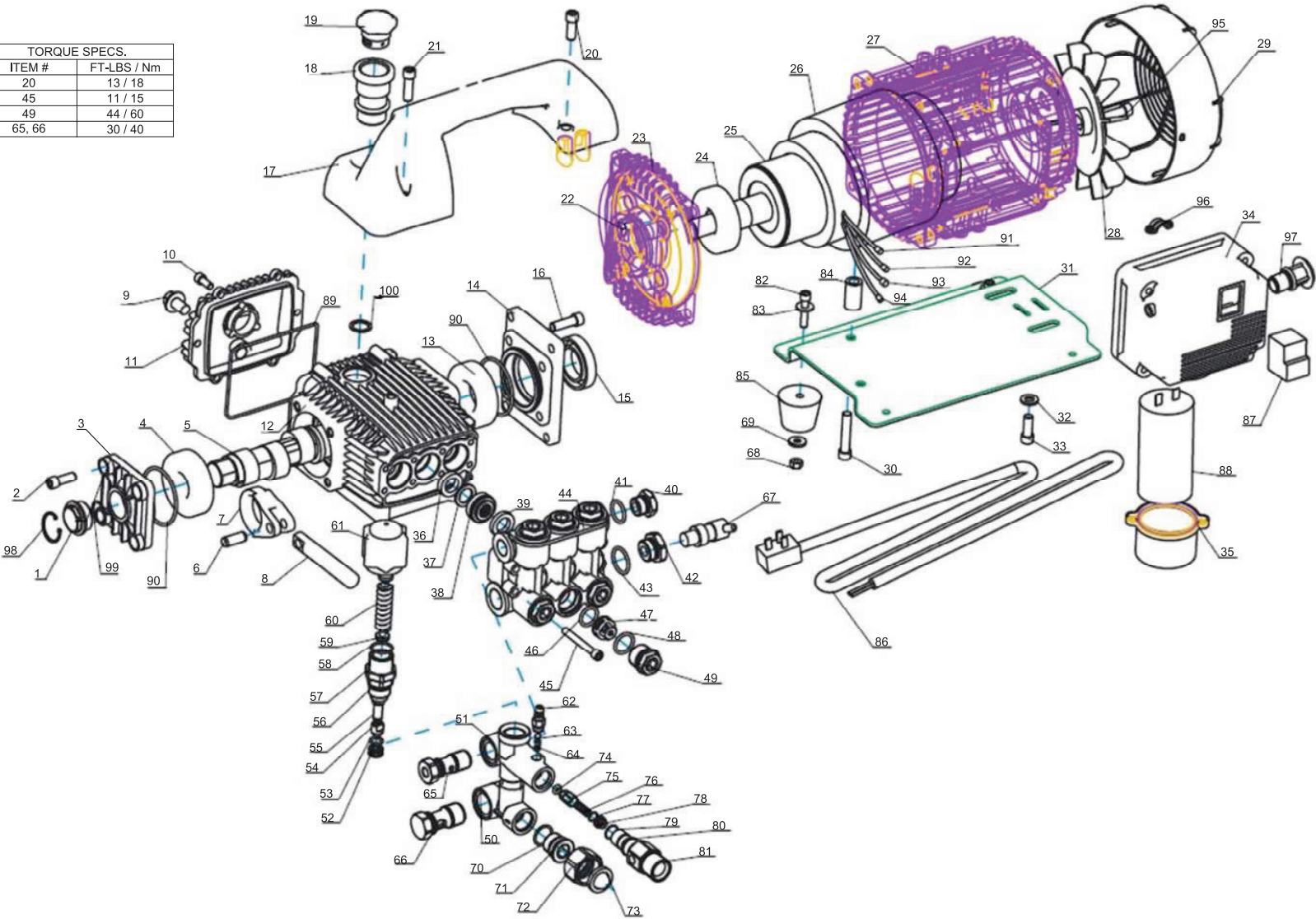


CM-1400-1MEH 012015 KMD

CM-1400-1MEH 012015 KMD			
FRAME ASSEMBLY			
ITEM	DESCRIPTION	PART #	QTY
1	DECAL - RISK OF INJURY (SEE DECAL SET 71-1051)	N/A	1
2	DECAL - RISK OF ELEC. SHOCK (SEE DECAL SET 71-1051)	N/A	1
3	DECAL - CHOREMASTER 1400PSI (SEE DECAL SET 71-1051)	N/A	2
4	MOTOR/PUMP ASSY	3-0404	1
5	DECAL - WARNING (SEE DECAL SET 71-1051)	N/A	1
6	DECAL - SMALL 800-228-6172	N/A	1
7	DECAL - Mi-T-M	N/A	1
8	TAG - WARNING RISK OF ELECTROCUTION	34-1035	1
9	DECAL - CONN. CIRCUIT BREAKER (SEE DECAL SET 71-1051)	N/A	1
10	HANG TAG-WARN/CAUTION	34-1432	1
11	DECAL- HOT SURFACE (SEE DECAL SET 71-1051)	N/A	1
12	DECAL-DATA PLATE	N/A	1
13	DECAL-RISK OF INJ (SEE DECAL SET 71-1051)	N/A	1
14	LANCE	16-0444	1
15	GUN & WAND - 4000 PSI	16-0441	1
16	DECAL:WARN.DON'T SPRAY (SEE DECAL SET 71-1051)	N/A	1
17	HOSE ASS'Y	851-0359	1
18	HOSE	15-0138	1
19	QUICK CONNECT	17-0006	1
20	QC SOCKET	17-0004	1
-	DECAL SET	71-1051	1

MOTOR / PUMP ASSEMBLY (3-0404)

TORQUE SPECS.	
ITEM #	FT-LBS / Nm
20	13 / 18
45	11 / 15
49	44 / 60
65, 66	30 / 40



3-0404 112114 KMD

3-0404 112114 KMD							
PUMP ASSEMBLY							
ITEM	DESCRIPTION	PART #	QTY	ITEM	DESCRIPTION	PART #	QTY
1	OIL LEVEL INDICATOR	46-1589	1	51	INLET T CONNECTOR	46-1448	1
2	SCREW M8 X 16MM	27-8982	4	52	SEAT (SEE KIT 70-0649)	SEE KIT	1
3	CRANKSHAFT COVER	46-1590	1	53	O-RING 10 X 1.5	(SEE KIT 70-0649)	SEE KIT 1
4	BALL BEARING	N/A	1	54	NUT (SEE KIT 70-0649)	SEE KIT	1
5	CRANKSHAFT	N/A	1	55	UNLOADER PISTON (SEE KIT 70-0649)	SEE KIT	1
6	PLUNGER PIN	N/A	3	56	UNLOADER PISTON SEAT (SEE KIT 70-0649)	SEE KIT	1
7	CONNECTING ROD	N/A	3	57	NUT (SEE KIT 70-0649)	SEE KIT	1
8	CERAMIC COATING PLUNGER	N/A	3	58	O-RING 9.5MM X 1.8MM (SEE KIT 70-0649)	SEE KIT	1
9	OIL DRAIN PLUG M10 X 30MM	39-0373	1	59	SPRING SEAT (SEE KIT 70-0649)	SEE KIT	1
10	SCREW M6 X 14MM	27-8401	6	60	SPRING (SEE KIT 70-0649)	SEE KIT	1
11	CRANKCASE COVER	46-1591	1	61	KNOB (SEE KIT 70-0649)	SEE KIT	1
12	CRANKCASE	N/A	1	62	BARB (SEE KIT 70-0578)	SEE KIT	1
13	BALL BEARING	N/A	1	63	STEEL BALL (SEE KIT 70-0578)	SEE KIT	1
14	CRANKCASE COVER	N/A	1	64	SPRING (SEE KIT 70-0578)	SEE KIT	1
15	OIL SEAL 30MM X 50MM X 10MM	26-0401	1	65	BANJO BOLT OUTLET	70-0575	1
16	SCREW M8 X 25MM	27-8433	4	66	BANJO BOLT INLET	70-0576	1
17	HANDLE - PLASTIC	7-0255	1	67	THERMAL VALVE	22-0408	1
18	OIL PLUG	39-0374	1	68	HEX NUT M6	30-6024	4
19	OIL PLUG CAP	39-0375	1	69	WASHER	28-0200	4
20	SCREW M8 X 25	27-8433	1	70	O-RING 18MM X 1.8MM	25-0221	1
21	SCREW M8 X 235MM	27-8435	1	71	SCREW	N/A	1
22	HEX SCREW M8 X 20MM (SEE KIT 70-0653)	27-8032	4	72	NUT	46-1445	1
23	MOTOR FLANGE (SEE KIT 70-0653)	SEE KIT	1	73	FLITER	19-0001	1
24	BALL BEARING 6205RZ (SEE KIT 70-0653)	SEE KIT	1	74	O-RING 4MM X 2.5MM (SEE KIT 70-0652)	SEE KIT	1
25	ROTOR (SEE KIT 70-0653)	SEE KIT	1	75	OUTLET PISTON (SEE KIT 70-0652)	SEE KIT	1
26	STATOR (SEE KIT 70-0653)	SEE KIT	1	76	OUTLET SPRING (SEE KIT 70-0652)	SEE KIT	1
27	MOTOR HOUSING (SEE KIT 70-0653)	SEE KIT	1	77	O-RING 9MM X 1.0MM	N/A	1
28	MOTOR FAN (SEE KIT 70-0653)	52-0116	1	78	OUTLET VAVLE	N/A	1
29	FAN COVER (SEE KIT 70-0653)	52-0117	1	79	O-RING 13MM X 1.0MM	25-0639	1
30	SCREW M8 X 40MM	27-9590	2	80	O-RING 15MM X 1.8MM	25-0638	1
31	BASEPLATE	52-0118	1	81	OUTLET CONNECTOR	46-1443	1
32	WASHER M8	28-1011	2	82	SCREW M6 X 25	27-8003	4
33	SCREW M8 X 20MM	27-8432	2	83	WASHER	28-0200	4
34	ELECTRICAL BOX	52-0119	1	84	BUSHING	52-0121	2
35	CAPACITOR COVER	52-0120	1	85	RUBBER ISOLATOR FOOT	14-0146	4
36	OIL SEAL 15MM X 24MM X 55MM (SEE KIT 70-0651)	SEE KIT	3	86	SUPPLY CORD - 25'	52-0122	1
37	O-RING (SEE KIT 70-0651)	SEE KIT	3	87	POWER SWITCH	52-0123	1
38	PACKING RETAINER (SEE KIT 70-0651)	SEE KIT	3	88	CAPACITOR	52-0124	1
39	OIL SEAL 15MM X 22MM X 50MM (SEE KIT 70-0651)	SEE KIT	3	89	O-RING 100MM X 2.5MM	25-0685	1
40	OUTLET PLUG	N/A	1	90	O-RING 56MM X 2.5MM	25-0158	2
41	WASHER	N/A	1	91	WHITE WIRE	N/A	1
42	INLET PLUG	N/A	1	92	BLUE WIRE	N/A	1
43	WASHER	N/A	1	93	RED WIRE	N/A	1
44	MANIFOLD	N/A	1	94	BLACK WIRE	N/A	1
45	SCREW M6 X 50MM	N/A	6	95	SCREW M8 X 20MM	27-8432	1
46	O-RING 18MM X 2.5MM (SEE KIT 70-0650)	SEE KIT	6	96	CLIP	N/A	1
47	ONE WAY VALVE (SEE KIT 70-0650)	SEE KIT	6	97	STRAIN RELIEF	N/A	1
48	O-RING 18MM X 2.5MM	25-0636	6	98	OIL LEVEL INDICATOR RETAINING RING	46-1592	1
49	ONE WAY VALVE NUT	46-1441	6	99	O-RING 20MM X 2.5MM	25-0686	1
50	OUTLET T CONNECTOR	46-1447	1	100	GASKET 36MM X 26MM X 3MM	26-0402	1

REPLACEMENT KITS				
KIT #	DESCRIPTION	ITEMS	# OF ASSEMBLIES	# OF CYLINDERS
70-0578	KIT - CHEM. INJECTOR	62-64	1	-
70-0649	KIT - UNLOADER REBUILD	52-60	1	-
70-0650	KIT - VALVES	46-47	6	3
70-0651	KIT - PACKINGS	36-39	3	3
70-0652	KIT - CHECK VAVLE	74-76	1	-
70-0653	KIT - MOTOR REPLACEMENT	22-29	1	-

Manufactured by Mi-T-M
8650 Enterprise Drive, Peosta IA 52068
563-556-7484/ Fax 563-556-1235