

Mi-T-M[®] CORPORATION

8650 Enterprise Drive, Peosta IA 52068
319-556-7484 / Fax 319-556-1235

PARTS LIST FOR **WC-300-0ME3** WATER CANNON

Congratulations on the purchase of your new Mi-T-M Water Cannon! This parts listing has been compiled for your benefit. You can be assured your Mi-T-M Water Cannon was constructed and designed with quality and performance in mind. Each component has been rigorously tested to insure the highest level of acceptance.

The contents of this parts listing are based on the latest product information available at the time of publication. Mi-T-M reserves the right to make changes in price, color, materials, equipment, specifications or models at any time without notice.

WARNING

THIS IS A PROFESSIONAL CLEANING SYSTEM. CAUTION SHOULD BE OBSERVED WHEN USING OR REPAIRING THIS UNIT! READ AND FOLLOW THE SAFETY WARNINGS LISTED BELOW BEFORE ATTEMPTING ANY REPAIRS ON THIS WATER CANNON!

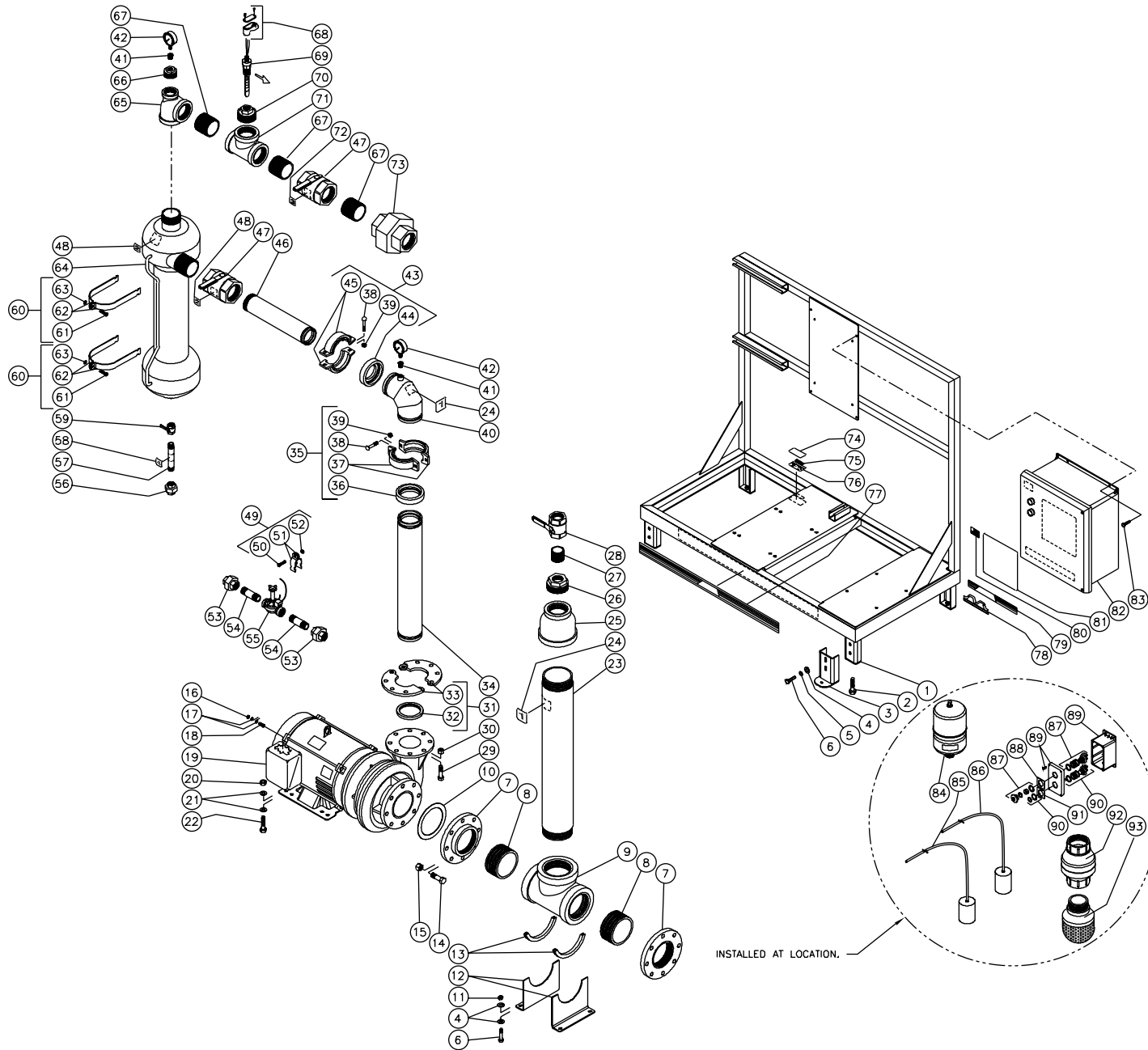
SAFETY WARNINGS

1. Serious injury or death could occur if the Water Cannon (Power Supply) is not properly grounded. Your Water Cannon is powered by electricity and may cause electric shock or electrocution if not installed properly. Installation to this unit, including all electrical connections, must comply with all local, state and national codes. Any electrical wiring or repairs performed on this Water Cannon should be done by Authorized Service Personnel in accordance with National and Local electrical codes.
2. NEVER alter or modify the equipment. Use only genuine Mi-T-M parts for repair of your Water Cannon. Failure to do so can cause hazardous operating conditions and will VOID warranty.
3. Know how to stop and bleed pressures quickly. Be thoroughly familiar with controls. Do not operate without protective gear. Follow the maintenance instructions specified in your operator's manual.
4. Before servicing, ALWAYS shut off the water and the unit. NEVER assume the Water Cannon is safe to work on just because it is not operating. It could restart at any time! ALWAYS disconnect from the power source.

Table of Contents

MAIN ASSEMBLY	4
CENTRIFUGAL PUMP (3-2003)	6
CONTROL PANEL (208V/230V)	8
ELECTRICAL SCHEMATIC (208V/230V)	10
ELECTRICAL DIAGRAM (208V/230V)	11
WX-0004 VOLTAGE OPTION (460V)	12
WX-0004 ELECTRICAL SCHEMATIC (460V)	13
WX-0004 ELECTRICAL DIAGRAM (460V)	13
WC-300-0ME3 ACCESSORIES	14

MAIN ASSEMBLY

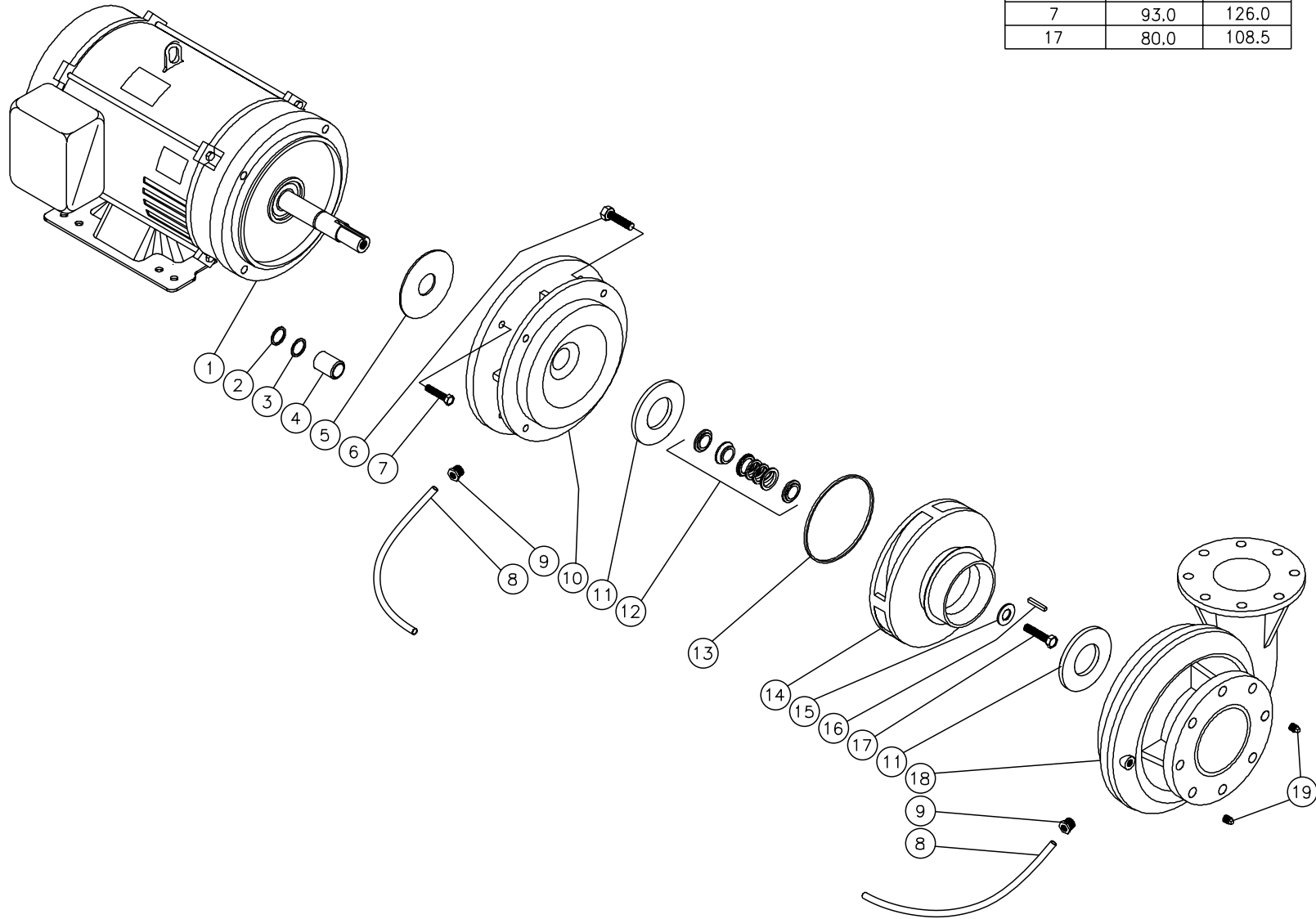


WC-300-0ME3-052099-DCE

MAIN ASSEMBLY											
REF. #	DESCRIPTION	PART#	QTY.	REF. #	DESCRIPTION	PART#	QTY.	REF. #	DESCRIPTION	PART#	QTY.
1	Frame Assembly	5-0142A01	1	33	Flange (See 24-0198)	N/A Sep.	1	65	Drain "T"	24-0222	1
2	Bolt	27-0218	4	34	Pipe	24-0217	1	66	Bushing	24-0191	1
3	Leveler Foot	20-0502A01	4	35	Coupling (Inc. 36-39)	24-0194	1	67	Nipple	24-0203	3
4	Washer	28-0023	16	36	Seal	26-0232	1	68	Condulet	32-0642	1
5	Lock Washer	29-0008	8	37	Coupling (See 24-0194)	N/A Sep.	1	69	Switch- Flow Adjustable	32-0641	1
6	Bolt	27-0118	12	38	Bolt	31-0072	4	70	Bushing	24-0235	1
7	Flange	24-0199	2	39	Nut	30-0006	4	71	Tee	24-0225	1
8	Nipple	24-0204	2	40	Drain "T"	24-0223	1	72	Decal- Number 3	34-0968	1
9	Tee	24-0226	1	41	Bushing	23-0056	2	73	Union	24-0231	1
10	Gasket	26-0230	1	42	Guage	22-0292	2	74	Decal- Clear Laminate	N/A	1
11	Nut	30-0159	4	43	Coupling (Inc. 38-39, 44-45)	24-0196	1	75	Decal- Serial Number	N/A	1
12	Plumbing Support Bracket	20-0505A01	2	44	Seal	26-0233	1	76	Decal- Data Plate	N/A	1
13	Edging *(Two Foot Required)	33-0020	1	45	Coupling (See 24-0196)	N/A Sep.	1	77	Decal- Mi-T-M Stripe w/Logo	34-0725	1
14	Bolt	27-0371	8	46	Pipe	24-0215	1	78	Decal- Mi-T-M Gold	62-0087	1
15	Nut	30-0180	8	47	Ball Valve	22-0290	2	79	Decal- Mi-T-M Stripe	34-0501	1
16	Nut	27-0015	3	48	Decal- Number 2	34-0967	2	80	Decal- American Flag	34-0521	1
17	Washer	28-0002	6	49	Clamp (Inc. 31-33)	42-0031	1	81	Decal- Warning/Caution/Operation	34-0970	1
18	Bolt	27-0015	3	50	Bolt	27-0017	1	82	Control Panel Assembly (See pg. 8)	N/A Sep.	1
19	Centrifugal Pump	3-2003	1	51	Clamps (See 42-0031)	N/A Sep.	2	83	Bolt	27-8898	5
20	Nut	30-0161	4	52	Nut	30-0155	1	84	Tank	12-0084	1
21	Washer	28-0005	8	53	Union	24-0228	2	85	Switch- Blue	32-0528	1
22	Bolt	27-0167	4	54	Nipple	24-0208	2	86	Switch- Red	32-0530	1
23	Pipe	24-0218	1	55	Solenoid Valve	55-0019	1	87	Switch- Stop	32-0608	1
24	Decal- Number 1	34-0966	2	56	Union	24-0227	1	88	Legend- Stop	32-0609	1
25	Coupling	24-0197	1	57	Nipple	24-0206	1	89	Electrical Cover	32-0605	1
26	Bushing	24-0193	1	58	Decal- Number 4	34-0969	1	90	Switch- Start	32-0606	1
27	Nipple	24-0201	1	59	Ball Valve	22-0279	1	91	Legend- Start	32-0607	1
28	Ball Valve	22-0288	1	60	Clamp (Inc. 61-63)	42-0033	2	92	Check Valve	55-2287	1
29	Bolt	27-0321	8	61	Bolt	27-0118	2	93	Filter Screen	19-2005	1
30	Nut	30-0175	8	62	Clamp (See 42-0033)	N/A Sep.	4	*Must Order in One Foot Lengths			
31	Flange (Inc. 32-33)	24-0198	1	63	Nut	30-0159	2				
32	Seal	26-0231	1	64	Filter	19-2003	1				

CENTRIFUGAL PUMP (3-2003)

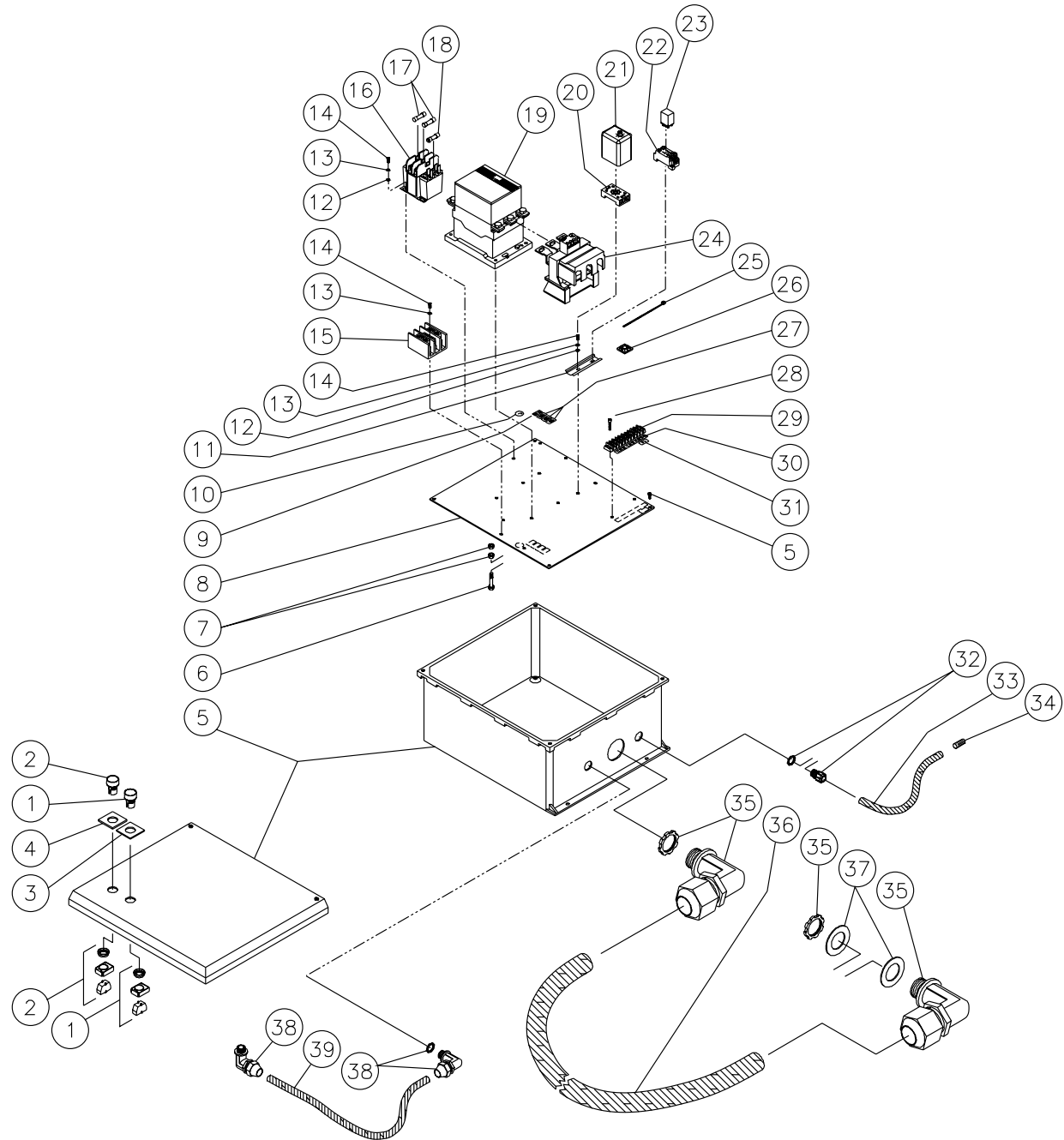
TORQUE SPECS.		
POSITION	FT/LB	N · m
6	45.0	61.0
7	93.0	126.0
17	80.0	108.5



CENTRIFUGAL PUMP (3-2003)

REF. #	DESCRIPTION	PART #	QTY.		REF. #	DESCRIPTION	PART #	QTY.
1	Motor- 40HP	2-0105	1		11	Wear Ring	46-0867	2
2	Square Ring Spacer Sleeve	25-0488	1		12	Mechanical Seal	46-0861	1
3	O-ring Sleeve	25-0489	1		13	Square Ring	25-0490	1
4	Sleeve	46-0866	1		14	Impeller	46-0856	1
5	Deflector	46-0868	1		15	Washer Impeller	28-1037	1
6	Bolt	27-8956	8		16	Square Key	43-0104	1
7	Bolt	27-8958	4		17	Stainless Steel Bolt	27-8457	1
8	Polypropylene Tube	15-0214	1		18	Case	46-0859	1
9	Adapter	23-0383	1		19	Plug	24-0009	2
10	Bracket	46-0864	1			Kit- Pump End (Includes 2-19)	70-0286	

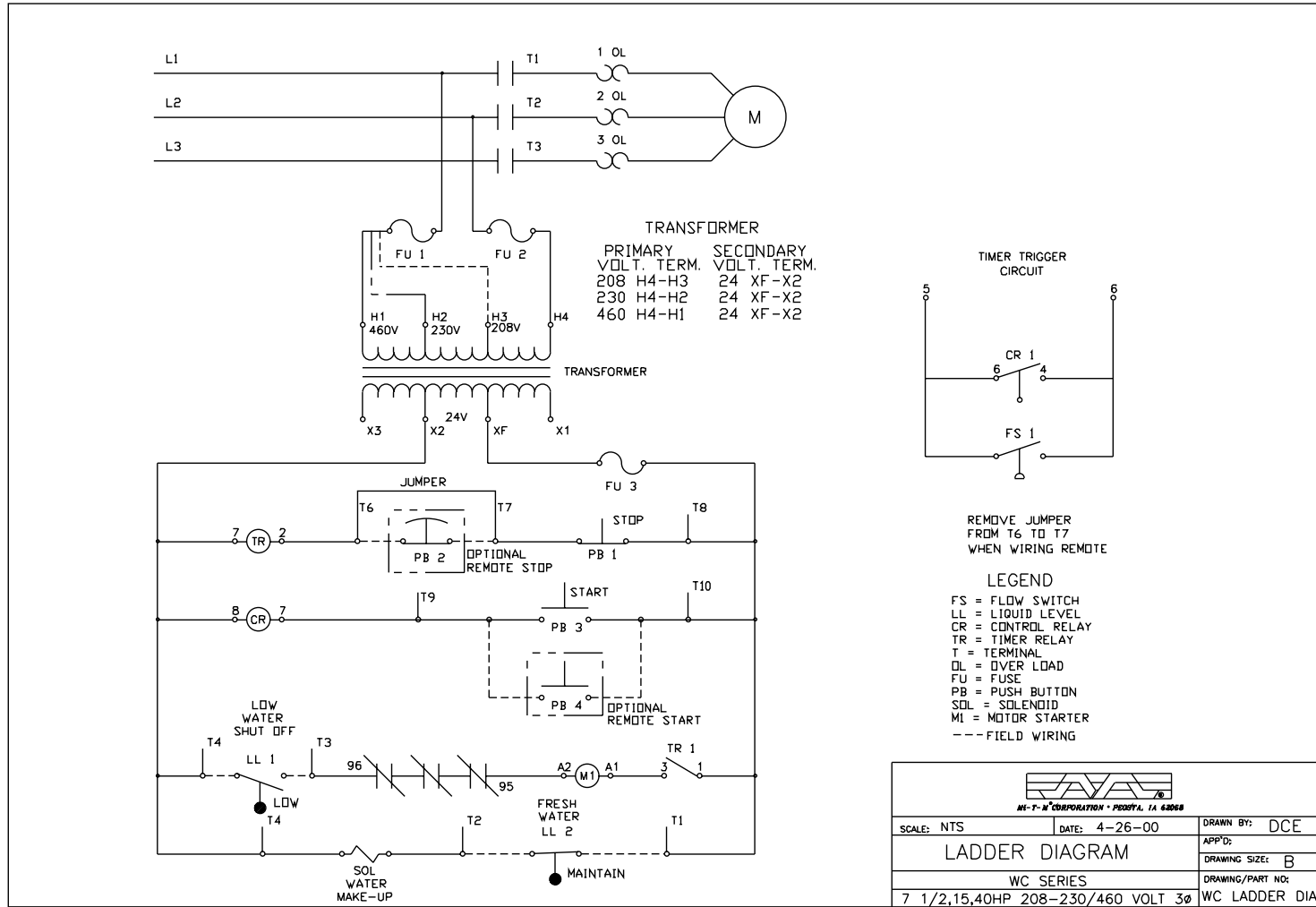
CONTROL PANEL (208V/230V)



WC-180AMP-ISO-052099-DCE

CONTROL PANEL (208V/230V)							
REF. #	DESCRIPTION	PART#	QTY.	REF. #	DESCRIPTION	PART#	QTY.
1	Switch- Start	32-0534	1	22	Base Socket	32-0321	1
2	Switch- Stop	32-0610	1	23	Relay	32-0320	1
3	Legend- Start	32-0612	1	24	Over Load Relay	32-0599	1
4	Legend- Stop	32-0611	1	25	Cable	32-0021	15
5	Control Box	32-054301	1	26	Mounting Base	32-0621	6
6	Bolt	27-8898	1	27	Decal- 208 Volt	34-0896	1
7	Nut	30-3022	2	-	Decal- 230 Volt	34-0895	1
8	Control Panel	20-0508A14	1	28	Bolt	27-8930	2
9	Decal- 3 Phase	34-0965	1	29	Terminal Block	32-0614	1
10	Decal- Ground	34-0889	1	30	Decal- Terminal Strip 1-10	34-0958	1
11	Din Rail *(One Foot Required)	32-0316	1	31	Decal- 24 Volt	34-0894	1
12	Washer	28-0010	7	32	Conduit- Straight	32-0255	1
13	Washer	28-1009	11	33	Conduit- Flexible *(Three Feet Required)	33-0253	1
14	Bolt	27-8835	9	34	Heat Shrink	32-0219	1
15	Power Distribution Block	32-0613	1	35	Conduit Elbow	32-0594	2
16	Transformer	32-0618	1	36	Conduit- Flexible	32-0595	1
17	Fuse- 600 Volt	32-0469	2	37	Wahser	32-0604	2
18	Fuse- 125 Volt	32-0619	1	38	Conduit- Flexible *(Four Feet Required)	32-0253	1
19	Contactoer	32-0596	1	39	Conduit Elbow	32-0254	2
20	Base Socket	32-0315	1	*Must Order in One Foot Lengths			
21	Timer	32-0314	1				

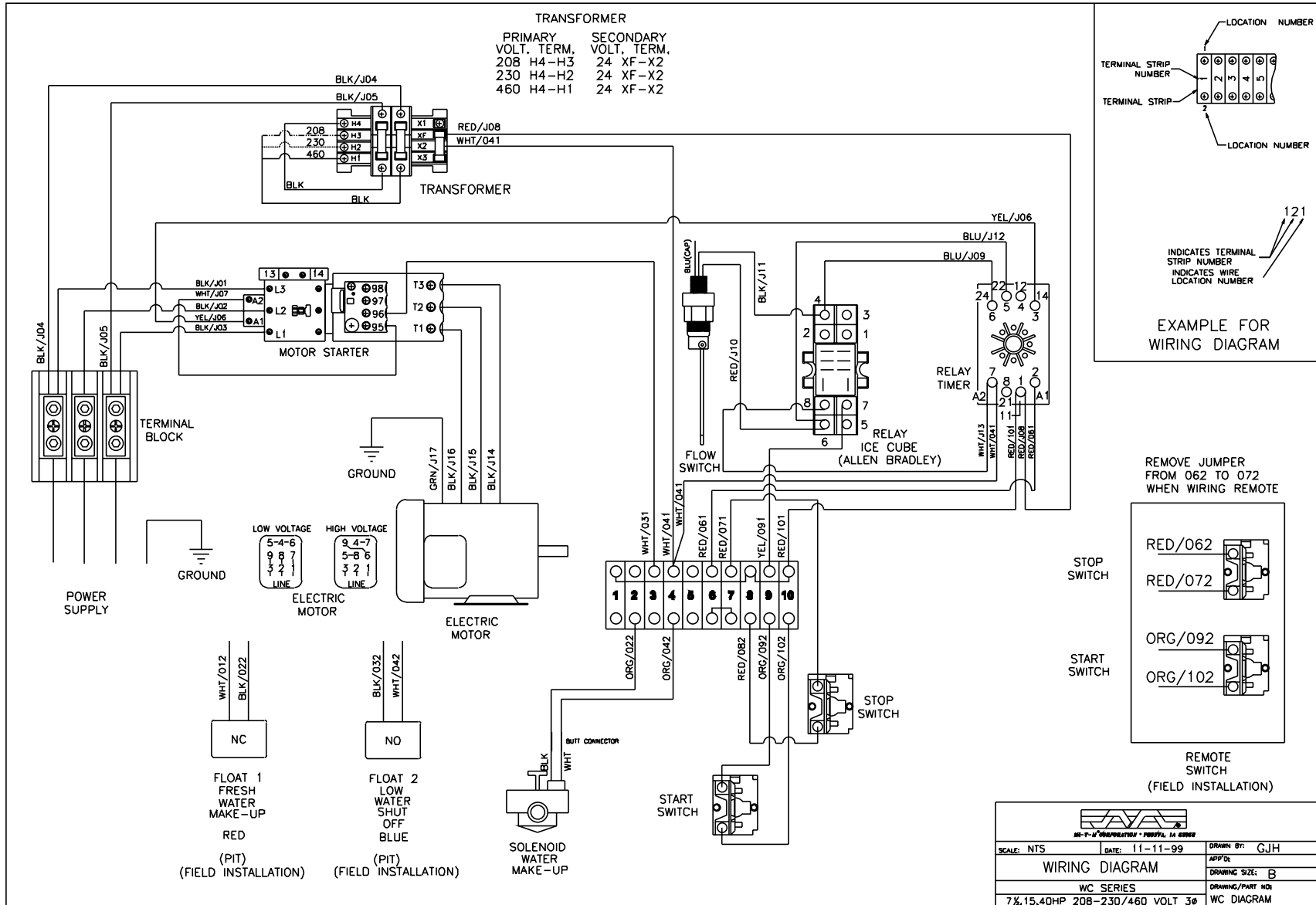
ELECTRICAL SCHEMATIC (208V/230V)



<small>MI-T-M CORPORATION • PROSPERA, IA 52068</small>	
SCALE: NTS	DATE: 4-26-00
LADDER DIAGRAM	
WC SERIES	
7 1/2, 15, 40HP 208-230/460 VOLT 3Ø	DRAWN BY: DCE
	APP'D:
	DRAWING SIZE: B
	DRAWING/PART NO:
	WC LADDER DIA

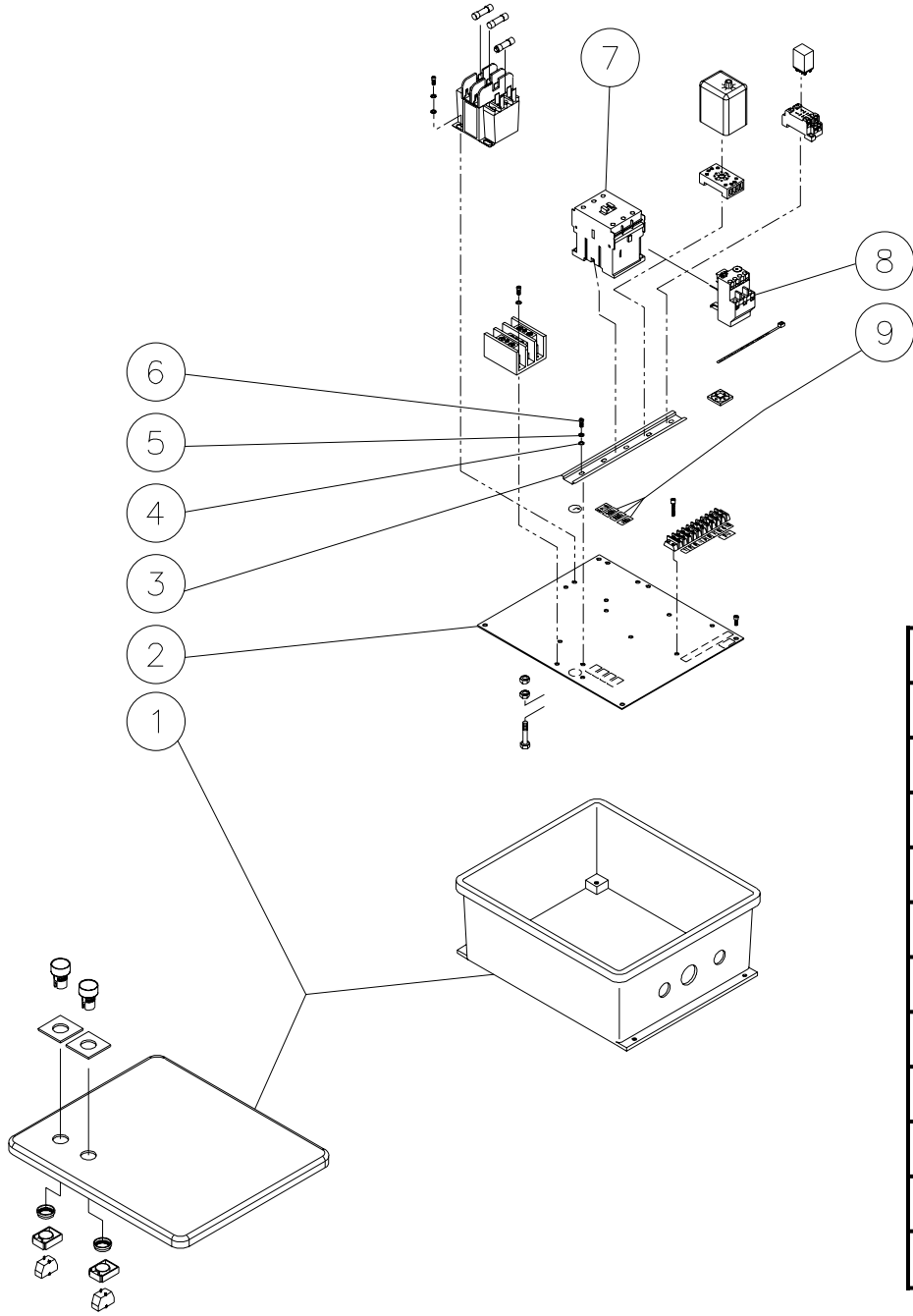
WC-SCHEMATIC-A-042600-JJ

ELECTRICAL DIAGRAM (208V/230V)



WC DIAGRAM-A-042600-JJ

WX-0004 VOLTAGE OPTION (460V)

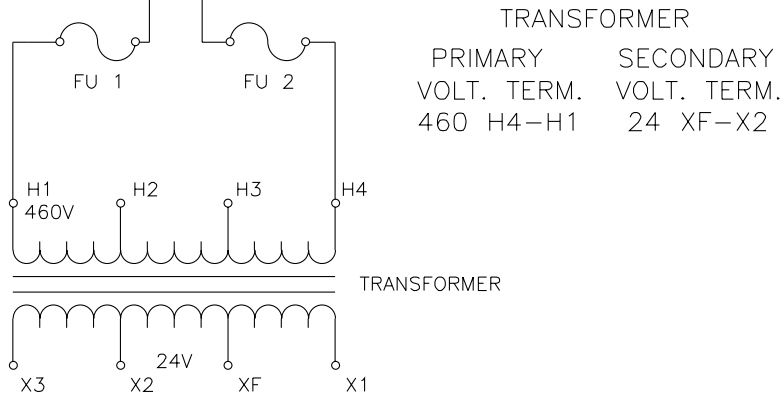
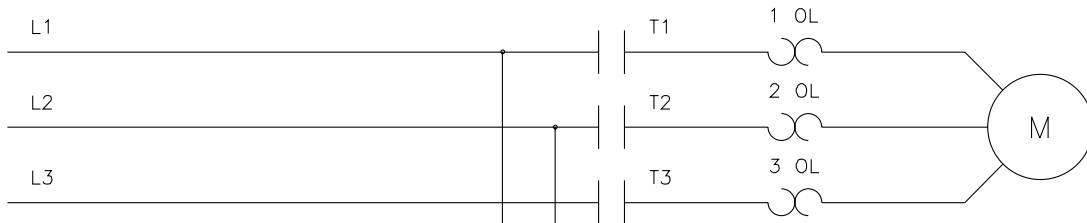


WX-0004-051999-DCE

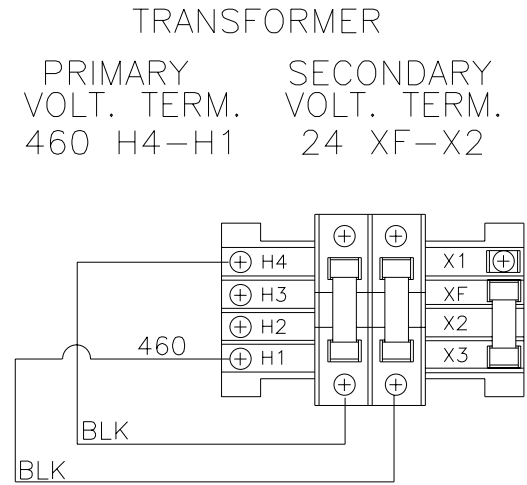
WX-0004 VOLTAGE OPTION (460V)			
REF. #	DESCRIPTION	PART#	QTY.
1	Control Box	32-046201	1
2	Control Panel	20-0507A14	1
3	Din Rail *(One Foot Required)	32-0316	1
4	Washer	28-0010	7
5	Washer	28-1009	11
6	Bolt	27-8835	9
7	Contactor	32-0598	1
8	Over Load Relay	32-0490	1
9	Decal- 460 Volt	34-0898	1
*Must Order in One Foot Lengths			

WX-0004-051999-DCE

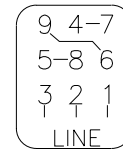
WX-0004 ELECTRICAL SCHEMATIC (460V)



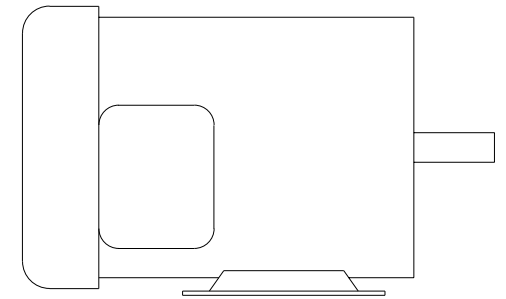
WX-0004 ELECTRICAL DIAGRAM (460V)



HIGH VOLTAGE

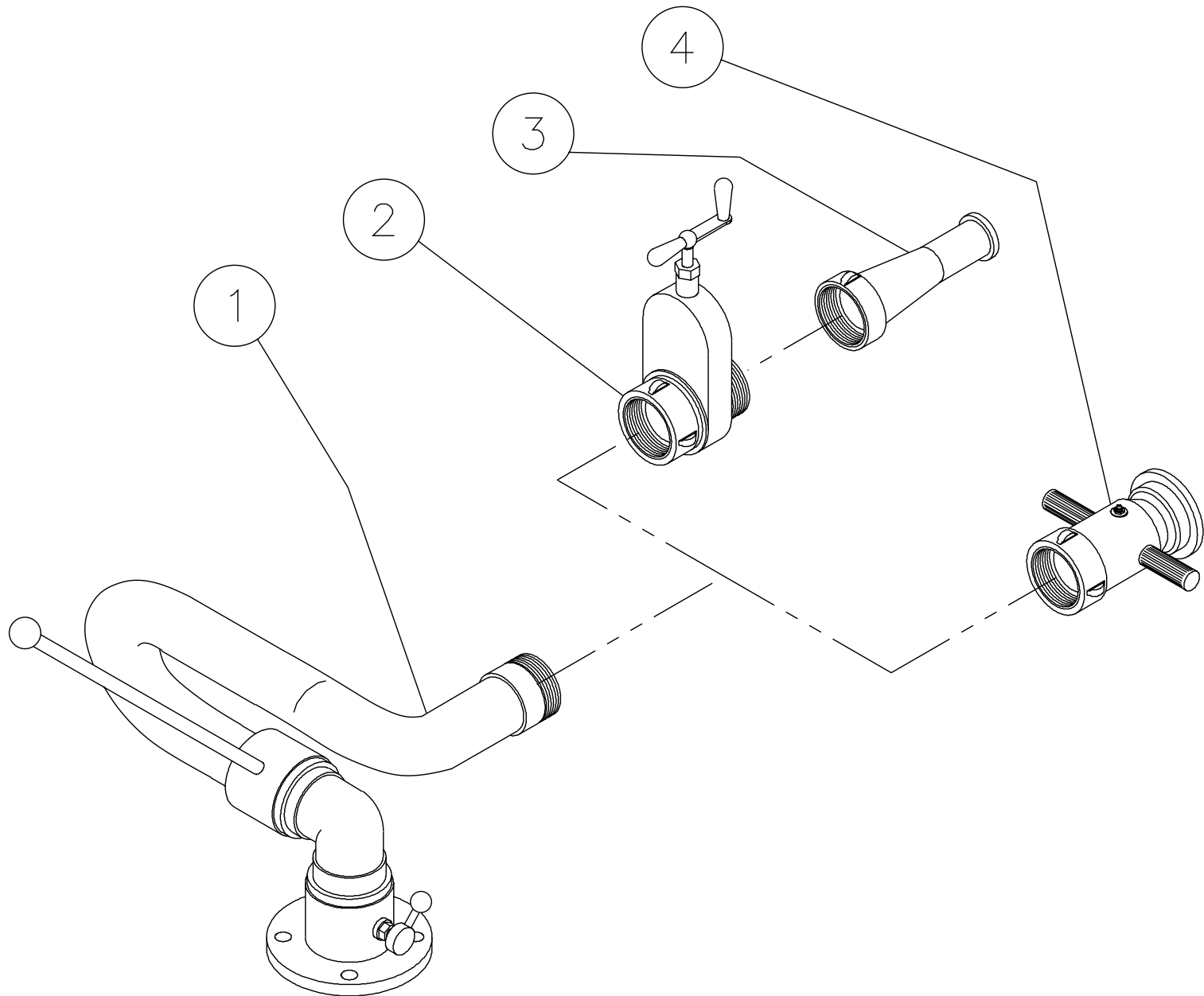


ELECTRIC MOTOR



ELECTRIC MOTOR

WC-300-0ME3 ACCESSORIES



WC-300 ACCESSORIES-020999-DCE

WC-300 ACCESSORIES-020999-DCE

WC-300-0ME3 ACCESSORIES			
REF. #	DESCRIPTION	PART#	QTY.
1	Monitor	18-2006	1
2	Nozzle- Shut Off	18-2005	1
3	Nozzle- Smooth Bore	18-2004	1
4	Nozzle- 100PSI Twist Shut Off	18-2003	1

