



Professional 20 Inch Rotary Surface Cleaner AW-7020-8002



SPECIFICATIONS

Model	AW-7020-8002
Operating Pressure	1,000 to 4,000 PSI
Maximum Flow	8.0 GPM
Maximum Temp.	200°F
Nozzles (2 per unit)	2502
Housing Material	ABS
Weight	21 lbs
Dimensions	70" x 21" x 21"

HAZARD	POTENTIAL CONSEQUENCE	PREVENTION
RISK OF BODILY INJURY	Serious injury or death could occur.	<p>ALWAYS read, understand, and follow operation instructions.</p> <p>ALWAYS wear protective eye wear.</p> <p>ALWAYS keep clear of rotating nozzles.</p> <p>NEVER lock trigger gun open with any device.</p>
RISK OF EQUIPMENT DAMAGE	Risk of major repair.	<p>Drain water in cold weather to avoid freezing.</p> <p>Use only genuine Mi-T-M replacement parts for necessary repairs.</p> <p>Tampering with any part of this machine will void all warranties.</p>

OPERATION:

Read, understand, and follow ALL safety guidelines and operation instructions prior to use.

1. Connect to pressure washer.
2. Turn water on and open valve. Open trigger gun for flow of water through nozzles. Nozzles must have flowing spray. If not, remove tips and clean; reassemble, making sure that groove of nozzle is parallel to spray bar. Use pipe dope when installing nozzles.
3. Start pressure washer. The Rotary Surface Cleaner is ready for operation.
4. Walk slowly behind the Rotary Surface Cleaner cleaning as you go. If striping occurs, slow down your pace.
5. Check "weep holes" on bottom of swivel periodically. Water will seep slowly; if water shoots out, stop and replace seals. Swivel assembly can be rebuilt.
6. For maximum effectiveness keep spray tips clean. If the machine vibrates, stop and clean spray tips.

DO NOT ALLOW MACHINE TO REMAIN STATIONARY ON SOFT SURFACES, SUCH AS WOOD.

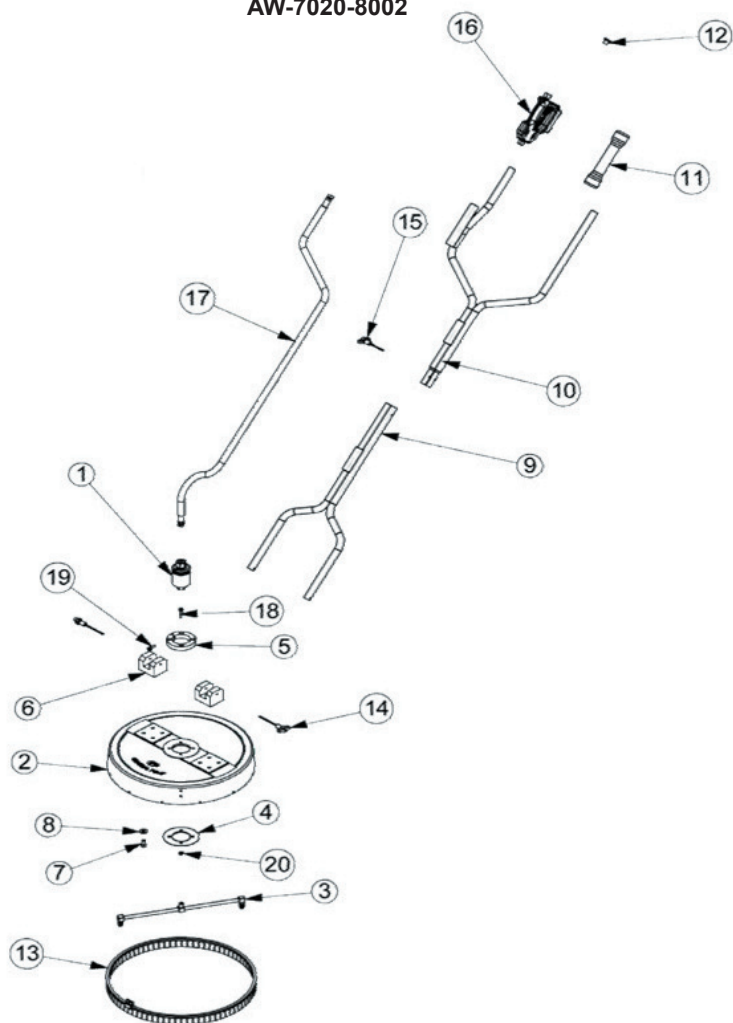
CAUTION: Striking any raised obstacle during operation will damage machine. If contact does occur and results in vibration when operating machine, STOP and replace spray bar. Continued operation could result in serious injury or damage to machine.

!SAVE THESE INSTRUCTIONS!

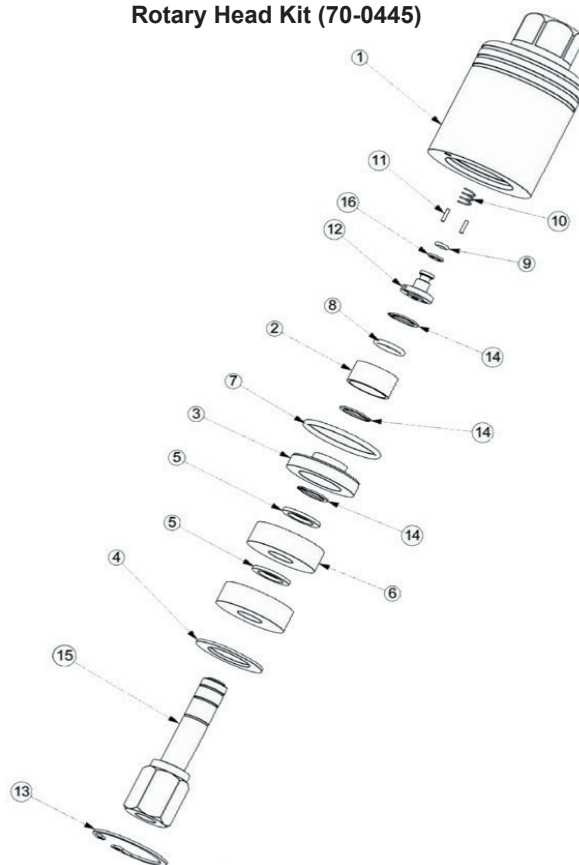
Form #37-0931-010406

PARTS LIST:

AW-7020-8002



Rotary Head Kit (70-0445)



AW-7020-8002

Ref. #	Description	Part #	Qty.
1	Swivel	N/A	1
2	Deck	*CF	1
3	Spray Bar Assembly	33-0438	1
4	Retaining Plate	*CF	1
5	Split Collar	*CF	1
6	Handle Block	*CF	2
7	Bolt	*CF	8
8	Washer	*CF	8
9	Lower Handle	*CF	1
10	Upper Handle	*CF	1
11	Handle Grip	*CF	1
12	Handle Plug	62-0192	1
13	Brush Assembly	33-0439	1
14	Lock, Pin - 75mm	43-0121	2
15	Lock, Pin - 50mm	43-0122	1
16	Trigger Gun	16-0438	1
17	Hose	*CF	1
18	Bolt	*CF	4
19	Bolt	*CF	1
20	Nut	*CF	4

*Consult Factory

Rotary Head Kit (70-0445)

Ref. #	Description	Part #	Qty.
1	Housing Swivel (See 70-0445)	N/A Sep.	1
2	Bearing Retainer - Small (See 70-0443)	N/A Sep.	1
3	Bearing Retainer (See 70-0443)	N/A Sep.	1
4	Bearing Retainer Washer (See 70-0443)	N/A Sep.	1
5	Bearing Spacer (See 70-0443)	N/A Sep.	2
6	Bearing (See 70-0443)	N/A Sep.	2
7	O-ring (See 70-0443)	N/A Sep.	1
8	O-ring (See 70-0443)	N/A Sep.	1
9	O-ring (See 70-0443 & 70-0444)	N/A Sep.	1
10	Compression Spring (See 70-0443 & 70-0444)	N/A Sep.	1
11	Pin (See 70-0443)	N/A Sep.	2
12	Stem - Small (See 70-0443 & 70-0444)	N/A Sep.	1
13	Snap Ring (See 70-0443)	N/A Sep.	1
14	Snap Ring (See 70-0443)	N/A Sep.	3
15	Swivel Stem (See 70-0443)	N/A Sep.	1
16	Back-up Ring (See 70-0443 & 70-0444)	N/A Sep.	1
	Rotary Head Kit - Major (Inc. 2-16)	70-0443	1
	Rotary Head Kit - Minor (Inc. 9, 10, 12, 16)	70-0444	1
	Rotary Head Kit - Complete (Inc. 1-16)	70-0445	1